

Contact Us

If you're researching a specific topic and would like some help, give us a call. Our friendly and experienced team of librarians will be able to point you in the right direction or even find the answer for you. Available from 8am until 9pm Monday to Friday and 9am until 4pm Saturday and Sunday. You can also send us an email or fax.

TELEPHONE (03) 941 7923

WEBSITE <http://library.christchurch.org.nz>

EMAIL library@ccc.govt.nz

ADDRESS PO Box 1466, CHRISTCHURCH

FAX (03) 941 7848

VISIT

Bishopdale

Central

Fendalton

Halswell

Hornby

Linwood

New Brighton

Papanui

Redwood

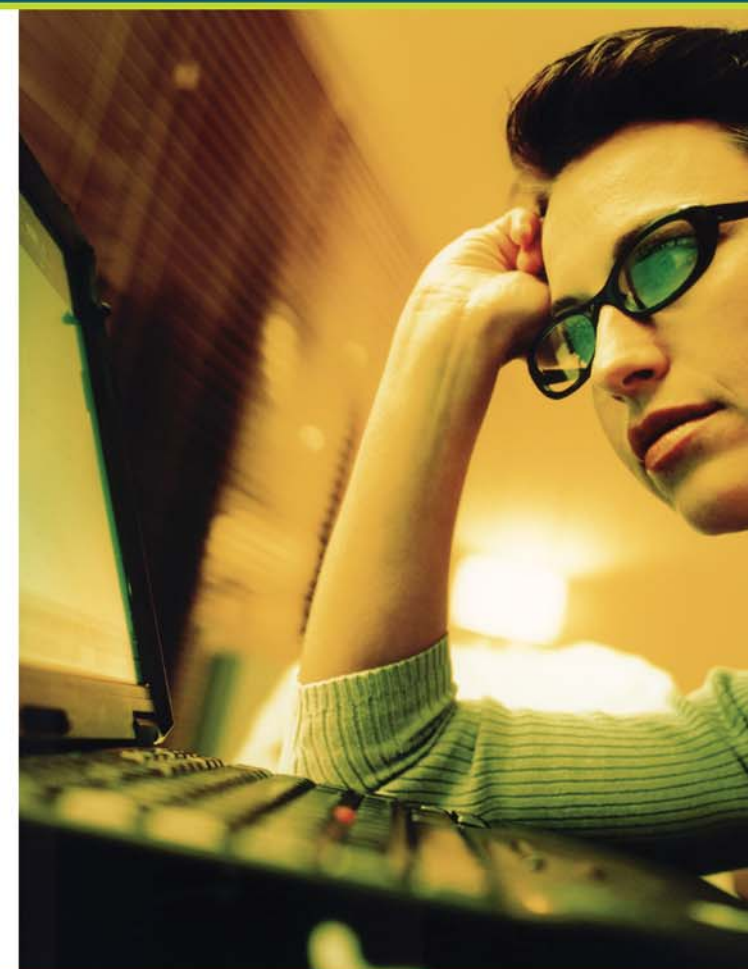
Shirley

South Christchurch

Spreydon

Sumner

Mobile



 Christchurch City Libraries
Ngā Kete Wānanga-o-Ōtautahi

HOMEWORK, STUDENTS & RESEARCHERS

Whether you're a university student, a school student or are researching a specific topic, Christchurch City Libraries have many resources you need, not to mention a team of experienced information specialists ready to help.

NGĀ POUNAMU MĀORI CENTRE

Tēnā koutou katoa

Found on the second floor of the Central Library, Ngā Pounamu Māori Centre is a community space with a special emphasis on Te Ao Māori. With everything from magazines to newspapers and videos, you'll find resources on subjects important to Tangata Whenua. The majority of this material is available for loan, however there are some items that can only be used in the centre.

Special Collections include the Ngāi Tahu Collection / Ngā Rākau Teitei e Iwa - a collection of material relating to the Ngāi Tahu claim as well as general books about Ngāi Tahu and books written by Ngāi Tahu authors. The Chatham Island / Wharekauri - Rekohu collection also resides here. The South Island, Titi Island and Chatham Island Minute Books are also essential resources in the Centre.

You'll also find a television / video player tuned into the Maori TV station, an excellent range of language resources in different formats and two public internet terminals dedicated to accessing Maori electronic resources such as Ara Ipurangi mo te iwi Māori and Tī Kōuka Whenua, a local Māori history website.

The customer service desk is open from 10am - 5pm. Outside these hours, please ask the team in the Aotearoa New Zealand Centre next door. So whether you're looking for information on hāhi (religion), moko (tattoo), whakapapa (genealogy), iwi/hapū studies (tribal histories), or Treaty of Waitangi information, our specialist team will make your research much easier.

AOTEAROA NEW ZEALAND CENTRE HARENGA KI AOTEAROA

Nau mau, haere mai - Welcome

With everything from books, pamphlets and legislation to maps, photographs and genealogical material, the Aotearoa New Zealand Centre is the best place to find New Zealand material - both contemporary and historical. Whether you're looking for a newspaper article from 1860 or a Waitangi Tribunal report, you'll find it here. In particular, you'll find resources on Otautahi / Christchurch and the Canterbury region. No material can be borrowed from this collection.

Located on the second floor of the Central Library, it's an information and heritage resource designed with you in mind. And best of all, our experienced team are on hand to guide you through our many resources. Surprise yourself. Find out more about your place today.

HOMEWORK ZONES

Every library has a Homework Zone for children. It's a space dedicated to Homework. Here, you'll find all the information you need to help you with your homework. You may also join the Homework Zone Club. It's free to join and you can get great rewards.

BOOK A LIBRARIAN

If you need help using the library catalogue, accessing our online resources or would like some research hints, simply book a librarian for an individual 30 minute free session. It's a great way to kick start your research project. Give us a call on 941 7923 or email library@ccc.govt.nz to arrange a date and time.

RESEARCH

If you would like a librarian to search for information on your behalf, we are happy to assist. We will spend up to half an hour searching for the information FREE of charge*. After that, library research services are charged at \$40.00 per hour, with the smallest chargeable rate being half an hour. Printing costs, reserves or interloans charges will be additional.

*There is a charge for all research services in the Aotearoa New Zealand Centre.

We also offer a specialist music research service called Music Quest. Call 941 7923 or check our website for more details.

For specialised business research, try Business Advantage - a commercial information service tailored to your needs. For more information or an obligation-free estimate, contact Business Advantage on 941 7869 or email business.advantage@ccc.govt.nz

PREMIUM DATABASES

You don't need to come into the library to find information. Access exactly what you are looking for with our Premium Databases. Get information for a school project, check out the Oxford dictionary or look for resources on a specialist topic. With on-line magazines, newspapers, encyclopedias as well as business, science, music, art, biography and literature databases, it's an easy way to find up-to-date, relevant information.

New databases are often added. For a comprehensive list of the databases, visit our website <http://library.christchurch.org.nz>

Some databases can only be accessed at your local library but most can be accessed through the libraries website - so you can get the information you need at home, at work or anywhere. You'll need a library card and PIN to access these databases outside the library.

LIVEONLINE

LiveOnline is an interactive session with a librarian live over the internet - available 24 hours a day, 7 days a week. Get help using our databases or the internet and much more. All you need to do is click on the LiveOnline link on the library website and follow the instructions. It's as easy as that.

localeye

With everything from schools and sports clubs to visitor information and film festivals, localeye is your online guide to Christchurch and Canterbury. Easy to use and regularly updated, it's the best way to find out about the region. Check it out today - www.localeye.info

CINCH

For community information, try CINCH - a comprehensive database of community information for greater Christchurch. You'll find a diverse range of groups like automobile clubs, church clubs, evening classes, halls for hire, medical support groups and ethnic groups to name a few. From here you can contact an organisation, find out where they meet, what they do or a website address. You can also request mailing labels, a Word table or an Excel spreadsheet of the information you need.

For more information visit:
<http://library.christchurch.org.nz/CINCH>