

## Upper Riccarton Community & School Library Building Project Update

# New Library to Open in January 2006

Welcome to the first building progress report from the Christchurch City Libraries' newest edition to the network, the Upper Riccarton Community and School Library.

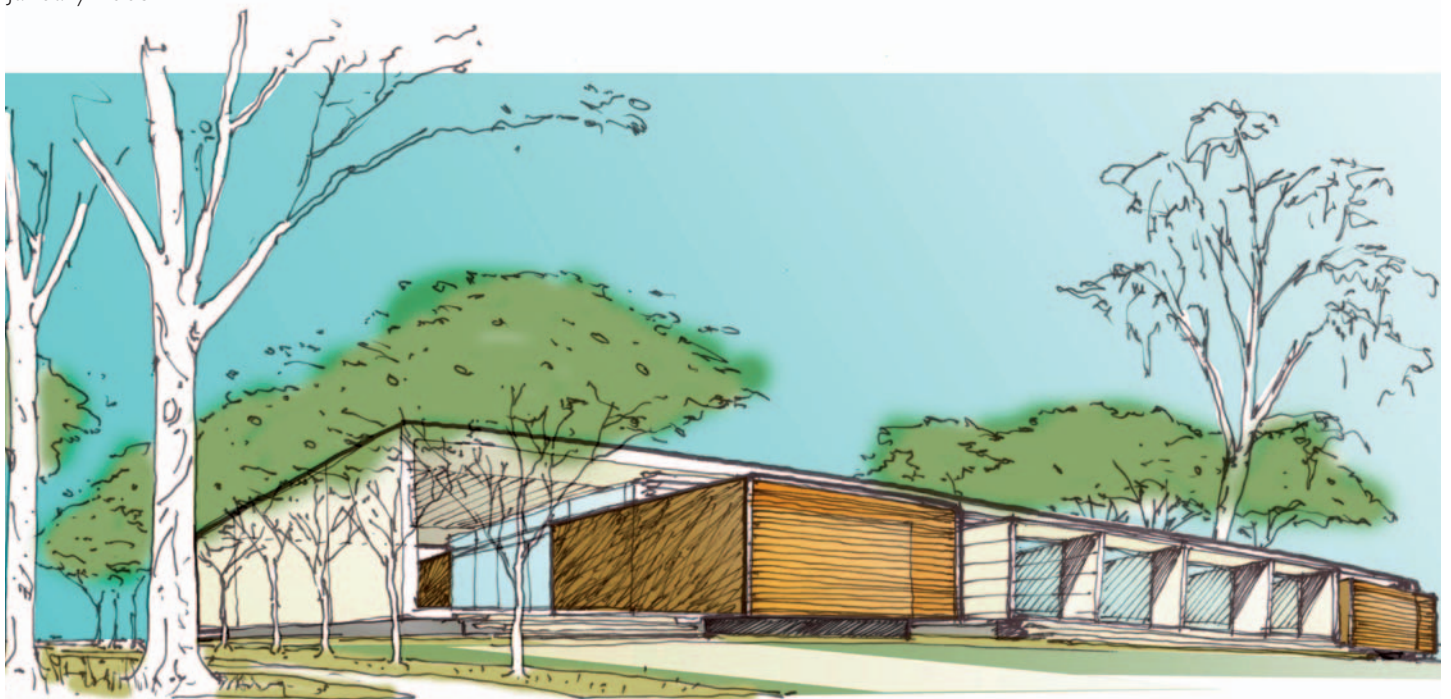
Construction began on the project in January this year. It is a joint venture between the Christchurch City Council, Riccarton High School and the Ministry of Education. Apart from the usual library fare, this community and school library will have a café, a learning centre and teaching/community meeting rooms.

Planning for the project started in September 2002 with a series of public meetings in late 2003. After public meetings and input from the community and stakeholder groups, the final design (by Warren and Mahony) for the library was officially signed off in late 2004. The first spade hit the turf in January 2005.

*"The new Library at Upper Riccarton will be an important community focal point for a population of more than 30,000 residents says Joan Simpson, Community Librarian at Upper Riccarton. "Customers will be able to read, meet friends over coffee, borrow music and movies. Families can use the library to share learning and recreation experiences"*

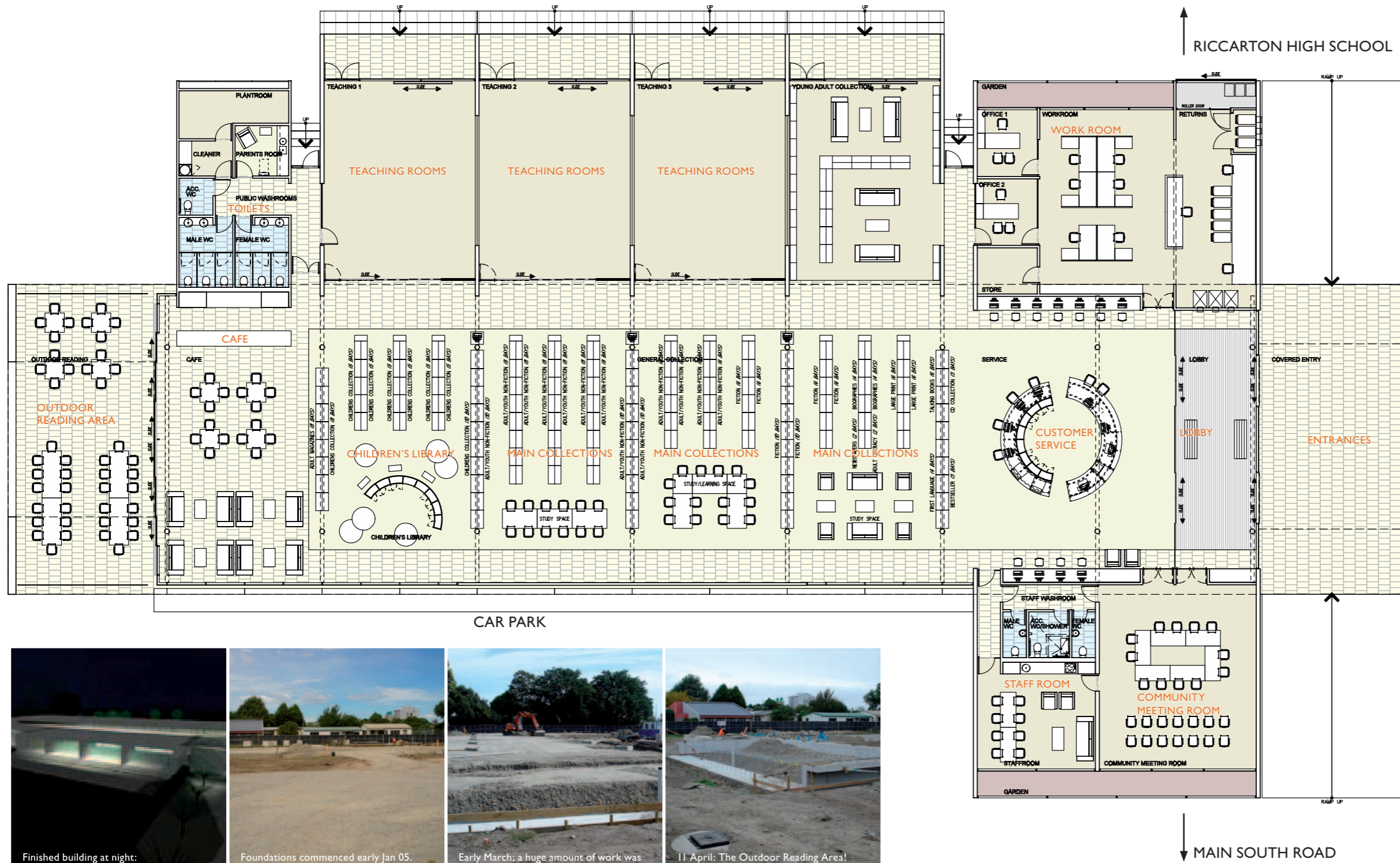
At over 1600 square metres, the Library is one of the biggest in the network and will house over 50,000 brand new books and audio visual items when it opens in early 2006.

This is an exciting new building and we look forward to bringing you a regular update of its construction progress and to share some insights into the features of the new library service at Upper Riccarton.



An artist's impression of the Upper Riccarton Community and School Library. Why not pop down to 73 Main South Road and take a look at the building progress - please view the building from the side walk only.

Also check out <http://library.christchurch.org.nz/UpperRiccarton/> for more information on the project.



**In the November Building Update:**

Hear from Riccarton High School Principal Gary Coburn...

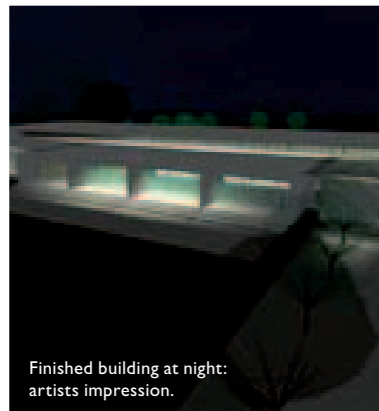
The inspired vision of architects from Warren and Mahoney...

Find out more about Red Café as we count down to the opening in January 2006.

The amazing 21st century technology in the Library...

More building progress photos...

More about the vision of the library...



Finished building at night: artists impression.



Foundations commenced early Jan 05.



Early March; a huge amount of work was done to lay the foundation for the building.



11 April: The Outdoor Reading Area!



20 May, the walls start.



16 June: The roof work.



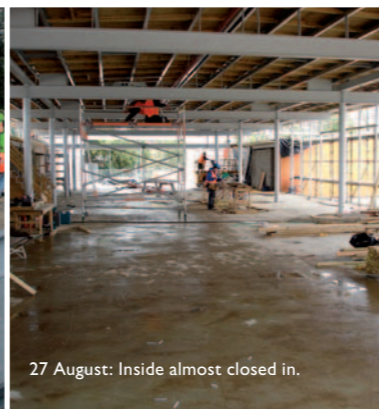
Late July: Inside looking up.



27 July: Out the back, in front of the teaching rooms.



9 August: Rear Car Park from the roof.



27 August: Inside almost closed in.



27 August: Main Entrance.



Late August: School Entrance.

## Riccarton High School Library Manager

Paula Eskett is the Riccarton High School Library Manager and has been in the job for 12 months. Prior to working at the high school, Paula was a reference librarian at Christchurch City Libraries, so she is no stranger to the organisation that will be moving in with the high school library when the new facility is finished in January 2006!

“During the last year I've immersed myself in the school life, culture and ways of doing things. It's a fantastic school environment to be both educated in and work in. The unique Riccarton Way philosophy has an impact on all aspects of school life. I'm really excited to be given the opportunity to lead our school library into this new joint-use venture and to be working alongside Christchurch City Libraries again is fantastic “

Riccarton High School is a busy, vibrant, co-educational secondary school with nearly 1,000 students from over 30 different countries. In the next issue of the building update, we will hear more about Riccarton High School and from the Principal, Gary Coburn.



---

## Meet the Upper Riccarton Community Librarian

Joan Simpson has been appointed as the Community Librarian to lead the team at the new Upper Riccarton Community Library.

During some of her time at Christchurch City Libraries, Joan has been Community Librarian at Papanui Library and is leaving the position of Community Librarian at Shirley Library to head up a new team at Upper Riccarton.

Working at the Shirley Library has given Joan the experience of managing a team similar in size to the new Upper Riccarton Library and it is also one which operates over seven days. *“Managing a library which also has a café as well as having the teaching classrooms and a learning centre will be a new experience for me but I can't wait to get started”* said Joan.

The joint use of the library by the Riccarton High School is a very exciting initiative which Joan is looking forward to. The Christchurch City Libraries' staff will be working in conjunction with the teaching and library staff from the

Riccarton High School to make this new library a vibrant and exciting place to be. Joan will be working alongside the Community Development Advisors and Community Recreation Advisors to meet up with the residents and community groups in the area to hear what their expectations of this new facility will be.



---

## Key Dates and Information

**Projected construction completed:** December 2005  
**Open to the Public:** Early 2006

**Proposed Opening Hours** (*still to be confirmed*): Mon – Fri 9am – 8pm  
Sat and Sun 10am -4pm