

1. He kawenga tōu mō ngā mea kua mino i raro i te mana o tō kāri. Kua e tuku i tō kāri ki tangata kē.
2. E 28 rā te roa o te wā mino mō te nuinga o ngā pukapuka, ngā moheni, ngā kōpae me ngā rīpene. Tēnā tonohia ngā kōrero e pā ana ki te roa o te wā mino mō ētahi atu mea.
3. He pai te mau mō te wā roa ake i te wā mino. He utu mō ia rā. E taea ana e te whare pukapuka te tono kia whakahokia mai ētahi o ngā mea, mēnā kua tonoa e tētahi atu kiritaki kia mino.
4. E kore e taea e koe te mino mea mēnā kua nui ake i te \$20 tō nama ki te whare pukapuka, mēnā kua roa ake rānei i te kotahi marama tō noho nama ki te whare pukapuka.
5. Mēnā ka ngaro i a koe tō kāri, ka tāhaetia rānei, tēnā kia wawe tō whakamōhio mai ki a mātou. Ki te mino mea tētahi i mua i tō whakamōhio tangata mai, he kawenga tonu tērā māu.
6. Tēnā whakamōhio mai koa mēnā ka neke whare koe. Me mōhio mai koe – hei te wā o te whakamana i tō noho hei mema me mau mai i tētahi tohu whai mana o tō tuakiri ake, (hei tauira - tō reihana taraiwa waka) me tētahi pepa hei tohu o tō wāhi noho o nā noa nei (me kore e tawhito ake i te 30 rā).

He Kōrero Mō Te Mātāpono Tuatoru O Te Ture Matatapu 1993

1. Ko ngā kōrero katoa e pā ana ki a koe e kohia ana e Ngā Kete Wānanga o Ōtautahi (he wāhanga o te Kaunihera o te Taone o Ōtautahi). Ehara i te mea he tono ā-ture tēnei, engari ki te hiahia koe ki te noho hei mema o Ngā Kete Wānanga o Ōtautahi me te mino mea, me tuku mai i ngā kōrero nei.
 2. Ka noho ngā kōrero nei ki Ngā Kete Wānanga o Ōtautahi, Poutaka Poutāpeta 1466, Ōtautahi.
 3. E taea ana e koe te kite i ngā kōrero mōu ake kei Ngā Kete Wānanga o Ōtautahi me te tono kia whakarerekē i ētahi o ngā kōrero ki te hiahia koe.
 4. E kore mātou e tuku kōrero atu e pā ana ki a koe i tua atu i ngā kōrero e tika ana kia whai i te utu mō ngā mea kua mino, i ngā kōrero ka tonoa rānei, i raro i te mana o ngā ture o te whenua .
- Ko tāku – he tika katoa ngā kōrero nei.
 - Ka whakaae au ki ngā ture, kua whārikihia e ngā Ture o te Noho Hei Mema.
 - Ka whakaae au, kia āhei Ngā Kete Wānanga o Ōtautahi ki te tuku i ngā kōrero e tika ana i runga i tēnei pepa ki te Wāhanga Ratonga Tahua mō te whai utu te take.
 - He kawenga tonu ki runga i au mō ngā momo pukapuka ka mino.

Waitohu: _____

Waitohu O Ngā Mātua/o Te Kaitiaki Whaimana Rānei: _____

(Mēnā kāore anō kia 16 tau te pakeke o te kaitono)

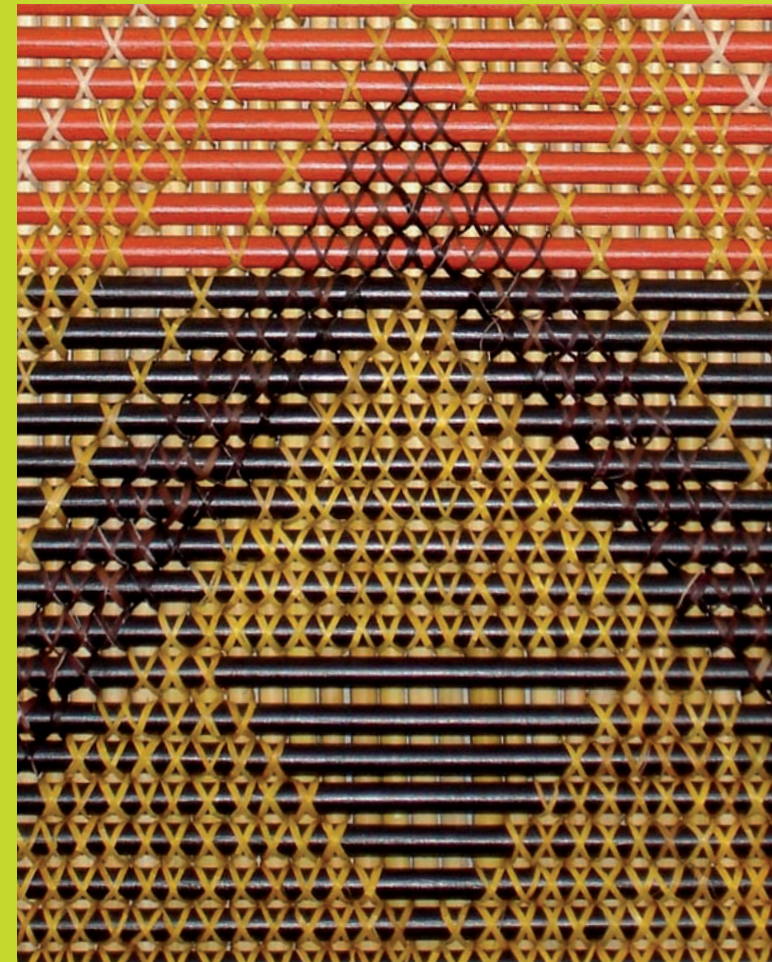
Mō Te Tari

Te tohu mana:

Momo (AC/AN) te mea:

Kaiwhakauru: Te Rā: / /

Waea. (03) 941 7923
Waea whakaahua. (03) 941 7848
īmera. library@ccc.govt.nz
Ipurangi. <http://library.christchurch.org.nz>
Wāhi. PO Box 1466, Christchurch



 **Christchurch City Libraries**
Ngā Kete Wānanga-o-Ōtautahi



CHRISTCHURCH
CITY COUNCIL · YOUR PEOPLE · YOUR CITY

‘think’ LIBRARY

<http://library.christchurch.org.nz> - Phone 03 941 7923

He Mema Motuhake

Mēnā kei konei koe e noho ana, he kaiutu rēti rānei koe o Ōtautahi, ā, kua pāngia koe e tētahi hauātanga, tērā pea e taea ana e koe te noho hei mema motuhake.

Mā Te Noho Hai Mema Motuhake E Taea Ana E Koe:

- Te mino pukapuka, moheni, puka kōrerorero, rīpene whakaata, rīpene, me ngā kōpae hoki mō te kore utu.
- Te mino i ngā mea mō te ono wiki.
- Te tono puka mō te kore utu
- Te whakahoki tōmuri i ō pukapuka me te kore whai utu.

He utu tonu mō te mino i ngā Kōpae Rorohiko mā ngā pakeke me ngā pukapuka hokona nuitia. He tikanga pea kia whakaatu atu i tētahi tiwhikete nā tō rata, he reta, he tohu rānei hei whakatūturu i tō māuiui.

He Mema Nō Waho

Mehemea kei wāhi kē tō kāinga, ā, he manuhiri rānei koe ki Ōtautahi nei e taea tonutia e koe, ngā ratonga o Ngā Kete Wānanga o Ōtautahi te whakamahī – mā te noho hei mema nō waho.

Kāore he utu mō te noho hei mema nō waho engari he utu anō mō te mino. E rua ō whiringa.

Te Utu Mā Ia Mea Mino

- Mō ngā mema nō waho (kua pakeke ake i te 19 tau) **\$2 tā ia mea** i te nuinga o te wā, kāore he utu mō ngā taiohi nō wāhi kē (arā kāore anō kia 19 tau). *Me pātai atu ki ngā kaimahi o te whare pukapuka.

Te Utu Koha Mō Te Tau Kia Rite Ō Mana Mino Ki Ērā O Ngā Mema Tukipū

Ko te utu mō te tau **\$100**

Ko te utu mō ngā marama e ono **\$50**

He utu ēnei e tāpiri atu ana ki ērā atu utu mō te mino i ngā kōpae mā ngā pakeke, ngā rīpene, ngā kōpae rorohiko, te tono pukapuka mai i ētahi atu whare pukapuka, me ngā mea mai i te kohinga o ngā pukapuka hokona nuitia. E rite ana ngā utu mō te whakaroa i te wā mino ki ērā mō ngā mema tukipū.

Mēnā he kāri tāu nō tētahi atu whare pukapuka o Aotearoa, e taea ana e koe ngā mea te mino mai i Ngā Kete Wānanga o Ōtautahi i a koe e noho ana ki konei. Ka āhei ki te mino atu i ngā mea e rua noa iho, i te wā kotahi.

E taea ana e ngā taiohi mai i ngā rohe o te Hurunui, o Selwyn, o te Horomaka me te Waimakariki, te mino mea mō te kore utu. Ka tirohia anōtia tēnei whakaritenga hei te tau 2006.

Tō Kāri

E rite ana tō kāri ki tō te kāri nama, nā reira me āta tiaki, ā, kua e tuku ki tangata kē. Mēnā ka ngaro i a koe tō kāri, ka tāhaetia rānei, tēnā kia wawe tō whakamōhio mai ki a mātou. Ki te mino mea tētahi, i mua i tō whakamōhio tanga mai, he kawenga tonu tērā māu. He utu anō mō te kāri hōu.

Ngā Utu Mō Te Kāri Hou

Mā ngā pakeke **\$5**

Mā ngā taiohi **\$2**

Ko ngā mea katoa kua minohia, māu tonu te kawenga – ā, me utu e koe inā ngaro, inā tukia rānei. Ki te noho nama tonu koe, ka tonoa tētahi rōpū kohi utu hei whāi i te utu kia ea.

Tō Kete Kaute

E taea ana e koe te whakapā atu ki tō kete kaute mō whare pukapuka mā te ipurangi me tētahi Nama Huna (PIN). Mā tēnei ka taea e koe te kite atu ngā mea kua mino, he aha te wā whakarite, me te tono kia mino pukapuka anō. E taea anō hoki te toro atu ki ngā raraunga motuhake. Engari ko te mea pai rawa atu ka taea e koe te whakapā atu ki tō ake kete whare pukapuka nei ahakoa kei hea koe e noho ana.

Kia Whiwhi Nama Huna (Pin), Tēnā Pātai Atu Ki Tētahi Kaimahi O Te Whare Pukapuka.

Mēnā he imera tāu e whakamahia nuitia e koe, ka taea e mātou te tuku pānuī atu ki a koe mā tō imera.

He Pārongo Mō Te Mino

E taea ana e koe ngā mea 20 te mino, hei te wā e whakatau tūturu ai kei hea tō wāhi noho.

Ko te nuinga o ngā mea, e taea ana te mino mō ngā rā 28. Mēnā kei te hiahia koe kia mau tonu ki tētahi mea, he utu mō tēnā hei te wā ka whakahoki mai koe i taua mea. Ka tuku pānuī mātou ki a koe hei whakamaumaharatanga, mēnā he roa ake tō mau i te rua wiki.

Ngā Utu O Ia Mea Mō Te Whakaroa Ake I Te Wā Mino

Ko ngā pukapuka, kōpae me ngā rīpene **30 heneti ia rā** (\$7.50 te utu mutunga rawa)

Ko ngā kōpae rorohiko **Kotahi taara ia rā** (\$10 te utu mutunga rawa)

Ko ngā Pukapuka Hokona Nuitia **Ko te 50 heneti ia rā** (\$10 te utu mutunga rawa)

Ko ngā rīpene ataata **30 heneti ia rā**

E kore e whakaae te mino atu mēnā kei a koe tonu ētahi mea, ā, kua hipa ake i te rima wiki mai i te rā whakarite o aua mea, mēnā kua nui ake i te \$20 tō nama ki te whare pukapuka mō ngā mea kua tōmuri te whakahoki mai, mēnā kua roa ake rānei i te kotahi marama tō noho nama ki te whare pukapuka.

Te Rārangi

Kei te rārangi o te whare pukapuka nei, ko ngā kōrero e pā ana ki ngā mea katoa i roto tonu i te whare pukapuka. E taea ana e koe te whakapā atu ki te rārangi nei i ngā whare pukapuka tonu, mā tō mātou wāhi ipurangi rānei <http://library.christchurch.org.nz>.

Whakamahia Te Rārangi Kia Tirohia:

- Mēnā kei a mātou tētahi pukapuka
- Kei hea taua pukapuka e noho ana
- Mēnā e wātea ana taua mea hei mino ināianei tonu.

Te Tono Mea

E taea ana e koe te tonono mea mō te \$1.50 noa iho. He ngāwari.

Tēnā pātai atu ki te kaimahi o te whare pukapuka, patua waea mai rānei. Heoi, e taea ana hoki e koe te rārangi ipurangi nei te whakamahi hei tonono mea, ā, māu anō e tohu mai me tiki mai i hea. (Me whai koe i tētahi nama huna (PIN) kia mahi pēnei). Hei te taenga mai o taua mea, ka tuku mātou i tētahi imera, i tētahi reta rānei ki a koe.

Te Tono Mea Mai I Ngā Whare Pukapuka Kē

Mēnā kāore i a mātou tētahi mea e hiahia ana e koe, tēnā pātai mai ki a mātou kia tonono mai i ngā whare pukapuka kē – ā, he whakaritenga tēnei i waenganui i ngā whare pukapuka katoa o te motu kia taea te tonono mea, te tuku mea anō hoki. He utu mō tēnei ratonga.

Ngā Kohinga Whai Utu

Ko te nuinga o ngā mea i te whare pukapuka kāore he utu mō te mino, hāunga anō ētahi atu. Ko ēnei ētahi o aua mea whai utu:

- Ko te kohinga o ngā pukapuka hokona nuitia
- Ko ngā kōpae, ngā rīpene, ngā puka kōrerorero, me ngā akoranga reo.
- Ko ngā kōpae rorohiko

He Mema Tukipū

Mā te noho hei mema tukipū ka āhei koe ki te toro atu ki ngā whakaritonga katoa o te whare pukapuka. Kāore he utu mō te nuinga o ngā pukapuka, engari me utu koe mō ngā pukapuka kua tonono, ngā pukapuka hokona nuitia, te whakaroa i te wā mino, ngā kōpae, ngā rīpene, ngā puka kōrerorero me ngā akoranga reo.

He Mema Taiohi

Menā kāore anō kia 19 tau tō pakeke e taea ana e koe te whai hua mā te noho hei mema taiohi. Ehara i te mea e taea noatia e koe te whai hua pērā ki ērā o ngā mema tukipū, engari e taea anō hoki te tonono puka mō te Kore Utu. Ā, inā he tōmuri koe ki te whakahoki mai i āu pukapuka, kāore he utu, hāunga anō ngā kōpae rorohiko me ngā pukapuka hokona nuitia.

Ngā Utu Mō Te Whakaroa I Te Wā Mino

Ngā Pukapuka Hokona Nuitia

50 heneti ia rā

Ngā kōpae rorohiko mai i te kohinga mā ngā pakeke

\$1 ia rā.

He utu tonu ki te mino i ngā kōpae mā ngā pakeke, ngā rīpene, ngā kōpae rorohiko me ngā pukapuka hokona nuitia.

Ngā Mema Rangatōpū

Mō ngā kamupene me ngā pakihī kei Ōtautahi, e āhei ana ki te noho hei mema rangatōpū – mā tēnei e taea ana e ō kaimahi te whai pānga ki ngā rauemi o te whare pukapuka hei hāpai i ā koutou mahi pakihī.

Mā te kāri kotahi e āhei ana tō pakihī ki te toro ki ngā whakaritonga pūrongo me ngā pukapuka, ngā tohu, ngā rīpoata, me ngā rīpene ataata mō te kore utu. Hei tāpiri atu he utu iti noa iho mō ngā kōpae, ngā rīpene, me ngā kōpae rorohiko. Mō te nuinga o ngā mea e whā wiki te roa o te wā mino, ā, ka āhei ki te mino atu i ngā mea 20, i te wā kotahi.

Kia hono hei Mema Rangatōpū, me whai pakihī koe ki Ōtautahi, ā, me mau mai i te tohu nō tō pakihī tonu me tētahi pepa whakamana nō te Kaiwhakahaere Pūtea, nō te Kaipakihī Takitahi rānei.

Mēnā kei te hiahia koe ki ētahi atu kōrero e pā ana ki te noho hei mema rangatōpū, tēnā koa imera mai ki Corporate.Membership@ccc.govt.nz Me toro mai rānei ki te Wāhi Pakihī, te papa tuarua kei Te Kete Wānanga o Ōtākaro.