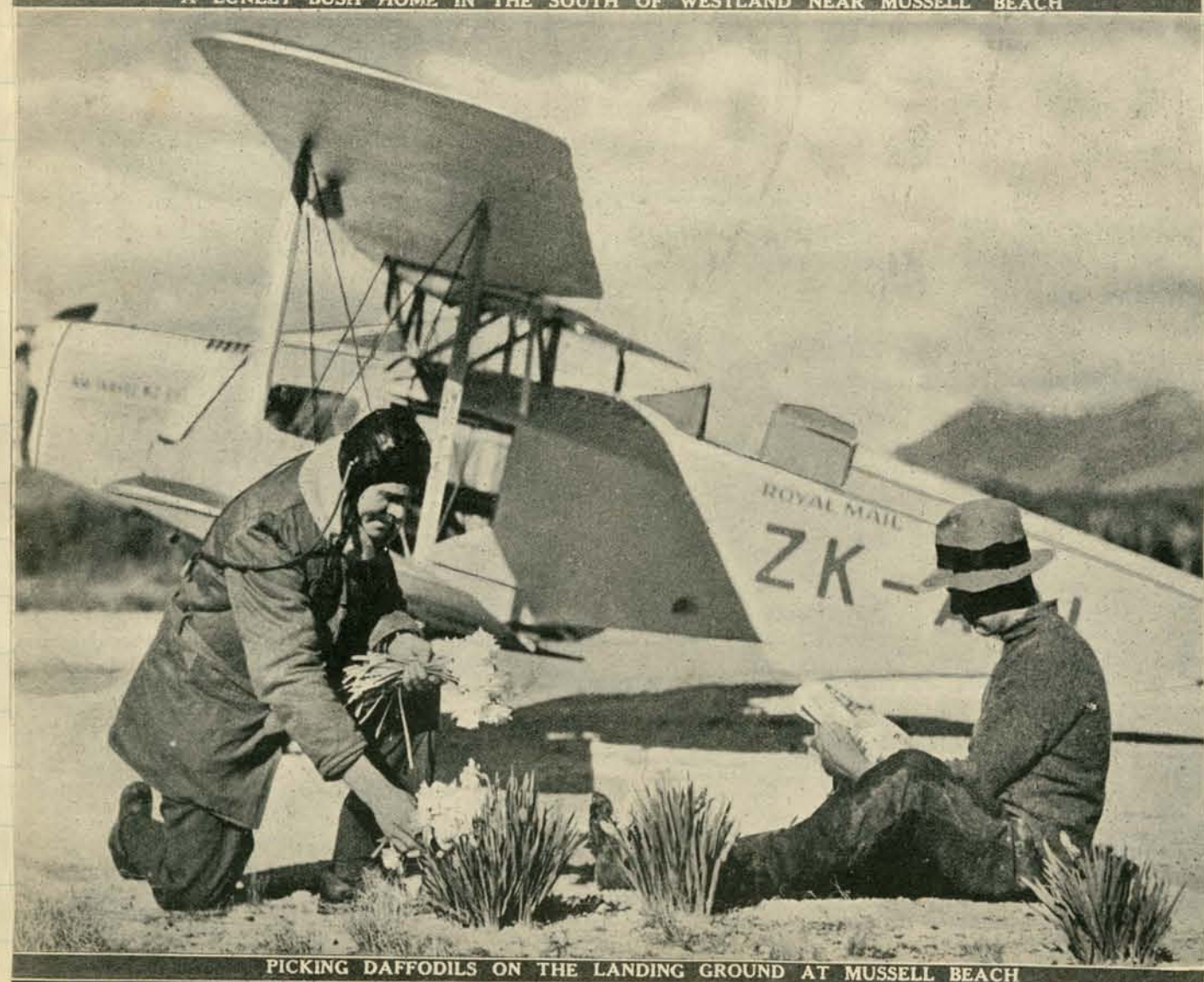




A LONELY BUSH HOME IN THE SOUTH OF WESTLAND NEAR MUSSELL BEACH



THE AEROPLANE DEPARTS FROM MR. J. CRON'S HOMESTEAD, HAAST, FOR THE SOUTH



PICKING DAFFODILS ON THE LANDING GROUND AT MUSSELL BEACH



THE MAIL ARRIVES AT MR. W. D. NOLAN'S HOMESTEAD, UPPER OKURU