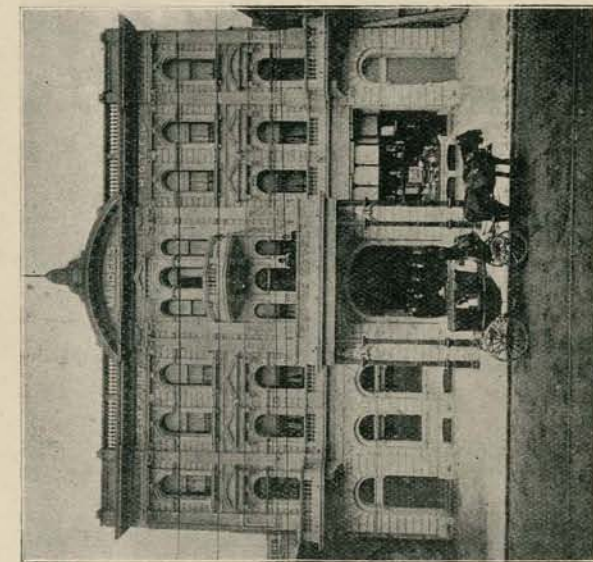
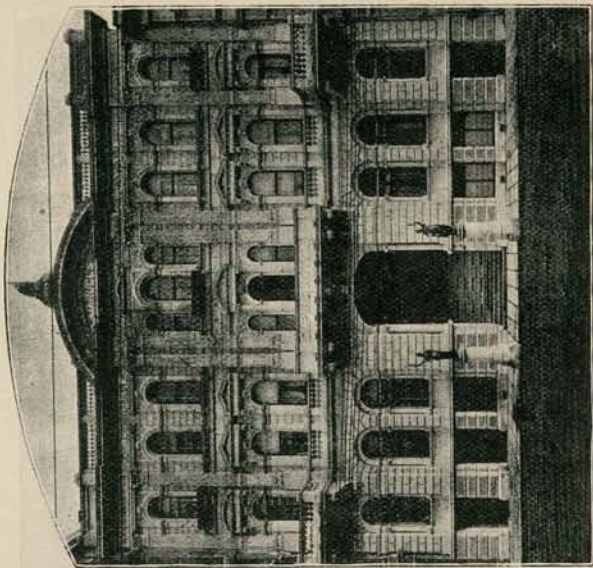


MANDEL'S NEW EMPIRE HOTEL, Wellington, N.Z.



Willis Street Frontage



Victoria Street Frontage

J. MANDEL, PROPRIETOR.

BALLANTYNES' STOCKS ARE RELIABLE IN QUALITY 21

north-west corner of the grounds, is fitted with a pump, and visitors adjourn to this place to drink the waters, which have a reputation for easing stomach, liver, and kidney troubles. The water, however, is not the pleasantest drink for all tastes, as, in addition to its alkaline and saline properties, it is strongly charged with sulphuretted hydrogen, the latter being as near an approach to the savour of a well-kept egg as can well be conceived. The springs formerly known as Nos. 1 and 8 have now been incorporated for some time but their respective analyses are as follow:—

No. 1 SPRING.

Chloride of sodium	62.09
Chloride of potassium	0.15
Chloride of lithium	Trace
Iodide of magnesium	Trace
Carbonate of lime	0.55
Carbonate of magnesia	1.77
Carbonate of iron	0.05
Sulphate of soda	7.48
Carbonate of soda	2.66
Phosphate of alumina	Trace
Silica	2.63
Total grains per gallon	77.38
Gas—Sulphuretted hydrogen	2.19

No. 8 SPRING.

Sediment—Silica and free sulphur	1.40
Nitrogen as free ammonia	0.992
" as albuminoid ammonia	0.048
" as nitric acid	0.047
Total nitrogen	0.187
Sulphuretted hydrogen, free	3.430
Sulphate of lime	9.940
" potash	1.960
" soda	0.400
Bicarbonate	7.770
Chloride	56.230
Bicarbonate of magnesia	0.640
Total fixed matter	76.940
Total grains per gallon	81.957

The total amounts of fixed salts in the two analyses correspond very closely. The sulphates and carbonates in either case are so small that the fact of their varying in the two analyses is a matter of no importance. The fact of the discovery of traces of iodine and lithium in the recent analysis is interesting.

BALLANTYNES' STOCKS ARE MODERATE IN PRICE.