



A Corner of a Southland Soldier-settler's Farm.



A Discharged Soldier's Poultry-farm near Christchurch.



The Homestead at Avonhead Training-farm, Christchurch.



Working a Motor-tractor on the Moa Seed-raising Farm.



A Returned Soldier ploughing at Avonhead.

## Men on the Land.



### Summary of Settlement by State Assistance.

**D**ISCHARGED soldiers have the option of various means of settlement on the land by the help of the State. This assistance is available for the obtaining of sections, for stocking, buildings, and other incidentals.

A discharged soldier may obtain land from the State on a basis of cash, occupation with right of purchase (at a rental of 5 per cent. on the capital value of the land), perpetual lease under the Land Act (at a rental of 4 per cent. on the capital value of the land), renewable lease under the Land for Settlements Act, with perpetual right of renewal and right of purchase (at a rental of  $4\frac{1}{2}$  per cent. on the capital value of the land). A basis of deferred payment can be arranged under special tenures.

Financial assistance for the acquisition of land may be granted to discharged soldiers for the following purposes: (a) The purchase of private or native land; (b) the acquisition by assignment or transfer of the lease of any land administered by a Land Board; and (c) the discharge of any mortgage affecting any land owned by a discharged soldier or held by him under license or lease from a Land Board. The maximum amount for any of these purposes that may be advanced to any one person is £2,500. Repayment of advances may be secured by flat mortgage for ten years, with interest at 5 per cent., or by instalment mortgage extending over a period of thirty-six years and a half, with an annual charge of 6 per cent., which includes interest and sinking fund.

In addition land-settlers may receive advances up to £500 for clearing, fencing, draining, and general improvement of sections (including buildings) and the purchase of plant, stock, implements, seeds, trees, &c. In special circumstances, when the amount of £500 is deemed to be inadequate, the Minister may authorize an additional advance not exceeding £250. In the

settlement of bush lands advances up to £1,000 may be made in ordinary cases or £1,250 in cases where special circumstances warrant the increase.

In the case of land selected by ballot (except lands proclaimed under the Discharged Soldiers Settlement Act) discharged soldiers are now entitled to the same preference as landless applicants who have children dependent upon them, or duly qualified applicants who have applied at least twice unsuccessfully. This preference applies to all ballots, whether under the Land Act or the Land for Settlements Act.

At 1st October, 1919, a sum of £3,152,749 had been expended on the purchase of 199 properties, comprising 291,217 acres, for soldier settlement. A sum of £5,629,825 had been authorized for assistance in the purchase of dwellings, private or Native land, stock, and improvements, and for discharge of mortgages. Thus the total of expenditure, undertaken and authorized, was £8,782,574 at 1st October.

A total of 3,290 soldiers had been settled on 1,162,267 acres of rural land up to 1st October, 1919. The details are,—

749 men on 140,000 acres of settlement land.

676 men on 589,275 acres of Crown and national-endowment land.

1,865 men assisted to acquire 432,992 acres of privately owned land.

Land available for settlement at 1st October had a total area of 651,613 acres, comprising 109,028 acres ready for immediate selection, and 542,585 acres available for settlement but not quite ready for offering.





General View of Mangateparu Settlement, Auckland, for Discharged Soldiers.



Chain-harrowing at Mangateparu.

A Settler's Four-bail Cow-shed at Mangateparu.



A Portion of the Kokatahi Settlement, Westland, for Discharged Soldiers.



General View of Erina Settlement, Marlborough, for Discharged Soldiers.



A Discharged Soldier's Orchard at Stoke.



A Discharged Soldier's Market Garden near Nelson.



Discharged Soldiers' Cropping and Dairying Land near Nelson.

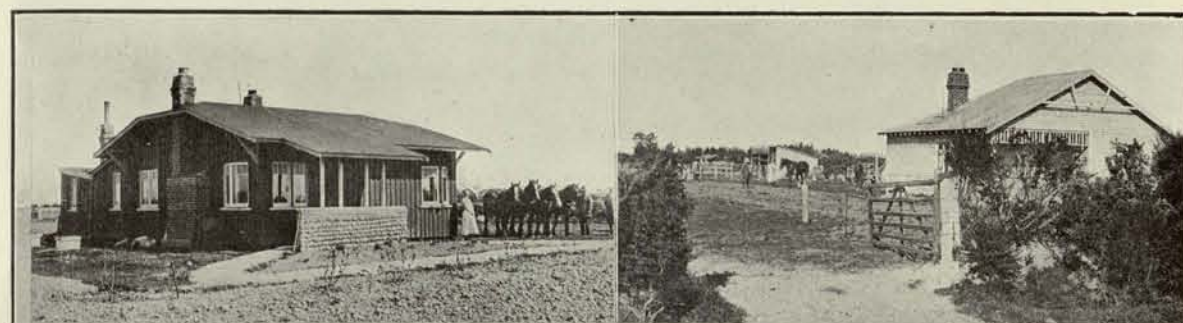




Portions of Beattie Settlement Hawke's Bay, for Discharged Soldiers.



Portion of Leeston Settlement, Canterbury, for Discharged Soldiers.



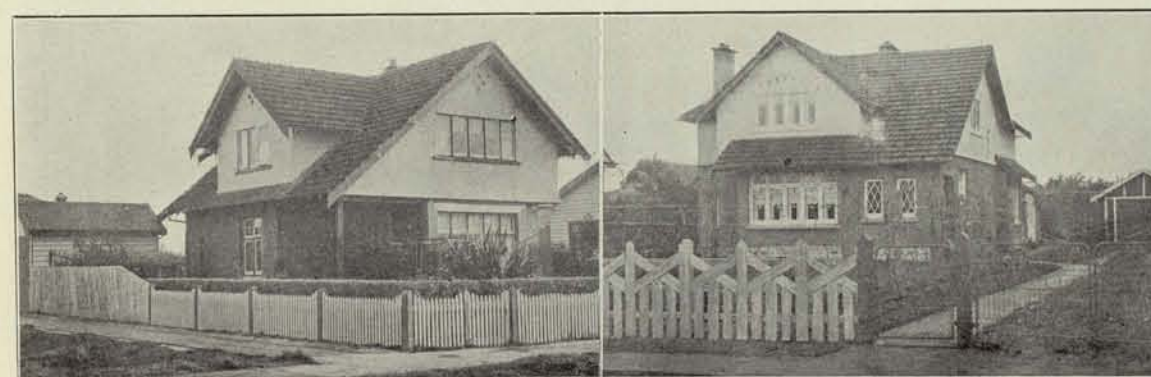
Soldier-settlers' Houses on Leeston Settlement. The house on the left was built by the soldier himself.



Portion of Kokatahi Settlement, Westland, for Discharged Soldiers.

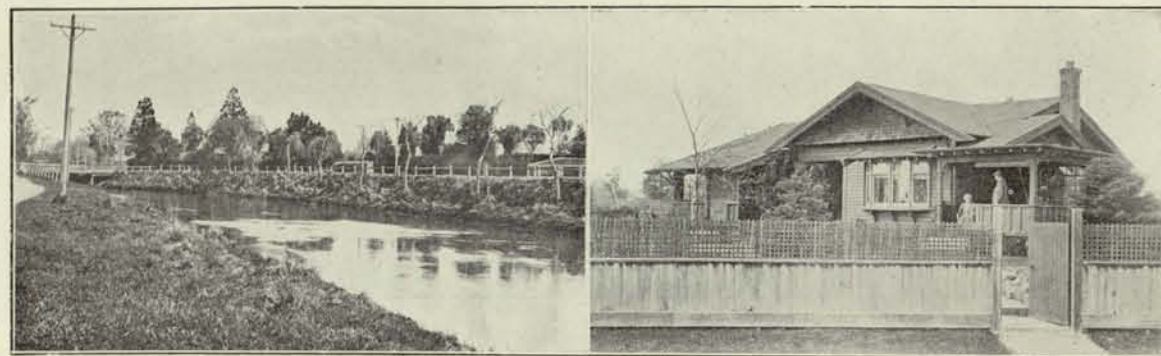


A Discharged Soldier's New Home at Blenheim.

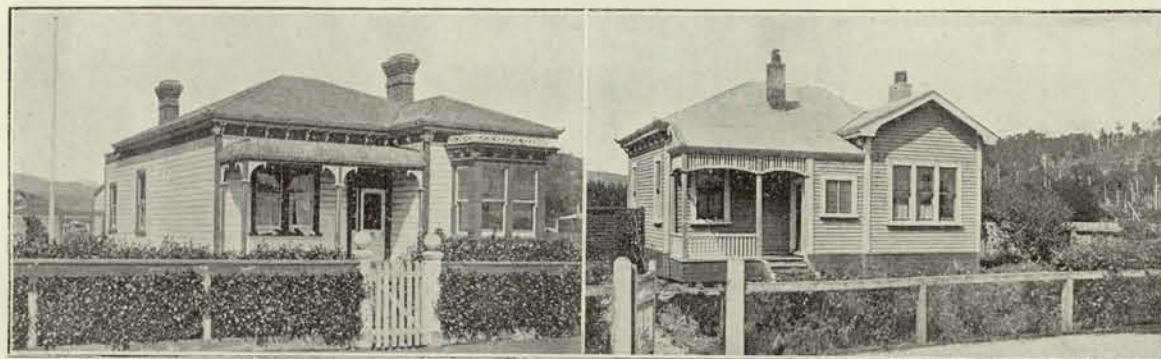


Discharged Soldiers' New Homes at Invercargill.

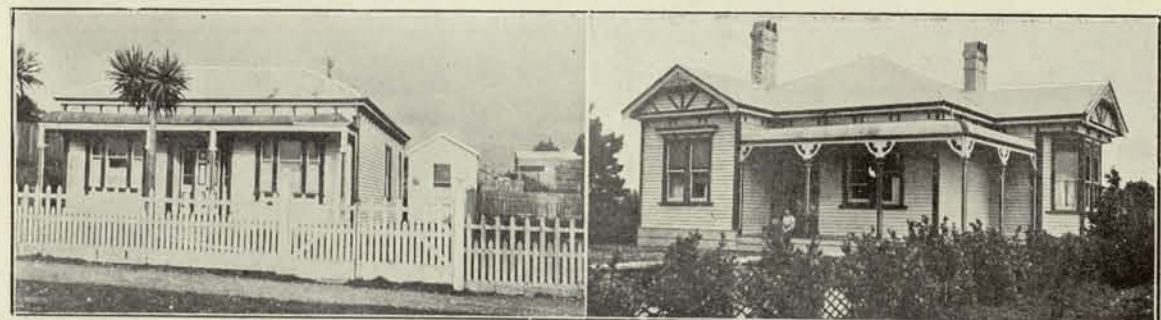




A Discharged Soldier's New Home at Christchurch.



Discharged Soldiers' New Homes at Greymouth.



Discharged Soldiers' New Homes at Hokitika.

## Homes for Soldiers.



### Easy Way to Ownership Appeals to Many.

SEVERAL courses are open to the soldier for obtaining a house, by help of the State, in urban or suburban localities. The Minister of Lands may set apart land for the building of dwellings on the system pioneered by the Labour Department with workers' houses. In those cases the principal, with interest, is repayable over a period of 25½ years.

If the soldier prefers to buy an existing house and site he may receive an advance not exceeding £1,000. If the applicant owns a site he may receive an advance, not exceeding £750, towards the cost of building

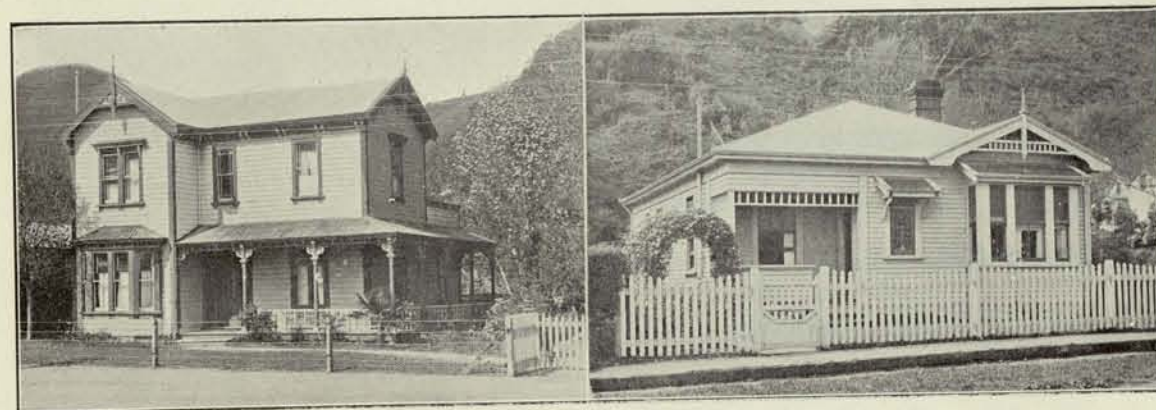
a house. In each case repayment of loans may be arranged by flat mortgage for ten years, with interest at 5 per cent., or by instalment mortgage over a period of 25½ years, at an annual charge of 7 per cent., which includes interest and sinking fund.

At 1st October, 1919, the total of these houses was 2,416.

The Repatriation Department advances up to £50, free of interest, to discharged soldiers for the purchase of furniture. Up to 20th October, 2,293 loans (a total of £99,066) had been approved for this purpose.

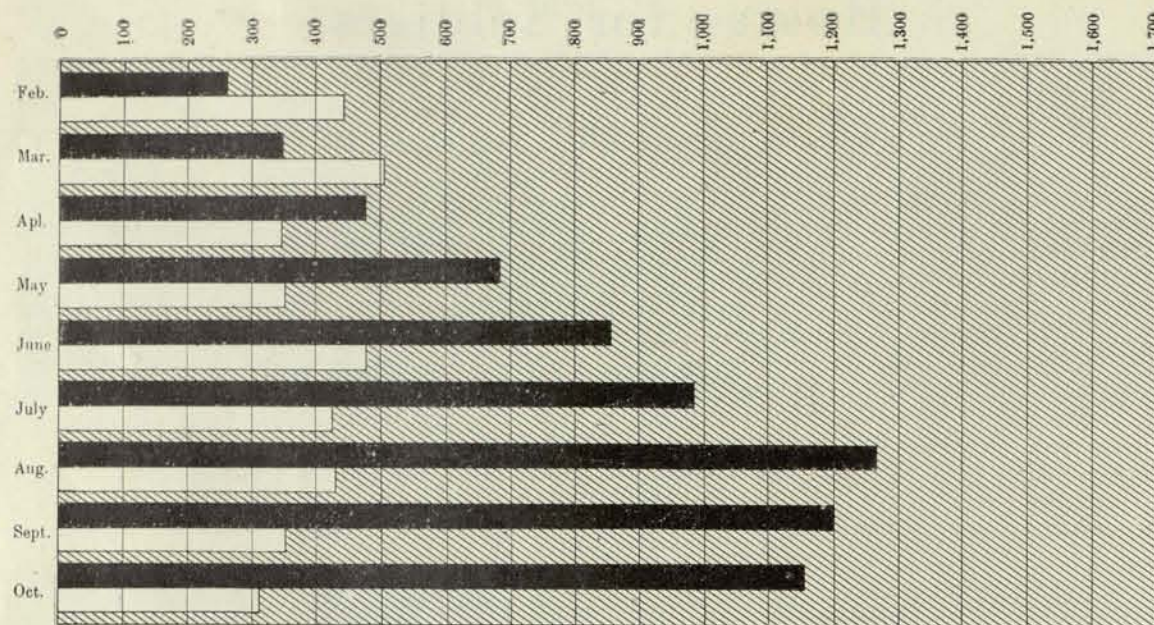


Discharged Soldiers' New Homes at Blenheim.



Discharged Soldiers' New Homes at Nelson.





EMPLOYMENT OF DISCHARGED SOLDIERS.

In this graph the black bars show the numbers of men placed in employment each month by the Repatriation Department. The white bars show the numbers remaining on the register.



TRAINING OF DISCHARGED SOLDIERS.

In this graph the white bars show the numbers of men for whom training has been arranged each month. The black bars show the total numbers actually in training at the 20th of each month.

## Repatriation Summary.

IN an official report covering the month from 20th September to 20th October, 1919, the Director of Repatriation, Mr. J. R. Samson, gives also a summary of the eight months' operations of the Department (from the time when the Discharged Soldiers' Information Department evolved smoothly into the new Repatriation Department). The clear, terse statement of facts and figures is well worth careful reading by the general public.

The Department's register now (20th October) comprises the names of 74,118 men, and of this number 47,453 have returned to the Dominion since the beginning of the year (states the Director).

Demobilization cards are distributed thus:—

Auckland	..	15,679
Wellington	..	19,636
Canterbury	..	9,308
Otago	..	8,666
Head Office	..	20,829

74,118

**Financial Assistance.**—During the eight months 1,890 loans for the purpose of establishing discharged soldiers in business (involving an expenditure of £427,824) have been approved by the Ministerial Board, and during the month under review £113,703 was paid out on behalf of soldiers for furniture, tools, business, sustenance, training fees, subsidized wages, assistance to apprentices, &c. The total amount expended to date under these headings is over half a million pounds (£504,215).

**Employment.**—Notwithstanding the large number of men who are being discharged daily, the employment figures disclose an excellent position. During the month 1,141 men were placed in situations, and it is pleasing to note that the number remaining on the Employment Wanted Register for the whole of the Dominion at the date of this report is the lowest on record—307—about a week's "placings." During the month 46 men were granted unemployment sustenance allowances for a week or more, and 12 were actually in receipt of same at the date of this report.

**Training.**—The vocational-training figures show a further increase; 406 men began training in new trades or occupations during the month. The total number for whom training has been arranged to 20th October is 2,664. Of this number 428 have finished their course, and 2,236 are still being trained.

**Repayments.**—During the month £5,079 was repaid by instalments, making a total of £13,521 received to date in reduction of loans granted.

FINANCIAL ASSISTANCE.  
APPLICATIONS FROM 20TH SEPTEMBER TO 20TH OCTOBER.

Kind of Assistance.	Auckland		Wellington		Canterbury		Otago		Total.	
	Received.	Approved.	Received.	Approved.	Received.	Approved.	Received.	Approved.	Received.	Approved.
Pending from last return	133	..	165	..	73	..	62	..	433	..
Furniture ..	187	179	215	183	95	71	81	69	578	502
Tools ..	20	25	46	36	15	8	16	13	97	82
Plant (horse vehicle)	9	7	23	16	10	8	8	5	50	36
Plant (motor vehicle)	21	17	37	26	18	10	7	3	83	56
Plant ..	34	38	10	7	27	21	3	1	74	67
Business (new)	18	31	69	48	16	13	25	23	128	115
Business (established)	50	43	94	65	22	16	25	23	191	147
Assisted passages from N.Z.	..	1	5	3	2	2	2	1	9	7
Transportation in N.Z.	..	..	45	45	29	29	10	9	84	83
Total cases	472	341	709	429	307	178	239	147	1,727	1,095

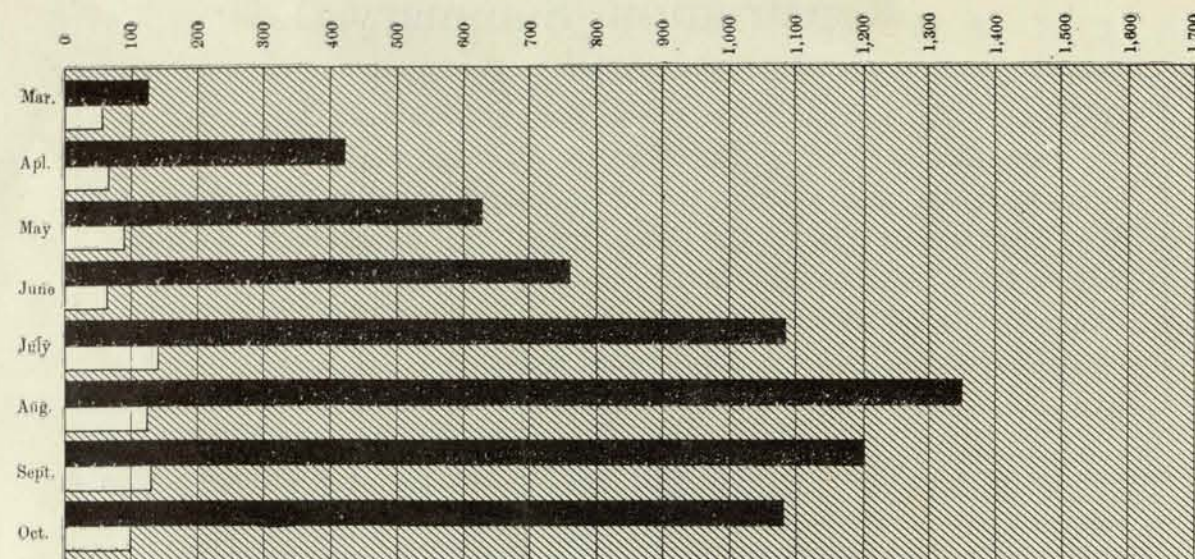
APPLICATIONS IN EIGHT MONTHS.

Furniture ..	1090	1016	1101	945	626	491	481	430	3298	2882
Tools ..	185	177	298	220	93	60	76	62	652	510
Plant (horse vehicle)	41	37	86	57	61	39	32	22	220	155
Plant (motor vehicle)	196	132	113	60	98	58	42	21	449	271
Plant ..	165	139	62	34	125	76	30	24	382	273
Business (new)	388	308	435	236	156	107	152	106	1131	757
Business (established)	282	229	419	285	200	137	152	109	1053	760
Assisted passages from N.Z.	31	21	39	20	6	5	8	5	84	51
Transportation in N.Z.	351	351	448	443	136	136	60	58	995	988
Total to 20th October	2729	2410	3001	2300	1501	1109	1033	837	8264	6656

SUMMARY OF APPLICATIONS.

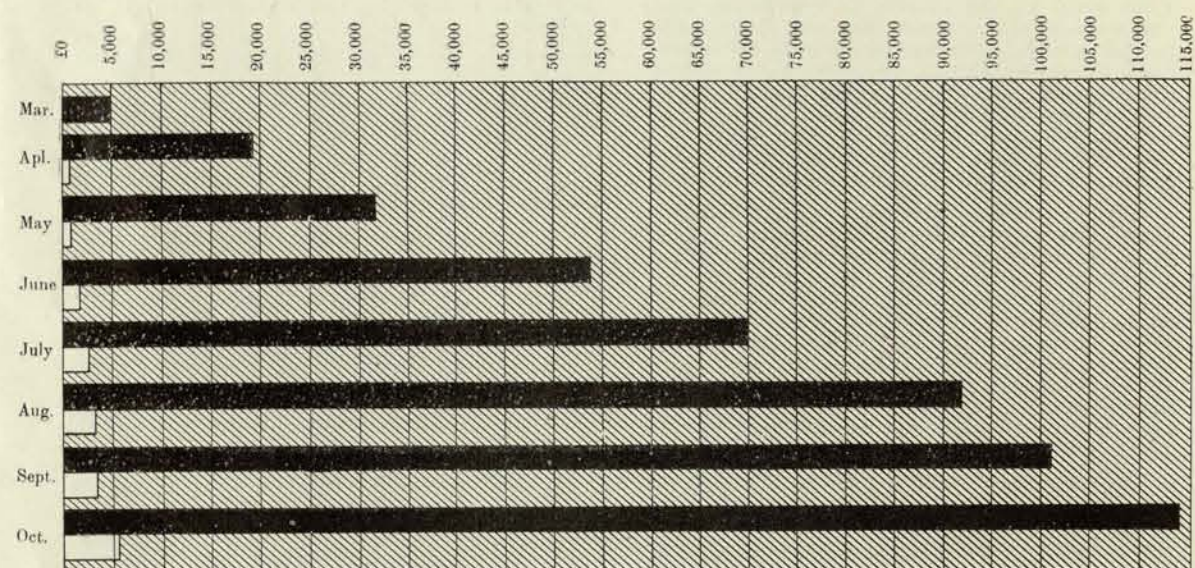
Received ..	2729	..	3001	..	1501	..	1033	..	8264	..
Granted ..	..	2410	..	2300	..	1109	..	837	..	6656
Pending ..	..	81	..	180	..	92	..	77	..	430
Refused ..	..	177	..	278	..	200	..	68	..	723
Withdrawn ..	..	61	..	243	..	100	..	51	..	455
Total ..	..	2729	..	3001	..	1501	..	1033	..	8264





FINANCIAL ASSISTANCE FOR DISCHARGED SOLDIERS.

In this graph the black bars show the number of applications for financial assistance approved by the Repatriation Department each month. The white bars show the number declined.



EXPENDITURE ON DISCHARGED SOLDIERS.

In this graph the black bars show the Repatriation Department's expenditure on discharged soldiers each month. The white bars show the amounts repaid by soldiers each month.

## EMPLOYMENT.

RETURN SHOWING NUMBER OF MEN PLACED IN EMPLOYMENT FROM 20TH SEPTEMBER TO 20TH OCTOBER.

Group.	Auckland.	Wellington.	Canterbury.	Otago.	Total.
Wood, furniture, timber, &c. . .	27	14	13	15	69
Engineers, metal-workers . . .	29	45	12	29	115
Food, tobacco, &c. . .	20	11	8	5	44
Clothing, boots, &c. . .	9	8	14	5	36
Books, printing, &c. . .	7	6	3	5	21
Other manufacturing . . .	24	2	14	10	50
Building . . .	7	22	20	6	55
Mining, quarrying, &c. . .	3	1	19	7	30
Rail and tram services . . .	..	..	1	8	9
Other land transport . . .	5	13	10	3	31
Shipping, wharf labour, &c. . .	..	8	10	1	19
Pastoral, agriculture, &c. . .	46	85	30	21	182
Domestic, hotels, &c. . .	9	19	4	1	33
General labour and miscellaneous . . .	47	69	71	30	217
Clerical . . .	19	31	15	7	72
Government . . .	44	50	23	32	149
Monthly total . . .	296	385	274	186	1,141
Aggregate to date . . .	2,484	4,451	2,587	1,686	11,208
Remaining on "Employment Wanted" Register . . .	104	76	76	51	307
Granted unemployment sustenance to date . . .	253	125	305	36	719
Receiving unemployment sustenance at 20th October . . .	2	3	6	1	12

## TRAINING.

RETURN SHOWING MEN UNDER DEPARTMENT'S SUBSIDIZED-WAGES SCHEME OR RECEIVING SUSTENANCE WHILST ATTENDING TECHNICAL CLASSES.

NACE WELSH ATTENDING TECHNICAL CLASSES.

Group.	Auckland		Wellington.		Canterbury.		Otago.		Total.	
	Schools, &c.	Subsidized Workers.	Schools, &c.	Subsidized Workers.	Schools, &c.	Subsidized Workers.	Schools, &c.	Subsidized Workers.	Schools, &c.	Subsidized Workers.
Wood ..	2	122	1	58	..	71	..	97	3	348
Leather ..	..	43	..	34	5	30	..	28	..	135
Metal ..	61	172	34	149	53	90	9	131	17	542
Clothing ..	..	14	11	11	17	..	..	21	11	63
Commercial ..	49	22	28	11	68	11	60	15	255	59
Farming ..	39	45	38	81	2	10	7	89	143	143
Professional ..	32	23	11	9	18	..	79	5	160	37
Other groups	6	92	18	28	14	47	2	22	40	189
Total ..	189	533	211	381	160	276	160	326	720	1,516

Began training in month under review—

Technical schools, 86	..	..	406
Subsidized workers, 320	..	..	..
At present in training . . .	..	..	2,236
Finished training . . .	..	..	428
Total for whom training has been arranged . . .	..	..	2,664

## LOANS AND GRANTS.—£504,215 IN EIGHT MONTHS.

The following table shows the financial assistance granted to discharged soldiers during the eight months to 20th October. Shillings and pence are omitted to facilitate the setting.

Kind of Assistance.	Auckland.		Wellington.		Canterbury.		Otago.		Total.	
	Number.	Amount.	Number.	Amount.	Number.	Amount.	Number.	Amount.	Number.	Amount.
<b>Loans for—</b>		£		£		£		£		£
Business . . .	726	135,816	586	128,656	412	51,484	228	37,299	1,952	353,257
Furniture . . .	689	30,931	813	35,859	457	16,917	334	15,357	2,293	99,066
Tools, &c. . .	150	2,441	237	4,737	60	982	66	1,000	513	9,162
<b>Grants for—</b>		£		£		£		£		£
Unemployment sustenance . . .	253	1,566	125	717	305	1,343	36	92	719	3,719
Training sustenance, &c. . .	860	15,716	712	8,303	516	6,167	576	6,956	2,664	37,205
Transportation . . .	..	570	..	866	..	214	..	153	..	1,805
Grand total to date . . .	..	187,044	..	179,201	..	77,110	..	60,860	..	504,215

## BUSINESS LOANS OVER £50 APPROVED TO 20TH OCTOBER.

District.	Number of Applications.	Amount.
Auckland . . .	732	£ 169,892 19 10
Wellington . . .	624	£ 144,858 15 8
Canterbury . . .	330	£ 68,094 18 10
Otago . . .	204	£ 44,977 12 0
Total . . .	1,890	£ 427,824 6 4

## REPAYMENT OF LOANS.

AMOUNTS TO 30TH SEPTEMBER, 1919.

Auckland.	Wellington.	Canterbury.	Otago.	Total.
£ s. d.	£ s. d.	£ s. d.	£ s. d.	£ s. d.
4,392 17 8	4,989 0 3	1,555 15 6	2,584 1 11	13,521 15 4



## The End Crowns the Work.

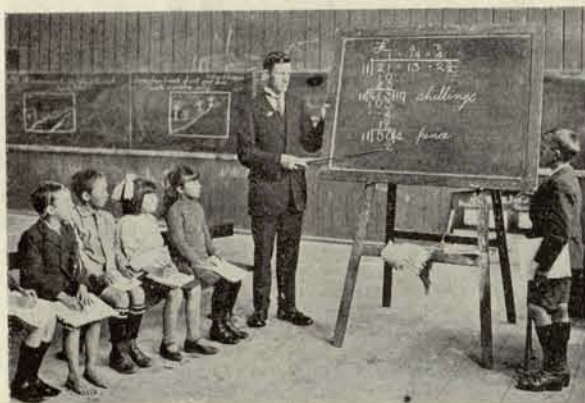


Where there's a Will there's a Way.

ONE Sunday morning, at Trentham Camp, in the summer of 1915, the writer witnessed a farewell open-air service for men about to take ship for fields of war far overseas, and heard these words which the Apostle Paul once gave to the Ephesians:—

Wherefore take unto you the whole armour of God, that ye may be able to withstand in the evil day, and, having done all, to stand.

The soldiers of civilization did all in the fateful days when the desperate legions of Germany made their final onset in 1918. New Zealand's sons stood firm with others—and won.



Disabled Carpenter becomes a School-teacher.  
This soldier has his right hand and arm severely disabled.

Some suffered wounds enough to make even a stout spirit sigh for rest perpetual, but they stand to their work here, unconquerable at the desk or bench, as they were in the field or trench. Injuries of the war have brought an end to the work in which some men were skilled, but they have cheerfully turned their minds and hands to

new occupations, and they have forged ahead at a pace which has pleasantly surprised themselves and their friends.



This man returned at the end of 1917 suffering from a gunshot wound in the right foot, and was unable to go back to the pre-war occupation of a bushman. He was placed in May, 1918, to learn the trade of a boot-repairer. He made such progress with his work that at the end of fifteen months he was able to start in business on his own account with his retained subsidy of £45 and with a small loan added by the Department. His business promises to make him an employer soon.



