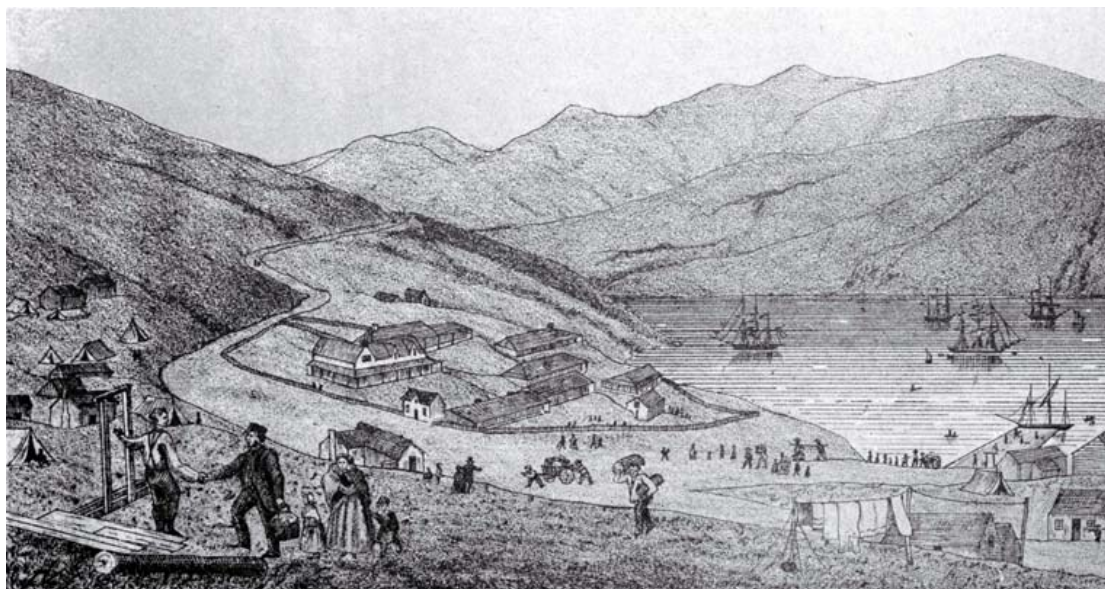


**A guide to some of the 19th century  
passenger lists in newspapers, on  
microfilm, and some other sources held at  
Christchurch City Libraries**



Port Lyttelton, showing the first four ships and emigrants landing from the Cressy, December 28th 1850.

- The First Four Ships arrived December 1850. The ships arriving between December 1850-1853 were Canterbury Association vessels. The ships arriving between 1853-1855 came independently and not under the auspices of a government or quasi-government body.
- *The Lyttelton Times* was published from January 1851; *The Press* was published from 1861. At first both were published twice weekly meaning passenger lists appear in a shipping column a few days after a vessel arrives.
- 1850-1855 paying passengers are usually listed. Assisted passengers are not listed by name, appearing only as “and 27 in the steerage”.
- From 1855-1870 the Canterbury Provincial Government was in charge of immigration to Canterbury and had an emigration agent stationed in London.
- To help find employment for migrants, the government supplied lists of assisted migrants to the newspapers. The names of male heads of families, their home county in Britain (or their country in Europe), if they had a spouse and the number of children they brought, are published. The first names of a wife and children are not given. Children of immigrants who were older than about 12 were considered adults and are listed among the single men and women along with other single people. Sometimes the assisted people are grouped according to their occupations so that prospective employers might quickly select prospective employees. Lists are also sometimes published prior to a ship’s arrival to assist employers.
- For larger vessels there will be a brief report of the arrival of the ship in the Shipping column with a few cabin passengers being listed. A more detailed passenger list will appear further down the page or in a different issue of the newspaper.
- In 1870, when the Vogel public works scheme began, the Central Government took over control of immigration. The provincial government and newspapers no longer acted as an employment agency. The names of the government immigrants do not always appear, although the newspapers continue to publish passenger lists until about 1885 with often quite detailed descriptions of the voyage and, sometimes, words of praise from the passengers to captain and crew. Only when there was mass illness on board are individuals named.
- Note that both international and port-to-port sailings within New Zealand have passenger lists in the newspapers. This resource lists both types 1851-1858 inclusive. From 1859 only passenger lists from international voyages are included.

**Abercrombie** (arrived 1840) in Eadie, F. [\*Roll of early settlers and descendants in the Auckland Province prior to the end of 1852\*](#)

**Accrington** (arrived 07/09/1863) in [\*The Lyttelton Times\*](#), 29/08/1863 p 4 and 09/09/1863, p 4

**Achilles** (arrived 1840) in Eadie, F. [\*Roll of early settlers and descendants in the Auckland Province prior to the end of 1852\*](#)

**Acis** (arrived 06/09/1857) in [\*The Lyttelton Times\*](#), 09/09/1857, p 5

**Acis** (arrived 30/01/1858) in [\*The Lyttelton Times\*](#), 03/02/1858, p 4

**Active** (arrived 16/09/1814) in Eadie, F. [\*Roll of early settlers and descendants in the Auckland Province prior to the end of 1852\*](#)

**Active** (arrived 12/08/1819) in Eadie, F. [\*Roll of early settlers and descendants in the Auckland Province prior to the end of 1852\*](#)

**Adelaide** (18/09/1839-07/03/1840) in Ward, L.E. [\*Early Wellington\*](#), p 33  
Also in Eadie, F. [\*Roll of early settlers and descendants in the Auckland Province prior to the end of 1852\*](#)

**Adelaide** (arrived 06/09/1857) [\*The Lyttelton Times\*](#), 09/09/1857, p 5

**Admiral Grenfell** (arrived 12/03/1854) in [\*The Lyttelton Times\*](#), 18/03/1854, p 6

**Aethelred** (19/03/1880-16/06/1880) in [\*The Lyttelton Times\*](#), 17/06/1880, p 4

**Agness** (arrived 17/08/1855) in [\*The Lyttelton Times\*](#), 22/08/1855, p 5

**Agra** (arrived 1851) in Eadie, F. [\*Roll of early settlers and descendants in the Auckland Province prior to the end of 1852\*](#)

**Agra** (arrived 1851) in Ward, L. E. [\*Early Wellington\*](#), p 160

**Ajax** (08/09/1848-08/01/1849) in Hocken, T M. [\*Contributions to the early history of New Zealand \(Otago\)\*](#), Appendix F

**Ajax** (arrived 09/03/1849) in Eadie, F. [\*Roll of early settlers and descendants in the Auckland Province prior to the end of 1852\*](#)

**Akhbar** (arrived 10/04/1854) [\*The Lyttelton Times\*](#), 15/04/1854, p 6

**Alhambra** (arrived 22/03/1878) in [\*The Lyttelton Times\*](#), 23/03/1878, p 2

**Alice** (10/10/1874-04/02/1875) in [\*The Lyttelton Times\*](#), 05/02/1875, p 2

**Alpha** (arrived 11/09/1851) in [\*The Lyttelton Times\*](#), 13/09/1851, p 4

**Amateur** (arrived 07/06/1874) in [\*The Lyttelton Times\*](#), 08/06/1874, p 2

**Ambrosine** (25/10/1859-15/02/1860) in [\*Emigration to Canterbury: shipping lists, 1856-1874\*](#) (microfilm)  
Also in [\*The Lyttelton Times\*](#), 18/02/1860, p 4 and 22/02/1860, p 4

**Amelia Thompson** (25/03/1841-03/09/1841) in Rutherford, J. & Skinner, W. H. [\*The establishment of the New Plymouth settlement in New Zealand, 1841-1843\*](#), Chapter 14.

**Amelia Thompson** (28/02/1841-05/09/1841) in Shaw, M N. [\*Hamblyn family history: 1841-1855-1876: Plymouth to New Plymouth\*](#), p 5

**Amelia Thompson** (arrived 03/09/1841) in Eadie, F. [\*Roll of early settlers and descendants in the Auckland Province prior to the end of 1852\*](#)

**Amelia Thompson** (arrived 1841) in Ward, L. E. [\*Early Wellington\*](#), p 86

**Amherst** (arrived 21/04/1855) in [\*The Lyttelton Times\*](#), 25/04/1855, p 5

**Amherst** (arrived 16/08/1855) in [\*The Lyttelton Times\*](#), 18/08/1855, p 4

**Amherst** (arrived 19/05/1856) in [\*The Lyttelton Times\*](#), 21/05/1856, p 7

**Amoor** (arrived 01/07/1864) in [\*The Lyttelton Times\*](#), 02/07/1864, p 4

**Angelia** (arrived 1848) in Eadie, F. [\*Roll of early settlers and descendants in the Auckland Province prior to the end of 1852\*](#)

**Ann** (arrived 16/05/1848) in Eadie, F. [\*Roll of early settlers and descendants in the Auckland Province prior to the end of 1852\*](#)

**Ann** (arrived 15/09/1853 in [\*The Lyttelton Times\*](#), 17/09/1853, p 6

**Ann of Arbroth** (arrived 1842) in Eadie, F. [\*Roll of early settlers and descendants in the Auckland Province prior to the end of 1852\*](#)

**Anna Watson** (arrived 16/09/1840) in Eadie, F. [\*Roll of early settlers and descendants in the Auckland Province prior to the end of 1852\*](#)

**Annabella** (arrived 1826) in Eadie, F. [\*Roll of early settlers and descendants in the Auckland Province prior to the end of 1852\*](#)

**Annadale** (arrived 1843) in Eadie, F. [\*Roll of early settlers and descendants in the Auckland Province prior to the end of 1852\*](#)

**Annie of Arbroath** (arrived 1841) in Eadie, F. [\*Roll of early settlers and descendants in the Auckland Province prior to the end of 1852\*](#)

**Antares** arrived 23/01/1878 in [\*The Lyttelton Times\*](#), 24/01/1878, p 2

**Antilla** (arrived 08/12/1841) in Eadie, F. [\*Roll of early settlers and descendants in the Auckland Province prior to the end of 1852\*](#)

**Antilla** (arrived 05/01/1842) in Eadie, F. [\*Roll of early settlers and descendants in the Auckland Province prior to the end of 1852\*](#)

**Aquilla** (arrived 03/1839) in Eadie, F. [\*Roll of early settlers and descendants in the Auckland Province prior to the end of 1852\*](#)

- Arab** (03/061841-10/1841) in Ward, L. E. [Early Wellington](#), p 96
- Arabia** arrived 18/12/1851 in [The Lyttelton Times](#), 20/12/1851, p 4
- Argenti** arrived 11/10/1855 in [The Lyttelton Times](#), 31/10/1855, p 5
- Ariel** (arrived 1840) in Eadie, F. [Roll of early settlers and descendants in the Auckland Province prior to the end of 1852](#)
- Ashburton** (arrived 15/01/1858) in [The Lyttelton Times](#), 16/01/1858, p 4
- Ashburton** (arrived 19/12/1859) in [The Lyttelton Times](#), 21/12/1859, p 4
- Ashmore** (arrived 16/11/1854) in [The Lyttelton Times](#), 18/11/1854, p 4
- Ashmore** (arrived 27/03/1856) in Rutherford, J. & Skinner, W. H., [The establishment of the New Plymouth settlement in New Zealand, 1841-1843](#), Chapter 14
- Asterope** (22/06/1871-29/09/1871) in [The Lyttelton Times](#), 30/09/1871, p 2
- Atrato** (10/02/1874-08/06/1874) in Provan, M & Cartwright, W. [Cartwrights in early South Canterbury](#), p 23
- Atrato** (10/02/1874-20/06/1874) in [Emigration to Canterbury: shipping lists, 1856 1874](#) (microfilm) Also in [The Lyttelton Times](#), 20/06/1874 and 22/06/1874, p 2
- Auckland** (arrived 13/09/1855) in [The Lyttelton Times](#), 15/09/1855, p 4
- Auckland** (arrived 16/08/1863) in [The Lyttelton Times](#), 19/08/1863, p 4
- Aurora** (18/09/1839-22/01/1840) in Ward, L. E. [Early Wellington](#), p 23
- Avalanche** (arrived 27/02/1863) in [The Lyttelton Times](#), 28/02/1863, p 4
- Bahia** (26/07/1863-07/12/1863) in "Shipping Intelligence", [The Lyttelton Times](#), 10 December 1863, p 4. Cabin and second cabin passengers listed plus account of voyage and arrival.
- Ballochmyle** (arrived 01/06/1874) in [The Lyttelton Times](#), 02/06/1874, p 2
- Balnagwith** (arrived 25/04/1854) in [The Lyttelton Times](#), 06/05/1854, p 6
- Bangalore** (arrived 23/12/1843) in Eadie, F. [Roll of early settlers and descendants in the Auckland Province prior to the end of 1852](#)
- Bangalore** (arrived 23/12/1843) in Eadie, F. [Roll of early settlers and descendants in the Auckland Province prior to the end of 1852](#)
- Bangalore** (06/05/1851-21/08/1851) in [Canterbury jubilee celebrations : Old Colonists' Committee... passenger lists of Canterbury Association ships](#)
- Barbara Gordon** (arrived 1852) in Ward, L. E. [Early Wellington](#), p 160

- Beautiful Star** (arrived 26/06/1874) in Provan, M & Cartwright, W. [Cartwrights in early South Canterbury](#), p 23
- Bee** (arrived 1839) in Eadie, F. [Roll of early settlers and descendants in the Auckland Province prior to the end of 1852](#)
- Belisama** (arrived 14/02/1857) in “Shipping News”, [The Lyttelton Times](#), 18 February 1857, p 6. Six passengers listed.
- Bellissima** (26/06/1864-31/10/1864) in “Shipping Intelligence”, [The Lyttelton Times](#), 1 November 1864, p 4. Cabin passengers listed, also steerage passengers plus a description of the voyage
- Bella Marina** (arrived 27/05/1844) in Rutherford, J. & Skinner, W. H. [The establishment of the New Plymouth settlement in New Zealand, 1841-1843](#), Chapter 14
- Bellena** (arrived 1841) in Eadie, F. [Roll of early settlers and descendants in the Auckland Province prior to the end of 1852](#)
- Bellina** (arrived 1841) in Eadie, F. [Roll of early settlers and descendants in the Auckland Province prior to the end of 1852](#)
- Bellissima** (arrived 31/10/1864) in [The Lyttelton Times](#), 01/11/1864, p 4
- Ben More** (19/04/1872-04/08/1872) in [The Lyttelton Times](#), 06/08/1872, p 2
- Ben Nevis** (arrived 1841) in Eadie, F. [Roll of early settlers and descendants in the Auckland Province prior to the end of 1852](#)
- Bengal Merchant** (30/10/1839-20/02/1840) in Ward, L. E. [Early Wellington](#), p 28  
Also in Fitzsimons, M. [Memories of the past](#), p 5
- Bengal Planter** (arrived 1839) in Eadie, F. [Roll of early settlers and descendants in the Auckland Province prior to the end of 1852](#)
- Berhampore** (arrived 18/06/1849) in Eadie, F. [Roll of early settlers and descendants in the Auckland Province prior to the end of 1852](#)
- Berkshire** (02/10/1849-01/02/1850) in Hocken, T M., [Contributions to the early history of New Zealand \(Otago\)](#), Appendix F
- Berkshire** (07/10/1849-18/01/1850) in Rutherford, J. & Skinner, W. H. [The establishment of the New Plymouth settlement in New Zealand, 1841-1843](#), Chapter 14
- Berman** (arrived 1842) in Eadie, F. [Roll of early settlers and descendants in the Auckland Province prior to the end of 1852](#)
- Bernian** (arrived 1842) in Ward, L. E. [Early Wellington](#), p 115
- Bernicia** (07/07/1848-12/12/1848) in Hocken, T. M. [Contributions to the early history of New Zealand \(Otago\)](#), Appendix F

- Bernicia** (arrived 03/11/1848) in Rutherford, J. & Skinner, W. H. [\*The establishment of the New Plymouth settlement in New Zealand, 1841-1843\*](#), Chapter 14
- Bernicia** (arrived 1848) in Ward, L. E. [\*Early Wellington\*](#), p 151
- Berwick Castle** (arrived 13/12/1852) in Eadie, F. [\*Roll of early settlers and descendants in the Auckland Province prior to the end of 1852\*](#)
- Birman** (10/1841-02/1842) in Ward, L. E. [\*Early Wellington\*](#), p 102
- Blackbird** (arrived 30/12/1834) in Eadie, F. [\*Roll of early settlers and descendants in the Auckland Province prior to the end of 1852\*](#)
- Blair Gowrie** (arrived 22/08/1875) in [\*The Lyttelton Times\*](#), 24/08/1875, p 2
- Blenheim** (arrived 27/12/1840) in Eadie, F. [\*Roll of early settlers and descendants in the Auckland Province prior to the end of 1852\*](#)
- Blenheim** (25/08/1840-02/1841) in Ward, L. E. [\*Early Wellington\*](#), p 78
- Blenheim** (02/07/1842-19/11/1842) in Rutherford, J. & Skinner, W. H. [\*The establishment of the New Plymouth settlement in New Zealand, 1841-1843\*](#), Chapter 14
- Blue Jacket** (arrived 14/11/1865) in [\*The Lyttelton Times\*](#), 15/11/1865, p 2
- Blue Jacket** (arrived 14/10/1866) in [\*The Lyttelton Times\*](#), 15/10/1866, p 2
- Blue Jacket** (15/06/1867-30/08/1867) in [\*Emigration to Canterbury: shipping lists, 1856-1874\*](#) (microfilm)
- Blundell** (04/05/1848-21/09/1848) in Hocken, T M. [\*Contributions to the early history of New Zealand \(Otago\)\*](#), Appendix F
- Bolivia** (arrived 1842) in Eadie, F. [\*Roll of early settlers and descendants in the Auckland Province prior to the end of 1852\*](#)
- Bollina** (arrived 1842) in Eadie, F. [\*Roll of early settlers and descendants in the Auckland Province prior to the end of 1852\*](#)
- Bolton** (01/11/1839-21/04/1840) in Ward, L. E. [\*Early Wellington\*](#), p 37
- Bolton** (arrived 20/04/1840) in Eadie, F. [\*Roll of early settlers and descendants in the Auckland Province prior to the end of 1852\*](#)
- Bolton** (29/10/1841-15/03/1842) in Neale, J. [\*Pioneer passengers to Nelson by sailing ship, March 1842-June 1843\*](#), p 145
- Bombay** (01/08/1842-14/12/1842) in Neale, J. [\*Pioneer passengers to Nelson by sailing ship, March 1842-June 1843\*](#), p 164
- Bombay** (arrived 1842) in Ward, L. E. [\*Early Wellington\*](#), p 115

**Bombay** (04/05/1866-18/08/1866) in [Emigration to Canterbury: shipping lists, 1856-1874](#) (microfilm)

**Border Maid** (arrived 25/11/1851) in [The Lyttelton Times](#), 29/11/1851, p 4

**Bosworth** (arrived 22/12/1857) in [The Lyttelton Times](#), 23/12/1857, p 4

**Brampton** (arrived 03/08/1823) in Eadie, F. [Roll of early settlers and descendants in the Auckland Province prior to the end of 1852](#)

**Brazil Packet** (arrived 04/12/1834) in Eadie, F. [Roll of early settlers and descendants in the Auckland Province prior to the end of 1852](#)

**Brazil Packet** (arrived 1835) in Eadie, F. [Roll of early settlers and descendants in the Auckland Province prior to the end of 1852](#)

**Brilliant** (arrived 1841) in Eadie, F. [Roll of early settlers and descendants in the Auckland Province prior to the end of 1852](#)

**Bristolian** (arrived 29/05/1842) in Eadie, F. [Roll of early settlers and descendants in the Auckland Province prior to the end of 1852](#)

**British Empire** (28/05/1864) in [The Lyttelton Times](#), 02/08/1864, p 3, 06/09/1864, p 4 and 08/09/1864, p 4

Also in [British Empire gazette](#), Issue 9, 27/08/1864, p 3

**British Queen** (arrived 17/05/1883) in [The Lyttelton Times](#), 18/05/1883, p 4

**British Sovereign** (arrived 05/10/1845) in Eadie, F. [Roll of early settlers and descendants in the Auckland Province prior to the end of 1852](#)

**Bronan** (arrived 1842) in Ward, L. E. [Early Wellington](#), p 115

**Brothers' Pride** (23/07/1863-07/12/1863) in [Emigration to Canterbury: shipping lists, 1856-1874](#) (microfilm)

Also in "Shipping Intelligence", [The Lyttelton Times](#), 8 December 1863, p 4.

Description of arrival and list of immigrants plus a summary of their trades and country of origin .

"Shipping Intelligence", [The Lyttelton Times](#), 10 December 1863, p 4. Account of arrival and list of births, deaths and marriages on board.

[The Lyttelton Times](#), 12 December 1863, p 4. List of births, deaths and marriages on board.

**Brougham** (arrived 1840) in Ward, L. E. [Early Wellington](#), p 74

**Brougham** (arrived 09/02/1842) in Ward, L. E. [Early Wellington](#), p 105

**Buffalo** (arrived 08/1840) in Eadie, F. [Roll of early settlers and descendants in the Auckland Province prior to the end of 1852](#)

**Burmah** (lost at sea) in [The Lyttelton Times](#), 08/02/1860, p 4



**Busephalus** (arrived 1843) in Eadie, F. [Roll of early settlers and descendants in the Auckland Province prior to the end of 1852](#)

**Byron** (arrived 12/04/1833) in Eadie, F. [Roll of early settlers and descendants in the Auckland Province prior to the end of 1852](#)

**Cachelot** (arrived 1840) in Eadie, F. [Roll of early settlers and descendants in the Auckland Province prior to the end of 1852](#)

**Cacique** (arrived 20/08/1851) in [The Lyttelton Times](#), 23/08/1851, p 4

**Caernarvon** (arrived 1834) in Eadie, F. [Roll of early settlers and descendants in the Auckland Province prior to the end of 1852](#)

**Caledonia** (arrived 01/01/1854) in [The Lyttelton Times](#), 07/01/1854, p 6

**Caledonia** (arrived 03/05/1854) in [The Lyttelton Times](#), 06/05/1854, p 6

**Caledonia** (arrived 22/05/1854) in [The Lyttelton Times](#), 27/05/1854, p 6

**Calliope, HMS** (arrived 18/01/1845) in Eadie, F. [Roll of early settlers and descendants in the Auckland Province prior to the end of 1852](#)

**Cameo** (01/03/1859-11/07/1859) in [Emigration to Canterbury: shipping lists, 1856-1874](#) (microfilm) Also in [The Lyttelton Times](#), 04/06/1859, p 4 and 13/07/1859, p 4

**Camilla** (arrived 29/10/1851) in [The Lyttelton Times](#), 01/11/1851, p 4

**Camilla** (arrived 17/01/1852) in [The Lyttelton Times](#), 24/01/1852, p 4

**Camilla** (arrived 16/10/1852) in Rutherford, J. & Skinner, W. H. [The establishment of the New Plymouth settlement in New Zealand, 1841-1843](#), Chapter 14

**Camilla** (arrived 20/08/1855) in [The Lyttelton Times](#), 22/08/1855, p 5

**Canterbury** (arrived 19/08/1851) in Eadie, F. [Roll of early settlers and descendants in the Auckland Province prior to the end of 1852](#)

**Canterbury** (21/06/1851-21/10/1851) in [Canterbury jubilee celebrations : Old Colonists' Committee... passenger lists of Canterbury Association ships](#)  
Also in [The Lyttelton Times](#), 25/10/1851, p 5

**Canterbury** (arrived 10/05/1856) in [The Lyttelton Times](#), 14/05/1856, p 6

**Canterbury** (arrived 16/06/1856) in [The Lyttelton Times](#), 20/06/1856, p 4

**Canterbury** (arrived 19/09/1856) in [The Lyttelton Times](#), 24/09/1856, p 6

**Canterbury** (arrived 13/11/1856) in [The Lyttelton Times](#), 15/11/1856, p 6

**Canterbury** (arrived 01/12/1856) in [The Lyttelton Times](#), 03/12/1856, p 7

**Canterbury** (arrived 26/12/1856) in [The Lyttelton Times](#), 27/12/1856, p 4

- Canterbury (arrived 01/02/1857) in [The Lyttelton Times](#), 04/02/1857, p 8
- Canterbury (arrived 02/03/1857) in [The Lyttelton Times](#), 04/03/1857, p 6
- Canterbury (arrived 08/04/1857) in [The Lyttelton Times](#), 11/04/1857, p 6
- Canterbury (arrived 01/05/1857) in [The Lyttelton Times](#), 06/05/1857, p 7
- Canterbury (arrived 27/05/1857) in [The Lyttelton Times](#), 30/05/1857, p 7
- Canterbury (arrived 01/07/1857) in [The Lyttelton Times](#), 04/07/1857, p 4
- Canterbury (arrived 23/07/1857) in [The Lyttelton Times](#), 25/07/1857, p 4
- Canterbury (arrived 19/08/1857) in [The Lyttelton Times](#), 22/08/1857, p 4
- Canterbury (arrived 21/09/1857) in [The Lyttelton Times](#), 23/09/1857, p 5
- Canterbury (arrived 06/11/1857) in [The Lyttelton Times](#), 07/11/1857, p 4
- Canterbury (arrived 04/12/1857) in [The Lyttelton Times](#), 09/12/1857, p 4
- Canterbury (arrived 10/01/1858) in [The Lyttelton Times](#), 13/01/1858, p 4
- Canterbury (arrived 07/02/1858) in [The Lyttelton Times](#), 10/02/1858, p 4
- Canterbury (arrived 21/02/1858) in [The Lyttelton Times](#), 24/02/1858, p 4
- Canterbury (arrived 18/03/1858) in [The Lyttelton Times](#), 20/03/1858, p 4
- Canterbury (arrived 03/04/1858) in [The Lyttelton Times](#), 07/04/1858, p 5
- Canterbury (arrived 09/06/1858) in [The Lyttelton Times](#), 12/06/1858, p 4
- Canterbury (arrived 22/09/1858) in [The Lyttelton Times](#), 25/09/1858, p 4
- Canterbury (arrived 12/10/1858) in [The Lyttelton Times](#), 13/10/1858, p 4
- Canterbury (arrived 20/11/1858) in [The Lyttelton Times](#), 24/11/1858, p 4
- Canterbury (arrived 28/12/1858) in [The Lyttelton Times](#), 29/12/1858, p 7
- Canterbury (21/09/1863-10/01/1864) in [Emigration to Canterbury: shipping lists, 1856-1874](#) (microfilm)  
Also in [The Lyttelton Times](#), 12/01/1864, p 4
- Canterbury (arrived 18/06/1865) in [The Lyttelton Times](#), 20/06/1865, p 4
- Canterbury (arrived 02/09/1874) in [The Lyttelton Times](#), 03/09/1874, p 2  
Cabin passengers listed. No Government immigrants listed. An account of the voyage.
- Canute (09/12/1866-07/04/1867) in [The Lyttelton Times](#), 08/04/1867, p 4

**Captain Cook** (arrived 05/09/1863) in [The Lyttelton Times](#), 05/09/1863, p 5  
Because the ship was placed in quarantine on arrival, no list of passengers is given. A letter appears signed by some of the first, second and steerage passengers.

**Carbon** (arrived 23/11/1846) in Rutherford, J. & Skinner, W. H. [The establishment of the New Plymouth settlement in New Zealand, 1841-1843](#), Chapter 14

**Cardigan Castle** (arrived 15/11/1873) in [The Lyttelton Times](#), 17/11/1873, p 2

**Carisbrooke Castle** (arrived 03/09/1874) in [The Lyttelton Times](#), 3/09/1874, p 2. No Government immigrants listed. An account of the voyage.

**Carnarvon** (arrived 1834) in Eadie, F. [Roll of early settlers and descendants in the Auckland Province prior to the end of 1852](#)

**Carnatic** (arrived 29/12/1853) in [The Lyttelton Times](#), 31/12/1853, p 6

**Carnatic** (arrived 13/04/1877) in [The Lyttelton Times](#), 14/04/1877, p 2

**Caroline Coventry** (25/02/1869-08/06/1869) in [Emigration to Canterbury: shipping lists, 1856-1874 \(digital version\)](#)

Also in "Shipping". [The Lyttelton Times](#), 9 June 1869, p 2. Cabin passengers listed plus account of voyage. List of Government immigrants and summary of their trades. [The Lyttelton Times](#), 10 June 1869, p 2. Arrival described. Captain's report plus testimonials presented to him and also to the matron from passengers

**Cashmere** (arrived 10/10/1851) in Eadie, F. [Roll of early settlers and descendants in the Auckland Province prior to the end of 1852](#)

**Cashmere** (arrived 30/11/1851) in Rutherford, J. & Skinner, W. H. [The establishment of the New Plymouth settlement in New Zealand, 1841-1843](#), Chapter

**Cashmere** (arrived 1852) in Ward, L. E. [Early Wellington](#), p 160

**Cashmere** (arrived 06/08/1854) in Rutherford, J. & Skinner, W. H. [The establishment of the New Plymouth settlement in New Zealand, 1841-1843](#), Chapter 14

**Cashmere** (arrived 23/10/1855) in [The Lyttelton Times](#), 24/10/1855, p 4 and 27/10/1855, p 6

**Cashmere** (arrived 24/11/1855) in Rutherford, J. & Skinner, W. H. [The establishment of the New Plymouth settlement in New Zealand, 1841-1843](#), Chapter 14

**Cashmere** (arrived 05/04/1857) in Rutherford, J. & Skinner, W. H. [The establishment of the New Plymouth settlement in New Zealand, 1841-1843](#), Chapter 14

**Cashmere** (16/06/1859-11/10/1859) in [Emigration to Canterbury: shipping lists, 1856-1874 \(digital version\)](#)

Also in [The Lyttelton Times](#), 10 September 1859, p 4. Chief cabin (passengers for Canterbury and Otago), second cabin and steerage passengers listed. Government immigrants listed and analysis of their trades.

[The Lyttelton Times](#), 12 October 1859, p 4. Chief cabin (passengers for Canterbury

and Otago), second cabin and steerage passengers (Canterbury and Otago) listed. Government immigrants listed and analysis of their trades. Births and deaths on board.

**Cashmere** (arrived 14/02/1861) in [The Lyttelton Times](#), 16/02/1861, p 4

**Castle Eden** (08/10/1850-07/02/1851) in [Canterbury jubilee celebrations : Old Colonists' Committee... passenger lists of Canterbury Association ships](#)  
Also in Z Arch 361, [A list of passengers landed at New Zealand from the ship Castle Eden, 1851](#)

**Catherine** (arrived 07/09/1863) in [The Lyttelton Times](#), 09/09/1863, p 4

**Catherine Ann** (arrived 16/08/1854) in [The Lyttelton Times](#), 19/08/1854, p 7

**Catherine Stewart Forbes** (01/02/1841-06/1841) in Ward, L .E. [Early Wellington](#), p 91

**Catherine Stewart Forbes** (arrived 24/06/1841) in Eadie, F. [Roll of early settlers and descendants in the Auckland Province prior to the end of 1852](#)

**Celoeno** (arrived 16/01/1870) in [The Lyttelton Times](#), 17/01/1870, p 2

**Chapman** (arrived 12/09/1860) in [The Lyttelton Times](#), 15/09/1860, p 4 Saloon passengers, second cabin and steerage passengers listed.

**Chariot of Fame** (21/10/1862-28/01/1863) in [Emigration to Canterbury: shipping lists, 1856-1874 \(digital version\)](#)  
Also in [The Press](#), 31 January 1863, p 6 and 4 February 1863, p 1 and [The Lyttelton Times](#), 31 January 1863, p 4. Cabin passengers listed. Account of arrival and voyage followed by list of government immigrants.  
See also "They came out on the Chariot of Fame", [The Press](#), 1 February 1997, p 12

**Charlotte Gladstone** (05/11/1870-30/01/1871) in [Emigration to Canterbury: shipping lists, 1856-1874 \(digital version\)](#)  
Also in [The Lyttelton Times](#), 30 January 1871, p 2. Saloon passengers listed.  
[The Lyttelton Times](#), 31 January 1871, p 2. Cabin , second cabin and steerage passengers listed. Arrival of ship and captain's report. Testimonials presented to Capt. Fox and the surgeon-superintendent, W. R. Cortes, from the passengers.

**Charlotte Gladstone** (arrived 02/02/1872) in [The Lyttelton Times](#), 03/02/1872, p 2

**Charlotte Jane** (07/09/1850-16/12/1850) in [Canterbury jubilee celebrations : Old Colonists' Committee... passenger lists of Canterbury Association ships](#)  
Also in [The Lyttelton Times](#), 18/01/1851, p 6

**Chelydra** (arrived 07/1840) in Eadie, F. [Roll of early settlers and descendants in the Auckland Province prior to the end of 1852](#)

**Cheviot** (arrived 1836) in Eadie, F. [Roll of early settlers and descendants in the Auckland Province prior to the end of 1852](#)

**Chrysolite** (arrived 27/07/1861) in [The Lyttelton Times](#), 31/07/1861, p 4. Chief cabin, second cabin and steerage passengers listed plus provincial government immigrants.

Description of voyage. Testimonial presented to captain by passengers and his thanks in reply.

Also in [The Lyttelton Times](#), 24 July 1861, p 4. List of provincial government immigrants and an analysis of their trades.

**Chrysolite** (05/08/1862-24/11/1862) in [Emigration to Canterbury: shipping lists, 1856-1874 \(digital version\)](#).

Also in “Shipping Intelligence”, [The Lyttelton Times](#), 26 Nov. 1862, p 4. Account of arrival and voyage. List of provincial and government immigrants. Analysis of their country of origin and trades.

**Chrysolite** (arrived 27/07/1863) in [The Press](#), 03/08/1863, p 5

**Cicely** (arrived 24/02/1852) in [The Lyttelton Times](#), 28/02/1852, p 5

**Cicero** (arrived 18/05/1875) in [The Lyttelton Times](#), 20/05/1875, p 2

**Cissy** (arrived 24/03/1866) in [The Lyttelton Times](#), 26/03/1866, p 2

**City of Dublin** (arrived 04/08/1876) in [The Lyttelton Times](#), 05/08/1876, p 2

**City of Dunedin** (arrived 01/07/1876) in [The Lyttelton Times](#), 03/07/1876, p 2

**City of London** (arrived 1843) in Ward, L .E. [Early Wellington](#), p 117

**City of Quebec** (arrived 05/03/1879) in [The Lyttelton Times](#), 06/03/1879, p 4

**Clara** (arrived 09/1848) in Eadie, F. [Roll of early settlers and descendants in the Auckland Province prior to the end of 1852](#)

**Clara** (arrived 1850) in Ward, L. E. [Early Wellington](#), p 154

**Clara** (arrived 03/11/1851) in [The Lyttelton Times](#), 08/11/1851, p 4

**Clifford** (18/12/1841-11/05/1842) in Neale, J. [Pioneer passengers to Nelson by sailing ship, March 1842-June 1843](#), p 152

**Clifford** (arrived 1841) in Ward, L. E. [Early Wellington](#), p 110

**Clifton** (arrived 1841) in Ward, L. E. [Early Wellington](#), p 110

**Clifton** (arrived 23/01/1842) in Eadie, F. [Roll of early settlers and descendants in the Auckland Province prior to the end of 1852](#)

**Clifton** (arrived 23/01/1848) in Eadie, F. [Roll of early settlers and descendants in the Auckland Province prior to the end of 1852](#)

**Clontarf** (arrived 05/01/1859) in [The Lyttelton Times](#), 08/01/1859, p 4

**Clontarf** (25/11/1859-16/03/1860) in [Emigration to Canterbury: shipping lists, 1856-1874 \(digital version\)](#)

Also in “Shipping News”, [The Lyttelton Times](#), 14 Mar. 1860, p 4. Chief cabin, second cabin and steerage passengers listed. Also list of provincial government immigrants and an analysis of their trades. Note it is published in newspaper prior to

arrival of ship.

“Shipping News”, [The Lyttelton Times](#), 17 Mar. 1860, p 4. Chief cabin, second cabin and steerage passengers listed. Account of voyage and testimonial present to Capt. Barclay from the passengers. Provincial government immigrants listed. Analysis.

**Clutha** (arrived 19/03/1854) in [The Lyttelton Times](#), 25/03/1854, p 6

**Clyde** (arrived 1835) in Eadie, F. [Roll of early settlers and descendants in the Auckland Province prior to the end of 1852](#)

**Clydeside** (arrived 1841) in Ward, L. E. [Early Wellington](#), p 110

**Coila** (arrived 05/11/1855) in [The Lyttelton Times](#), 07/11/1855, p 5

**Coila** (arrived 30/04/1856) in [The Lyttelton Times](#), 03/05/1856, p 6

**Coila** (arrived 09/09/1856) in [The Lyttelton Times](#), 10/09/1856, p 6

**Colchester** (arrived 23/07/1855) in [The Lyttelton Times](#), 25/07/1855, p 5

**Columbus** (arrived 19/01/1852) in [Canterbury jubilee celebrations : Old Colonists' Committee... passenger lists of Canterbury Association ships](#). Also in [The Lyttelton Times](#), 24/01/1852, p 4

**Columbus** (arrived 02/09/1873) in [The Lyttelton Times](#), 03/09/1873, p 2

**Columbus** (arrived 02/09/1873) in Walsh, G. W. [Our family](#), p 6

**Columbus** (arrived 15/07/1878) in [The Lyttelton Times](#), 16/07/1878, p 2

**Comet** (arrived 1848) in Ward, L. E. [Early Wellington](#), p 151

**Comet** (arrived 05/10/1852) in [The Lyttelton Times](#), 09/10/1852, p 6

**Comet** (arrived 26/05/1857) in [The Lyttelton Times](#), 27/05/1857, p 6

**Comet** (arrived 08/05/1858) in [The Lyttelton Times](#), 12/05/1858, p 4

**Content** (arrived 07/12/1855) in [The Lyttelton Times](#), 08/12/1855, p 6

**Content** (arrived 27/03/1856) in [The Lyttelton Times](#), 29/03/1856, p 5

**Content** (arrived 12/04/1858) in [The Lyttelton Times](#), 14/04/1858, p 4

**Coptic** (arrived 04/12/1884) in [The Lyttelton Times](#), 5/12/1884, p 4

**Coquette** (arrived 12/10/1847) in Eadie, F. [Roll of early settlers and descendants in the Auckland Province prior to the end of 1852](#)

**Coquille** (arrived 04/1824) in Eadie, F. [Roll of early settlers and descendants in the Auckland Province prior to the end of 1852](#)

**Coriolanus** (arrived 06/04/1879) in [The Lyttelton Times](#), 07/04/1879, p 4

**Cornubia** (arrived 03/06/1855) in [The Lyttelton Times](#), 06/06/1855, p 5

- Cornubia** (arrived 14/10/1857) in [The Lyttelton Times](#), 17/10/1857, p 5
- Cornwall** (19/04/1849-18/08/1849) in Rutherford, J. & Skinner, W. H. [The establishment of the New Plymouth settlement in New Zealand, 1841-1843](#), Chapter
- Cornwall** (20/04/1849-23/09/1849) in Hocken, T M., [Contributions to the early history of New Zealand \(Otago\)](#), Appendix F
- Cornwall** (12/08/1851-10/12/1851) in [Canterbury jubilee celebrations : Old Colonists' Committee... passenger lists of Canterbury Association ships](#)  
Also in [The Lyttelton Times](#), 13/12/1851, p 5
- Cornwall** (arrived 1852) in Ward, L. E. [Early Wellington](#), p 160
- Coromandel** (arrived 1836) in Eadie, F. [Roll of early settlers and descendants in the Auckland Province prior to the end of 1852](#)
- Coromandel** (arrived 1838) in Eadie, F. [Roll of early settlers and descendants in the Auckland Province prior to the end of 1852](#)
- Coromandel** (arrived 28/06/1878) in [The Lyttelton Times](#), 29/06/1878, p 4
- Coronilla** (10/04/1871-10/08/1871) in [The Lyttelton Times](#), 11/08/1871, p 2
- Corsair** (arrived 21/12/1857) in [The Lyttelton Times](#), 23/12/1857, p 4
- Corsair** (arrived 13/03/1858) in [The Lyttelton Times](#), 17/10/1858, p 4
- Cossipore** (arrived 31/08/1857) in [The Lyttelton Times](#), 02/09/1857, p 5
- Cossipore** (arrived 08/08/1864) in [The Lyttelton Times](#), 11/08/1864, p 3
- Countess of Kintore** (arrived 29/04/1876) in [The Lyttelton Times](#), 01/05/1876, p 2
- Cresswell** (arrived 20/03/1851) in Eadie, F. [Roll of early settlers and descendants in the Auckland Province prior to the end of 1852](#)
- Cresswell** (arrived 30/06/1852) in Eadie, F. [Roll of early settlers and descendants in the Auckland Province prior to the end of 1852](#)
- Cresswell** (arrived 25/08/1853) in Rutherford, J. & Skinner, W. H. [The establishment of the New Plymouth settlement in New Zealand, 1841-1843](#), Chapter 14
- Cresswell** (arrived 03/06/1855) in Rutherford, J. & Skinner, W. H. [The establishment of the New Plymouth settlement in New Zealand, 1841-1843](#), Chapter 14
- Cresswell** arrived 12/09/1859) in [The Lyttelton Times](#), 14/09/1859, p 4  
Also [The Lyttelton Times](#), 10/09/1859, p 4. Passengers to Nelson listed.
- Cressy** (08/09/1850-27/12/1850) in [Canterbury jubilee celebrations : Old Colonists' Committee... passenger lists of Canterbury Association ships](#)
- Crusader** (17/12/1870-13/03/1871) in [The Lyttelton Times](#), 14/03/1871, p 2

**Crusader** (arrived 05/01/1873) in [The Lyttelton Times](#), “Shipping”, 06/01/1873, p 2  
List of saloon and steerage passengers. The 174 immigrant passengers are not named.  
Account of voyage and arrival, also Capt. Sutherland’s report and a testimonial from  
the passengers for him.

**Crusader** ( 01/02/1874) in [The Lyttelton Times](#), 02/02/1874, p 2

**Crusader** (arrived 31/12/1874) in [The Lyttelton Times](#), 01/01/1875, p 2

**Crusader** (arrived 08/02/1876) in [The Lyttelton Times](#), 09/02/1876, p 2

**Crusader** (17/10/1876-13/01/1877) in [The Lyttelton Times](#), 15/01/1877, p 2

**Crusader** (arrived 11/10/1878) in [The Lyttelton Times](#), 12/10/1878, p 4  
Also *The Press*, 12/10/1878, p 4

**Crusader** (21/06/1879-24/09-1879) in [The Lyttelton Times](#), 25/09/1879, p 4  
[The clipper ship Crusader, built in 1865, broken up in 1910 : memories and records  
of over fifty years’ pioneering: with special reference to voyages 1874-1879](#), pp 3639

**Crusader** (arrived 22/03/1883) in [The Lyttelton Times](#), 24/03/1883, p 4

**Dagmar** (10/01/1869-21/05/1869) in *The Press*, 22/05/1869, p 2

**Daniel Webster** 19/09/1855-05/10/1855) in [The Lyttelton Times](#), 06/10/1855, p 4

**Daniel Webster** (arrived 03/01/1856) in [The Lyttelton Times](#), 05/01/1856, p 4

**Daniel Webster** (arrived 13/04/1856) in [The Lyttelton Times](#), 16/08/1856, p 6

**Dart** (arrived 20/06/1856) in [The Lyttelton Times](#), 25/06/1856, p 6

**Dart** (arrived 03/12/1856) in [The Lyttelton Times](#), 06/12/1856, p 5

**Dart** (arrived 23/02/1857) in [The Lyttelton Times](#), 25/02/1857, p 6

**Dart** (arrived 25/05/1857) in [The Lyttelton Times](#), 27/05/1857, p 6

**Dart** (arrived 01/08/1857) in [The Lyttelton Times](#), 05/08/1857, p 4

**Dart** (arrived 22/10/1857) in [The Lyttelton Times](#), 24/10/1857, p 4

**Dart** (arrived 09/01/1858) in [The Lyttelton Times](#), 13/01/1858, p 4

**Dart** (arrived 29/03/1858) in [The Lyttelton Times](#), 31/03/1858, p 4

**Dart** (arrived 25/07/1858) in [The Lyttelton Times](#), 28/07/1858, p 5

**Dart** (arrived 05/10/1858) in [The Lyttelton Times](#), 09/10/1858, p 4

**Dart** (arrived 13/12/1858) in [The Lyttelton Times](#), 15/12/1858, p 4

**David** (arrived 1840) in Ward, L. E. [Early Wellington](#), p 74



**David G Fleming** (23/08/1863-09/12/1863) in [Emigration to Canterbury: shipping lists, 1856-1874 \(digital version\)](#)

Also in “Shipping intelligence”, [The Lyttelton Times](#), 10 December 1863, p 4. Cabin passengers listed. Account of voyage. Immigrants listed followed by an analysis of their trades and nationality

“Summary of shipping news”, [The Lyttelton Times](#), 12 December 1863, p 4. Account of arrival and details of voyage. “The man from Galway, recollections of Mr Thomas O’Connell”, [The Star](#), 7 October 1919, p 6

**Deborah** (arrived 1826) in Eadie, F. [Roll of early settlers and descendants in the Auckland Province prior to the end of 1852](#)

**Delhi** (arrived 17/03/1840) in Eadie, F. [Roll of early settlers and descendants in the Auckland Province prior to the end of 1852](#)

**Delhi** (arrived 1840) in Ward, L. E. [Early Wellington](#), p 74

**Derwent** (arrived 23/07/1851) in [The Lyttelton Times](#), 26/07/1851, p 4

**Desdemona** (arrived 06/06/1876) in [The Lyttelton Times](#), 08/06/1876, p 2

**Despatch** (arrived 29/12/1851) in [The Lyttelton Times](#), 03/01/1852, p 4

**Despatch** (arrived 08/02/1852) in [The Lyttelton Times](#), 14/02/1852, p 4

**Despatch** (arrived 13/05/1852) in [The Lyttelton Times](#), 15/05/1852, p 4

**Despatch** (arrived 20/03/1853) in [The Lyttelton Times](#), 26/03/1853, p 6

**Despatch** (arrived 03/05/1853) in [The Lyttelton Times](#), 07/05/1853, p 6

**Despatch** (arrived 08/09/1853) in [The Lyttelton Times](#), 10/09/1853, p 6

**Despatch** (arrived 10/01/1854) in [The Lyttelton Times](#), 14/01/1854, p 6

**Despatch** (arrived 13/06/1854) in [The Lyttelton Times](#), 17/06/1854, p 6

**Despatch** (arrived 27/06/1854) in [The Lyttelton Times](#), 01/07/1854, p 6

**Despatch** (arrived 08/01/1855) in [The Lyttelton Times](#), 08/01/1855, p 4

**Devonshire** (arrived 22/10/1864) in [The Lyttelton Times](#), 25/10/1864, p 4

**Diana** (arrived 08/1838) in Eadie, F. [Roll of early settlers and descendants in the Auckland Province prior to the end of 1852](#)

**Dido** (arrived 1848) in Ward, L. E. [Early Wellington](#), p 151

**Dilharree** (arrived 11/03/1874) in [The Lyttelton Times](#), 12/03/1874, p 2

**Dinapore** (arrived 10/10/1857) in Rutherford, J. & Skinner, W. H. [The establishment of the New Plymouth settlement in New Zealand, 1841-1843](#), Chapter 14

**Dolphin** (arrived 05/12/1854) in [The Lyttelton Times](#), 06/12/1854, p 5

- Dominion** (08/05/1851-28/08/1851) in [Canterbury jubilee celebrations : Old Colonists' Committee... passenger lists of Canterbury Association ships](#)
- Don Juan** (arrived 25/11/1851) in [The Lyttelton Times](#), 29/11/1851, p 4
- Dona Anita** (arrived 15/07/1863) in [The Press](#), 16/07/1863, p 4
- Dona Anita** (arrived 01/01/1865) in [The Lyttelton Times](#), 03/01/1865, p 4
- Doric** (arrived 28/09/1883) in [The Lyttelton Times](#), 03/10/1883, p 2f
- Dover Castle** (19/01/1872-07/05/1872) in [Emigration to Canterbury: shipping lists, 1856-1874 \(digital version\)](#)  
Also in "Shipping", [The Lyttelton Times](#), 8 May 1872, p 2. Cabin passengers listed. Arrival described.  
"Shipping", [The Lyttelton Times](#), 9 May 1872, p 2. Cabin passengers listed. Account of voyage.
- Draco** (arrived 04/11/1837) in Eadie, F. [Roll of early settlers and descendants in the Auckland Province prior to the end of 1852](#)
- Driver, HMS** (arrived 1846) in Eadie, F. [Roll of early settlers and descendants in the Auckland Province prior to the end of 1852](#)
- Duchess of Argyle** (arrived 09/10/1842) in Eadie, F. [Roll of early settlers and descendants in the Auckland Province prior to the end of 1852](#)
- Duke of Argyle** (22/02/1878-09/06/1878) in [The Lyttelton Times](#), 10/06/1878, p 2
- Duke of Bronte** (10/01/1851-06/06/1851) in [Canterbury jubilee celebrations : Old Colonists' Committee... passenger lists of Canterbury Association ships](#)  
Also in [The Lyttelton Times](#), 21/06/1851, p 3
- Duke of Edinburgh** (arrived 01/11/1874) in [The Lyttelton Times](#), 02/11/1874, p 2
- Duke of Edinburgh** (arrived 17/11/1875) in [The Lyttelton Times](#), 19/11/1875, p 2
- Duke of Portland** (18/06/1851-26/09/1851) in [Canterbury jubilee celebrations : Old Colonists' Committee... passenger lists of Canterbury Association ships](#)
- Duke of Portland** (16/06/1852-21/10/1852) in [Canterbury jubilee celebrations : Old Colonists' Committee... passenger lists of Canterbury Association ships](#) . Also in [The Lyttelton Times](#), 23/10/1852, p 6
- Duke of Portland** (arrived 27/03/1854) in [The Lyttelton Times](#), 01/04/1854, p 6
- Duke of Portland** (arrived 19/08/1855) in Rutherford, J. & Skinner, W. H. [The establishment of the New Plymouth settlement in New Zealand, 1841-1843](#), Chapter 14
- Duke of Roxburgh** (05/10/1839-08/02/1840) in Ward, L. E. [Early Wellington](#), p 27
- Duke of Wellington** (arrived 11/05/1855) in [The Lyttelton Times](#), 12/05/1855, p 4

- Durham** (20/09/1880-18/11/1880) in [The Lyttelton Times](#), 19/11/1880, p 4
- Eagle** (arrived 03/01/1854) in [The Lyttelton Times](#), 07/01/1854, p 6
- Eagle** (arrived 21/05/1854) in [The Lyttelton Times](#), 27/05/1854, p 6
- Eagle** (arrived 09/06/1854) in [The Lyttelton Times](#), 10/06/1854, p 6
- Eagle** (arrived 06/07/1854) in [The Lyttelton Times](#), 08/07/1854, p 6
- Earl of Durham** (arrived 1839) in Eadie, F. [Roll of early settlers and descendants in the Auckland Province prior to the end of 1852](#)
- Earl Stanhope** (arrived 1841) in Ward, L. E. [Early Wellington](#), p 9
- Eastern Empire** (30/08/1864-04/01/1865) in [The Lyttelton Times](#), 24/11/1864, p 4 and [The Press](#), 25/11/1864, p 2
- Eastern Monarch** (arrived 24/07/1874) in [Eastern Monarch anniversary, 24 July 1874-30 July 1924, Z Arch 364](#)  
Also in [The Press](#), 24/07/1874, p 2  
and [The Lyttelton Times](#), 24/07/1874, p 2
- Echunga** (arrived 22/12/1862) in “Shipping intelligence”, [The Lyttelton Times](#), 24/12/1862, p 4. List of passengers: 1st cabin and steerage. Description of voyage, birth and deaths during voyage, followed by a list of Provincial Government Immigrants.
- Eclair** (arrived 03/02/1857) in [The Lyttelton Times](#), 04/02/1857, p 8
- Eclair** (arrived 05/03/1857) in [The Lyttelton Times](#), 07/03/1857, p 6
- Eclair** (arrived 11/09/1857) in [The Lyttelton Times](#), 12/09/1857, p 5
- Eclipse** (arrived 17/06/1854) in Rutherford, J. & Skinner, W. H. [The establishment of the New Plymouth settlement in New Zealand, 1841-1843](#), Chapter 14
- Eclipse** (arrived 04/03/1859) in Rutherford, J. & Skinner, W. H. [The establishment of the New Plymouth settlement in New Zealand, 1841-1843](#), Chapter 14
- Eden** (03/06/1850-27/12/1850) in Hocken, T M., [Contributions to the early history of New Zealand \(Otago\)](#), Appendix F
- Eden** (arrived 29/10/1850) in Rutherford, J. & Skinner, W. H. [The establishment of the New Plymouth settlement in New Zealand, 1841-1843](#), Chapter 14
- Edward P Bouverie** (arrived 25/11/1874) in [The Lyttelton Times](#), 26/11/1874, p 2
- Edwin Fox** (arrived 04/05/1880) in [The Lyttelton Times](#), 04/05/1880, p 4
- Edwin Fox** (07/01/1880-03/05/1880) in [The Lyttelton Times](#), 04/05/1880, p 4
- Egmont** (arrived 06/11/1855) in Rutherford, J. & Skinner, W. H. [The](#), Chapter 14

**Egmont** (11/09/1856-23/12/1856) in [Emigration to Canterbury: shipping lists, 1856-1874 \(digital version\)](#)

Also in “Shipping News”, [The Lyttelton Times](#), 24 December 1856, p 7. Cabin and steerage passengers listed plus a summary of their nationalities. Deaths on board. Account of the voyage.

**Egmont** (arrived 07/07/1862) in [The Lyttelton Times](#), 09/07/1862, p 4

**Elbe** (arrived 1841) in Ward, L. E. [Early Wellington](#), p 110

**Eleanor** (arrived 1841) in Ward, L. E. [Early Wellington](#), p 110

**Eliza** (arrived 18/02/1854) in [The Lyttelton Times](#), 25/02/1854, p 6

**Eliezer** (arrived 18/11/1857) in [The Lyttelton Times](#), 21/11/1857, p 4

**Elizabeth** (arrived 1841) in Eadie, F. [Roll of early settlers and descendants in the Auckland Province prior to the end of 1852](#)

**Elizabeth** (arrived 07/06/1858) in [The Lyttelton Times](#), 09/06/1858, p 4

**Ellen** (arrived 07/11/1858) in [The Lyttelton Times](#), 10/11/1858, p 6

**Ellen Lewis** (arrived 1845) in Eadie, F. [Roll of early settlers and descendants in the Auckland Province prior to the end of 1852](#)

**Elora** (arrived 30/01/1847) in Rutherford, J. & Skinner, W. H., [The establishment of the New Plymouth settlement in New Zealand, 1841-1843](#), Chapter 14

**Elora** (arrived 07/03/1847) in Eadie, F. [Roll of early settlers and descendants in the Auckland Province prior to the end of 1852](#)

**Elora** (arrived 1848) in Eadie, F. [Roll of early settlers and descendants in the Auckland Province prior to the end of 1852](#)

**Elphinstone** (arrived 14/11/1845) in Eadie, F. [Roll of early settlers and descendants in the Auckland Province prior to the end of 1852](#)

**Emerald** (arrived 13/11/1855) in [The Lyttelton Times](#), 14/11/1855, p 4

**Emerald** (arrived 29/06/1856) in [The Lyttelton Times](#), 02/07/1856, p 6

**Emerald** (arrived 12/06/1858) in [The Lyttelton Times](#), 16/06/1858, p 4

**Emma** (arrived 10/12/1847) in Eadie, F. [Roll of early settlers and descendants in the Auckland Province prior to the end of 1852](#)

**Emu** (arrived 20/08/1856) in [The Lyttelton Times](#), 20/08/1856, p 4

**Emu** (arrived 07/10/1856) in [The Lyttelton Times](#), 16/06/1858, p 4

**Emu** (arrived 06/11/1856) in [The Lyttelton Times](#), 08/11/1856, p 6

**Endeavour** (arrived 24/07/1824) in Eadie, F. [Roll of early settlers and descendants in the Auckland Province prior to the end of 1852](#)

**Endeavour** (arrived 06/08/1853) in [The Lyttelton Times](#), 13/08/1853, p 7

**Epsom** (arrived 09/08/1863) in [The Lyttelton Times](#), 11/08/1863, p 2

**Esperanza** (arrived 1838) in Eadie, F. [Roll of early settlers and descendants in the Auckland Province prior to the end of 1852](#)

**Essex** (arrived 23/01/1842) in Eadie, F. [Roll of early settlers and descendants in the Auckland Province prior to the end of 1852](#)

**Essex** (arrived 1842) in Ward, L. E. [Early Wellington](#), p 115

**Essex** (03/09/1842-20/01/1843) in Rutherford, J. & Skinner, W. H. [The establishment of the New Plymouth settlement in New Zealand, 1841-1843](#), Chapter 14

**Esther** (arrived 1842) in Ward, L. E. [Early Wellington](#), p 115

**Euterpe** (arrived 11/04/1876) in [The Lyttelton Times](#), 12/04/1876, p 2

**Euterpe** (02/08/1879-24/12/1879) in [The Lyttelton Times](#), 26/12/1879, p 4

**Evening Star** (01/01/1863-13/04/1863) in *The Press*, 14/04/1863, p 3

**Excellent** (arrived 5/02/1863) in [The Lyttelton Times](#), 7/02/1863

**Exchange** (arrived 20/01/1853) in [The Lyttelton Times](#), 22/01/1853, p 6

**Explorer** (arrived 1842) in Ward, L. E. [Early Wellington](#), p 115

**Exporter** (arrived 1840) in Eadie, F. [Roll of early settlers and descendants in the Auckland Province prior to the end of 1852](#)

**Exporter** (arrived 08/11/1841) in Eadie, F. [Roll of early settlers and descendants in the Auckland Province prior to the end of 1852](#)

**Exporter** (arrived 1842) in Ward, L. E. [Early Wellington](#), p 115

**Fair Tasmanian** (arrived 08/09/1851) in [The Lyttelton Times](#), 13/09/1851, p 4

**Fair Tasmanian** (arrived 29/12/1851) in [The Lyttelton Times](#), 03/01/1852, p 4

**Fairy** (arrived 10/12/1853) in [The Lyttelton Times](#), 17/12/1853, p 6

**Falcon** (arrived 1840) in Eadie, F. [Roll of early settlers and descendants in the Auckland Province prior to the end of 1852](#)

**Fanny Fisher** (arrived 1848) in Ward, L. E. [Early Wellington](#), p 151

**Fatima** (10/09/1851-27/12/1851) in [Canterbury jubilee celebrations : Old Colonists' Committee... passenger lists of Canterbury Association ships](#)  
Also in [The Lyttelton Times](#), 03/01/1852, p 4

**Fatima** (arrived 17/02/1852) in Rutherford, J. & Skinner, W. H. [\*The establishment of the New Plymouth settlement in New Zealand, 1841-1843\*](#), Chapter 14

**Favourite** (arrived 24/08/1856) in [\*The Lyttelton Times\*](#), 27/08/1856, p 4

**Federation** (arrived 04/09/1858) in [\*The Lyttelton Times\*](#), 08/09/1858, p 4

**Fido, HMS** (arrived 27/10/1847) in Eadie, F. [\*Roll of early settlers and descendants in the Auckland Province prior to the end of 1852\*](#)

**Fifeshire** (arrived 19/01/1842) in Eadie, F. [\*Roll of early settlers and descendants in the Auckland Province prior to the end of 1852\*](#)

**Fifeshire** (arrived 1842) in Ward, L. E. [\*Early Wellington\*](#), p 115

**Fifeshire** (departed 26/09/1841) in Neale, J. [\*Pioneer passengers to Nelson by sailing ship, March 1842-June 1843\*](#), p 126

**Firefly** (arrived 1848) in Eadie, F. [\*Roll of early settlers and descendants in the Auckland Province prior to the end of 1852\*](#)

**Firefly** (arrived 05/01/1858) in [\*The Lyttelton Times\*](#), 09/01/1858, p 4

**Firefly** (arrived 26/07/1858) in [\*The Lyttelton Times\*](#), 28/07/1858, p 5

**Flash** (arrived 17/01/1855) in [\*The Lyttelton Times\*](#), 20/01/1855, p 4

**Flash** (arrived 23/01/1855) in [\*The Lyttelton Times\*](#), 24/01/1855, p 4

**Flash** (arrived 29/01/1855) in [\*The Lyttelton Times\*](#), 31/01/1855, p 4

**Flash** (arrived 15/06/1855) in [\*The Lyttelton Times\*](#), 16/06/1855, p 4

**Flora** (arrived 1848) in Eadie, F. [\*Roll of early settlers and descendants in the Auckland Province prior to the end of 1852\*](#)

**Fly** (arrived 20/11/1851) in [\*The Lyttelton Times\*](#), 22/11/1851, p 5

**Fly** (arrived 15/12/1851) in [\*The Lyttelton Times\*](#), 20/12/1851, p 4

**Fly** (arrived 04/01/1852) in [\*The Lyttelton Times\*](#), 10/01/1852, p 4

**Fly** (arrived 12/02/1852) in [\*The Lyttelton Times\*](#), 14/02/1852, p 4

**Fly** (arrived 22/03/1852) in [\*The Lyttelton Times\*](#), 27/03/1852, p 4

**Fortuna** (arrived 1840) in Eadie, F. [\*Roll of early settlers and descendants in the Auckland Province prior to the end of 1852\*](#)

**Francis** (arrived 14/04/1858) in [\*The Lyttelton Times\*](#), 17/04/1858, p 4

**Francis** (arrived 21/06/1858) in [\*The Lyttelton Times\*](#), 23/06/1858, p 4

**Francis Speight** (arrived 1835) in Eadie, F. [\*Roll of early settlers and descendants in the Auckland Province prior to the end of 1852\*](#)

**Freideburg** (arrived 31/08/1872) in [The Lyttelton Times](#), 02/09/1872, p 2 with only cabin passengers listed and an account of the journey

**Friendship** (arrived 1834) in Eadie, F. [Roll of early settlers and descendants in the Auckland Province prior to the end of 1852](#)

**Fyfe** (arrived 1843) in Ward, L. E. [Early Wellington](#), p 117

**Gainsborough** (arrived 02/05/1868) in [The Lyttelton Times](#), 04/05/1868, p 4

**Gananogue** (arrived 09/05/1860) in [The Lyttelton Times](#), 12/05/1860, p 4

**Gazelle** (arrived 21/07/1851) in [The Lyttelton Times](#), 26/07/1851, p 4

**Gazelle** (arrived 05/11/1851) in [The Lyttelton Times](#), 08/11/1851, p 4

**Gazelle** (arrived 18/03/1854) in [The Lyttelton Times](#), 25/03/1854, p 6

**Gazelle** (arrived 22/09/1857) in [The Lyttelton Times](#), 23/09/1857, p 5

**Gem** (arrived 1841) in Ward, L. E. [Early Wellington](#), p 110

**General Gates** (arrived 02/08/1814) in Eadie, F. [Roll of early settlers and descendants in the Auckland Province prior to the end of 1852](#)

**General Gates** (arrived 02/08/1819) in Eadie, F. [Roll of early settlers and descendants in the Auckland Province prior to the end of 1852](#)

**George Fife** (06/1842-10/1842) in Ward, L. E. [Early Wellington](#), p 113

**George Fyfe** (16/06/1842-12/12/1842) in Eadie, F. [Roll of early settlers and descendants in the Auckland Province prior to the end of 1852](#)

Also in Neale, J. [Pioneer passengers to Nelson by sailing ship, March 1842-June 1843](#), p 163

**Geraldine Paget** (arrived 27/12/1874) in [The Lyttelton Times](#), 28/12/1874, p 2

**Gertrude** (06/1841-03/11/1841) in Ward, L. E. [Early Wellington](#), p 99

**Gertrude** (arrived 22/03/1858) in [The Lyttelton Times](#), 24/03/1858, p 4

**Gil Blas** (arrived 25/04/1855) in [The Lyttelton Times](#), 28/04/1855, p 5

**Gil Blas** (arrived 13/11/1858) in [The Lyttelton Times](#), 17/11/1858, p 4

**Glenbervie** (02/10/1839-07/03/1840) in Ward, L. E. [Early Wellington](#), p 37

**Glenloca** (18/09/1877-19/12/1877) in [The Lyttelton Times](#), 20/12/1877, p 2

**Glenmark** (29/10/1864-21/01/1865) in [Emigration to Canterbury: shipping lists, 1856-1874 \(digital version\)](#)

Also in "Shipping Intelligence", [The Lyttelton Times](#), 24 January 1865, p 4. Cabin passengers listed and description of voyage and arrival followed by government immigrants listed by trades.

- Glenmark** (15/09/1865-18/12/1865) in [The Lyttelton Times](#), 18/12/1865, p 2
- Glenmark** (02/08/1866-20/12/1866) in [The Lyttelton Times](#), 21/12/1866, p 2
- Glenmark** (18/08/1867-14/11/1867) in [Emigration to Canterbury: shipping lists, 1856-1874 \(digital version\)](#)  
Also in "Shipping", [The Lyttelton Times](#), 15 November 1867, p 2.  
Saloon passengers listed. Account of voyage plus a testimonial for Capt. Wrangmore from passengers. Assisted government immigrants listed plus an analysis of their trades.
- Glenmark** (08/09/1868-12/12/1868) in [The Lyttelton Times](#), 14/12/1868, p 2
- Glenmark** (arrived 01/11/1871) in [The Lyttelton Times](#), 02/11/1871, p 2
- Glenora** (18/09/1877-19/12/1877) in [The Lyttelton Times](#), 20/12/1877, p 2
- Glenswilly** (arrived 1841) in Eadie, F. [Roll of early settlers and descendants in the Auckland Province prior to the end of 1852](#)
- Glentanner** (arrived 03/10/1857) in [The Lyttelton Times](#), 07/10/1857, p 4
- Glentanner** (arrived 08/06/1861) in *The Press*, 15/06/1861, p 6
- Gov. MacQuarie** (arrived 15/08/1824) in Eadie, F. [Roll of early settlers and descendants in the Auckland Province prior to the end of 1852](#)
- Governor** (arrived 1843) in Ward, L. E. [Early Wellington](#), p 118
- Grafton** (arrived 06/06/1856) in [The Lyttelton Times](#), 11/06/1856, p 5
- Grafton** (arrived 27/06/1856) in [The Lyttelton Times](#), 28/06/1856, p 6
- Grasmere** (arrived 04/05/1855) in [The Lyttelton Times](#), 09/05/1855, p 4
- Gratitude** (arrived 01/05/1855) in [The Lyttelton Times](#), 02/05/1855, p 4
- Gratitude** (arrived 19/08/1855) in [The Lyttelton Times](#), 22/08/1855, p 5
- Gratitude** (arrived 13/02/1856) in [The Lyttelton Times](#), 16/02/1856, p 4
- Gratitude** (arrived 13/07/1856) in [The Lyttelton Times](#), 16/07/1856, p 6
- Greymouth** (arrived 07/05/1865) in [The Lyttelton Times](#), 09/05/1865, p 4
- Gwalior** (arrived 18/08/1852) in Rutherford, J. & Skinner, W. H. [The establishment of the New Plymouth settlement in New Zealand, 1841-1843](#), Chapter 14
- Gwalior** (arrived 04/05/1853) in [The Lyttelton Times](#), 07/05/1853, p 6
- Gypsy** (arrived 11/10/1856) in Rutherford, J. & Skinner, W. H. [The establishment of the New Plymouth settlement in New Zealand, 1841-1843](#), Chapter 14
- Gypsy** (arrived 30/05/1858) in [The Lyttelton Times](#), 02/06/1858, p 4



- Halcione** (19/05/1876-25/08/1876) in [The Lyttelton Times](#), 26/08/1876, p 2
- Halcione** (18/08/1877-28/11/1877) in [The Lyttelton Times](#), 29/11/1877, p 2
- Hamilla Mitchell** (arrived 03/02/1854) in Rutherford, J. & Skinner, W. H. [The establishment of the New Plymouth settlement in New Zealand, 1841-1843](#), Chapter 14
- Hampshire** (10/12/1852-06/05/1853) in [The Lyttelton Times](#), 07/05/1853, p 6
- Hannah** (arrived 1840) in Ward, L. E. [Early Wellington](#), p 74
- Hannah** (arrived 05/12/1856) in [The Lyttelton Times](#), 06/12/1856, p 6
- Hannah Watson** (arrived 01/1840) in Eadie, F. [Roll of early settlers and descendants in the Auckland Province prior to the end of 1852](#)
- Harlequin** (arrived 1836) in Eadie, F. [Roll of early settlers and descendants in the Auckland Province prior to the end of 1852](#)
- Harp** (arrived 16/05/1858) in [The Lyttelton Times](#), 19/05/1858, p 4
- Harp** (arrived 17/09/1858) in [The Lyttelton Times](#), 18/09/1858, p 4
- Harrington** (arrived 1841) in Eadie, F. [Roll of early settlers and descendants in the Auckland Province prior to the end of 1852](#)
- Harrington** (arrived 1841) in Ward, L. E. [Early Wellington](#), p 94
- Harry** (arrived 06/12/1855) in [The Lyttelton Times](#), 08/12/1855, p 6
- Harry** (arrived 07/08/1856) in [The Lyttelton Times](#), 09/08/1856, p 6
- Harry** (arrived in Akaroa 23/08/1856) in [The Lyttelton Times](#), 03/09/1856, p 6
- Harry** (arrived 06/11/1856) in [The Lyttelton Times](#), 08/11/1856, p 6
- Harvest Home** (13/10/1871-30/12/1871) in [The Lyttelton Times](#), 01/01/1872, p 2
- Harwood** (arrived 14/12/1860) in [The Lyttelton Times](#), 15/12/1860, p 4
- Hashemy** (arrived 16/12/1852) in [The Lyttelton Times](#), 18/12/1852, p 6
- Hashemy** (arrived 03/04/1853) in [The Lyttelton Times](#), 09/04/1853, p 6
- Hashemy** (arrived 24/07/1853) in [The Lyttelton Times](#), 30/07/1853, p 6
- Hashemy** (arrived 27/11/1853) in [The Lyttelton Times](#), 31/12/1853, p 6
- Hashemy** (arrived 11/05/1854) in [The Lyttelton Times](#), 13/05/1854, p 6
- Hastings** (arrived 02/12/1856) in [The Lyttelton Times](#), 03/12/1856, p 7
- Hastings** (arrived 20/03/1858) in [The Lyttelton Times](#), 24/03/1858, p 4

- Hawarden Castle** (04/04/1879-17/07/1879) in [The Lyttelton Times](#), 19/07/1879, p 4
- Helen** (arrived 01/07/1857) in [The Lyttelton Times](#), 04/07/1857, p 4
- Helen Burns** (arrived 01/01/1874) in [The Lyttelton Times](#), 03/01/1874, p 2
- Helen Denny** (24/04/1880-19/07/1880) in [The Lyttelton Times](#), 20/07/1880, p 4
- Helena** (arrived 1840) in Ward, L. E. [Early Wellington](#), p 74
- Henrietta** (arrived 05/11/1851 in [The Lyttelton Times](#), 08/11/1851, p 4
- Henrietta** (arrived 26/11/1851) in [The Lyttelton Times](#), 29/11/1851, p 4
- Henrietta** (arrived 01/02/1852) in [The Lyttelton Times](#), 06/03/1852, p 4
- Henry** (arrived 25/02/1852) in [The Lyttelton Times](#), 28/02/1852, p 5
- Henry** (arrived 17/01/1858) in [The Lyttelton Times](#), 20/01/1858, p 4
- Henry** (arrived 12/03/1858) in [The Lyttelton Times](#), 13/03/1858, p 4
- Henry** (arrived 27/03/1858) in [The Lyttelton Times](#), 31/03/1858, p 4
- Herald, HMS** (arrived 29/01/1840) in Eadie, F. [Roll of early settlers and descendants in the Auckland Province prior to the end of 1852](#)
- Hereford** (arrived 14/07/1874) in [The Lyttelton Times](#), 15/07/1874, p 2
- Hereford** (arrived 19/01/1878) in [The Lyttelton Times](#), 21/01/1878, p 2
- Heroes of Alma** (arrived 20/06/1857) in [The Lyttelton Times](#), 24/06/1857, p 6
- Highlander** (arrived 01/05/1857) in [The Lyttelton Times](#), 02/05/1857, p 8
- Himalaya** (arrived 1841) in Ward, L. E. [Early Wellington](#), p 94
- Himalaya** (arrived 1842) in Eadie, F. [Roll of early settlers and descendants in the Auckland Province prior to the end of 1852](#)
- Himalaya** (arrived 23/12/1843) in Rutherford, J. & Skinner, W. H. [The establishment of the New Plymouth settlement in New Zealand, 1841-1843](#), Chapter 14
- Himalaya** (11/1865-03/02/1866) in [Emigration to Canterbury: shipping lists, 1856-1874 \(digital version\)](#)  
Also in “Shipping”, [The Lyttelton Times](#), 5 February 1866, p 2. Cabin , second cabin and steerage passengers listed. Arrival described and account of voyage. Testimonial for Captain Cow from passengers.  
“Shipping”, [The Lyttelton Times](#), 12 February 1866, p 4. Arrival of ship and account of voyage. Testimonial for Captain Cow from passengers.
- Himalaya** (arrived 10/02/1867) in [The Lyttelton Times](#), 02/02/1867, p 2 and 11/02/1867, p 2

**Himalaya** (arrived 03/03/1873) in [The Lyttelton Times](#), 04/03/1873, p 2

**Hope** (arrived 1840) in Ward, L. E. [Early Wellington](#), p 74

**Huntress** (arrived 21/04/1863) in *The Press*, 23/04/1863, p 4 Also in [The Lyttelton Times](#), 22/04/1863, p 4

**Hurunui** (arrived 13/12/1878) in [The Lyttelton Times](#), 14/12/1878, p 2

**Hydaspes** (03/07/1869-29/09/1869) in [Emigration to Canterbury: shipping lists, 1856-1874 \(digital version\)](#)

Also in “Shipping”, [The Lyttelton Times](#), 30 September 1869, p 2. Cabin passengers listed. Account of arrival and voyage.

Also in *The Press*, 10/09/1869, p 2 and 30/09/1869, p 2

**Ilio-Mama** (arrived 22/02/1850) in Eadie, F. [Roll of early settlers and descendants in the Auckland Province prior to the end of 1852](#)

**Ilio-Mama** (arrived 13/04/1852) in Eadie, F. [Roll of early settlers and descendants in the Auckland Province prior to the end of 1852](#)

**Inchinnen** (arrived 27/05/1845) in Eadie, F. [Roll of early settlers and descendants in the Auckland Province prior to the end of 1852](#)

**Inchinnen** (arrived 27/05/1852) in Eadie, F. [Roll of early settlers and descendants in the Auckland Province prior to the end of 1852](#)

**Indemnity** (arrived 1842) in Ward, L. E. [Early Wellington](#), p 115

**Indian Empire** (arrived 23/03/1864) in *The Press*, 25/03/1864, p 2 Also in [The Lyttelton Times](#), 26/3/1864, p 4

**Indian Empire** (17/04/1865-23/07/1865) in *The Press*, 24/07/1865, p 2

**Indiana** (02/08/1858-23/11/1858) in [Emigration to Canterbury: shipping lists, 1856-1874 \(digital version\)](#)

Also in “Shipping News”, [The Lyttelton Times](#), 24 November 1858, p 4. Arrival and voyage described. Cabin, second cabin and steerage passengers listed followed by a list of government immigrants. Second cabin and steerage passengers for Wellington are listed separately. Births and deaths on board.

**Indus** (01/10/1842-05/02/1843) in Neale, J. [Pioneer passengers to Nelson by sailing ship, March 1842-June 1843](#), p 169

**Indus** (arrived 1843) in Eadie, F. [Roll of early settlers and descendants in the Auckland Province prior to the end of 1852](#)

**Indus** (arrived 1849) in Eadie, F. [Roll of early settlers and descendants in the Auckland Province prior to the end of 1852](#)

**Inkerman** (arrived 1850) in Eadie, F. [Roll of early settlers and descendants in the Auckland Province prior to the end of 1852](#)

- Integrity** (arrived 1840) in Ward, L. E. [Early Wellington](#), p 74
- Inverdrue** (29/12/1875-10/04/1876) in [The Lyttelton Times](#), 11/04/1876, p 2
- Invererne** (23/11/1875-22/02/1876) in [The Lyttelton Times](#), 23/02/1876, p 2
- Ionic** (arrived 15/06/1883) in [The Lyttelton Times](#), 16/06/1883, p 4
- Ionic** (arrived 16/11/1883) in [The Lyttelton Times](#), 17/11/1883, p 4
- Ionic** (arrived 21/03/1884) in [The Lyttelton Times](#), 22/03/1884, p 4
- Isabella Anna** (arrived 1842) in Eadie, F. [Roll of early settlers and descendants in the Auckland Province prior to the end of 1852](#)
- Isabella Hercus** (24/10/1850-01/03/1851) in [Canterbury jubilee celebrations : Old Colonists' Committee... passenger lists of Canterbury Association ships](#)  
Also in [The Lyttelton Times](#), 08/03/1851, p 4  
See also Rutherford, J. & Skinner, W. H. [The establishment of the New Plymouth settlement in New Zealand, 1841-1843](#), Chapter 14
- Isabella Hercus** (03/09/1855-04/01/1856) in [Emigration to Canterbury: shipping lists, 1856-1874 \(digital version\)](#)  
Also in [The Lyttelton Times](#), 05/01/1856, p 4
- Isles of the South** (arrived 02/02/1874) in [The Lyttelton Times](#), 03/02/1874, p 2
- Ivanhoe** (arrived 12/06/1864) in [The Lyttelton Times](#), 14/06/1864, p 5. List of cabin passengers, account of voyage and list of Provincial Government immigrants, analysis of trades and summary of nationality.
- James** (arrived 18/03/1839) in Eadie, F. [Roll of early settlers and descendants in the Auckland Province prior to the end of 1852](#)
- James** (arrived 1841) in Ward, L. E. [Early Wellington](#), p 94 Also Eadie, F. [Roll of early settlers and descendants in the Auckland Province prior to the end of 1852](#)
- James Daly** (arrived 24/09/1856) in [The Lyttelton Times](#), 27/09/1856, p 6
- James Gibson** (arrived 15/09/1857) in [The Lyttelton Times](#), 16/09/1857, p 4
- James Stewart** (arrived 1838) in Eadie, F. [Roll of early settlers and descendants in the Auckland Province prior to the end of 1852](#)
- James Wishart** (13/11/1877-25/02/1878) in [The Lyttelton Times](#), 25/02/1878, p 2
- Jane** (arrived 08/09/1853) in [The Lyttelton Times](#), 10/09/1853, p 6
- Jane Gifford** (arrived 09/10/1842) in Eadie, F. [Roll of early settlers and descendants in the Auckland Province prior to the end of 1852](#)
- Java** (arrived 1845) in Eadie, F. [Roll of early settlers and descendants in the Auckland Province prior to the end of 1852](#)
- Jessie Readman** (25/07/1880-22/10/1880) in [The Lyttelton Times](#), 23/10/1880, p 4

**John Bull** (arrived 06/01/1848) in Eadie, F. [Roll of early settlers and descendants in the Auckland Province prior to the end of 1852](#)

**John Bull** (08/03/1856) in [The Lyttelton Times](#), 19/03/1856, p 6

**John Falstaff** (arrived 04/05/1841) in Eadie, F. [Roll of early settlers and descendants in the Auckland Province prior to the end of 1852](#)

**John Lawson** (30/10/1859-28/02/1860) in [The Lyttelton Times](#), 03/03/1860, p 4

**John Lord** (arrived 12/01/1847) in Eadie, F. [Roll of early settlers and descendants in the Auckland Province prior to the end of 1852](#)

**John Phillips** (arrived 09/05/1852) in Rutherford, J. & Skinner, W. H. [The establishment of the New Plymouth settlement in New Zealand, 1841-1843](#), Chapter 14

**John Taylor** (10/07/1853-18/10/1853) in [The Lyttelton Times](#), 22/10/1853, p 6

**John Temperley** (arrived 21/06/1866) in [The Lyttelton Times](#), 22/06/1866, p 2

**John Wesley** (arrived 25/02/1852) in Eadie, F. [Roll of early settlers and descendants in the Auckland Province prior to the end of 1852](#)

**John Wickliffe** (24/11/1847-23/03/1848) in Hocken, T. M., [Contributions to the early history of New Zealand \(Otago\)](#), Appendix F

**Joseph Fletcher** (arrived 31/08/1852) in Eadie, F. [Roll of early settlers and descendants in the Auckland Province prior to the end of 1852](#)

**Joseph Fletcher** (arrived 08/10/1852) in Eadie, F. [Roll of early settlers and descendants in the Auckland Province prior to the end of 1852](#)  
Also in Rutherford, J. & Skinner, W. H. [The establishment of the New Plymouth settlement in New Zealand, 1841-1843](#), Chapter 14

**Joseph Fletcher** (arrived 17/09/1853) in Rutherford, J. & Skinner, W. H. [The establishment of the New Plymouth settlement in New Zealand, 1841-1843](#), Chapter 14

**Joseph Fletcher** (19/06/1854-04/10/1854) in Rutherford, J. & Skinner, W. H. [The establishment of the New Plymouth settlement in New Zealand, 1841-1843](#), Chapter 14

**Joseph Fletcher** (arrived 24/10/1856) in [The Lyttelton Times](#), 25/10/1856, p 6

**Josephine Willis** (arrived 25/01/1855) in Rutherford, J. & Skinner, W. H. [The establishment of the New Plymouth settlement in New Zealand, 1841-1843](#), Chapter 14

**Julia** (arrived 16/10/1847) in Eadie, F. [Roll of early settlers and descendants in the Auckland Province prior to the end of 1852](#)

**Julia** (arrived 26/11/1851) in [The Lyttelton Times](#), 29/11/1851, p 4

- Julia** (arrived 04/02/1852) in [The Lyttelton Times](#), 07/02/1852, p 4
- Julia Ann** (arrived 22/09/1857) in [The Lyttelton Times](#), 23/09/1857, p 5
- Jura** (arrived 15/12/1858) in [The Lyttelton Times](#), 18/12/1858, p 4
- Justine** (arrived 04/05/1840) in Eadie, F. [Roll of early settlers and descendants in the Auckland Province prior to the end of 1852](#)
- Justine de Bordeaux** (arrived 1840) in Eadie, F. [Roll of early settlers and descendants in the Auckland Province prior to the end of 1852](#)
- Kaka** (arrived 15/03/1852) in [The Lyttelton Times](#), 20/03/1852, p 4
- Kaka** (arrived 20/03/1853) in [The Lyttelton Times](#), 26/03/1853, p 6
- Kaka** (arrived 04/05/1853) in [The Lyttelton Times](#), 07/05/1853, p 6
- Karere** (arrived 1833) in Eadie, F. [Roll of early settlers and descendants in the Auckland Province prior to the end of 1852](#)
- Kate** (arrived 1840) in Eadie, F. [Roll of early settlers and descendants in the Auckland Province prior to the end of 1852](#)
- Kate Kearney** (arrived 07/11/1855) in Rutherford, J. & Skinner, W. H. [The establishment of the New Plymouth settlement in New Zealand, 1841-1843](#), Chapter 14
- Kate Kearney** (arrived 28/04/1857) in [The Lyttelton Times](#), 29/04/1857, p 5
- Kate Kearney** (arrived 29/05/1857) in [The Lyttelton Times](#), 30/05/1857, p 7
- Kate Kearney** (arrived 02/10/1857) in [The Lyttelton Times](#), 03/10/1857, p 4
- Kate Kearney** (arrived 05/11/1857) in [The Lyttelton Times](#), 07/11/1857, p 4
- Katherine Johnstone** (arrived 26/09/1853) in [The Lyttelton Times](#), 01/10/1853, p 6
- Kawai** (arrived 14/12/1853) in [The Lyttelton Times](#), 17/12/1853, p 6
- Kelso** (arrived 20/10/1849) in Rutherford, J. & Skinner, W. H. [The establishment of the New Plymouth settlement in New Zealand, 1841-1843](#), Chapter 14  
Also in Hocken, T M., [Contributions to the early history of New Zealand \(Otago\)](#), Appendix F
- Kensington** (arrived 18/07/1862) in [The Lyttelton Times](#), 19/07/1862, p 4
- King Henry** (arrived 14/04/1842) in Eadie, F. [Roll of early settlers and descendants in the Auckland Province prior to the end of 1852](#)
- Kirkland** (27/04/1863-16/08/1863) in [The Lyttelton Times](#), 19/08/1863, p 4
- Kiwi** (arrived 29/10/1851) in [The Lyttelton Times](#), 01/11/1851, p 4

**Labuan** (28/04/1851-14/08/1851) in [Canterbury jubilee celebrations : Old Colonists' Committee... passenger lists of Canterbury Association ships](#)

**Lactura** (02/06/1875-27/09/1875) in [The Lyttelton Times](#), 28/09/1875, p 2

**Lady Clarke** (arrived 25/04/1854) in Rutherford, J. & Skinner, W. H. [The establishment of the New Plymouth settlement in New Zealand, 1841-1843](#), Chapter 14

**Lady Cornwall** (arrived 1852) in Ward, L. E. [Early Wellington](#), p 160

**Lady Franklin** (arrived 1848) in Eadie, F. [Roll of early settlers and descendants in the Auckland Province prior to the end of 1852](#)

**Lady Java** (arrived 1846) in Eadie, F. [Roll of early settlers and descendants in the Auckland Province prior to the end of 1852](#)

**Lady Jocelyn** (arrived 11/11/1872) in [The Lyttelton Times](#), 12/11/1872, p 2

**Lady Jocelyn** (arrived 21/01/1875) in [The Lyttelton Times](#), 22/01/1875, p 2

**Lady Jocelyn** (arrived 08/12/1879) in [The Lyttelton Times](#), 09/12/1879, p 4

**Lady Lee** (arrived 1839) in Eadie, F. [Roll of early settlers and descendants in the Auckland Province prior to the end of 1852](#)

**Lady Leigh** (arrived 1843) in Ward, L. E. [Early Wellington](#), p 118

**Lady Lilford** (arrived 13/04/1840) in Eadie, F. [Roll of early settlers and descendants in the Auckland Province prior to the end of 1852](#)  
Also in Ward, L. E. [Early Wellington](#), p 74

**Lady Nugent** (10/1840-03/1841) in Ward, L. E. [Early Wellington](#), p 80

**Lady Nugent** (arrived 17/03/1841) in Eadie, F. [Roll of early settlers and descendants in the Auckland Province prior to the end of 1852](#)

**Lady Nugent** (07/12/1849-26/03/1850) in Hocken, T M., [Contributions to the early history of New Zealand \(Otago\)](#), Appendix F

**Lady Nugent** (30/05/1851-18/09/1851) in [Canterbury jubilee celebrations : Old Colonists' Committee... passenger lists of Canterbury Association ships](#)

**Lady of the Lake** (arrived 17/02/1858) in [The Lyttelton Times](#), 17/02/1858, p 4

**Lallah Rookh** (arrived 05/04/1849) in Eadie, F. [Roll of early settlers and descendants in the Auckland Province prior to the end of 1852](#)

**Lanarkshire** (20/03/1875-08/07/1875) in [The Lyttelton Times](#), 09/07/1875, p 2

**Lancashire Witch** (arrived 13/10/1863) in [The Lyttelton Times](#), 15/10/1863, p 4

**Lancashire Witch** (arrived 29/07/1867) in [The Lyttelton Times](#), 30/07/1867, p 2

- Langstone** (arrived 17/06/1873) in [The Lyttelton Times](#), 18/06/1873, p 2
- Langstone** (arrived 10/12/1875) in [The Lyttelton Times](#), 11/12/1875, p 2
- Lapwing** (arrived 1841) in Ward, L. E. [Early Wellington](#), p 94
- Larkins** (06/06/1849-11/09/1849) in Hocken, T M., [Contributions to the early history of New Zealand \(Otago\)](#), Appendix F
- Leichart** (10/08/1866-23/11/1866) in [The Lyttelton Times](#), 26/11/1866, p 2
- Levant** (arrived 1848) in Eadie, F. [Roll of early settlers and descendants in the Auckland Province prior to the end of 1852](#)
- Liberta** (arrived 23/08/1856) in [The Lyttelton Times](#), 27/08/1856, p 4
- Light Brigade** (19/05/1868-26/08/1868) in [Emigration to Canterbury: shipping lists, 1856-1874 \(digital version\)](#)  
“Shipping”, [The Lyttelton Times](#), 27 August 1868, p 2. Chief cabin , second cabin and steerage passengers listed. Account of arrival and voyage plus captain’s report. Government immigrants listed plus summary of their trades.
- Lincoln** (02/02/1867-19/06/1867) in [The Lyttelton Times](#), 21/06/1867, p 2  
“Shipping”, List of saloon passengers.  
Also “Arrival of the ship Lincoln”, description of voyage and list of assisted Government immigrants plus a summary of their trades.
- Lion** (arrived 27/11/1858) in [The Lyttelton Times](#), 01/12/1858, p 4
- Little Ariel** (arrived 1839) in Eadie, F. [Roll of early settlers and descendants in the Auckland Province prior to the end of 1852](#)
- Lloyds** (departed 11/09/1841) in Neale, J. [Landfall Nelson by sailing ship 1642-1842](#), p 135
- Loch Awe** (04/05/1880-03/08/1880) in [The Lyttelton Times](#), 03/08/1880, p 4
- Loch Cree** (arrived 12/03/1878) in [The Lyttelton Times](#), 13/03/1878, p 2
- Loch Cree** (03/06/1880-01/09/1880) in [The Lyttelton Times](#), 02/09/1880, p 4
- Loch Fleet** (16/08/1877-24/11/1877) in [The Lyttelton Times](#), 26/11/1877, p 2
- London** (13/08/1840-12/12/1840) in Ward, L. E. [Early Wellington](#), p 73
- London** (arrived 12/12/1840) in Eadie, F. [Roll of early settlers and descendants in the Auckland Province prior to the end of 1852](#)
- London** (arrived 12/1840) in Rutherford, J. & Skinner, W. H. [The establishment of the New Plymouth settlement in New Zealand, 1841-1843](#), Chapter 14
- London** (17/11/1841-10/04/1842) in Neale, J. [Pioneer passengers to Nelson by sailing ship, March 1842-June 1843](#), p 150



- London** (01/1842-01/05/1842) in Ward, L. E. [\*Early Wellington\*](#), p 106
- Lord Ashley** (arrived 08/12/1858) in [\*The Lyttelton Times\*](#), 11/12/1858, p 4
- Lord Ashley** (arrived 13/12/1858) in [\*The Lyttelton Times\*](#), 15/12/1858, p 4
- Lord Ashley** (arrived 26/12/1858) in *The Press*, 29/12/1858, p 7
- Lord Ashley** (arrived 30/12/1858) in [\*The Lyttelton Times\*](#), 31/12/1858, p 4
- Lord Ashley** (arrived 29/07/1863) in *The Press*, 03/08/1863, p 5
- Lord Auckland** (arrived 07/02/1842) in Eadie, F. [\*Roll of early settlers and descendants in the Auckland Province prior to the end of 1852\*](#)
- Lord Auckland** (arrived 1842) in Ward, L. E. [\*Early Wellington\*](#), p 115
- Lord Auckland** (departed 21/09/1841) in Neale, J. [\*Landfall Nelson by sailing ship 1642-1842\*](#), p 141
- Lord William Bentinck** (08/01/1841-24/05/1841) in Ward, L. E. [\*Early Wellington\*](#), p84
- Lord William Bentinck** (arrived 15/04/1850) in Eadie, F. [\*Roll of early settlers and descendants in the Auckland Province prior to the end of 1852\*](#)
- Lord William Bentick** (arrived 1855) in Rutherford, J. & Skinner, W. H. [\*The establishment of the New Plymouth settlement in New Zealand, 1841-1843\*](#), Chapter 14
- Lord Worsley** (arrived 23/01/1859) in Rutherford, J. & Skinner, W. H. [\*The establishment of the New Plymouth settlement in New Zealand, 1841-1843\*](#), Chapter 14
- Louis and Miriam** (arrived 19/08/1851) in [\*The Lyttelton Times\*](#), 25/10/1851, p 5
- Louis and Miriam** (arrived 24/11/1858) in [\*The Lyttelton Times\*](#), 27/11/1858, p 4
- Louis Campbell** (arrived 18/08/1845) in Eadie, F. [\*Roll of early settlers and descendants in the Auckland Province prior to the end of 1852\*](#)
- Louisa** (arrived 13/01/1856) in [\*The Lyttelton Times\*](#), 16/01/1856, p 4
- Louisa** (arrived 13/03/1856) in [\*The Lyttelton Times\*](#), 15/03/1856, p 6
- Louisa Campbell** (arrived 24/07/1844) in Rutherford, J. & Skinner, W. H. [\*The establishment of the New Plymouth settlement in New Zealand, 1841-1843\*](#), Chapter 14
- Louisa Campbell** (arrived 01/04/1847) in Eadie, F. [\*Roll of early settlers and descendants in the Auckland Province prior to the end of 1852\*](#)
- Lucy James** (arrived 27/04/1857) in [\*The Lyttelton Times\*](#), 29/04/1857, p 5

- Lucy James** (arrived 24/06/1857) in [The Lyttelton Times](#), 27/06/1857, p 6
- Lucy James** (arrived 15/07/1858) in [The Lyttelton Times](#), 17/07/1858, p 3
- Lucy James** (arrived 12/10/1858) in [The Lyttelton Times](#), 13/10/1858, p 4
- Lucy Sharp** (arrived 1841) in Ward, L. E. [Early Wellington](#), p 94
- Lurline** (30/04/1879-01/08/1879) in [The Lyttelton Times](#), 02/08/1879, p 4
- Lutterworth** (15/05/1878-31/08/1878) in [The Lyttelton Times](#), 02/09/1878, p 2
- Lyttelton** (18/11/1872-10/01/1873) in [The Lyttelton Times](#), 11/01/1873, p 2
- Macclesfield** (arrived 05/11/1855) in [The Lyttelton Times](#), 07/11/1855, p 5
- Madras** (arrived 01/09/1846) in Rutherford, J. & Skinner, W. H. [The establishment of the New Plymouth settlement in New Zealand, 1841-1843](#), Chapter 14
- Madras** (arrived 09/10/1846) in Eadie, F. [Roll of early settlers and descendants in the Auckland Province prior to the end of 1852](#)
- Magnet** (arrived 1839) in Eadie, F. [Roll of early settlers and descendants in the Auckland Province prior to the end of 1852](#)
- Mahtoree** (arrived 18/01/1854) in [The Lyttelton Times](#), 21/01/1854, p 6
- Maitland** (arrived 02/05/1840) in Eadie, F. [Roll of early settlers and descendants in the Auckland Province prior to the end of 1852](#)
- Malay** (arrived 08/07/1858) in [The Lyttelton Times](#), 10/07/1858, p 4
- Mallowdale** (04/09/1878-13/12/1878) in [The Lyttelton Times](#), 14/12/1878, p 2
- Mandarin** (arrived 1841) in Ward, L. E. [Early Wellington](#), p 94
- Mandarin** (arrived 16/10/1843) in Eadie, F. [Roll of early settlers and descendants in the Auckland Province prior to the end of 1852](#)
- Manford** (arrived 07/06/1855) in [The Lyttelton Times](#), 09/06/1855, p 5
- Marchioness** (arrived 09/12/1858) in [The Lyttelton Times](#), 11/12/1858, p 4
- Maori** (arrived 19/08/1855) in [The Lyttelton Times](#), 22/08/1855, p 5
- Maori** (arrived 27/11/1855) in [The Lyttelton Times](#), 01/12/1855, p 6
- Maori** (22/03/1858-14/07/1858) in [Judsons of New Zealand](#), p 12  
Also in [The Lyttelton Times](#), 30/06/1858, p 4, and 17/07/1858, p 3
- Margaret** (arrived 1841) in Eadie, F. [Roll of early settlers and descendants in the Auckland Province prior to the end of 1852](#)
- Margaretha Roesner** (arrived 04/07/1859) in [The Lyttelton Times](#), 06/07/1859, p 4

- Maria** (arrived 1851) in Ward, L. E. [Early Wellington](#), p 160
- Maria Elizabeth** (arrived 14/05/1855) in [The Lyttelton Times](#), 16/05/1855, p 6
- Maria Elizabeth** (arrived 26/10/1856) in [The Lyttelton Times](#), 29/10/1856, p 6
- Maria Elizabeth** (arrived 17/02/1858) in [The Lyttelton Times](#), 17/02/1858, p 4
- Maria Elizabeth** (arrived 16/07/1858) in [The Lyttelton Times](#), 21/07/1858, p 4
- Maria Theresa** (arrived 1842) in Eadie, F. [Roll of early settlers and descendants in the Auckland Province prior to the end of 1852](#)
- Maria Theresa** (arrived 1842) in Ward, L. E. [Early Wellington](#), p 115
- Mariner** (08/02/1849-05/06/1849) in Hocken, T M., [Contributions to the early history of New Zealand \(Otago\)](#), Appendix F
- Mariner** (arrived 1849) in Ward, L. E. [Early Wellington](#), p 154
- Mariner** (07/04/1850-06/08/1850) in Hocken, T M., [Contributions to the early history of New Zealand \(Otago\)](#), Appendix F
- Mariner** (arrived 11/10/1850) in Rutherford, J. & Skinner, W. H. [The establishment of the New Plymouth settlement in New Zealand, 1841-1843](#), Chapter 14
- Mariquita** (arrived 07/11/1858) in [The Lyttelton Times](#), 10/11/1858, p 6
- Marmion** (arrived 22/08/1875) in [The Lyttelton Times](#), 24/08/1875, p 2
- Marmora** (arrived 02/02/1857) in [The Lyttelton Times](#), 04/02/1857, p 8
- Marmora** (arrived 11/02/1856) in [The Lyttelton Times](#), 13/02/1856, p 4
- Marmora** (arrived 11/05/1856) in [The Lyttelton Times](#), 14/05/1856, p 6
- Marmora** (arrived 01/07/1856) in [The Lyttelton Times](#), 02/07/1856, p 6
- Martha Ridgway** (03/03/1840-08/07/1840) in Ward, L. E. [Early Wellington](#), p 54
- Martha Ridgway** (arrived 14/11/1840) in Eadie, F. [Roll of early settlers and descendants in the Auckland Province prior to the end of 1852](#)
- Martha Ridgway** (06/11/1841-07/04/1842) in Neale, J. [Pioneer passengers to Nelson by sailing ship, March 1842-June 1843](#), p 148
- Mary** (arrived 1841) in Ward, L. E. [Early Wellington](#), p 94
- Mary** (02/11/1848-11/04/1849) in Hocken, T M., [Contributions to the early history of New Zealand \(Otago\)](#), Appendix F
- Mary** (arrived 24/11/1851) in [The Lyttelton Times](#), 29/11/1851, p 4
- Mary** (arrived 10/01/1852) in [The Lyttelton Times](#), 17/01/1852, p 5

- Mary** (arrived 07/02/1852) in [The Lyttelton Times](#), 14/02/1852, p 4
- Mary** (arrived 18/03/1852) in [The Lyttelton Times](#), 20/03/1852, p 4
- Mary** (arrived 12/05/1852) in [The Lyttelton Times](#), 15/05/1852, p 4
- Mary** (arrived 18/02/1853) in [The Lyttelton Times](#), 19/02/1853, p 6
- Mary** (arrived 21/12/1853) in [The Lyttelton Times](#), 24/12/1853, p 6
- Mary** (arrived 13/09/1855) in [The Lyttelton Times](#), 15/09/1855, p 4
- Mary** (arrived 21/10/1855) in [The Lyttelton Times](#), 24/10/1855, p 4
- Mary** (arrived 21/10/1855) in [The Lyttelton Times](#), 24/10/1855, p 4
- Mary Ann** (arrived 08/11/1811) in Eadie, F. [Roll of early settlers and descendants in the Auckland Province prior to the end of 1852](#)
- Mary Ann** (departed 24/09/1841) in Neale, J. [Landfall Nelson by sailing ship 1642 1842](#), p 130
- Mary Ann** (arrived 09/02/1842) in Eadie, F. [Roll of early settlers and descendants in the Auckland Province prior to the end of 1852](#)
- Mary Anne** (26/04/1859-14/08/1859) in [Emigration to Canterbury: shipping lists, 1856-1874 \(digital version\)](#)  
“Shipping News”, [The Lyttelton Times](#), 3 August 1859, p 4. Government immigrants. Note it is published in newspaper prior to arrival of ship.  
“Shipping News”, [The Lyttelton Times](#), 6 August 1859, p 4. Cabin , second cabin and steerage passengers listed plus Provincial Government immigrants. Analysis of their trades. Births and deaths on board. Testimonials presented to the captain from the passengers.
- Mary Anne** (arrived 21/10/1862) in [The Lyttelton Times](#), 22/10/1862, p 4
- Mary Clarke** (arrived 25/02/1858) in [The Lyttelton Times](#), 25/02/1858, p 4
- Mary Clarke** (arrived 23/05/1858) in [The Lyttelton Times](#), 26/05/1858, p 4
- Mary Jane** (arrived 04/08/1853) in [The Lyttelton Times](#), 06/08/1853, p 6
- Mary Jane** (arrived 18/11/1855) in Rutherford, J. & Skinner, W. H. [The establishment of the New Plymouth settlement in New Zealand, 1841-1843](#), Chapter 14
- Mary Louisa** (arrived 25/02/1857) in [The Lyttelton Times](#), 28/02/1857, p 6
- Mary Louisa** (arrived 28/10/1857) in [The Lyttelton Times](#), 13/10/1857, p 4
- Mary Louisa** (arrived 23/11/1857) in [The Lyttelton Times](#), 25/11/1857, p 4
- Mary Louisa** (arrived 07/09/1858) in [The Lyttelton Times](#), 08/09/1858, p 4

**Mary Louisa** (arrived 29/09/1858) in [The Lyttelton Times](#), 02/10/1858, p 4 (This boat also carried passengers ex the Oliver Lang)

**Mary Paul** (arrived 20/02/1852) in [The Lyttelton Times](#), 21/02/1852, p 5

**Mary Thompson** (arrived 29/12/1856) in [The Lyttelton Times](#), 31/12/1856, p 6

**Mary Thompson** (arrived 12/01/1857) in [The Lyttelton Times](#), 14/01/1857, p 6

**Mary Thompson** (arrived 01/02/1857) in [The Lyttelton Times](#), 04/02/1857, p 8

**Mary Thompson** (arrived 09/12/1857) in [The Lyttelton Times](#), 04/02/1857, p 8

**Mary Thomson** (arrived 01/08/1857) in [The Lyttelton Times](#), 12/12/1857, p 4

**Mary Thomson** (arrived 27/05/1857) in [The Lyttelton Times](#), 30/05/1857, p 7

**Mary Thomson** (arrived 04/11/1857) in [The Lyttelton Times](#), 07/11/1857, p 4

**Mary Thomson** (arrived 25/01/1858) in [The Lyttelton Times](#), 27/01/1858, p 5

**Mary Thomson** (arrived 18/02/1858) in [The Lyttelton Times](#), 20/02/1858, p 4

**Mary Thomson** (arrived 10/06/1858) in [The Lyttelton Times](#), 12/06/1858, p 4

**Mary Thomson** (arrived 23/06/1858) in [The Lyttelton Times](#), 26/06/1858, p 4

**Mary Thomson** (arrived 17/10/1858) in [The Lyttelton Times](#), 20/10/1858, p 4

**Mary Thomson** (arrived 21/11/1858) in [The Lyttelton Times](#), 24/11/1858, p 4

**Matador** (arrived 20/09/1858) in [The Lyttelton Times](#), 22/09/1858, p 4

**Matador** (arrived 20/09/1858) in [The Lyttelton Times](#), 22/09/1858, p 4

**Matilda Hays** (arrived 01/12/1858) in [The Lyttelton Times](#), 04/12/1858, p 4

**Matoaka** (arrived 01/12/1860) in [The Lyttelton Times](#), 05/12/1860, p 4

**Matoaka** (15/11/1862-10/02/1862) in [Emigration to Canterbury: shipping lists, 1856-1874 \(digital version\)](#)

“Shipping Intelligence”, [The Lyttelton Times](#), 12 February 1862, p 4. Cabin passengers listed and account of voyage.

“Shipping Intelligence” [The Lyttelton Times](#), 15 February 1862, p 4. Provincial Government immigrants listed plus analysis of trades.

**Matoaka** (arrived 10/01/1867) in [The Lyttelton Times](#), 11/01/1867, p 2

**Matoaka** (arrived 11/02/1868) in “Shipping”, [The Lyttelton Times](#), 12 February 1868, p 2. Saloon passengers listed plus account of voyage and arrival which includes Captain Stevens' report.

**Matoaka** (arrived 08/02/1869) in [The Lyttelton Times](#), 09/02/1869, p 2

**Maukin** (arrived 1849) in Eadie, F. [\*Roll of early settlers and descendants in the Auckland Province prior to the end of 1852\*](#)

**May Queen** (22/08/1880-03/12/1880) in [\*The Lyttelton Times\*](#), 04/12/1880, p 4

**Melita** (23/07/1867-08/11/1867) in [\*The Lyttelton Times\*](#), 09/11/1867, p 2

**Mennock** (02/11/1878-01/02/1879) in [\*The Lyttelton Times\*](#), 03/02/1879, p 4

**Merchantman** arrived 09/10/1855 in [\*The Lyttelton Times\*](#), 03/10/1855 p 7 and 10/10/1855, p 5

**Mermaid** (29/09/1862-26/12/1862) in [\*Emigration to Canterbury: shipping lists, 1856-1874 \(digital version\)\*](#)

“Shipping Intelligence”, [\*The Lyttelton Times\*](#), 27 December 1862, p 4. Arrival and account of voyage with some cabin passengers mentioned and a testimonial for the captain from the passengers. Provincial immigrants listed.

“Shipping Intelligence”, [\*The Lyttelton Times\*](#), 31 December 1862, p 4. Cabin passengers listed.

**Mermaid** (15/11/1863-16/02/1864) in [\*Emigration to Canterbury: shipping lists, 1856-1874 \(digital version\)\*](#)

“Shipping Intelligence”, [\*The Lyttelton Times\*](#), 16 February 1864, p 4. Passengers listed plus analysis of trades and nationality of passengers.

“Shipping Intelligence”, [\*The Lyttelton Times\*](#), 18 February 1864, p 4. Cabin and second cabin passengers listed. Account of arrival and voyage. Government immigrants listed. Analysis of their trades and nationalities.

Also in *The Press*, 17/02/1864, p 2 and 18/02/1864, p 2

**Mermaid** (26/10/1864-21/01/1865) in [\*The Lyttelton Times\*](#), 24 January 1865, p 4. Cabin , second cabin and steerage passengers listed plus description of voyage and testimonial presented to Captain Rose by the passengers.

**Mermaid** (30/09/1865-01/01/1866) in [\*Emigration to Canterbury: shipping lists, 1856-1874 \(digitised version\)\*](#)

“Shipping”, [\*The Lyttelton Times\*](#), 28 December 1865, p 2. Assisted government immigrants listed. An analysis of their trades and nationality of passengers. Note it is published in newspaper prior to arrival of ship.

“Shipping”, [\*The Lyttelton Times\*](#), 2 January 1866, p 2. Cabin passengers listed. Account of arrival and testimonials presented to captain by passengers. Assisted immigrants listed. Analysis of their trades and nationalities.

**Mermaid** (15/09/1866-05/01/1867) in [\*Emigration to Canterbury: shipping lists, 1856-1874 \(digitised version\)\*](#)

“Shipping”, [\*The Lyttelton Times\*](#), 7 January 1867, p 2. Cabin passengers and assisted government immigrants listed. Account of arrival and voyage.

**Mermaid** (arrived 03/01/1868) in [\*The Lyttelton Times\*](#), 06/01/1868, p 2

**Mermaid** (05/10/1868-08/01/1869) in [\*Emigration to Canterbury: shipping lists, 1856-1874 \(digitised version\)\*](#)

“Shipping”, [\*The Lyttelton Times\*](#), 9 January 1869, p 2. Cabin passengers listed.

Account of arrival, the captain's report, testimonials presented to the captain by the passengers. Government immigrants listed.

**Merope** (arrived 27/10/1870) in [The Lyttelton Times](#), 28/10/1870, p 2 and 29/10/1870, p 2

**Merope** (09/06/1871-25/08/1871) in [Emigration to Canterbury: shipping lists, 1856-1874 \(digitised version\)](#)

"Shipping", [The Lyttelton Times](#), 22 August 1871, p 2. Assisted immigrants listed, followed by an analysis of their trades. Note it is published in newspaper prior to arrival of ship.

"Shipping", [The Lyttelton Times](#), 26 August 1871, p 2. Cabin passengers listed. Account of arrival and the captain's report of the voyage.

**Merope** (arrived 03/08/1872) in [The Lyttelton Times](#), 05/08/1872, p 2

**Merope** (arrived 31/10/1873) in [The Lyttelton Times](#), 01/11/1873, p 2

**Merope** (arrived 27/09/1874) in [The Lyttelton Times](#), 28/09/1874, p 2

**Merope** (arrived 25/09/1875) in [The Lyttelton Times](#), 27/09/1875, p 2

**Merope** (28/06/1876-26/09/1876) in [The Lyttelton Times](#), 29/09/1876, p 2

**Merope** (15/05/1877-09/08/1877) in [The Lyttelton Times](#), 10/08/1877, p 2

**Merope** (16/04/1878-31/07/1878) in [The Lyttelton Times](#), 01/08/1878, p 2

**Merope**(arrived 26/07/1879) in [The Lyttelton Times](#), 28/07/1879, p 4

**Mersey** (29/05/1862-26/09/1862) in [Emigration to Canterbury: shipping lists, 1856-1874 \(digitised version\)](#)

"List of government emigrants per Mersey", [The Lyttelton Times](#), 27 September 1862, p 3. Government immigrants listed.

"Shipping Intelligence" [The Lyttelton Times](#), 27 September 1862, p 4. Cabin, second cabin and steerage passengers listed.

**Metropolis** (02/03/1863-16/06/1863) in [The Lyttelton Times](#), 17/06/1863, p 4 Also in [The Press](#), 08/05/1863, p 3 and 17/06/1863, p 2

**Middlesex** (arrived 1840) in Ward, L. E. [Early Wellington](#), p 74

**Midlothian** (21/06/1851-08/10/1851) in [Canterbury jubilee celebrations : Old Colonists' Committee... passenger lists of Canterbury Association ships](#)  
Also in [The Lyttelton Times](#), 11/10/1851, p 4

**Minerva** (arrived 08/10/1847) in Eadie, F. [Roll](#)

**Minerva** (12/10/1852-02/02/1853) in [Canterbury jubilee celebrations : Old Colonists' Committee... passenger lists of Canterbury Association ships](#)  
Also in [The Lyttelton Times](#), 05/02/1853, p 6, account of voyage p 7

**Minerva** (arrived 16/08/1859) in [The Lyttelton Times](#), 17/08/1859, p 4

- Minerva** (arrived 27/02/1861) in [The Lyttelton Times](#), 02/03/1861, p 4
- Mirage** (arrived 05/09/1864) in [The Lyttelton Times](#), 06/09/1864, p 4
- Monarch** (arrived 29/10/1854) in Rutherford, J. & Skinner, W. H. [The establishment of the New Plymouth settlement in New Zealand, 1841-1843](#), Chapter 14
- Montmorency** (arrived 14/05/1858 in [The Lyttelton Times](#), 19/05/1858, p 4
- Mooltan** (12/09/1849-26/12/1849) in Hocken, T. M. [Contributions to the early history of New Zealand \(Otago\)](#), Appendix F
- Mountain Maid** (arrived 17/05/1853) in [The Lyttelton Times](#), 21/05/1853, p 6
- Mountain Maid** (arrived 14/01/1854) in [The Lyttelton Times](#), 21/01/1854, p 6
- Mountain Maid** (arrived 28/10/1854) in [The Lyttelton Times](#), 18/11/1854, p 4
- Mountain Maid** (arrived 08/03/1855) in [The Lyttelton Times](#), 10/03/1855, p 4
- Mountain Maid** (arrived 08/07/1855) in [The Lyttelton Times](#), 11/07/1855, p 3
- Mountain Maid** (arrived 03/12/1855) in [The Lyttelton Times](#), 05/12/1855, p 6
- Mountain Maid** (arrived 23/12/1855) in [The Lyttelton Times](#), 26/12/1855, p 4
- Mountain Maid** (arrived 09/05/1856) in [The Lyttelton Times](#), 14/05/1856, p 6
- Mountain Maid** (arrived 08/06/1856) in [The Lyttelton Times](#), 11/06/1856, pp 5-6
- Mountain Maid** (arrived 05/10/1856) in [The Lyttelton Times](#), 18/10/1856, p 7
- Mountain Maid** (arrived 09/11/1856) in [The Lyttelton Times](#), 12/11/1856, p 6
- Mountain Maid** (arrived 26/11/1856) in [The Lyttelton Times](#), 29/11/1856, p 6
- Mountain Maid** (arrived 02/03/1857) in [The Lyttelton Times](#), 04/03/1857, p 6
- Mountain Maid** (arrived 07/07/1857) in [The Lyttelton Times](#), 08/07/1857, p 4
- Mountain Maid** (arrived 24/10/1857) in [The Lyttelton Times](#), 28/10/1857, p 4
- Mountain Maid** (arrived 04/03/1858) in [The Lyttelton Times](#), 06/03/1858, p 5
- Mountain Maid** (arrived 28/11/1858) in [The Lyttelton Times](#), 01/12/1858, p 4
- Munford** (arrived 07/06/1855) in [The Lyttelton Times](#), 09/06/1855, p 5
- Mystery** (arrived 1852) in Ward, L. E. [Early Wellington](#), p 160
- Mystery** (arrived 29/03/1859) in [The Lyttelton Times](#), 30/03/1859, p 5
- Mystery** (25/10/1861-07/01/1862) in [Emigration to Canterbury: shipping lists, 1856-1874 \(digitised version\)](#)  
“Shipping Intelligence” [The Lyttelton Times](#), 8 January 1862, p 4. Account of arrival



and voyage. Provincial government immigrants listed plus an analysis of their trades. "Shipping Intelligence" [The Lyttelton Times](#), 11 January 1862, p 4. Cabin, second cabin and steerage passengers listed.

Also in *The Press*, 11/01/1862, p 6

**Nankin** (arrived 1841) in Eadie, F. [Roll of early settlers and descendants in the Auckland Province prior to the end of 1852](#)

**Nankin** (arrived 1849) in Eadie, F. [Roll of early settlers and descendants in the Auckland Province prior to the end of 1852](#)

**Nautilus** (arrived 27/02/1863) in [The Lyttelton Times](#), 28/02/1863, p 4

**Navarino** (arrived 1840) in Ward, L. E. [Early Wellington](#), p 74

**Necromancer** (arrived 10/02/1853) in [The Lyttelton Times](#), 12/02/1853, p 6

**Necromancer** (arrived 25/05/1853) in [The Lyttelton Times](#), 28/05/1853, p 6

**Necromancer** (arrived 21/07/1853) in [The Lyttelton Times](#), 23/07/1853, p 6

**Necromancer** (arrived 17/08/1853) in [The Lyttelton Times](#), 20/08/1853, p 4

**Necromancer** (arrived 29/11/1853) in [The Lyttelton Times](#), 03/12/1853, p 6

**Necromancer** (arrived 10/01/1854) in [The Lyttelton Times](#), 14/01/1854, p 6

**Nelson** (arrived 07/04/1854) in [The Lyttelton Times](#), 15/04/1854, p 6

**Nelson** (arrived 23/07/1854) in [The Lyttelton Times](#), 29/07/1854, p 6

**Nelson** (arrived 27/08/1854) in [The Lyttelton Times](#), 30/08/1854, p 2

**Nelson** (arrived 10/05/1854) in [The Lyttelton Times](#), 13/05/1854, p 6

**Nelson** (arrived 13/10/1854) in [The Lyttelton Times](#), 14/10/1854, p 6

**Nelson** (arrived 26/11/1854) in [The Lyttelton Times](#), 29/11/1854, p 5

**Nelson** (arrived 06/01/1855) in [The Lyttelton Times](#), 10/01/1855, p 4

**Nelson** (arrived 15/02/1855) in [The Lyttelton Times](#), 17/02/1855, p 5

**Nelson** (arrived 15/03/1855) in [The Lyttelton Times](#), 17/03/1855, p 5

**Nelson** (arrived 14/04/1855) in [The Lyttelton Times](#), 18/04/1855, p 5

**Nelson** (arrived 22/04/1855) in [The Lyttelton Times](#), 25/04/1855, p 5

**New Era** (arrived 30/07/1855) in [The Lyttelton Times](#), 01/08/1855, p 5

**New York Packet** (arrived 1842) in Ward, L. E. [Early Wellington](#), p 115

**New Zealand** (04/07/1842-04/11/1842) in Neale, J. [Pioneer passengers to Nelson by sailing ship, March 1842-June 1843](#), p 160

**New Zealander** (arrived 1820) in Eadie, F. [Roll of early settlers and descendants in the Auckland Province prior to the end of 1852](#)

**New Zealander** (arrived 02/03/1840) in Eadie, F. [Roll of early settlers and descendants in the Auckland Province prior to the end of 1852](#)

**Nimrod** (arrived 1837) in Eadie, F. [Roll of early settlers and descendants in the Auckland Province prior to the end of 1852](#)

**Nimrod** (arrived 1840) in Eadie, F. [Roll of early settlers and descendants in the Auckland Province prior to the end of 1852](#)

**Nimrod** (arrived 1840) in Ward, L. E. [Early Wellington](#), p 74

**Norma** (18/12/1871-27/05/1871) in [The Lyttelton Times](#), 29/05/1871, p 2

**Norman Morrison** (arrived 19/09/1854) in [The Lyttelton Times](#), 20/09/1854, p 4

**Northern Monarch** (arrived 01/02/1879) in [The Lyttelton Times](#), 03/02/1879, p 4

**North Star** (arrived 1843) in Ward, L. E. [Early Wellington](#), p 118

**North Star** (arrived 22/03/1845) in Eadie, F. [Roll of early settlers and descendants in the Auckland Province prior to the end of 1852](#)

**Northfleet** (arrived 13/01/1854) in [The Lyttelton Times](#), 14/01/1854, p 6

**Northampton** (arrived 6/06/1874) in [The Lyttelton Times](#), 08/06/1874, p 4 No passenger list but the names of those who died during the voyage, their ages and cause of death are given. The ship was quarantined on arrival at Lyttelton.

**Nourmahal** (arrived 16/06/1858) in [The Lyttelton Times](#), 19/06/1858, p 4

**Novelty** (arrived 1842) in Eadie, F. [Roll of early settlers and descendants in the Auckland Province prior to the end of 1852](#)

**Oamaru** (arrived 12/01/1884) in [The Lyttelton Times](#), 14/01/1884, p 4

**Oceania** (arrived 17/04/1853) in [The Lyttelton Times](#), 23/04/1853, p 6

**Ocean Queen** (arrived 26/10/1856) in [The Lyttelton Times](#), 29/10/1856, p 6

**Ocean Queen** (arrived 05/02/1858) in [The Lyttelton Times](#), 10/02/1858, p 4

**Ocean Queen** (arrived 07/07/1858) in [The Lyttelton Times](#), 10/07/1858, p 4

**Olive** (21/04/1878-07/08/1878) in [The Lyttelton Times](#), 08/08/1878, p 2

**Oliver Lang** (arrived 31/01/1857) in [The Lyttelton Times](#), 04/02/1857, p 8

**Olympus** (arrived 08/12/1840) in Eadie, F. [Roll of early settlers and descendants in the Auckland Province prior to the end of 1852](#)

**Olympus** (12/1840-05/1841) in Ward, L. E. [Early Wellington](#), p 86

- Olympus** (16/06/1842-28/10/1842) in Neale, J. [\*Pioneer passengers to Nelson by sailing ship, March 1842-June 1843\*](#), p 159
- Onkaparinga** (arrived 25/09/1854) in [\*The Lyttelton Times\*](#), 04/10/1854, p 5
- Onkaparinga** (arrived 13/03/1855) in [\*The Lyttelton Times\*](#), 14/03/1855 supplement
- Opawa** (arrived 16/04/1877) in [\*The Lyttelton Times\*](#), 17/04/1877, p 2
- Opawa** (arrived 03/01/1878) in [\*The Lyttelton Times\*](#), 04/01/1878, p 2
- Opawa** (arrived 07/12/1878) in [\*The Lyttelton Times\*](#), 09/12/1878, p 2
- Orari** (12/09/1875-12/01/1876) in [\*The Lyttelton Times\*](#), 14/01/1876, p 2
- Orari** (arrived 26/07/1879) in [\*The Lyttelton Times\*](#), 28/07/1879, p 4
- Oriana** (29/03/1875-24/07/1875) in [\*The Lyttelton Times\*](#), 26 July 1875, p 2
- Oriental** (15/09/1839-31/01/1840) in Ward, L. E. [\*Early Wellington\*](#), p 25
- Oriental** (arrived 31/01/1840) in Eadie, F. [\*Roll of early settlers and descendants in the Auckland Province prior to the end of 1852\*](#)
- Oriental** (22/06/1841-07/11/1841) in Rutherford, J. & Skinner, W. H. [\*The establishment of the New Plymouth settlement in New Zealand, 1841-1843\*](#), Chapter
- Oriental** (arrived 26/11/1851) in [\*The Lyttelton Times\*](#), 29/11/1851, p 5
- Oriental** (arrived 12/04/1856) in [\*The Lyttelton Times\*](#), 16/04/1856, p 6
- Oriental** (11/06/1857-16/11/1857) in [\*The Lyttelton Times\*](#), 18/11/1857, p 4
- Oriental** (01/11/1858-17/02/1859) in [\*The Lyttelton Times\*](#), 19/02/1859, p 4
- Oriental Queen** (17/10/1849) in Eadie, F. [\*Roll of early settlers and descendants in the Auckland Province prior to the end of 1852\*](#)
- Orontes** (arrived 1840) in Eadie, F. [\*Roll of early settlers and descendants in the Auckland Province prior to the end of 1852\*](#)
- Orthes** (20/11/1878-16/02/1879) in [\*The Lyttelton Times\*](#), 17/02/1879, p 4
- Osprey** (arrived 07/05/1842) in Eadie, F. [\*Roll of early settlers and descendants in the Auckland Province prior to the end of 1852\*](#)
- Otaki** (arrived 08/02/1876) in [\*The Lyttelton Times\*](#), 09/02/1876, p 2
- Palala** (03/01/1880-14/04/1880) in [\*The Lyttelton Times\*](#), 15/04/1880, p 4
- Palinurus** (arrived 17/07/1857) in [\*The Lyttelton Times\*](#), 18/07/1857, p 4
- Pandora** (arrived 08/12/1854) in [\*The Lyttelton Times\*](#), 09/12/1854, p 4
- Pandora** (arrived 18/01/1855) in [\*The Lyttelton Times\*](#), 20/01/1855, p 4

- Paria** (08/01/1867-30/04/1867) in [The Lyttelton Times](#), 01/05/1867, p 2
- Patriot** (arrived 14/08/1836) in Eadie, F. [Roll of early settlers and descendants in the Auckland Province prior to the end of 1852](#)
- Pauline** (arrived 22/05/1852) in [The Lyttelton Times](#), 29/05/1852, p 4
- Pauline** (arrived 03/09/1852) in [The Lyttelton Times](#), 04/09/1852, p 6
- Pekin** (06/08/1849-05/12/1849) in Eadie, F. [Roll of early settlers and descendants in the Auckland Province prior to the end of 1852](#)  
Also in Hocken, T M., [Contributions to the early history of New Zealand \(Otago\)](#), Appendix F
- Pekin** (arrived 07/02/1850) in Rutherford, J. & Skinner, W. H. [The establishment of the New Plymouth settlement in New Zealand, 1841-1843](#), Chapter 14
- Pekin** (26/07/1863-30/11/1863) in [The Lyttelton Times](#), 03/12/1863, p 4
- Penyard Park** (arrived 07/08/1853) in [The Lyttelton Times](#), 13/08/1853, p 7
- Perseverance** (arrived 20/08/1851) in [The Lyttelton Times](#), 23/08/1851, p 4
- Persia** (arrived 21/09/1852) in [Canterbury jubilee celebrations : Old Colonists' Committee... passenger lists of Canterbury Association ships](#)  
Also in [The Lyttelton Times](#), 25/09/1852, p 6
- Pestonjee Bomanjee** (arrived 10/07/1847) in Eadie, F. [Roll of early settlers and descendants in the Auckland Province prior to the end of 1852](#)
- Philip Laing** (23/11/1847-15/04/1848) in Hocken, T M. [Contributions to the early history of New Zealand \(Otago\)](#), Appendix F
- Philip Laing** (arrived 13/02/1857) in [The Lyttelton Times](#), 18/02/1857, p 6
- Phoebe** (16/11/1842-29/03/1843) in Neale, J. [Pioneer passengers to Nelson by sailing ship, March 1842-June 1843](#), p 173  
Also in Rutherford, J. & Skinner, W. H. [The establishment of the New Plymouth settlement in New Zealand, 1841-1843](#), Chapter 14
- Phoebe** (arrived 1843) in Ward, L. E. [Early Wellington](#), p 118
- Phoebe** (arrived 08/07/1857) in [The Lyttelton Times](#), 11/07/1857, p 4
- Phoebe** (arrived 25/08/1857) in [The Lyttelton Times](#), 29/08/1857, p 5
- Phoebe** (08/12/1863) in [The Lyttelton Times](#), 10/12/1863, p 4
- Phoebe Dunbar** (04/07/1850-24/10/1850) in Hocken, T M. [Contributions to the early history of New Zealand \(Otago\)](#), Appendix F
- Phoebe Dunbar** (arrived 15/10/1850) Rutherford, J. & Skinner, W. H. [The establishment of the New Plymouth settlement in New Zealand, 1841-1843](#), Chapter 14

- Phoebe Dunbar** (arrived 1850) in Ward, L. E. [\*Early Wellington\*](#), p 154
- Pilgrim** (arrived 1849) in Eadie, F. [\*Roll of early settlers and descendants in the Auckland Province prior to the end of 1852\*](#)
- Planter** (arrived 1840) in Eadie, F. [\*Roll of early settlers and descendants in the Auckland Province prior to the end of 1852\*](#)
- Platina** (arrived 13/0-9/1840) in Eadie, F. [\*Roll of early settlers and descendants in the Auckland Province prior to the end of 1852\*](#)
- Pleiades** (arrived 28/12/1872) in [\*The Lyttelton Times\*](#), 30/12/1872, p 2
- Pleiades** (arrived 16/12/1874) in [\*The Lyttelton Times\*](#), 17/12/1874, p 2
- Poitiers** (07/02/1850-04/09/1850) in Hocken, T M. [\*Contributions\*](#), Appendix F
- Poitiers** (arrived 30/06/1850) in Rutherford, J. & Skinner, W. H. [\*The establishment of the New Plymouth settlement in New Zealand, 1841-1843\*](#), Chapter 14
- Polly** (arrived 07/04/1856) in [\*The Lyttelton Times\*](#), 09/04/1856, p 6
- Porcupine** (arrived 1832) in Eadie, F. [\*Roll of early settlers and descendants in the Auckland Province prior to the end of 1852\*](#)
- Portentia** (arrived 08/1838) in Eadie, F. [\*Roll of early settlers and descendants in the Auckland Province prior to the end of 1852\*](#)
- Portentia** (arrived 1840) in Eadie, F. [\*Roll of early settlers and descendants in the Auckland Province prior to the end of 1852\*](#)
- Porter** (arrived 29/05/1841) in Eadie, F. [\*Roll of early settlers and descendants in the Auckland Province prior to the end of 1852\*](#)
- Port Glasgow** (arrived 20/02/1857) in [\*The Lyttelton Times\*](#), 21/02/1857, p 6
- Prima Donna** (arrived 07/03/1854) in [\*The Lyttelton Times\*](#), 11/03/1854, p 6
- Prima Donna** (arrived 22/08/1854) in [\*The Lyttelton Times\*](#), 23/08/1854, p 1
- Prima Donna** (arrived 25/06/1856) in [\*The Lyttelton Times\*](#), 25/06/1856, p 6
- Prima Donna** (arrived 27/05/1857) in [\*The Lyttelton Times\*](#), 30/05/1857, p 7
- Prince Alfred** (arrived 06/12/1863) in [\*The Lyttelton Times\*](#), 08/12/1863, p 4
- Prince of Wales** (02/09/1842-31/12/1842) in Neale, J. [\*Pioneer\*](#), p 167
- Prince of Wales** (arrived 1842) in Ward, L. E. [\*Early Wellington\*](#), p 115
- Prince Rupert** (arrived 1841) in Ward, L. E. [\*Early Wellington\*](#), p 94
- Pumunga** (arrived 1840) in Eadie, F. [\*Roll of early settlers and descendants in the Auckland Province prior to the end of 1852\*](#)

**Punjab** (arrived 20/09/1873) in [The Lyttelton Times](#), 22/09/1873, p 2. No passenger list then but passengers hospitalised listed (names and ages) 29/09/1873, p 2

**Pussy Hall** (arrived 1840) in Eadie, F. [Roll of early settlers and descendants in the Auckland Province prior to the end of 1852](#)

**Queen** (arrived 25/08/1858) in [The Lyttelton Times](#), 28/08/1858, p 3

**Queen** (arrived 16/09/1858) in [The Lyttelton Times](#), 18/09/1858, p 4

**Queen** (arrived 07/11/1858) in [The Lyttelton Times](#), 10/11/1858, p 6

**Queen of Perth** (arrived 02/03/1857) in [The Lyttelton Times](#), 04/03/1857, p 6

**Queen of Perth** (arrived 18/07/1857) in [The Lyttelton Times](#), 22/07/1857, p 4

**Queen of the Isles** (arrived 22/04/1856) in [The Lyttelton Times](#), 23/04/1856, p 5

**Queen of the Mersey** (arrived 19/10/1862) in [The Lyttelton Times](#), 22/10/1862, p 4

**Queen of the South** (arrived 23/05/1855) in [The Lyttelton Times](#), 26/05/1855, p 4

**Rachel** (03/12/1864-26/03/1865) in [The Lyttelton Times](#), 28/03/1865, p 4

**Raiatea** (arrived 10/01/1838) in Eadie, F. [Roll of early settlers and descendants in the Auckland Province prior to the end of 1852](#)

**Rainbow** (arrived 09/06/1828) in Eadie, F. [Roll of early settlers and descendants in the Auckland Province prior to the end of 1852](#)

**Rakaia** (arrived 23/11/1866) in [The Lyttelton Times](#), 26/11/1866, p 2

**Rakaia** (arrived 26/04/1874) in [The Lyttelton Times](#), 27/04/1874, p 2

**Rakaia** (arrived 7/02/1875) in [The Lyttelton Times](#), 8/02/1875, p 2 Saloon passengers listed, an account of voyage, those who died on board named, plus the captain's report.

**Rakaia** (arrived 2/09/1882) in [The Lyttelton Times](#), 4/09/1882, p 4.

**Rakaia** (arrived 26/04/1874) in [The Lyttelton Times](#), 27/04/1874, p 2

**Ralph Bernal** (arrived 10/12/1847) in Rutherford, J. & Skinner, W. H. [The establishment of the New Plymouth settlement in New Zealand, 1841-1843](#), Chapter

**Ralph Bernal** (arrived 09/01/1848) in Eadie, F. [Roll of early settlers and descendants in the Auckland Province prior to the end of 1852](#)

**Ramillies** (arrived 05/08/1847) in Eadie, F. [Roll of early settlers and descendants in the Auckland Province prior to the end of 1852](#)

**Ramsay** (27/03/1870-17/06/1870) in [Emigration to Canterbury: shipping lists, 1856-1874 \(digitised version\)](#)

“Shipping” [The Lyttelton Times](#), 18 June 1870, p 2. Saloon passengers listed. Arrival

and account of the voyage plus Captain Hunt's report, a testimonial from the passengers for him followed by a list of assisted government immigrants.

**Randolph** (08/09/1850-16/12/1850) in [Canterbury jubilee celebrations : Old Colonists' Committee... passenger lists of Canterbury Association ships](#)  
Also in [The Lyttelton Times](#), 11/01/1851, p 2

**Rangitikei** (arrived 11/12/1876) in [The Lyttelton Times](#), 12/12/1876, p 2

**Rangitikei** (arrived 09/11/1877) in [The Lyttelton Times](#), 10/11/1877, p 2

**Rattlesnake, HMS** in Eadie, F. [Roll of early settlers and descendants in the Auckland Province prior to the end of 1852](#)

**Raven** (arrived 11/12/1858) in [The Lyttelton Times](#), 15/12/1858, p 4

**Raymond** (arrived 29/08/1844) in Eadie, F. [Roll of early settlers and descendants in the Auckland Province prior to the end of 1852](#)

**Rectus** (arrived 1839) in Eadie, F. [Roll of early settlers and descendants in the Auckland Province prior to the end of 1852](#)

**Red Gauntlet** (22/02/1879-17/06/1879) in [The Press](#), 18/06/1879, p 2

**Regia** (arrived 1842) in Ward, L. E. [Early Wellington](#), p 115

**Regina** (arrived 03/03/1841) in Rutherford, J. & Skinner, W. H. [The establishment of the New Plymouth settlement in New Zealand, 1841-1843](#), Chapter 14

**Regina** (arrived 15/11/1858) in [The Lyttelton Times](#), 17/11/1858, p 4

**Regina** (arrived 04/12/1859) in [The Lyttelton Times](#), 07/12/1859, p 4

**Reindeer** (arrived 11/10/1855) in [The Lyttelton Times](#), 31/10/1855, p 5

**Reine de Paix** (arrived 16/06/1839) in Eadie, F. [Roll of early settlers and descendants in the Auckland Province prior to the end of 1852](#)

**Reliance** (arrived 04/08/1858) in [The Lyttelton Times](#), 07/08/1858, p 4

**Reliance** (arrived 13/09/1858) in [The Lyttelton Times](#), 15/09/1858, p 4

**Reliance** (arrived 24/12/1858) in [The Lyttelton Times](#), 29/12/1858, p 7

**Rimutaka** (arrived 08/03/1885) in [The Lyttelton Times](#), 10/03/1885, p 4

**Resolution** (arrived 15/08/1853) in [The Lyttelton Times](#), 20/08/1853, p 4

**Retriever** (arrived 30/01/1856) in [The Lyttelton Times](#), 31/01/1856, p 7

**Return** (arrived 19/08/1851) in [The Lyttelton Times](#), 25/10/1851, p 5

**Return** (arrived 21/09/1851) in [The Lyttelton Times](#), 27/09/1851, p 5

**Return** (arrived 01/09/1852) in [The Lyttelton Times](#), 04/09/1852, p 6

**Return** (arrived 02/07/1854) in [The Lyttelton Times](#), 08/07/1854, p 6

**Return** (arrived 09/08/1854) in [The Lyttelton Times](#), 12/08/1854, p 7

**Rhea Sylvia** (15/01/1861-06/05/1861) in [Emigration to Canterbury: shipping lists, 1856-1874 \(digitised version\)](#)

“Shipping News”, [The Lyttelton Times](#), 8 May 1861, p 4. Cabin , second cabin and third cabin passengers listed. Description of the ship. Account of the voyage. Provincial government immigrants listed. Analysis of their trades and a testimonial for Captain Charles Evans from the passengers.

**Richard Dart** (arrived 1849) in Eadie, F. [Roll of early settlers and descendants in the Auckland Province prior to the end of 1852](#)

**Robert and Betty** (arrived 05/08/1857) in [The Lyttelton Times](#), 08/08/1857, p 4

**Robert Small** (06/10/1859-29/01/1860) in [Emigration to Canterbury: shipping lists, 1856-1874 \(digitised version\)](#)

“Shipping News”, [The Lyttelton Times](#), 1 February 1860, p 4. Cabin and steerage passengers listed. Account of voyage followed by list of Provincial Government immigrants. Analysis of their trades plus a testimonial for Captain Darke from the passengers. One birth and one death during the voyage is also recorded.

**Rock City** (arrived 24/07/1855) in Rutherford, J. & Skinner, W. H. [The establishment of the New Plymouth settlement in New Zealand, 1841-1843](#), Chapter 14

**Rolla** (arrived 24/07/1853) in [The Lyttelton Times](#), 30/07/1853, p 6

**Roman Emperor** (arrived 27/01/1860) in [The Lyttelton Times](#), 25/01/1860, p 4

**Roman Emperor** (22/12/1862-30/03/1863) in [The Lyttelton Times](#), 01/04/1863, p 4

**Rosanna** (arrived 04/11/1826) in Eadie, F. [Roll of early settlers and descendants in the Auckland Province prior to the end of 1852](#)

**Rosetta Joseph** (arrived 01/12/1847) in Eadie, F. [Roll of early settlers and descendants in the Auckland Province prior to the end of 1852](#)

**Roulton** (arrived 1842) in Eadie, F. [Roll of early settlers and descendants in the Auckland Province prior to the end of 1852](#)

**Rover** (arrived 1836) in Eadie, F. [Roll of early settlers and descendants in the Auckland Province prior to the end of 1852](#)

**Royal Bride** (27/08/1859-24/12/1859) in [The Lyttelton Times](#), 28/12/1859, p 4

**Royal Merchant** (arrived 1840) in Ward, L. E. [Early Wellington](#), p 74

**Royal Stuart** (09/10/1854-04/01/1855) in [The Lyttelton Times](#), 06/01/1855, p 4

**Royal Stuart** (02/07/1861-08/10/1861) in [Emigration to Canterbury: shipping lists, 1856-1874 \(digitised version\)](#)

“Shipping Intelligence”, [The Lyttelton Times](#), 9 October 1861, p 4. Saloon and second



cabin passengers. Account of arrival and voyage followed by list of Government immigrants and analysis of their trades.

**Saghalien** (arrived 22/11/1847) in Eadie, F. [Roll of early settlers and descendants in the Auckland Province prior to the end of 1852](#)

**St Leonards** (arrived 23/09/1872) in [The Lyttelton Times](#), 23/09/1872, p 2

**Salopian** (arrived 25/11/1851) in [The Lyttelton Times](#), 29/11/1851, p 4

**Salopian** (arrived 29/12/1851) in [The Lyttelton Times](#), 03/01/1852, p 4

**Salopian** (arrived 01/07/1857) in [The Lyttelton Times](#), 04/07/1857, p 4

**Salopian** (arrived 15/08/1857) in [The Lyttelton Times](#), 19/08/1857, p 5

**Salopian** (arrived 26/02/1858) in [The Lyttelton Times](#), 03/03/1858, p 4

**Salopian** (arrived 16/08/1858) in [The Lyttelton Times](#), 18/08/1858, p 4

**Salopian** (arrived 28/11/1858) in [The Lyttelton Times](#), 01/12/1858, p 4

**Samarang** (26/03/1852-31/07/1852) in [Canterbury jubilee celebrations : Old Colonists' Committee... passenger lists of Canterbury Association ships](#)

**Samarang** (arrived 31/07/1852) in [The Lyttelton Times](#), 07/08/1852, p 6

**Sandford** (arrived 07/1856) in Rutherford, J. & Skinner, W. H. [The establishment of the New Plymouth settlement in New Zealand, 1841-1843](#), Chapter 14

**Sarah** (arrived 1848) in Eadie, F. [Roll of early settlers and descendants in the Auckland Province prior to the end of 1852](#)

**Sarah** (arrived 10/05/1856) in [The Lyttelton Times](#), 14/05/1856, p 6

**Sarah** (arrived 20/09/1858) in [The Lyttelton Times](#), 22/09/1858, p 4

**Scotia** (arrived 1842) in Ward, L. E. [Early Wellington](#), p 115

**Sea Bird** (arrived 1852) in Ward, L. E. [Early Wellington](#), p 160

**Sea Bird** (arrived 13/06/1852 in [The Lyttelton Times](#), 19/06/1852, p 4

**Sea Bird** (arrived 14/12/1852 in [The Lyttelton Times](#), 18/12/1852, p 6

**Sea Serpent** (arrived 13/07/1855 in [The Lyttelton Times](#), 14/07/1855, p 3

**Sea Serpent** (arrived 13/11/1855 in [The Lyttelton Times](#), 14/11/1855, p 4

**Sebastopol** (02/09/1861-14/12/1861) in [Emigration to Canterbury: shipping lists, 1856-1874 \(digitised version\)](#)

“Shipping Intelligence”, [The Lyttelton Times](#), 18 December 1861, p 4. Cabin and steerage passengers listed. Account of arrival and voyage. Provincial government

immigrants listed.

Also in *The Press*, 7/12/1861, p 5 and 14/12/1861, p 5

**Sebastopol** (arrived 21/05/1863) in *The Press*, 14/04/1863, p 3 and 23/05/1863, p 4

**Shamrock** (arrived 01/07/1841) in Eadie, F. [Roll of early settlers and descendants in the Auckland Province prior to the end of 1852](#)

**Shamrock** (arrived 1843) in Eadie, F. [Roll of early settlers and descendants in the Auckland Province prior to the end of 1852](#)

**Shepherdess** (arrived 19/04/1853) in [The Lyttelton Times](#), 23/04/1853, p 6

**Shepherdess** (arrived 23/07/1853) in [The Lyttelton Times](#), 30/07/1853, p 6

**Shepherdess** (arrived 26/08/1853) in [The Lyttelton Times](#), 27/08/1853, p 6

**Shepherdess** (arrived 29/12/1854) in [The Lyttelton Times](#), 30/12/1854, p 4

**Shepherdess** (arrived 12/12/1856) in [The Lyttelton Times](#), 13/12/1856, p 6

**Siberia** (arrived 21/02/1870) in [The Lyttelton Times](#), 22/02/1870, p 2

**Simlah** (arrived 1851) in Ward, L. E. [Early Wellington](#), p 160

**Simlah** (arrived 06/08/1853) in Rutherford, J. & Skinner, W. H. [The establishment of the New Plymouth settlement in New Zealand, 1841-1843](#), Chapter 14

**Sir Charles Forbes** (01/05/1842-22/08/1842) in Neale, J. [Pioneer passengers to Nelson by sailing ship, March 1842-June 1843](#), p 154

**Sir Chas. Forbes** (arrived 22/08/1842) in Eadie, F. [Roll of early settlers and descendants in the Auckland Province prior to the end of 1852](#)

**Sir Edward Paget** (arrived 18/12/1850) in Eadie, F. [Roll of early settlers and descendants in the Auckland Province prior to the end of 1852](#)

**Sir Edward Paget** (arrived 26/01/1851) in Rutherford, J. & Skinner, W. H. [The establishment of the New Plymouth settlement in New Zealand, 1841-1843](#), Chapter 14

**Sir Edward Paget** (arrived 16/08/1853) in Rutherford, J. & Skinner, W. H. [The establishment of the New Plymouth settlement in New Zealand, 1841-1843](#), Chapter 14

**Sir Edward Paget** (arrived 02/07/1856) in [The Lyttelton Times](#), 05/07/1856, p 7

**Sir Geo Osborne** (arrived 25/03/1826) in Eadie, F. [Roll of early settlers and descendants in the Auckland Province prior to the end of 1852](#)

**Sir George Pollock** (arrived 10/11/1851) in [The Lyttelton Times](#), 15/11/1851, p 4

**Sir George Pollock** (17/07/1851-10/11/1851) in [Canterbury jubilee celebrations : Old Colonists' Committee... passenger lists of Canterbury Association ships](#)  
Also in [The Lyttelton Times](#), 15/11/1851, p 4

**Sir George Seymour** (arrived 25/11/1847) in Eadie, F. [Roll of early settlers and descendants in the Auckland Province prior to the end of 1852](#)

**Sir George Seymour** (08/09/1850-17/12/1850) in [Canterbury jubilee celebrations : Old Colonists' Committee... passenger lists of Canterbury Association ships](#)

**Sir Harry Smith** (arrived 14/09/1851) in [The Lyttelton Times](#), 20/09/1851, p 4

**Sir John Falstaff** (arrived 1841) in Ward, L. E. [Early Wellington](#), p 86

**Sir Ralph Abercrombie** (01/06/1866-04/09/1866) in [The Lyttelton Times](#), 06/09/1866, p 2

**Sir Robert Peel** (arrived 04/01/1847) in Eadie, F. [Roll of early settlers and descendants in the Auckland Province prior to the end of 1852](#)

**Sir Robert Sale** (arrived 11/10/1847) in Eadie, F. [Roll of early settlers and descendants in the Auckland Province prior to the end of 1852](#)

**Sisters** (arrived 13/11/1851) in [The Lyttelton Times](#), 15/11/1851, p 4

**Slains Castle** (arrived 29/01/1841) in Ward, L. E. [Early Wellington](#), p 76

**Slains Castle** (arrived 25/01/1841) in Eadie, F. [Roll of early settlers and descendants in the Auckland Province prior to the end of 1852](#)

**Solent** (arrived 08/09/1857) in [The Lyttelton Times](#), 12/09/1857, p 5

**Sophia Pate** (arrived 30/06/1841) in Eadie, F. [Roll of early settlers and descendants in the Auckland Province prior to the end of 1852](#)

**Sorcerer** (arrived 1819) in Eadie, F. [Roll of early settlers and descendants in the Auckland Province prior to the end of 1852](#)

**Soukar** (arrived 24/01/1876) in [The Lyttelton Times](#), 25/01/1876, p 2

**Soukar** (19/02/1878-22/06/1878) in [The Press](#), 24/06/1878, p 2

**Soukar** (27/02/1879-18/06/1879) in [The Press](#), 19/06/1879, p 2

**Southern Cross** (arrived 05/11/1855) in [The Lyttelton Times](#), 07/11/1855, p 5

**Southern Cross** (arrived 11/12/1856) in [The Lyttelton Times](#), 13/12/1856, p 6

**Southern Cross** (arrived 30/06/1857) in [The Lyttelton Times](#), 04/07/1857, p 6

**Southesk** (26/09/1879-28/12/1879) in "Shipping", [The Lyttelton Times](#), 29/12/1879, p 4. Saloon passengers listed, 24 second cabin and 208 third cabin passengers not listed. Also in [Southesk weekly news](#), p 59

- Spec** (arrived 10/05/1857) in [\*The Lyttelton Times\*](#), 13/05/1857, p 7
- Speculator** (arrived 27/07/1841) in Rutherford, J. & Skinner, W. H. [\*The establishment of the New Plymouth settlement in New Zealand, 1841-1843\*](#), Chapter 14
- Sporting Lass** (arrived 15/10/1855) in Rutherford, J. & Skinner, W. H. [\*The establishment of the New Plymouth settlement in New Zealand, 1841-1843\*](#), Chapter 14
- Sporting Lass** (arrived 15/04/1858) in Rutherford, J. & Skinner, W. H. [\*The establishment of the New Plymouth settlement in New Zealand, 1841-1843\*](#), Chapter 14
- Spray** (arrived 29/10/1855) in [\*The Lyttelton Times\*](#), 31/10/1855, p 4
- Spray** (arrived 26/08/1856) in [\*The Lyttelton Times\*](#), 27/08/1856, p 4
- Spray** (arrived 26/12/1856) in [\*The Lyttelton Times\*](#), 27/12/1856, p 4
- Spray** (arrived 13/08/1857) in [\*The Lyttelton Times\*](#), 15/08/1857, p 4
- Spray** (arrived 05/12/1857) in [\*The Lyttelton Times\*](#), 05/12/1857, p 4
- Spray** (arrived 09/03/1858) in [\*The Lyttelton Times\*](#), 10/03/1858, p 4
- Spray** (arrived 13/04/1858) in [\*The Lyttelton Times\*](#), 17/04/1858, p 4
- Spray** (arrived 02/09/1858) in [\*The Lyttelton Times\*](#), 04/09/1858, p 5
- Spray** (arrived 29/09/1858) in [\*The Lyttelton Times\*](#), 02/10/1858, p 4
- St George** (arrived 25/10/1842) in Eadie, F. [\*Roll of early settlers and descendants in the Auckland Province prior to the end of 1852\*](#)
- St Louis** (arrived 1845) in Eadie, F. [\*Roll of early settlers and descendants in the Auckland Province prior to the end of 1852\*](#)
- St Michael** (arrived 15/05/1823) in Eadie, F. [\*Roll of early settlers and descendants in the Auckland Province prior to the end of 1852\*](#)
- St Michael** (arrived 02/12/1852) in Rutherford, J. & Skinner, W. H. [\*The establishment of the New Plymouth settlement in New Zealand, 1841-1843\*](#), Chapter 14
- St Pauli** (26/12/1842-14/06/1843) in Neale J. [\*Pioneer passengers to Nelson by sailing ship, March 1842-June 1843\*](#), p 175
- Stag** (04/01/1852-17/05/1852) in [\*Canterbury jubilee celebrations : Old Colonists' Committee... passenger lists of Canterbury Association ships\*](#)
- Stag** (arrived 17/05/1852) in [\*The Lyttelton Times\*](#), 22/05/1852, p 4
- Star** (arrived 16/11/1854) in [\*The Lyttelton Times\*](#), 18/11/1854, p 4

- Star** (arrived 10/12/1854) in [The Lyttelton Times](#), 13/12/1854, p 5
- Star** (arrived 12/02/1856) in [The Lyttelton Times](#), 13/02/1856, p 4
- Star** (arrived 30/06/1857) in [The Lyttelton Times](#), 01/07/1857, p 4
- Star of India** (arrived 31/12/1874) in [The Lyttelton Times](#), 01/01/1874, p 2
- Stately** (arrived 16/11/1852) in [The Lyttelton Times](#), 20/11/1852, p 6
- Steadfast** (27/02/1851-09/06/1851) in [Canterbury jubilee celebrations : Old Colonists' Committee... passenger lists of Canterbury Association ships](#)  
Also in [The Lyttelton Times](#), 21/06/1851, p 3. Description of voyage in [The Lyttelton Times](#), 28/06/1851, p 3
- Storm Bird** (09/12/1863) in [The Lyttelton Times](#), 10/12/1863, p 4
- Strathallan** (10/1858-21/01/1859) in [Emigration to Canterbury: shipping lists, 1856-1874 \(digitised version\)](#)  
Also in [The Lyttelton Times](#), 26/01/1859, p 5  
"Shipping News", [The Lyttelton Times](#), 22 January 1859, p 2. Account of arrival. Births and deaths on board.  
"Shipping News", [The Lyttelton Times](#), 26 January 1859, p 5. Chief cabin, second cabin, steerage passengers listed followed by a list of government immigrants listing those who landed at Timaru, those who landed at Lyttelton.
- Success** (arrived 1836) in Eadie, F. [Roll of early settlers and descendants in the Auckland Province prior to the end of 1852](#)
- Supply** (arrived 13/04/1853) in [The Lyttelton Times](#), 16/04/1853, p 6
- Surge** (arrived 28/01/1856) in [The Lyttelton Times](#), 30/01/1856, p 4
- Surprise** (arrived 1841) in Ward, L. E. [Early Wellington](#), p 86
- Surrey** (arrived 11/1835) in Eadie, F. [Roll of early settlers and descendants in the Auckland Province prior to the end of 1852](#)
- Susan** (arrived 1837) in Eadie, F. [Roll of early settlers and descendants in the Auckland Province prior to the end of 1852](#)
- Swan** (arrived 12/02/1858) in [The Lyttelton Times](#), 13/02/1858, p 4
- Sydney Packet** (arrived 1830) in Eadie, F. [Roll of early settlers and descendants in the Auckland Province prior to the end of 1852](#)
- Sydney Packet** (arrived 1838) in Eadie, F. [Roll of early settlers and descendants in the Auckland Province prior to the end of 1852](#)
- Talbot** (11/04/1866-01/08/1866) in [The Lyttelton Times](#), 02/08/1866, p 2
- Taranaki** (arrived 30/10/1856) in [The Lyttelton Times](#), 01/11/1856, p 6
- Taranaki** (arrived 23/03/1857) in [The Lyttelton Times](#), 25/03/1857, p 7

- Taranaki** (arrived 27/06/1857) in [The Lyttelton Times](#), 01/07/1857, p 4
- Taranaki** (arrived 15/10/1857) in [The Lyttelton Times](#), 17/10/1857, p 5
- Taranaki** (arrived 06/01/1858) in [The Lyttelton Times](#), 09/01/1858, p 4
- Tasmania** (04/11/1852-15/03/1853) in [Canterbury jubilee celebrations : Old Colonists' Committee... passenger lists of Canterbury Association ships](#).  
Also in [The Lyttelton Times](#), 19/03/1853, p 6
- Tasmania** (arrived 19/04/1853) in Rutherford, J. & Skinner, W. H. [The establishment of the New Plymouth settlement in New Zealand, 1841-1843](#), Chapter 14
- Thames** (arrived 10/1849) in Eadie, F. [Roll of early settlers and descendants in the Auckland Province prior to the end of 1852](#)
- The Brothers** (arrived 1819) in Eadie, F. [Roll of early settlers and descendants in the Auckland Province prior to the end of 1852](#)
- Theresa** (arrived 19/03/1844) in Rutherford, J. & Skinner, W. H. [The establishment of the New Plymouth settlement in New Zealand, 1841-1843](#), Chapter 14
- Thomas and Henry** (arrived 14/10/1854) in [The Lyttelton Times](#), 14/10/1854, p 3
- Thomas and Henry** (arrived 05/02/1855) in [The Lyttelton Times](#), 07/02/1855, p 4
- Thomas and Henry** (arrived 21/03/1855) in [The Lyttelton Times](#), 24/03/1855, p 4
- Thomas Harrison** (26/05/1842-25/10/1842) in Neale, J. [Pioneer passengers to Nelson by sailing ship, March 1842-June 1843](#), p 156
- Thomas Lord** (arrived 09/12/1847) in Eadie, F. [Roll of early settlers and descendants in the Auckland Province prior to the end of 1852](#)
- Thomas Lowry** (arrived 22/09/1847) in Eadie, F. [Roll of early settlers and descendants in the Auckland Province prior to the end of 1852](#)
- Thomas Lowry** (arrived 1848) in Ward, L. E. [Early Wellington](#), p 151
- Thomas Sparkes** (arrived 1842) in Ward, L. E. [Early Wellington](#), p 115
- Thomas Sparks** (27/07/1842-31/01/1843) in Neale, J. [Pioneer passengers to Nelson by sailing ship, March 1842-June 1843](#), p 171
- Thomas Worthington** (arrived 29/08/1854) in [The Lyttelton Times](#), 30/08/1854, p 2
- Three Brothers** (arrived 1842) in Ward, L. E. [Early Wellington](#), p 115
- Timandra** (02/11/1841-23/02/1842) in Rutherford, J. & Skinner, W. H. [The establishment of the New Plymouth settlement in New Zealand, 1841-1843](#), Chapter 14
- Timandra** (arrived 1842) in Eadie, F. [Roll of early settlers and descendants in the Auckland Province prior to the end of 1852](#)

**Timbo** (arrived 1842) in Eadie, F. [\*Roll of early settlers and descendants in the Auckland Province prior to the end of 1852\*](#)

**Tiptree** (21/10/1863-20/01/1864) in [\*Emigration to Canterbury: shipping lists, 1856-1874 \(digitised version\)\*](#)

“Shipping Intelligence”, [\*The Lyttelton Times\*](#), 21 January 1864, p 4. Cabin passengers listed. Account of arrival and voyage plus a testimonial for Capt. Davis from the passengers. A “List of passengers by the Tiptree” follows.

**Titan** (07/09/1850-17/01/1850) in Hocken, T M. [\*Contributions to the early history of New Zealand \(Otago\)\*](#), Appendix F

**Titan** (arrived 11/05/1854) in [\*The Lyttelton Times\*](#), 13/05/1854, p 6

**Tobago** (arrived 1842) in Ward, L. E. [\*Early Wellington\*](#), p 115

**Tomatin** (arrived 05/1842) in Ward, L. E. [\*Early Wellington\*](#), p 115

**Tomatin** (arrived 1842) in Eadie, F. [\*Roll of early settlers and descendants in the Auckland Province prior to the end of 1852\*](#)

**Tory** (arrived 12/12/1852) in [\*The Lyttelton Times\*](#), 18/12/1852, p 6

**Tory** (arrived 15/03/1854) in [\*The Lyttelton Times\*](#), 18/03/1854, p 6

**Tory** (arrived 12/06/1854) in [\*The Lyttelton Times\*](#), 17/06/1854, p 6

**Tory** (arrived 10/12/1854) in [\*The Lyttelton Times\*](#), 13/12/1854, p 5

**Travancore** (08/12/1850-31/03/1851) in [\*Canterbury jubilee celebrations : Old Colonists' Committee... passenger lists of Canterbury Association ships\*](#)

**Trevelyan** (07/02/1880-13/05/1880) in [\*The Lyttelton Times\*](#), 14/05/1880, p 4

**Triton** (arrived 04/07/1836) in Eadie, F. [\*Roll of early settlers and descendants in the Auckland Province prior to the end of 1852\*](#)

**Triton** (arrived 05/1850) in Eadie, F. [\*Roll of early settlers and descendants in the Auckland Province prior to the end of 1852\*](#)

**Tryphena** (arrived 1842) in Eadie, F. [\*Roll of early settlers and descendants in the Auckland Province prior to the end of 1852\*](#)

**Tudor** (11/06/1865-24/09/1865) in [\*Emigration to Canterbury: shipping lists, 1856-1874 \(digitised version\)\*](#)

“Shipping”, [\*The Lyttelton Times\*](#), 25 September 1865, p 2. Account of arrival and voyage followed by the official list of assisted Government immigrants. Also a summary of their trades and occupations and their country of origin.

“Shipping”, [\*The Lyttelton Times\*](#), 26 September 1865, p 2. Cabin passengers plus more details of voyage.

Also in *The Press*, 23/08/1865, p 2 & 25/09/1865.

**Tuscan** (arrived 09/03/1840) in Eadie, F. [\*Roll of early settlers and descendants in the Auckland Province prior to the end of 1852\*](#)

**Tuscan** (arrived 15/10/1842) in Eadie, F. [\*Roll of early settlers and descendants in the Auckland Province prior to the end of 1852\*](#)

**Twins** (arrived 04/11/1851) in [\*The Lyttelton Times\*](#), 08/11/1851, p 4

**Twins** (arrived 26/01/1852) in [\*The Lyttelton Times\*](#), 31/01/1852, p 5

**Twins** (arrived 06/04/1852) in [\*The Lyttelton Times\*](#), 10/04/1852, p 4

**Twins** (arrived 14/07/1852) in [\*The Lyttelton Times\*](#), 17/07/1852, p 6

**Twins** (arrived 16/08/1852) in [\*The Lyttelton Times\*](#), 21/08/1852, p 6

**Tyne** (03/1841-07/1841) in Ward, L. E. [\*Early Wellington\*](#), p 92

**Tyne** (arrived 22/08/1841) in Eadie, F. [\*Roll of early settlers and descendants in the Auckland Province prior to the end of 1852\*](#)

**Tyne** (arrived 22/11/1841) in Eadie, F. [\*Roll of early settlers and descendants in the Auckland Province prior to the end of 1852\*](#)

**Tyne** (arrived 08/1843) in Rutherford, J. & Skinner, W. H. [\*The establishment of the New Plymouth settlement in New Zealand, 1841-1843\*](#), Chapter 14

**Tyrian** (arrived 1843) in Ward, L. E. [\*Early Wellington\*](#), p 118

**Uira** (arrived 29/10/1857) in [\*The Lyttelton Times\*](#), 31/10/1857, p 4

**Uira** (arrived 26/07/1858) in [\*The Lyttelton Times\*](#), 28/07/1858, p 5

**Uira** (arrived 25/09/1858) in [\*The Lyttelton Times\*](#), 02/10/1858, p 4

**Ullswater** (arrived 1841) in Ward, L. E. [\*Early Wellington\*](#), p 86

**Undine** (arrived 1849) in Ward, L. E. [\*Early Wellington\*](#), p 154

**Union** (arrived 02/05/1843) in Eadie, F. [\*Roll of early settlers and descendants in the Auckland Province prior to the end of 1852\*](#)

**Union** (arrived 04/08/1846) in Eadie, F. [\*Roll of early settlers and descendants in the Auckland Province prior to the end of 1852\*](#)

**Ursula** (arrived 1843) in Ward, L. E. [\*Early Wellington\*](#), p 118

**Velocipede** (arrived 1840) in Eadie, F. [\*Roll of early settlers and descendants in the Auckland Province prior to the end of 1852\*](#)

**Velox** (arrived 25/02/1856) in [\*The Lyttelton Times\*](#), 27/02/1856, p 6

**Venturess** (arrived 1837) in Eadie, F. [\*Roll of early settlers and descendants in the Auckland Province prior to the end of 1852\*](#)



- Venus** (arrived 12/1806) in Eadie, F. [Roll of early settlers and descendants in the Auckland Province prior to the end of 1852](#)
- Vibilia** (arrived 01/03/1855) in [The Lyttelton Times](#), 03/03/1855, p 4
- Victoria**(arrived 1840) in Eadie, F. [Roll of early settlers and descendants in the Auckland Province prior to the end of 1852](#)
- Victoria** (arrived 03/12/1843) in Rutherford, J. & Skinner, W. H. [The establishment of the New Plymouth settlement in New Zealand, 1841-1843](#), Chapter 14
- Victoria** (arrived 19/01/1852) in [The Lyttelton Times](#), 24/01/1852, p 4
- Victoria** (arrived 03/11/1852) in [The Lyttelton Times](#), 06/11/1852, p 6
- Victoria** (05/12/1861-30/03/1862) in [Emigration to Canterbury: shipping lists, 1856-1874 \(digitised version\)](#)  
“Shipping Intelligence”, [The Lyttelton Times](#), 2 April 1862, p 4. Cabin and steerage passengers listed. Voyage described followed by a list of government immigrants. Also in [The Press](#), 05/04/1862, p 4
- Victoria, HMS Brig** (arrived 1841) in Ward, L. E. [Early Wellington](#), p 86
- Victoria, HM Brig** (arrived 01/08/1847) in Eadie, F. [Roll of early settlers and descendants in the Auckland Province prior to the end of 1852](#)
- Victoria, HM Brig** (arrived 19/02/1854) in [The Lyttelton Times](#), 25/02/1854, p 6
- Victoria, HM Brig** (arrived 02/04/1854) in [The Lyttelton Times](#), 08/04/1854, p 6
- Victory** (05/03/1848-08/07/1848) in Hocken, T M. [Contributions to the early history of New Zealand \(Otago\)](#), Appendix F
- Victory** (arrived 1849) in Ward, L. E. [Early Wellington](#), p 154
- Victory** (arrived 21/04/1851) in Rutherford, J. & Skinner, W. H. [The establishment of the New Plymouth settlement in New Zealand, 1841-1843](#), Chapter 14
- Victory** (arrived 01/05/1851) in Eadie, F. [Roll of early settlers and descendants in the Auckland Province prior to the end of 1852](#)
- Victory** (20/01/1859-14/05/1859) in [Emigration to Canterbury: shipping lists, 1856-1874 \(digitised version\)](#)  
“Shipping News”, [The Lyttelton Times](#), 18 May 1859, p 4. Chief cabin , second cabin , steerage passengers listed. Births and deaths of infants on board. Account of arrival and voyage.
- Victory** (arrived 17/10/1863) in [The Press](#), 19/10/1863, p 2
- Victory** (16/12/1865-24/03/1866) in [Emigration to Canterbury: shipping lists, 1856-1874 \(digitised version\)](#)  
“Shipping”, [The Lyttelton Times](#), 26 March 1866, p 2. Cabin passengers listed. Arrival described and account of voyage. List of immigrants follows.

- Viscount Sandon** (arrived 25/03/1860) in [The Lyttelton Times](#), 28/03/1860, p 4
- Vixen** (arrived 19/02/1855) in Rutherford, J. & Skinner, W. H. [The establishment of the New Plymouth settlement in New Zealand, 1841-1843](#), Chapter 14
- Waikato** (arrived 03/10/1875) in [The Lyttelton Times](#), 04/10/1875, p 2
- Waikato** (arrived 26/07/1877) in [The Lyttelton Times](#), 27/07/1877, p 2
- Waikato** (21/07/1878-27/04/1878) in [The Lyttelton Times](#), 29/04/1878, p 2
- Waikato** (arrived 18/01/1879) in [The Lyttelton Times](#), 20/01/1879, p 4
- Waimate** (arrived 25/01/1875) in [The Lyttelton Times](#), 26/01/1875, p 2
- Waimate** (06/06/1877-03/09/1877) in [The Lyttelton Times](#), 04/09/1877, p 2
- Waimate** (14/06/1878-25/09/1878) in [The Lyttelton Times](#), 26/09/1878, p 2
- Waimate** (14/06/1878-25/09/1878) in [The Lyttelton Times](#), 26/09/1878, p 2
- Waipa** (arrived 24/01/1877) in [The Lyttelton Times](#), 25/01/1877, p 2
- Waipa** (arrived 17/05/1883) in [The Lyttelton Times](#), 18/05/1883, p 4
- Waitangi** (arrived 07/12/1875) in [The Lyttelton Times](#), 08/12/1875, p 2
- Waitangi** (arrived 16/09/1876) in [The Lyttelton Times](#), 18/09/1876, p 2
- Waitangi** (12/07/1877-03/10/1877) in [The Lyttelton Times](#), 05/10/1877, p 2
- Waitangi** (arrived 13/10/1878) in [The Lyttelton Times](#), 14/10/1878, p 2
- Waitangi** (26/07/1879-25/09/1879) in [The Lyttelton Times](#), 26/09/1879, p 4
- Waitangi** (20/07/1880-29/09/1880) in [The Lyttelton Times](#), 30/09/1880, p 4
- Waitangi** (arrived 12/01/1884) in [The Lyttelton Times](#), 14/01/1884, p 4
- Waitara** (19/08/1874-18/11/1874) in [The Lyttelton Times](#), 19/11/1874, p 2
- Wanganui** (arrived 13/01/1878) in [The Lyttelton Times](#), 14/02/1878, p 2
- Water Witch** (arrived 30/11/1853) in [The Lyttelton Times](#), 03/12/1853, p 6
- Waterlily** (arrived 12/12/1862) in [The Press](#), 13/12/1862, p 4
- Water Witch** (arrived 16/03/1854) in [The Lyttelton Times](#), 18/03/1854, p 6
- Water Witch** (arrived 10/12/1854) in [The Lyttelton Times](#), 13/12/1854, p 6
- Wellington** (arrived 15/09/1851) in [The Lyttelton Times](#), 20/09/1851, p 4
- Wellington** (arrived 10/05/1852) in [The Lyttelton Times](#), 15/05/1852, p 4
- Wellington** (arrived 12/04/1853) in [The Lyttelton Times](#), 16/04/1853, p 6

- Wellington** (arrived 26/06/1853) in [The Lyttelton Times](#), 02/07/1853, p 6
- Wellington** (arrived 20/08/1855) in [The Lyttelton Times](#), 22/08/1855, p 5
- Wellington** (arrived 04/01/1856) in [The Lyttelton Times](#), 05/01/1856, p 4
- Western Australia** (arrived 1836) in Eadie, F. [Roll of early settlers and descendants in the Auckland Province prior to the end of 1852](#)
- Westland** (27/11/1879-21/02/1880) in [The Lyttelton Times](#), 23/02/1880, p 4
- Westminster** (arrived 17/03/1840) in Eadie, F. [Roll of early settlers and descendants in the Auckland Province prior to the end of 1852](#)
- Westminster** (arrived 01/04/1843) in Eadie, F. [Roll of early settlers and descendants in the Auckland Province prior to the end of 1852](#)
- Westminster** (arrived 07/06/1856) in [The Lyttelton Times](#), 11/06/1856, p 5  
Passengers from Wellington and London are listed.
- Westminster** (13/10/1857-09/01/1858) in Eadie, F. [Roll of early settlers and descendants in the Auckland Province prior to the end of 1852](#)
- Westminster** (arrived 08/05/1858) in [The Lyttelton Times](#), 12/05/1858, p 4 Sailing from Port Underwood to Lyttelton. One passenger named.
- Whicowhita** (arrived 1841) in Eadie, F. [Roll of early settlers and descendants in the Auckland Province prior to the end of 1852](#)
- Whitby** (arrived 05/11/1841) in Broad, L. [The jubilee history of Nelson from 1842 to 1892](#), p 15
- Whitby** (arrived 1841) in Ward, L. E. [Early Wellington](#), p 86
- Whitby** (departed 27/04/1841) in Neale, J. [Landfall Nelson by sailing ship 16421842](#), p 122
- Whitehall** (arrived 26/07/1873) in [The Lyttelton Times](#), 27/09/1873, p 2
- White Rose** (arrived 21/07/1875) in [The Lyttelton Times](#), 22/07/1875, p 2
- White Swan** (arrived 12/07/1858) in [The Lyttelton Times](#), 14/07/1858, p 3
- White Swan** (arrived 30/08/1858) in [The Lyttelton Times](#), 01/09/1858, p 2
- White Swan** (arrived 08/09/1858) in [The Lyttelton Times](#), 11/09/1858, p 4
- White Swan** (arrived 16/11/1858) in [The Lyttelton Times](#), 17/11/1858, p 4
- White Swan** (arrived 21/10/1858) in [The Lyttelton Times](#), 23/10/1858, p 4
- White Swan** (arrived 21/10/1858) in [The Lyttelton Times](#), 23/10/1858, p 4
- White Swan** (arrived 27/11/1858) in [The Lyttelton Times](#), 27/11/1858, p 4

- White Swan** (arrived 23/12/1858) in [The Lyttelton Times](#), 24/12/1858, p 4
- Wild Irish Girl** (arrived 01/05/1855) in [The Lyttelton Times](#), 02/05/1855, p 4
- Will Watch** (departed 27/04/1841) in Neale, J. [Landfall Nelson by sailing ship 1642 1842](#), p 124
- Will Watch** (arrived 05/11/1841) in Broad, L. [The jubilee history of Nelson from 1842 to 1892](#), p 15
- William & James** (arrived 14/02/1850) in Eadie, F. [Roll of early settlers and descendants in the Auckland Province prior to the end of 1852](#)
- William and Alfred** (arrived 1848) in Ward, L. E. [Early Wellington](#), p 151
- William and Jane** (arrived 14/01/1856) in [The Lyttelton Times](#), 16/01/1856, p 4
- William and Jane** (arrived 07/03/1857) in [The Lyttelton Times](#), 11/03/1857, p 6
- William Bryan** (19/11/1840-31/03/1841) in Rutherford, J & Skinner, W. H. [The establishment of the New Plymouth settlement in New Zealand, 1841-1843](#), Chapter 14
- William Bryan** (arrived 30/03/1841) in Eadie, F. [Roll of early settlers and descendants in the Auckland Province prior to the end of 1852](#)
- William Hyde** (24/10/1851-05/02/1852) in [Canterbury jubilee celebrations : Old Colonists' Committee... passenger lists of Canterbury Association ships](#)  
Also in [The Lyttelton Times](#), 07/02/1852, p 5
- William Hyde** (arrived 05/03/1852) in Rutherford, J. & Skinner, W. H. [The establishment of the New Plymouth settlement in New Zealand, 1841-1843](#), Chapter 14
- William Hyde** (arrived 18/02/1855) in [The Lyttelton Times](#), 21/02/1855, p 4
- William Miles** (05/05/1860-21/08/1860) in [Emigration to Canterbury: shipping lists, 1856-1874 \(digitised version\)](#)  
“Shipping News”, [The Lyttelton Times](#), 25 August 1860, p 4. Cabin passengers listed. Provincial government immigrants listed. Analysis of their trades. Testimonials for Capt. Lilley from the passengers and an account of the voyage.
- William Miles** (03/07/1864-21/10/1864) in [Emigration to Canterbury: shipping lists, 1856-1874 \(digitised version\)](#)  
“Shipping Intelligence”, [The Lyttelton Times](#), 27 September 1864, p 4. Immigrants listed. Published prior to ship’s arrival.  
“Shipping Intelligence”, [The Lyttelton Times](#), 25 October 1864, p 4. Cabin passengers listed. Account of arrival and voyage, details of testimonials presented to Capt. Babot, followed by a list of government immigrants.
- William Prowse** (arrived 05/05/1852) in [The Lyttelton Times](#), 08/05/1852, p 8
- William Prowse** (arrived 16/05/1853) in [The Lyttelton Times](#), 21/05/1853, p 6

**William Stoveld** (arrived 1843) in Ward, L. E. [Early Wellington](#), p 118

**William Watson** (arrived 29/12/1857) in Rutherford, J. & Skinner, W. H. [The establishment of the New Plymouth settlement in New Zealand, 1841-1843](#), Chapter 14

**Winwick** (arrived 1841) in Ward, L. E. [Early Wellington](#), p 110

**Wonga Wonga** (arrived 20/06/1857) in [The Lyttelton Times](#), 24/06/1857, p 6

**Wonga Wonga** (arrived 26/06/1857) in [The Lyttelton Times](#), 29/07/1857, p 4

**Wonga Wonga** (arrived 06/10/1857) in [The Lyttelton Times](#), 10/10/1857, p 4

**Wonga Wonga** (arrived 11/11/1857) in [The Lyttelton Times](#), 14/11/1857, p 4

**Wonga Wonga** (arrived 23/12/1857) in [The Lyttelton Times](#), 26/12/1857, p 4

**Woosung** (11/04/1876-10/08/1876) in [The Lyttelton Times](#), 11/08/1876, p 2

**Zambesi** (arrived 20/09/1863) in *The Press*, 21/09/1863, p 2

**Zealandia** (11/06/1858-21/09/1858) in [Emigration to Canterbury: shipping lists, 1856-1874](#) (digitised version)

“Shipping Intelligence”, [The Lyttelton Times](#), 22 September 1858, p 4. Chief cabin and second cabin passengers listed. Steerage passengers and government immigrants listed. Births and deaths on board. It is noted that the trades and occupations of the Government Immigrants were “unable to be obtained”.

**Zealandia** (arrived 12/11/1859) in [The Lyttelton Times](#), 02/11/1859, p 4 and 16/11/1859, p 4

**Zealandia** (04/02/1862-23/05/1862) in [Emigration to Canterbury: shipping lists, 1856-1874](#) (digitised version)

“Shipping Intelligence”, [The Lyttelton Times](#), 24 May 1862, p 4. Account of arrival followed by list of assisted immigrants and a summary of their trades.

“Shipping Intelligence”, [The Lyttelton Times](#), 28 May 1862, p 4. Cabin passengers listed.

Also in *The Press*, 24/05/1862, p 4 and 26/05/1862, p 5

**Zealandia** (03/09/1863-08/12/1863) in [The Lyttelton Times](#), 12/12/1863, pp 4 & 5. Cabin and steerage passengers listed plus a description of the voyage

**Zealandia** (arrived 09/01/1865) in *The Press*, 11/01/1865, p 3 and [The Lyttelton Times](#), 12/01/1865, p 4

**Zealandia** (23/09/1870-23/12/1870) in [Emigration to Canterbury: shipping lists, 1856-1874](#) (digitised version)

“Shipping”, [The Lyttelton Times](#), 24 December 1870, p 2. Account of arrival and voyage, Captain White’s report and testimonials presented to him from the passengers. Government immigrants listed. Analysis of their trades.

“Shipping”, [The Lyttelton Times](#), 27 December 1870, p 2. Chief cabin and second cabin passengers listed.

**Zealandia** (arrived 09/12/1871) in [\*The Lyttelton Times\*](#), 11/12/1871, p 2

**Zingari** (arrived 18/12/1854) in [\*The Lyttelton Times\*](#), 20/12/1854, p 4

**Zingari** (arrived 13/03/1855) in [\*The Lyttelton Times\*](#), 14/03/1855, supplement

**Zingari** (arrived 29/03/1855) in [\*The Lyttelton Times\*](#), 31/03/1855, p 4

**Zingari** (arrived 12/04/1855) in [\*The Lyttelton Times\*](#), 14/04/1855, p 4

**Zingari** (arrived 26/04/1855) in [\*The Lyttelton Times\*](#), 28/04/1855, p 5

**Zingari** (arrived 17/05/1855) in [\*The Lyttelton Times\*](#), 19/05/1855, p 7

**Zingari** (arrived 31/05/1855) in [\*The Lyttelton Times\*](#), 02/06/1855, p 7

**Zingari** (arrived 21/06/1855) in [\*The Lyttelton Times\*](#), 23/06/1855, p 4

**Zingari** (arrived 19/07/1855) in [\*The Lyttelton Times\*](#), 21/07/1855, p 5

**Zingari** (arrived 27/07/1855) in [\*The Lyttelton Times\*](#), 28/07/1855, p 5

**Zingari** (arrived 23/08/1855) in [\*The Lyttelton Times\*](#), 25/08/1855, p 3

**Zingari** (arrived 29/09/1855) in [\*The Lyttelton Times\*](#), 03/10/1855, p 7

**Zingari** (arrived 04/10/1855) in [\*The Lyttelton Times\*](#), 06/10/1855, p 4

**Zingari** (arrived 18/11/1855) in [\*The Lyttelton Times\*](#), 21/11/1855, p 6

**Zingari** (arrived 31/12/1855) in [\*The Lyttelton Times\*](#), 02/01/1856, p 4

**Zingari** (arrived 23/01/1856) in [\*The Lyttelton Times\*](#), 23/01/1856, p 4

**Zingari** (arrived 25/02/1856) in [\*The Lyttelton Times\*](#), 27/02/1856, p 6

**Zingari** (arrived 26/03/1856) in [\*The Lyttelton Times\*](#), 02/04/1856, p 6

**Zingari** (arrived 10/05/1856) in [\*The Lyttelton Times\*](#), 14/05/1856, p 6

**Zingari** (arrived 15/06/1856) in [\*The Lyttelton Times\*](#), 18/06/1856, p 5

**Zingari** (arrived 21/07/1856) in [\*The Lyttelton Times\*](#), 23/07/1856, p 7

**Zingari** (arrived 28/08/1856) in [\*The Lyttelton Times\*](#), 30/08/1856, p 4

**Zingari** (arrived 07/10/1856) in [\*The Lyttelton Times\*](#), 08/10/1856, p 7

**Zingari** (arrived 16/11/1856) in [\*The Lyttelton Times\*](#), 22/11/1856, p 6

**Zingari** (arrived 15/12/1856) in [\*The Lyttelton Times\*](#), 20/12/1856, p 6

**Zingari** (arrived 25/01/1856) in [\*The Lyttelton Times\*](#), 28/01/1856, p 6

**Zingari** (arrived 01/02/1857) in [\*The Lyttelton Times\*](#), 04/02/1857, p 8

**Zingari** (arrived 01/03/1857) in [The Lyttelton Times](#), 04/03/1857, p 6

**Zingari** (arrived 06/06/1857) in [The Lyttelton Times](#), 10/06/1857, p 7