

Z 7-1
C 5

CITY OF
CHRISTCHURCH
NEW ZEALAND.



1906- 7



CHRISTCHURCH CITY COUNCIL
CANTERBURY PUBLIC LIBRARY

New Zealand Collection

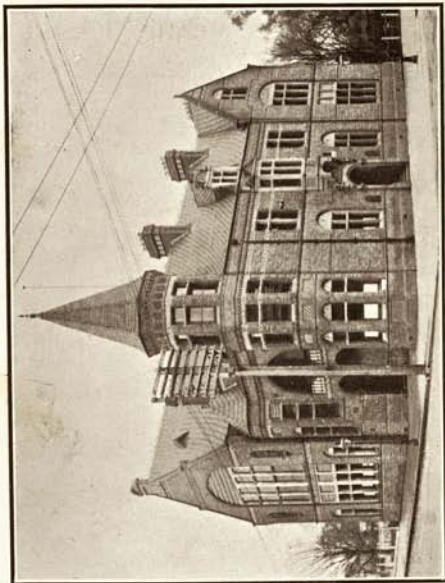
993.171 CH2

336145

11 October 1972

Printed by H.G. Ell

Research Room



CITY COUNCIL CHAMBERS.

CANTERBURY PUBLIC LIBRARY

OFFICERS—Continued.

Abattoir Manager—H. S. S. Kyle, G.M.C.V.S.

Chief Officer of Fire Brigade and Fire Inspector—E. Smith.

Draughtsman—C. Dawe.

Shorthand Clerk and Typiste—F. Hadfield.

Junior Clerks—L. Atkinson, L. Keig.

Cadet—G. L. Cole.

Messenger—V. Esselborn.

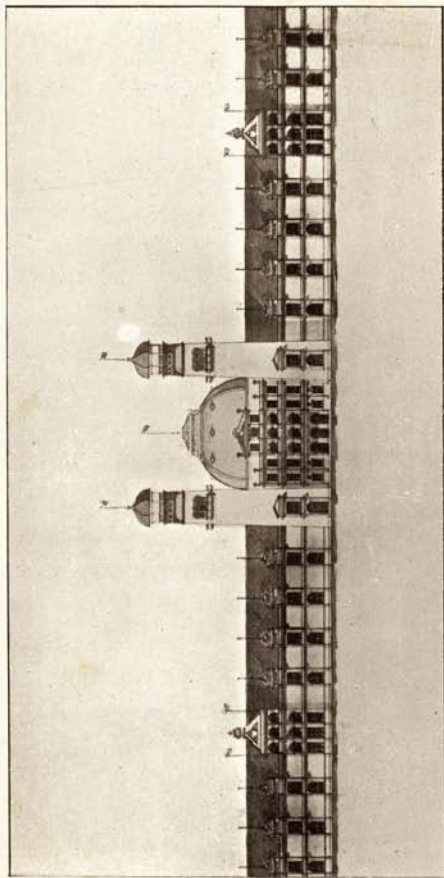
Inspector of Buildings—A. Batten.

Foremen of Works :

Central Ward	J. C. Cameron
Linwood	H. Fabling
St. Albans	G. G. Davidson
Sydenham	H. Simpson

CITY MEMBERS OF HOUSE OF REPRESENTATIVES.

C. M. GRAY, Esq.	Christchurch North
T. H. DAVEY, Esq.	East
H. G. ELL, Esq.	South
W. W. TANNER, Esq.	Avon (including Linwood Ward)



MAIN ENTRANCE N.Z. INTERNATIONAL EXHIBITION.

PAST CHAIRMEN.

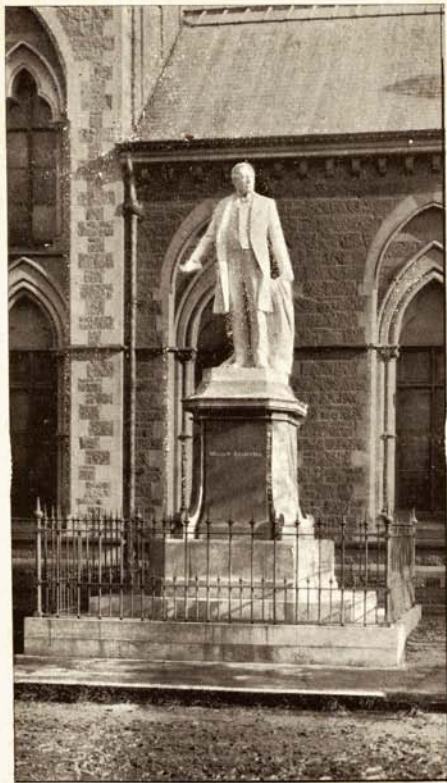
1862-3	JOHN HALL
1863-4	JOHN OLLIVIER
1865	ISAAC LUCK
1866	E. B. BISHOP
1867	W. WILSON

PAST MAYORS.

1868	W. WILSON
1869	J. ANDERSON
1870	A. DUNCAN
1871	J. P. JAMESON
1872	H. SAWTELL
1873	E. B. BISHOP
1874	M. B. HART
1875-76	F. HOBBS
1877	J. GAPES
1878	H. THOMSON
1879-1880	C. T. ICK
1881	J. GAPES
1882-3	J. G. RUDDENKLAU
1884-5	C. P. HULBERT
1886-7	A. AYERS
1888-9	C. LOUISSON
1890	S. MANNING
1891	C. M. GRAY
1892	W. PRUDHOE
1893	EDEN GEORGE
1894	T. GAPES
1895	W. H. COOPER
1896	H. J. BESWICK
1897	W. H. COOPER
1898-9	C. LOUISSON
1900	W. REECE
1901	A. E. G. RHODES
1902	H. F. WIGRAM

GREATER CHRISTCHURCH CONSTITUTED, 1903.

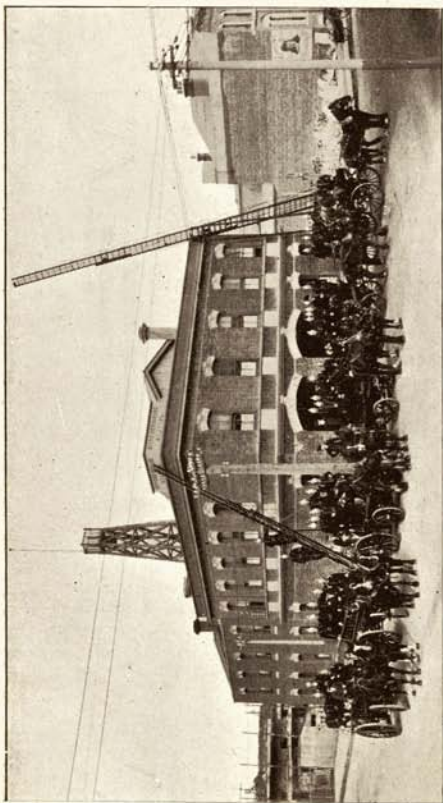
1903	H. F. WIGRAM
1904-5	C. M. GRAY



THE ROILESTON STATUE.

COMMITTEES.

- Abattoir**—His Worship the Mayor, Councillors Cooper (Chairman), Payling, Allison and Chick.
- By-Laws**—His Worship the Mayor, Councillors Loughnan (Chairman), Otley, Parsons, Hurst-Seager and Orchard.
- Finance and Departmental**—His Worship the Mayor, Councillors Hadfield (Chairman), Neate, Otley, Payling and Orchard.
- Fire Brigade**—His Worship the Mayor, Councillors Neate (Chairman), Parsons, Gapes and Horsley.
- Reserves and Cemeteries**—His Worship the Mayor, Councillors Payling (Chairman), Manhire, Parsons, Chick and Hurst-Seager.
- Sanitary**—His Worship the Mayor, Councillors Gapes (Chairman), Allison, Cooper and Horsley.
- Sydenham Water Supply**—His Worship the Mayor, Councillors Hadfield (Chairman), Allison, Manhire and Parsons.
- Works and Lighting**—His Worship the Mayor, Councillors Otley (Chairman), Cooper, Loughnan, Hadfield, Manhire and Chick.



FIRE BRIGADE STATION, LICHFIELD STREET.

MUNICIPAL RESERVES.

WITHIN THE CITY.

	A.	R.	P.
Cranmer Square	4	1	24
Latimer Square	4	1	24
Library, Waltham Road	0	0	36
Poulson Street, Endowment	1	1	11
Recreation Reserve, Jerrold Street	5	0	0
River Banks Reserves	10	3	9
Victoria Square	3	3	21

OUTSIDE THE CITY.

Bottle Lake, Sanitary	818	1	13
Bromley, Municipal purposes	30	0	0
Bromley, Slaughterhouse	6	0	0
Bromley, Smallpox Hospital	22	0	0
Cairnbrae, Endowment	449	0	0
Cairnbrae,	398	2	34
Chaney's, Sewage, &c.	936	1	32
Chaney's,	160	0	0
Chaney's,	40	0	0
Christchurch Cemetery	25	3	7
Geraldine, Endowment	2,000	0	0
Lyndhurst,	345	0	0
New Brighton, planting	516	0	21
Rakaia, shingle	100	2	20
Shirley, Municipal purposes	30	0	0

FREEHOLD LAND.

	A.	R.	F.
Central Yard, Armagh, Manchester and Gloucester Streets	2	0	36
Fire Brigade Station, Lichfield Street	0	0	36½
Stone Yard, South Belt	1	0	1
Abattoirs, Sockburn	54	2	13
Yard and Offices, Worcester Street, Linwood	0	0	37
Stone Yard, Ferry Road, Linwood	0	1	22
Yard and Fire Brigade Station, Papanui Road, St. Albans	0	2	32½
Gravel Pit, Strowan, St. Albans	1	1	0
Cemetery, Milton Street, Spreydon	17	1	2
Section, Elgin Street, Sydenham	0	1	0
Yard, Colombo Street, Sydenham	0	0	10
Baths, Waverley Street, Sydenham	0	0	16
Fire Brigade Station and Offices, Colombo Street, Sydenham	4	2	8
Stone Yard, Huxley Street, Sydenham	1	1	0
Queen Street, Sydenham	0	0	16

PUBLIC PARKS.

Linwood Park	21	0	0
St. Albans Park	15	1	37
Sydenham Park	14	0	1
Hagley Park and Botanical Gardens	495	0	0

CITY RATES.

RATEABLE VALUE.

Capital: £7,456,691. Unimproved, £3,095,062.

CENTRAL WARD.

General, 2½d. in the £ on Unimproved Value.
 Hospital and Charitable Institutions and Charitable Aid, 2d. in the £ on Capital Value.
 Special (within original boundaries only), 1½d. in the £ on Unimproved Value.
 Special (within original boundaries only), ½d. in the £ on Unimproved Value.
 Special, ½d. in the £ on Unimproved Value.
 Special (that portion formerly known as Richmond), 1½d. in the £ on Unimproved Value,
 Uniform Annual Fee, 20s. per Closet Pan.

In addition to the above, the Christchurch Drainage Board levies a General Rate of ¼d. in the £ in the Sewage area, ½d. in the £ in the Rural area, and a Special Rate of ½d. in the £ (within original boundaries only); and the South Waimakariri River Board a General Rate of ½d. in the £, Class 1, and ¾d. in the £, Class 2. The whole are on the Capital Value.

LINWOOD WARD.

General, 2½d. in the £ on Unimproved Value.
 Hospital and Charitable Institutions and Charitable Aid, 2d. in the £ on Capital Value.
 Special, 1½d. in the £ on Unimproved Value.
 Special, 1½d. in the £ on Unimproved Value.
 Uniform Annual Fee, 9s. 2d. per Closet Pan.

In addition to the above the Christchurch Drainage Board levies a General Rate of ¼d. in the £ in the Sewage area, and ½d. in the £ in the Rural area; the South Waimakariri River Board a General Rate of ½d. in the £. The whole are on the Capital Value.



JUBILEE CLOCK TOWER.

CITY RATES.

ST. ALBANS WARD.

General, $2\frac{2}{3}\frac{2}{3}$ d. in the £ on Unimproved Value.
 Hospital and Charitable Institutions and Charitable Aid,
 $\frac{2}{3}$ d. in the £ on the Capital Value.
 Special (special district), $\frac{2}{3}$ d. in the £ on Unimproved Value.
 Special (special district), $1\frac{1}{2}$ d. in the £ on Unimproved Value.
 Uniform Annual Fee, 8s. 7d. per Closet Pan.

In addition to the above, the Christchurch Drainage Board levies a General Rate of $\frac{1}{4}$ d. in the £ in the Sewage area, and $\frac{1}{4}$ d. in the £ in the Rural area; the South Waimakariri River Board a General Rate of $\frac{1}{8}$ d. in the £, Class 1, and $\frac{3}{8}$ d. in the £, Class 2. The whole are on the Capital Value.

SYDENHAM WARD.

General, $2\frac{2}{3}\frac{1}{2}$ d. in the £ on Unimproved Value.
 Hospital and Charitable Institutions and Charitable Aid,
 $\frac{2}{3}$ d. in the £ on the Capital Value.
 Special, $1\frac{1}{4}$ d. in the £ on Unimproved Value.
 Uniform Annual Fee, 11s. 10d. per Closet Pan.
 Water Rate, £3 10s. per centum on the Annual Value.

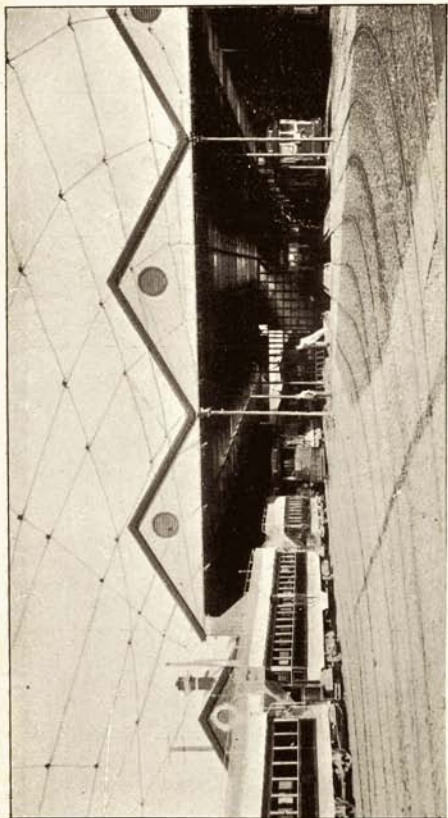
In addition to the above, the Christchurch Drainage Board levies a General Rate of $\frac{1}{4}$ d. in the £ in the Sewage area, and $\frac{1}{4}$ d. in the £ in the Rural area; the South Waimakariri River Board a General Rate of $\frac{3}{8}$ d. in the £. The whole are on the Capital Value.

LOANS—Central Ward.

AMOUNT AUTHORIZED	AMOUNT RAISED	PURPOSE	RATE OF INTEREST	ACCRUED SINKING FUND	DATE OF MATURITY
£ 35,000 25,000 6,000 1,640 35,000	£ 35,000 25,000 6,000 1,640 35,000	Drainage Public Works Municipal Offices Richmond Ward Channelling Central Yard, Bridges and Repair- ment of Overdrain Destructor, Sanitary Works Abattoir Electrical Plant	6 per cent. 5 " " 4 " " 4 " " 4 " "	£ 26,779 4 2 6,049 3 9 Nil 128 7 2 Nil Nil* Nil Nil	s. d. 1922—1924 1935 1906 1928 1930 1930 1935—6 1925
18,500 20,273 11,450	18,500 20,273 11,450		4 " " 4 " "	Nil Nil Nil	1930 1935—6 1925
132,863	132,863		4½	32,056 15 1	

LOANS.

AMOUNT AUTHORIZED	AMOUNT RAISED	PURPOSE	RATE OF INTEREST	ACCRUED SINKING FUND	DATE OF MATURITY
£ 275 1,200 11,182	£ 275 1,200 10,500	LINWOOD WARD Constructing Brick Sewer Purchase of Recreation Ground Public Works	5 per cent. 4½ " "	£ 64 1 3 271 6 0 489 19 2	s. d. 1919 1920 1920
12,657	11,075		760 10 2		
3,000 23,000	3,000 22,550	ST. ALBANS WARD Channelling Channelling and Kerbing	4 per cent. " "	Nil Nil	1923 1918
26,000	25,550				
25,000 15,000 10,000	25,000 15,000 10,000	SYDENHAM WARD Channelling and Asphalt Waterworks Public Works	5 per cent. 4 " "	2,131 18 10 Nil Nil	1935 1921 1921
50,000	50,000			2,131 18 10	



TRAMWAY CAR SHED.

CANTERBURY PUBLIC LIBRARY MISCELLANEOUS INFORMATION.

CEMETERIES.

There are two Public Cemeteries, one situated at Bromley, in the Heathcote Road District, containing 25A. 3R. 7P., and about 2½ miles from Cathedral Square. L. D. Hughes, Sexton; H. Round, Assistant. The other is situated in Milton Street, Spreydon, and contains 17A. 1R. 2P., and is about 3 miles from Cathedral Square. W. H. French, Sexton.

TRAMWAYS.

The Tramways are under the control of the Christchurch Tramway Board. Chairman, W. Reece, Esq.; Secretary, F. Thompson; Engineer, F. H. Chamberlain.

GAS.

The City Gasworks are in the hands of a Public Company. Price of Gas, 5s. 3d. per 1,000 feet net.

DESTRUCTOR.

The City Refuse is destroyed in a Beaman and Dee's Two-unit Destructor.

The Steam produced at the Destructor is used for operating an Electrical Plant, consisting of two generating units of 100 kilowatts each, one of 150 kilowatts, and one of 200 kilowatts.

The Electric Current is sold for lighting and power at the following rates:—

LIGHTING.

For the first 500 Units, 7d. per Unit.

For each additional Unit over the first 500 and under 1,001, 5d. per Unit.

For each additional Unit over the first 1,000, 4½d.

The above rates are subject to a discount of 1d. per Unit on accounts paid on or before the 14th day of the month. Minimum charge, 4 Units.

POWER AND HEATING.

Three-pence per Unit, subject to a discount of ¾d. per Unit on Accounts paid on or before the 14th day of the month. Minimum charge, 16 Units.

