

## 2015 Young Adult Connect Programmes— Years 7-13

### Programmes and classes offered at Christchurch City Libraries 2015

Our aim for Connect programmes is to encourage young adults in developing life-long learning habits for the digital age through an introduction to our library resources. These free programmes are one off sessions, and can be delivered for any level of ability for up to 30 students. The sessions can be tailored to a specific curriculum area or topic.

**Cost:** Free

**Where:** At your school, at a library local to you or at a Library Learning Centre

**When:** Call us to discuss dates and times



### Information Literacy

#### NCEA Study Boost

When study pressure is increasing we can support by showing your students the subject relevant databases and other electronic resources available through the library. We have physical resources available and plenty of online help with background reading and specialist subject reference material. This session encourages students to broaden the pool of primary sources they are using for information and research, and to consider what is trustworthy and relevant. There are many fun and easy ways we can guide students to reliable study support in all areas of the New Zealand curriculum.

#### AnyQuestions—Real time, real person, real help.

Book a session with Christchurch City Libraries to introduce students to the national online reference service for New Zealand school students, AnyQuestions. One of our librarians will visit your school and guide the class through a live demonstration with an online AnyQuestions librarian. Sessions are best tailored to suit a specific class enquiry topic. Students will come away with an awareness of quality online resources and greater confidence evaluating websites and formulating search strategies. For more information about the AnyQuestions service please visit [www.anyquestions.co.nz](http://www.anyquestions.co.nz). This session is offered on Thursdays.



**Book today  
and Win**

First three bookings will win a 3D  
printing and design tutorial\*

## Te Ao Māori

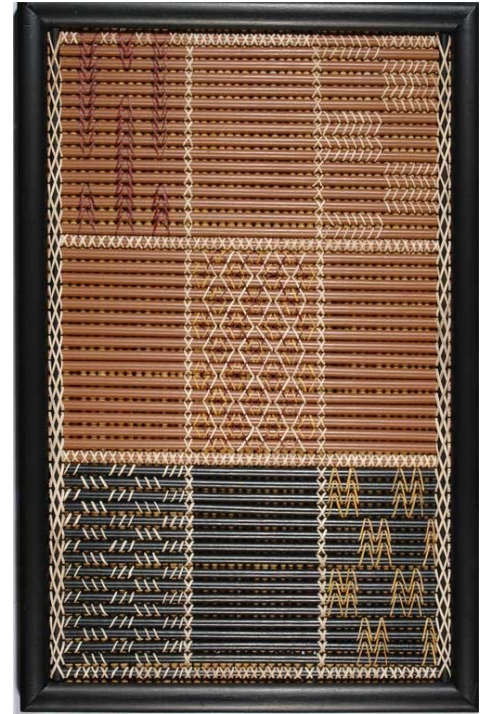
Ngā Kete Wānanga-o-Ōtautahi, Christchurch City Libraries have a wealth of Māori Information resources, from the print based Ngā Pounamu collection and Ngāi Tahu collections to the digital resources in the Māori Zone on our website.

### Ngā Taonga Māori Kia tuhuno—Connect to our Māori Resources

This session will introduce students and teachers to our wide ranging resources, which cover te reo Māori, tikanga, Matariki, whakapapa, arts and crafts, and local iwi history. A particular focus is given to Tī Kōuka Whenua, which provides localised information about the Māori cultural heritage of Christchurch and Canterbury.

### Ngā Pounamu Māori - Specialised Class Session

Located at Central Library Manchester, Ngā Pounamu Māori is a permanent collection reflecting the important status of tangata whenua. We are happy to offer orientation and hands on sessions to classes at all levels in using our resources. Special emphasis is given to any material of local nature. Prior bookings are required for groups, so that we can plan and prepare for your visit. Your students will find: resources on cultural and traditional practices and protocols; historical information on New Zealand Land Wars; whakapapa resources; Treaty of Waitangi and te reo Māori resources. The Ngā Pounamu Māori collection holds the Ngai Tahu collection, the Māori Land Court minutes, and information related to Te Kereme (Ngai Tahu treaty settlement claims).



Pūawaitanga o te Ringa - Fruits of our busy hands. One of a series of tukutuku panels that were specially woven as a community project for the new Nga Pounamu Māori Centre which was created as a result of the 2001/2002 refurbishment of the Central Library.

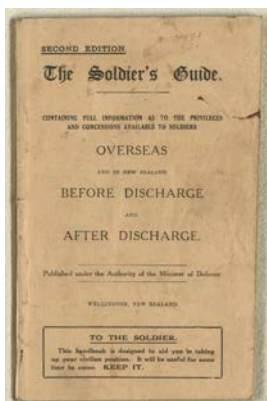
---

## eBook Talking—Meet you in the Digital Library

We know your students are online. So are we. Nearly a quarter of library business is now online. In this session we will show students how to use our website to find free eBooks and other electronic resources such as online newspapers and eMagazines. We will demonstrate how to find any kind of e-material for leisure and/or learning. The emphasis is on the love of reading and how 21st century technology is enhancing the range and access to great content.

---

## Remembering the First World War



Book a session with Christchurch City Libraries to get the most out of our resource pack 'Remembering the First World War'. We will help you and your students navigate primary sources on websites and to search databases to find digital imagery relating to World War One and the Canterbury Experience. We will explore sites such as Papers Past, Cenotaph and Christchurch City Libraries Website. We can help you make the past come alive for your students. If you do not have the resource pack please visit our website for a downloadable pack or contact us.



Images courtesy of Barry Sullivan. Private collection.

Check out our website: [my.christchurchcitylibraries.com/learning-centres/](http://my.christchurchcitylibraries.com/learning-centres/)



## Specialised classes

Subject	School based	Learning Centre	Central Manchester	Local Library
Local Places People and events	Y		Y	
Cyber Citizenship	Y	Y		
Information Literacy	Y	Y		
WW1 Resources	Y	Y	Y	Y
Spring Bok Tour 1981	Y		Y	Y
Vietnam War	Y		Y	Y
Family History		Y	Y	
New Zealand Disasters	Y		Y	Y
Referencing skills	Y	Y		Y
Local History			Y	
"The day I was born"			Y	
Primary sources (newspapers, historical images etc)	Y	Y	Y	Y



Rescuing Mr K. Ballantyne from the burning building on Colombo Street, Christchurch. [1947] File Reference CCL PhotoCD 1, IMG0018

These are suggested subjects only and others may be available on request. Content will vary depending on where the programme is delivered and may be tailored to suit your curriculum needs. Please contact us (see below) to discuss your requirements.

## Our Facilities

### Learning Centres

There are Learning Centres at South Library, Te Hāpua: Halswell Centre, Upper Riccarton Library and New Brighton Library. Each of these includes a suite of computers.

### Central Library Manchester

This library is home to the Aotearoa New Zealand Centre and Ngā Pounamu Māori Collection. Expert staff are available to help you and your students research subjects and navigate the special collections.

### Local Library

Each library has different availability of space and resources. Free wifi, study spaces and friendly staff are standard.

### Booking Procedures

Make initial contact via phone or email. Dates will then be discussed and booked into our Learning Centre calendar. Please note: If we are delivering at your school, internet access will be required. We can bring iPads for the students to use if you do not have computers available.

### Contact Us

Address: 66 Colombo Street, Christchurch 8022

Phone: 03 941 5140

Email: [learningcentre@ccc.govt.nz](mailto:learningcentre@ccc.govt.nz)

\* Win a two hour tutorial session for teachers on 3D printing and design. Date and time negotiable with the winners.



Check out our website: [my.christchurchcitylibraries.com/learning-centres/](http://my.christchurchcitylibraries.com/learning-centres/)