



Christchurch City Libraries

Christchurch City Council

A citywide network of libraries
contributing to
Christchurch City's
Community Outcomes

Places and Spaces Conference, Adelaide, 31 March 2006



Christchurch City

Population: 344,000

www.christchurch.org.nz

www.localeye.info

 Christchurch City Libraries
Ngā Kete Wānanga-o-Ōtautahi





Dr Lesley McTurk, Chief Executive, Christchurch City Council

“ In Christchurch city we believe libraries are about more than books and buildings.

Libraries are at the hub of our communities.

No longer places where everyone has to be quiet, today's libraries are busy information centres focusing on customers and offering a place to meet friends for coffee, surf the net and, of course, find the latest thriller.

The benefits to our communities are well worth the ongoing significant investment.

In the future we anticipate even more innovation in the way libraries help create inclusive communities, and are centres for lifelong learning, fun and creativity.”

Community outcomes



A City for Recreation, Fun and Creativity



... recreational activities contribute to our economy, identity, health and well-being







A City of Lifelong Learning



... learning opportunities help us to participate in the community and economy









A Prosperous City



... investing in ourselves and in our future









A City of Inclusive and Diverse Communities



All people feel a sense of belonging and participation in the community









New Brighton Library

- Opened July 1999
- 970m²
- Ave monthly visitors – 30,000
- Ave monthly issues – 30,000
- Collection size – 55,000





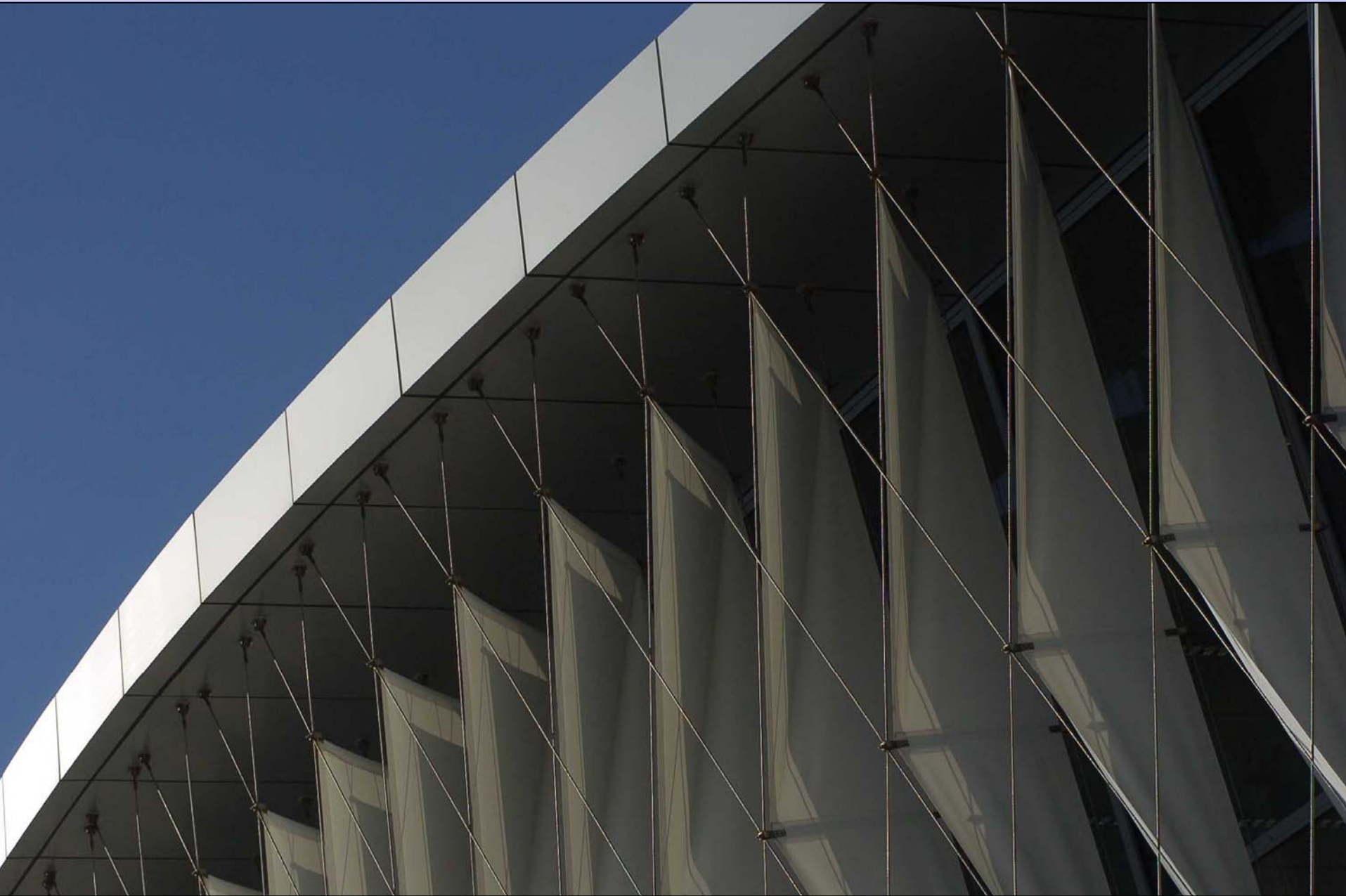
New Brighton Lib
Te Whare Pukapuka o Te Karoro



New Brighton Library
Te Whare Pukapuka o Te Karoro Inutai













Animals
Ngā ō Kāwhiri
Nature
Ao Tūrua

History
Whakaari

Homework Zone
Wāhi Hāu Kōwhiri
Kōwhiri
Kōwhiri
Kōwhiri









South Library, Learning Centre and Service Centre

- Opened August 2003
- Catchment population of 45,000
- 2,500m²
- Average monthly visitors – 35,000
- Average monthly issues – 55,000
- Collection size – 75,000



 Christchurch City Libraries - South
Te Kete Wānanga-o-Wai Mōkihi
Beckenham Service Centre

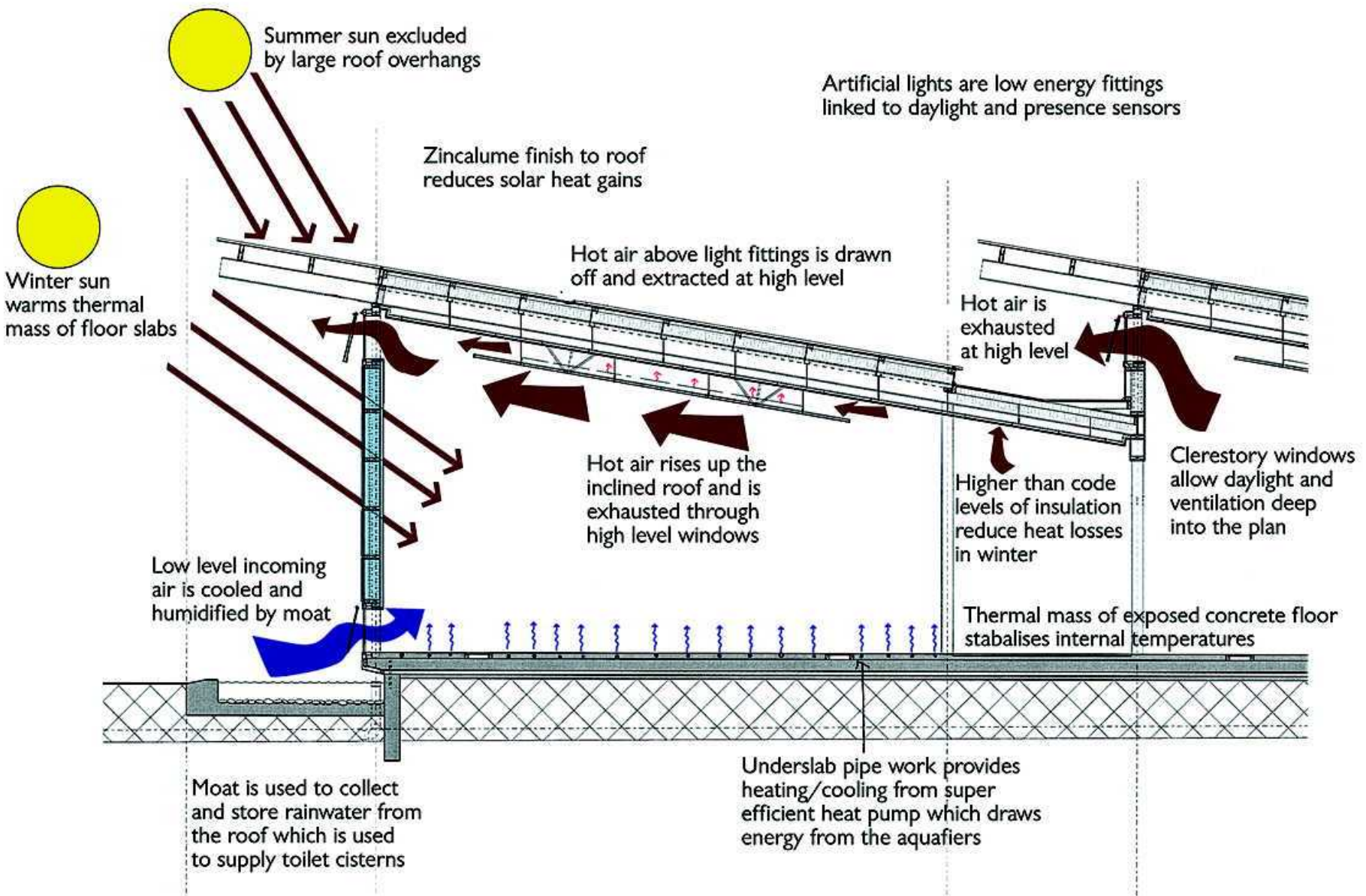
 CHRISTCHURCH
CITY COUNCIL - YOUR PEOPLE - YOUR CITY

 SOUTH

learning centre
Pūtahi Akoranga







Summer sun excluded by large roof overhangs

Winter sun warms thermal mass of floor slabs

Zincalume finish to roof reduces solar heat gains

Artificial lights are low energy fittings linked to daylight and presence sensors

Hot air above light fittings is drawn off and extracted at high level

Hot air is exhausted at high level

Hot air rises up the inclined roof and is exhausted through high level windows

Higher than code levels of insulation reduce heat losses in winter

Clerestory windows allow daylight and ventilation deep into the plan

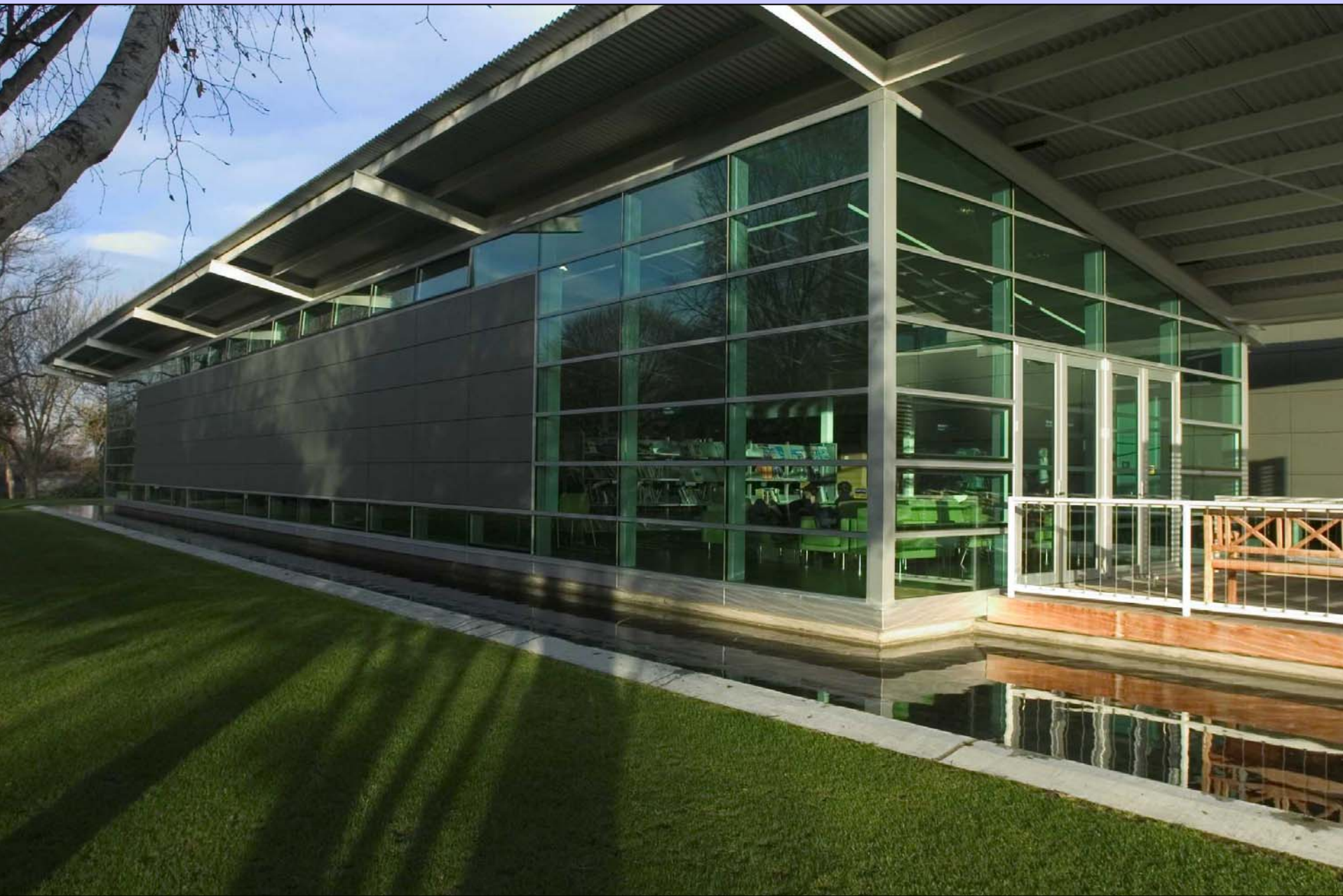
Low level incoming air is cooled and humidified by moat

Thermal mass of exposed concrete floor stabilises internal temperatures

Moat is used to collect and store rainwater from the roof which is used to supply toilet cisterns

Underslab pipe work provides heating/cooling from super efficient heat pump which draws energy from the aquifers















eat

drink

red.

Issues
Wāhi Hoatu

Sell Issue
Māu e Tūhū



Isiue
e Tuku

Isiue
e Tuku

Isiue
e Tuku

Isiue
e Tuku

Isiue
e Tuku

Isiue
e Tuku







Toilets
Apt. Where is

Reference
Loans Whistling

For
Bookings
please
contact the
Issues Desk



Sign hanging from the ceiling on the left side of the hallway.

Library
Sign hanging from the ceiling above the right side of the hallway.

Children's Library
Where Kids
Sign hanging from the ceiling above the children's library area.

Young Adult
Wahi Ranga
Sign hanging from the ceiling above the young adult section.

Computers
Sign hanging from the ceiling above the computer area.

Notice posted on a board on the left side of the hallway.



Reference
Kōrero Whakaitenga

English Language Skills
Nga Pukenga Reo o Ingarangi

Ngā Tānga Mō
Nga Pūkenga

New Books
Nga Pūkenga





Magazines
Maga Moheni

Recent Returns Section
Maga Moheni

Maga Moheni

Maga Moheni

Maga Moheni

Maga Moheni

Maga Moheni

Maga Moheni

Maga Moheni

Maga Moheni

Maga Moheni

Maga Moheni

Maga Moheni

Maga Moheni

Maga Moheni

Maga Moheni

Maga Moheni

Maga Moheni

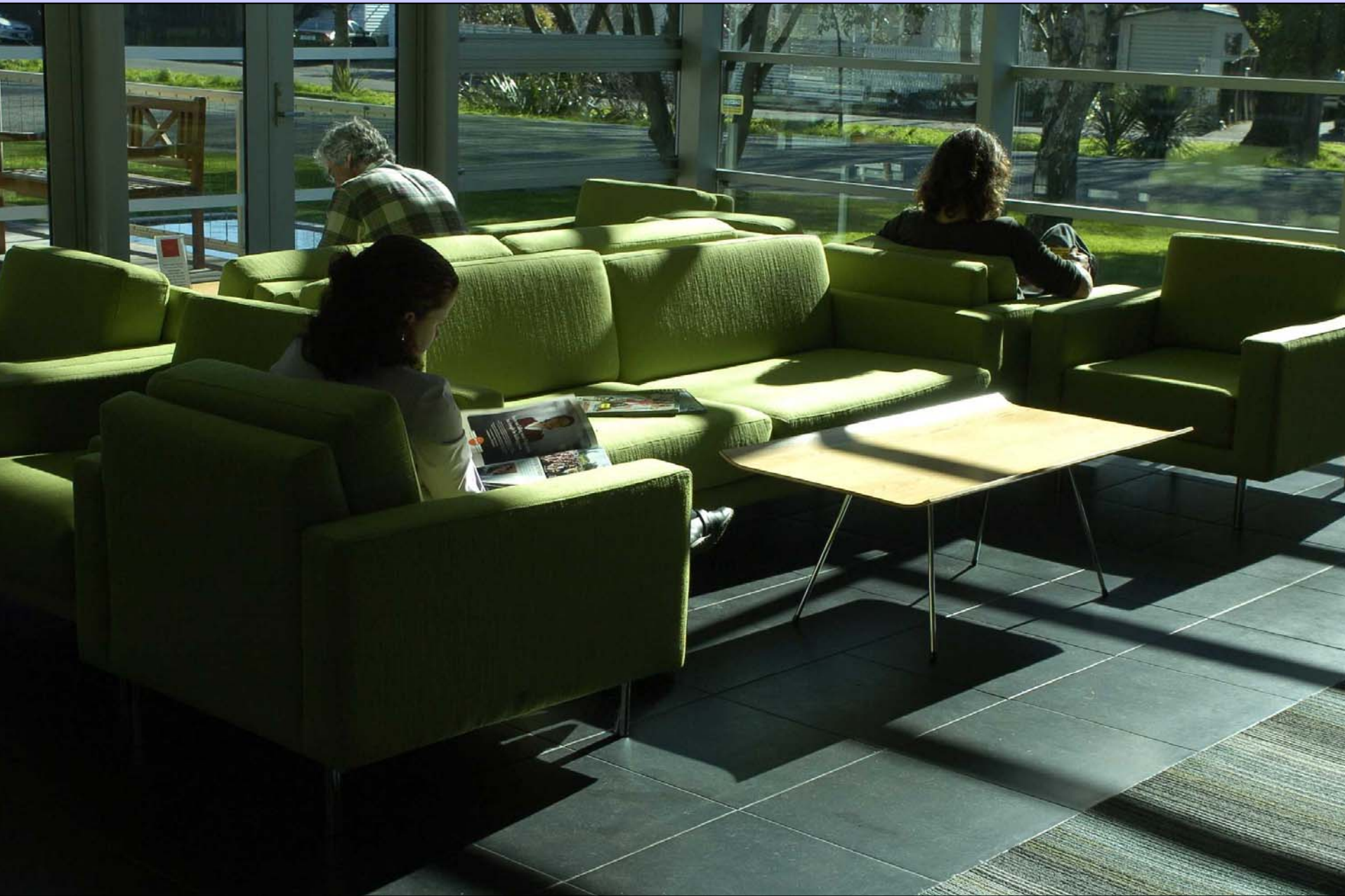
Maga Moheni

Maga Moheni

Maga Moheni

Maga Moheni





Parklands Library and Learning Centre

- Opened August 2005
- 400m² with a catchment population of 10,000
- Ave monthly visitors: 12,000
- Ave monthly issues: 22,000
- Collection size – 25,000







Time Zones

Play

Monday & Tuesday 9-12

Wednesday & Thursday 10-12

Friday 10-12

Saturday 10-12

Sunday 10-12

connect

Monday 10-12

Tuesday 10-12

revive

Monday & Tuesday 10-12

Wednesday & Thursday 10-12

Friday 10-12

relax

Saturday 10-12

Hire

Monday - Friday 10-12



Upper Riccarton Community and School Library

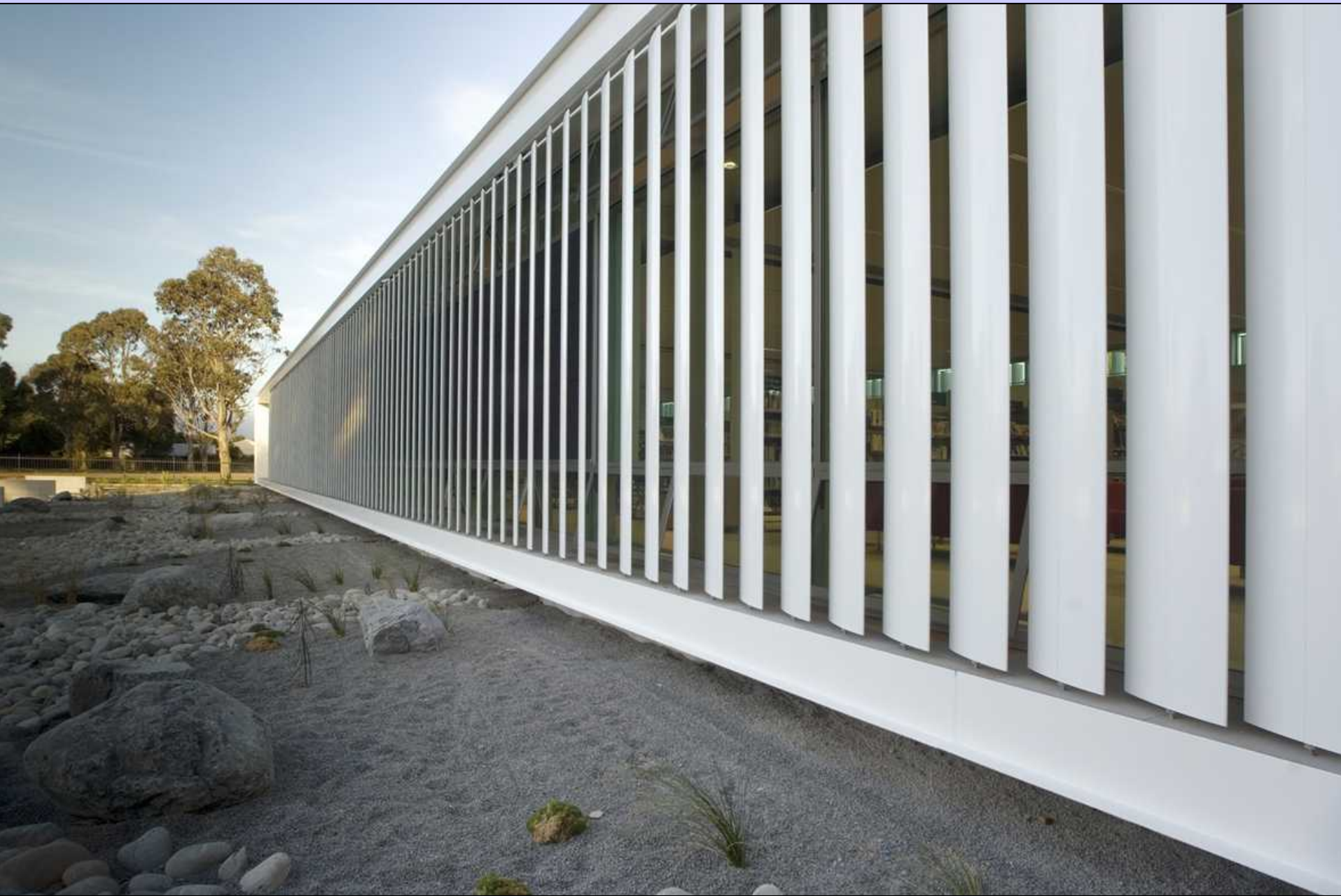
- Opened January 2006
- Partnership between Christchurch City Libraries and Riccarton High School
- Community catchment population around 35,000 and school population of 1100
- Monthly visitors to be around 30,000
- Collection size around 60,000



MAIN SOUTH ROAD















RETURNS
Please wrap CDs and cassettes securely.
They damage easily.
Items returned after hours will not be cleared
from your record until the next working day.

RETURNS

BOOKS / MAGAZINES

CDs DVD's VIDEOS

BOOKS / MAGAZINES











ka Seo dhowow أهلاً بكم Muligaya ng pagdating 환영합니다
ulwinaka خوش آمدید Welkon 欢迎 Malo e lava hua



Library & Café

Upper Riccarton Community and School Library
Te Kete Wānanga o Pūtarangamohi

Christchurch City Libraries
Ngā Kete Wānanga-o-Ōtautahi

Riccarton School











Non-Fiction
Take Motuhake

Reference
Korero Whakakitenga

Biography
Korero Taumata Rau

Non-Fiction
Take Motuhake

Biography
Korero Taumata Rau

Papers Past
The World's First Paper

Need Information?

ATLAS

WORLD
2008

ATLAS

Stack of brochures or pamphlets on a table.

Computer monitor and keyboard on a workstation.

Computer monitor and keyboard on a workstation.





















Graphic Novels
Purakau Pikitia

Study Guides
Akoranga Tohutohu

Fiction
Take Waiwai

Magazines
Ngā Akhori





YOUNG ADULT















Non-Fiction
Take Motuhake

Non-Fiction
Take Motuhake

Cafe rep.







Knowledge
the library
your world

He aate me
he tangata
he tangata
he tangata

me
te A
ta

Mag
Mob



is free at just bringing container.

te kai I a ko ia te ki
.w



"Ko

North
The Harbour

Library



He aha e
nui o
he tangata
he tangata
he tangata

meeting?
'Aa?
pa





A min
to a

The real
e

voice of class



Customer Services
Ratonga Kaiutu
Enquiries / Membership
Wahi Pātaītai / Wāhi Tūhonotanga

Issues Desk
Wahi Pātaītai

EXIT

EXIT

EXIT



Cafes











Menu board with various items and prices.

Menu board with various items and prices.

ditto
Easy Zone
Te Whānui



\$2.50
\$3.00
\$3.00
\$3.50
\$3.50
\$4.50
\$3.00
\$4.00
\$3.00
\$4.50
\$3.50
\$4.50
\$3.50
\$4.00
\$3.00
\$1.00
\$3.00
\$5.00
\$3.50
\$4.50
\$0.50

c holidays



MAIN SOUTH ROAD









Learning centre network











m Room

LAM





Customer responses

UPPER RICCARTON
COMMUNITY & SCHOOL **OPEN**
LIBRARY 23 JANUARY 2006

71 Main South Road

Westfield
RICCARTON

Hoyts

PAK'nSAVE

Kmart

Farmers

REBEL REBEL REBEL

BORDERS

BRISCOES
BOOKWARE

 **McDonald's**



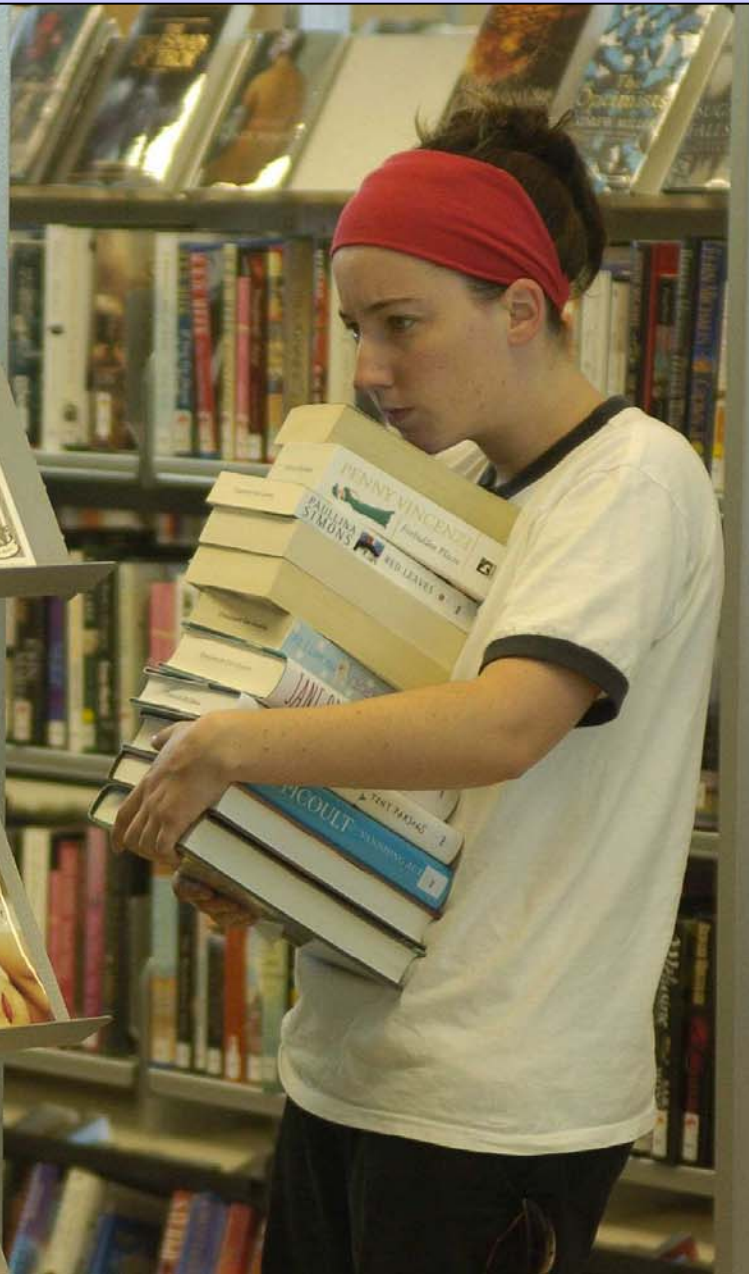
Upper Riccarton Community and School Library

- 1700 visitors on the first day – Monday 23 January
- 30,000 visitors in the first month
- 44,000 items issued in February
- 1000 new members in the first 5 weeks



Upper Riccarton Community and School Library

“My child came home and said he just loved the new library and that I had to come and see it”



Upper Riccarton Community and School Library

“This is like being in a NY bookstore!”

“It’s like being in a toyshop!”

“It’s very quiet...” (They sounded surprised)

“It’s nice and light and airy”



Upper Riccarton Community and School Library

“It rocks! It’s fun to be in here because there are so many good books and stuff to read” (Year 9 girl)

“Completely satisfying in every respect”
(Year 12 boy)

“I’m addicted to this library!” (Year 10 girl)



“On Sunday my husband, son and I went to the library – books for my son, the internet for business purposes for my husband, and a reference book for me.

We had coffee together while reading magazines. We bumped into half the neighbourhood.

What a fantastic community asset!”



















Contact details:

Nicki Moen

Nicki.moen@ccc.govt.nz

Christchurch City Libraries

Christchurch City Council

P.O. Box 1466

Christchurch New Zealand

<http://library.christchurch.org.nz/>

 Christchurch City Libraries
Ngā Kete Wānanga-o-Ōtautahi