

Upper Riccarton Community & School Library Building Project Update 2

Vision for the Upper Riccarton Community and School Library

The vision for the new Upper Riccarton Community and School Library was adopted by the project team and included in the Project Terms of Reference in July 2003. The full text of this vision may be viewed at: <http://library.christchurch.org.nz/UpperRiccarton/Planning/Vision11-06-03.pdf>

- The Community Library will be an important community focal point for a population of about 30,000 residents from the Riccarton, Avonhead, Ilam, Sockburn, Wharenui and Wigram communities.
- The library will also be the Learning Information and Communication Centre for the Riccarton High School population.
- The siting of the library will allow for integration with other school activities and will be recognised as a community facility, which can be easily and safely accessed by the community as a whole.
- The library will house a book and audio-visual collection of 50,000 items, and provide facilities for residents and students to study, access information, acquire information and communication technology and information literacy skills.
- The library will include spaces for reading, socialising, listening, learning, participating and relaxing.
- The design will include a café, comfortable furniture and spaces for community artwork, notices and city information.
- The library will include four flexibly designed learning spaces, including a computer room, which will be available for community learning programmes outside of school hours.

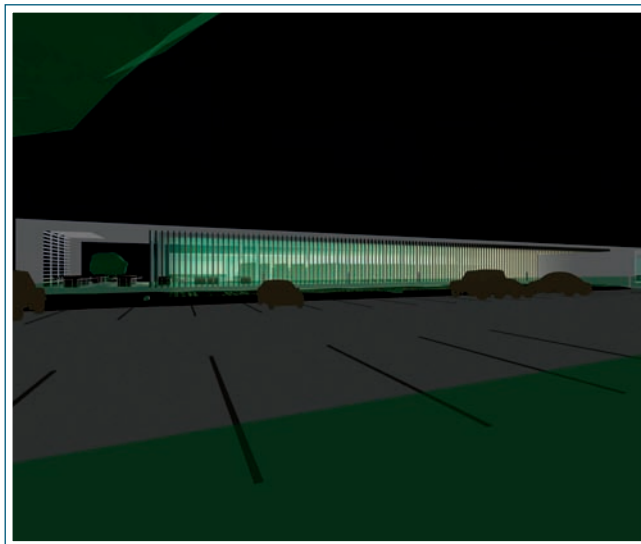


We are confident that we have achieved all of the above – and more. We have been able to build on the tremendous success of the South Christchurch Library and Learning Centre which opened in August 2003 and have included many similar features in the new Upper Riccarton Community and School Library.

- Importantly, our partnership with Riccarton High School has meant that we will be able to provide an integrated focus on education and learning - sharing spaces, resources and expertise which will support lifelong learning.
- Christchurch City Council has provided additional funding for a 100m² community meeting room. This well equipped facility will be available for community use.
- The library will open with a café (Red Café) - with indoor and outdoor seating.
- Programmes and events are being planned for the community.
- The book and audio visual collection is growing by the day and we are confident we will reach our planned target of 50,000 items.
- Quality comfortable furniture has been ordered.
- The library team recruitment is underway.

... and we are counting down to opening day!

Nicki Moen
Manager, Community Libraries
Christchurch City Libraries



Artist's impressions at night.

A place to break down social barriers Gary Coburn, Principal of Riccarton High School.

Mention the completion of the new library and learning centre at Riccarton High School to Principal Gary Coburn and his eyes light up as he talks excitedly about the benefits of the new facility.

"It's going to be a wonderful opportunity for our students to directly interact with their community," he says. "There's also tremendous potential to enhance e-learning opportunities for everyone and our students, staff and members of the public can all gain from the increased opportunities to interact with each other," says Gary.

10,000 volumes of library books will grow to 50,000.

There are many obvious benefits for the school. There are three excellent classroom facilities integrated into the building. The School's existing 8-10,000 volumes of library books will grow to 50,000. Thirty state-of-the-art computers will complement their current resources, greatly increasing access to on-line research. Riccarton High School already has a national reputation for offering advanced e-learning opportunities for its students and these will be further expanded through the new library and learning centre.

"It's not only the additional physical resources and equipment that are so exciting. It's the people who will be in the library. Christchurch City library staff will be able to share their skills and expertise with our students and staff, complementing and enhancing the excellent service our library staff provide. Conversely our staff have skills and expertise to contribute to the wider community too," says Gary.



The mix of school and community also offers many benefits to all library members. Student's talents can be showcased through performances at the library and display space within it and hopefully expertise in the community can be tapped into in order to benefit student learning through the wonderful interface the Library will provide.

"Too often secondary schools are somewhat isolated from their communities and that can create barriers to interaction. There will be increased opportunity for our neighbours to be part of the School and to see just how talented our students are and how keen they are to contribute to their community and environment. The library will provide a place to break down social barriers and encourage positive interaction between all community groups," says Gary.

Riccarton High School has a diverse cultural mix with only 56% of students coming from a New Zealand/ European background. Māori, Pacific Island and International students from a wide range of countries make up the balance. The library and learning centre will provide advanced electronic and traditional forms of information about all these cultures. Other educational facilities in the area, including five primary schools, four secondary schools and the College of Education will also be able to use these resources, which will have an added emphasis on materials for young adults.

"It's all about people being able to easily access information and developing the skills to turn that information into useful knowledge. What better facility could you have for that?" says Gary Coburn.



Riccarton High School Principal Gary Coburn shares his vision for the new library and learning centre

Will the new library and learning centre be what the community wanted?

Architects Richard McGowan and Graeme Finlay from Warren and Mahoney answer some key questions.

Ensuring the new facility is energy efficient was important to all the groups consulted. How has the library been designed to meet this request?

Artificial lighting and heating will be the biggest energy users. The building has been designed with large windows to let in as much natural light as possible, which have been combined with low energy lighting systems on daylight sensors to reduce energy demand. Automatic openers will open windows to allow air flow naturally for most days of the year. An automated fan will be used to help air flow on the hottest days we get each year.

“We’re certain the new library and learning centre will be a useful, dynamic facility and a much loved place.” Richard McGowan.

Automated louvers on the front of the building will track the sun, reducing overheating in summer while capturing useful heat in the winter. Internal concrete walls and floors will retain the sun's heat. Combined with high levels of insulation and double glazing these will keep the temperature stable naturally. Pipes set into the concrete floor will circulate water, which will be cooled in summer and warmed in winter; a very efficient form of temperature control. There is also solar water heating to assist with heating tap water.

What about conserving water? Christchurch has had water restrictions in the past.

Rain water will be collected from the roof and used for toilet flushing. There will also be low use water fittings in the bathrooms such as dual flush toilets, waterless urinals and efficient taps.

Some of the students suggested a two-storey building or one with a mezzanine floor, but the plans show a single storey design. Why is this?

The vision for the new facility was for the building to sit well within its environment, not dominate it – remember the school is in a residential neighbourhood. There was enough space available to go with a single storey building without sacrificing any features.

Additionally, double-storey buildings can be difficult for elderly people, people with physical disabilities and mothers with strollers and prams. They also create challenges for moving books and other resources.

What other features have been incorporated to make this a place people want to visit?

The building actually sits above the ground on a platform which helps to give the building a civic presence and allows views out for library users.

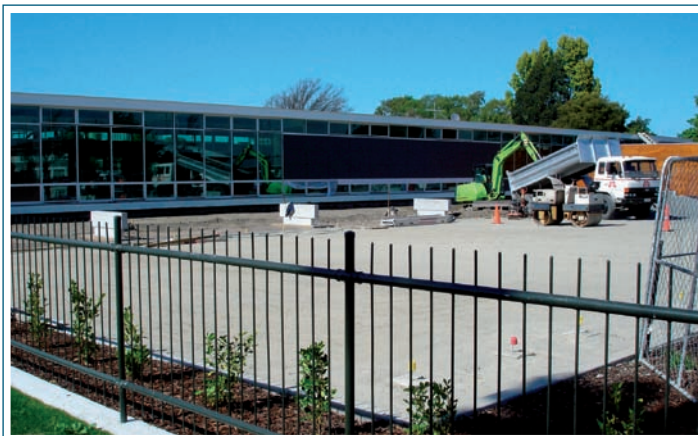
There is a 'porch area' at the entrance, a place for strollers, a place to prepare to enter or leave the building and for groups to meet. The students have their own separate entrance through the learning centre rooms so they won't cause any congestion at the entrance when arriving in class groups.

There is also an open courtyard at the other end of the building, near the café, where visitors can relax and unwind on nice days. The windows are double-glazed to reduce outside noise and the rain garden will provide a peaceful retreat.



Graeme Finlay (left) and Richard McGowan, from Warren & Mahoney, share their vision for the new facility.

Building Progress Photos - October 2005



Did you know?

- It's free to join the Christchurch City Libraries if you live in Christchurch. If you are not currently a member of the Christchurch City Libraries you can join for free at any of our libraries. You will need to bring in TWO forms of valid identification such as drivers licence, passport, bank card etc (one being photo ID); and ONE recent (not older than 30 days) proof of address.
- Upper Riccarton Community and School Library opens 23 January 2006.
- Christchurch City Libraries operates the Central Library, 13 community libraries and one mobile library service. For more information on our network visit <http://library.christchurch.org.nz/Services/Where.asp>
- Christchurch City Libraries has over 1,044,143 items in stock.
- Did you know you can access your account information online and place reserves. Check it out at <http://library.christchurch.org.nz/MyAccount.asp>

You can call us on 941-7923 and ask us about your account, research problems and homework help.

In the December Building Update:

Meet the new library team.

Find out more about the grand opening day.

More progress photos and updates.

Find out more about the Learning Centre.

The history behind the Māori name for the Library.

Key Dates and Information

Projected construction completed: December 2005
Open to the Public: 23 January 2006 with a formal opening ceremony and community gala on the 25 February.

Opening Hours: Monday – Friday 9am – 8pm
Saturday and Sunday 10am - 4pm