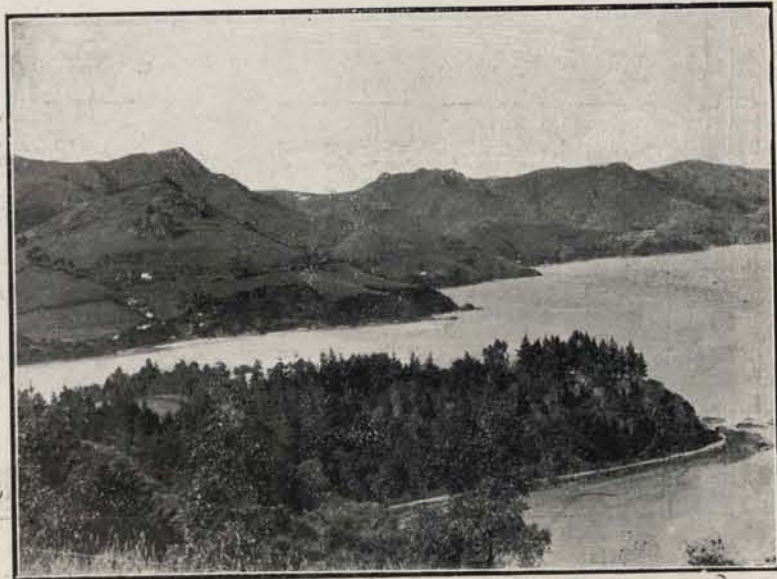


Cholmondeley Memorial Home



Of outstanding events in recent years we must mention the opening of the Cholmondeley Memorial Home for convalescent children. The land, and the total cost of this splendid building were the gift of Mr. H. Heber Cholmondeley, in memory of his wife. When built, it was handed over to the Committee of the Children's Convalescent Cottage, then at New Brighton. This building was sold, and the children transferred to Governor's Bay. The Home has been of the greatest benefit to many children who needed change of air, and to be nursed back to health. The present Matron, Mrs. Bishop, cares for them most lovingly, and indeed each member of the staff, ever since the Home was opened, has given wonderful help. Special mention must be made of the great service

rendered to the Home by Mrs. Wagstaff, secretary and treasurer since it was built. No words can give any adequate idea of what the Home owes to her whole-hearted support and enthusiasm.



A view of Governor's Bay, showing Cholmondeley Home.

THE CHURCH

We find from early records that Services were held at the Bay as early as 1852, for the first baptism was that of William Samuel Manson, born on January 2, 1852, baptized April 18, 1852, by the Rev. W. W. Willock. The first marriage was that of Reginald Orton Bradley (cousin of the present Mr. O. Bradley), to Jennie Manson, on December 21st, 1865, by the Rev. R. R. Bradley.

The first burial was Robert Munro, March 16, 1867.

In 1869 a burial took place which is worth recording. It was that of Mary Crompton, of Little River. The body was carried on foot by eight men from Little River, a distance of 40 miles, in order that it might be buried in a real cemetery. The inscription has disappeared, but the wooden headstone is otherwise well preserved. We honour the men of those days who went through so much that the body of one whom they loved should rest in the beautiful little cemetery attached to the Church.

By the end of 1854, Parish by-laws had been framed and adopted, and the Parishes formed were: Lyttelton, Governor's Bay, Akaroa, Kaiapoi and Christchurch.

In December, 1855, the Church Property Trustees, with the consent of the Bishop Designate (Rev Thos. Jackson), subdivided some of the Parishes as follows:

Lyttelton, into Lyttelton and Sumner.

Christchurch, into Christchurch, Papanui, Riccarton, Lower Heathcote (Christchurch Quay), Upper Heathcote (now Halswell), Middle

Heathcote being part of the Christchurch Parish.

Clergymen in charge of the above Parishes were: Lyttelton, Rev. B. W. Dudley.

Sumner, Rev. G. Cotterill.

Governor's Bay (with Upper Heathcote), Rev. W. W. Willock.

Papanui and Avonside, Rev. C. Mackie.

Christchurch (with Riccarton and Middle Heathcote), Archdeacon Mathias.

Lower Heathcote, Rev. Jas. Wilson.

Akaroa, Rev. W. Aylmer.

Kaiapoi, Rev. J. Raven.

In 1859, a re-arrangement of Parochial Districts took place—the Parish of Riccarton was combined with Halswell, and the Incumbent (Rev. C. Bowen) had his hands full ministering to the three places.

An item of interest in connection with the work at that time comes from one who was a small girl in those days. The Rev. C. Bowen took the monthly services at the Bay, stayed a night or two and journeyed on to Little River. He gave the little girl (now Mrs. Lawrence, Snr., of Fendalton, nee Vigers) a Psalm to learn to say to him on his next visit. In this way she learned the whole of the Psalter.

Up till 1860, services were held in a small sod building below the house where Mr. Griffen now lives. The residents were not satisfied with this building and through Mr W. S. Moorhouse, the Provincial Council gave an allotment of five acres for Church and Glebe at Fernbrook, up the hill behind the present site of the Church. Mr. Potts and others thought that site too far from the road, so he exchanged it for five acres of his own land, where the Church now stands.



- 1—Interior
- 2—Porch
- 3 & 4—Church and Burial Ground
- 5—East Window