

SUMMARY SHOWING NUMBER OF PATIENTS ADMITTED TO HOSPITAL.

Number of patients admitted at Port Said between July 16th to October 18th, 1915	1,809
Number of patients admitted at Salonika between Nov. 12th to March 5th (excluding about 3,000 who attended sick parade, were treated, and returned to Units) ...	3,989
Number of patients admitted at Ismailia between March 20th and May (excluding about 400 who attended sick parade, were treated, and returned to Units) ...	1,321
Total Number of Patients received into hospital	<u>7,119</u>

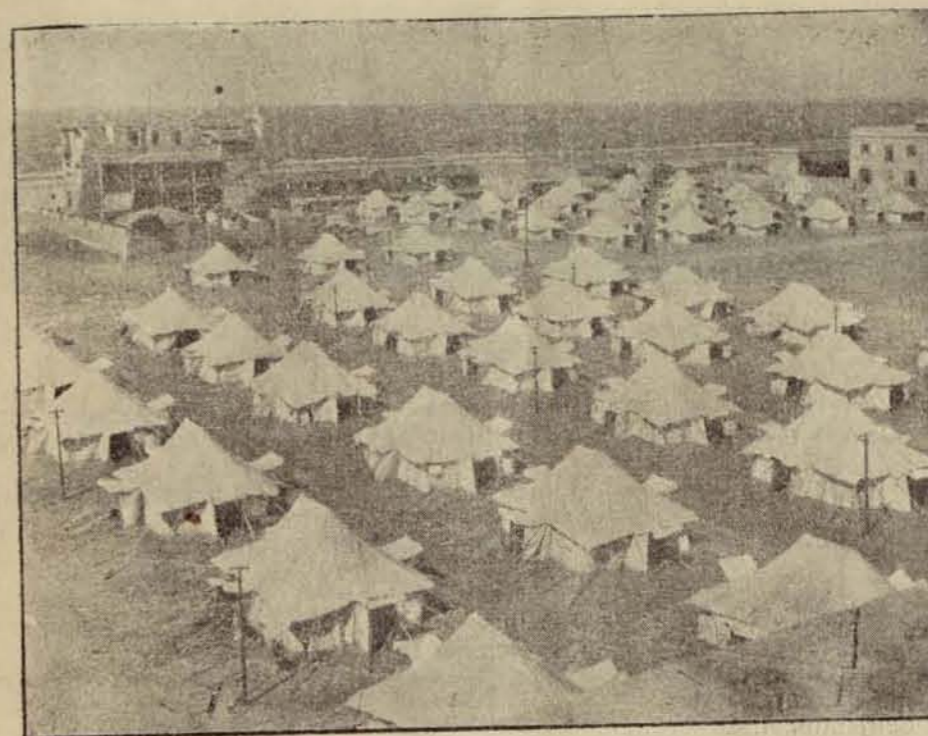
CHANGES IN STAFF.

A full list of the names of the Officers and other ranks who have been with the unit during the year, showing the time of their joining or leaving the unit is appended. If the date of joining is not stated the members have been with the Unit since it commenced in July; those not marked to the contrary are still with the Unit. It may be mentioned in connection with Reinforcements that have arrived from time to time that these have not been sent from any particular hospital or Unit to reinforce us, but have simply been sent to make up our strength by the Director of Medical Services under whom our Unit was working at the time.

In numbers the changes in staff may be briefly summarised (approximately), as follows:—

SUMMARY OF CHANGES IN STAFF DURING THE YEAR,
ENDED MAY 22nd, 1916.

	Other Officers	Ranks	Other Officers	Ranks
Arrived at Port Said	8	86		
Staff added by increase to 400 bed hospital, October, 1915	4	51		
Staff added to replace those lost by sinking of H. M. T. S. "Marquette", November, 1915			21	
Reinforcements, December 1915	1			
Further Reinforcements, February, 1916			16	
Added to Unit at Ismailia, March, 1916	5	0		
Missing, believed drowned, at sinking of H. M. T. S. "Marquette" October, 1915	0	22		
Transferred to Base	0	20		
Invalided from Unit	2	10		
			18	174
Less missing, transferred and Invalided			2	52
Present Strength			<u>16</u>	<u>122</u>



Our Port Said Hospital on the Mediterranean Coast.

COMPLETE LIST OF OFFICERS AND OTHER RANKS WHO HAVE WORKED
WITH No. 1 NEW ZEALAND STATIONARY HOSPITAL
FOR YEAR ENDING May 22nd 1916.

OFFICERS.

Lt.-Col. McGavin, D.J. F.R.C.S., Eng.	Officer Commanding.
Major Wylie, D.S. F.R.C.S., Eng.	
Major Acland, H.T.D. F.R.C.S., Eng.	
Capt. Leahy, J.P.D.	Invalided from Salonika, February 1916.
Capt. Frazerhurst, J.L.	Adjutant.
Capt. Stout, T.D.M. F.R.C.S., Eng.	
Capt. Marchant, E.L. F.R.C.S. Edin.	
Capt. Isaacs, D.N.	Quartermaster.
Capt. Ferguson, W.B.O.	Joined at Port Said, October 1915.
Capt. Harrison, T.	do.
Capt. Teichelmann, E. F.R.C.S., Eng.	do.
Capt. Marshall, A.M.P.	Joined at Ismailia March 1916.
Capt. Willis, W.F.	do.
Capt. Jory, T.	do.