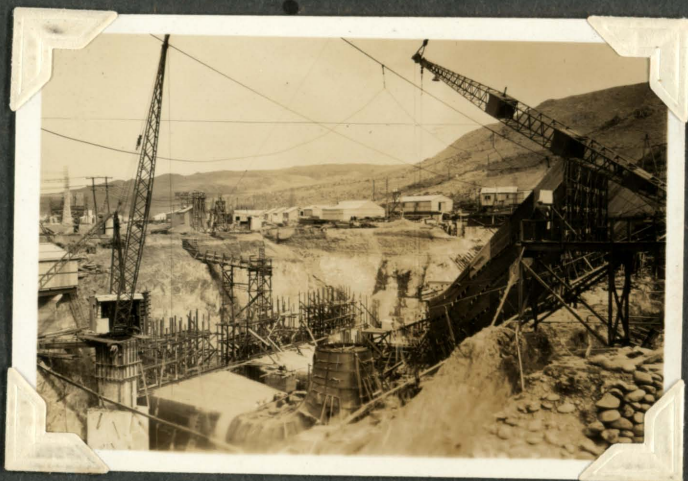


Sept. 29. 1930.

(41)



Powerhouse Foundations.

N°2. steel draft tube in position  
ready for top flange ring.

5 Ton Butters crane & 10 ton  
Insley crane jib working.

Oct. 10. 1930.

(42)



Tower footings for N°144.

50 FT. strain tower.

Powerhouse - Glenavy line.

Power pumps. dewatering holes  
for stub setting.