

Dec. 9.<sup>th</sup>

Waitaki R. crossing.

From Glenavy side.

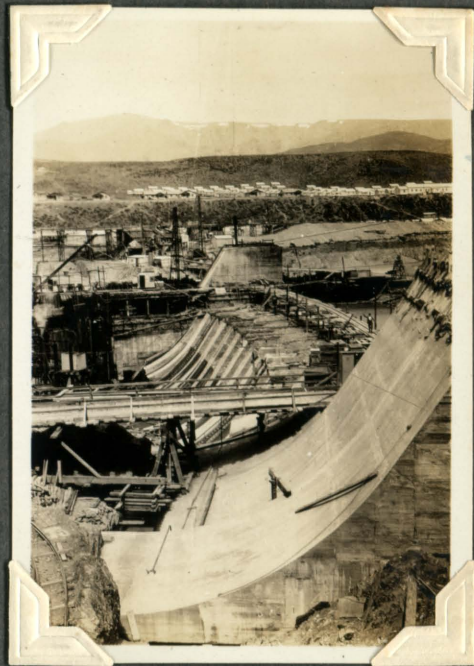
(73)



River crossing will be made  
in 2 main spans of 38 chains  
+ 34 chains on 130 ft. steel  
Towers. Conductor 7/8 Copperweld.  
9/16" dia. 12 tons of cable in crossing.

Dec. 27<sup>th</sup> 1930.

(74)



Canterbury side  
Dam taken to higher  
level.