

Dec. 19th 1930.

Powerhouse-Glenavy line

Strain Tower N^o 74.

(77)



Typical running shingle
footing requiring boxing.

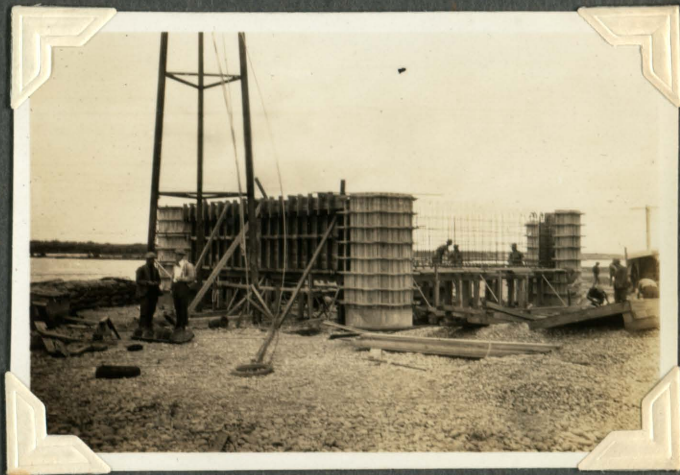
Depth of holes - 13'-4"

Jan'y 19th 1931.

Waitaki River Crossing.

Timaru-Oamaru Trans
Line. - 66 Kv.

(78)



Tie beams to top of
concrete cylinders
(5ft. dia) being cast.
Temporary structure for
wire stringing in foreground.