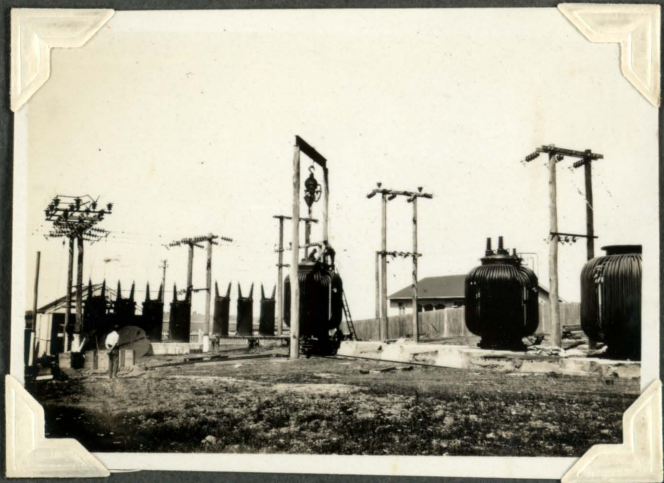


Feb. 19th 1931.

Weston Substation.

Fitting bushings to bank.

(107)



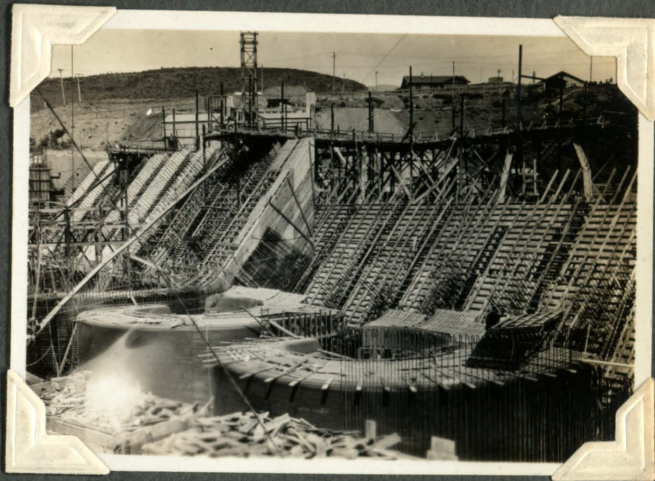
New bank was put into
service on March 1st and
old banks disconnected.

New supply to substation
service transf. also erected.

Feb. 24th 1931.

Powerhouse form work.

(108)



Scroll cases for Nos 1+2.
Turbines nearing completion
Reinforcing being placed.