

March 18<sup>th</sup> 1931. Waitaki River Crossing.

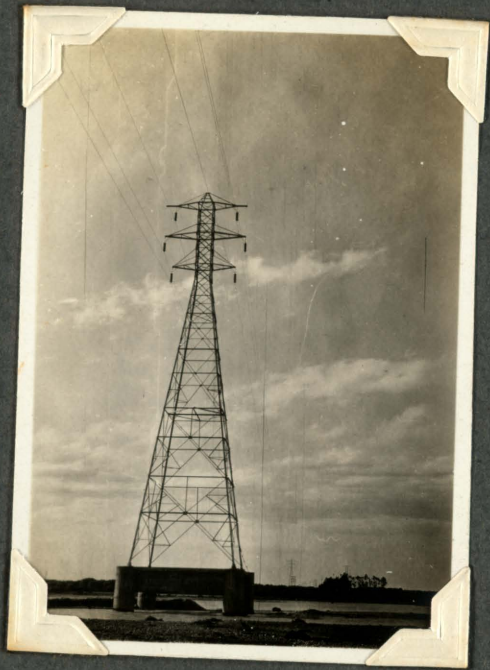
Centre Tower.

(113)



Boxing stripped from  
cylinder foundations.  
Cylinders 5'-6" dia. 28'-5" centres.  
35 Ft. in riverbed. 44 ft overall height.

(114)



Waitaki side,  
Centre + Glenavy Towers  
in distance.