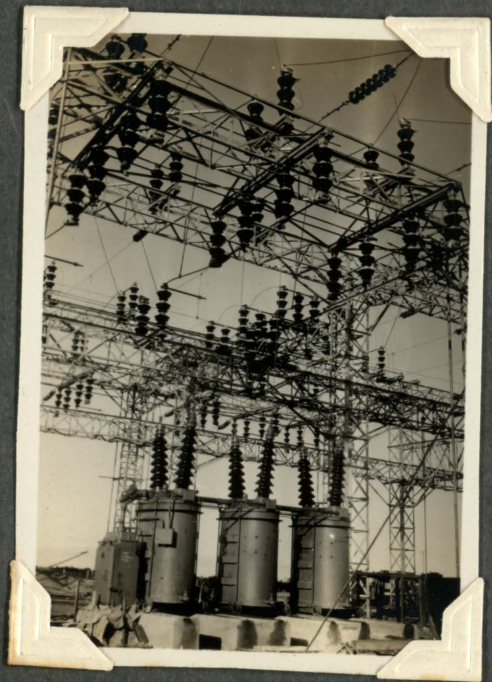


July 13<sup>th</sup> 1931.

Glenavy substation.

(135)

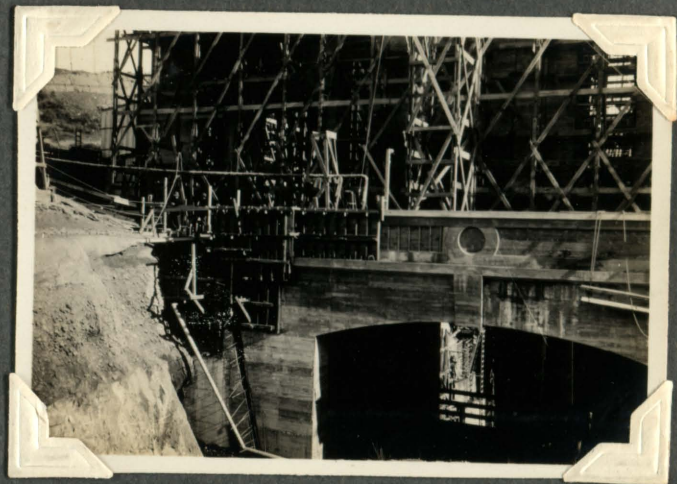


N<sup>o</sup> 1 Waitaki line O.C.B.  
installed and in  
service.

July 30<sup>th</sup> 1931.

Powerhouse building.

(136)



Showing arch over  
tailrace discharge from  
N<sup>o</sup> 5 unit, also parapet  
of transformer platform.