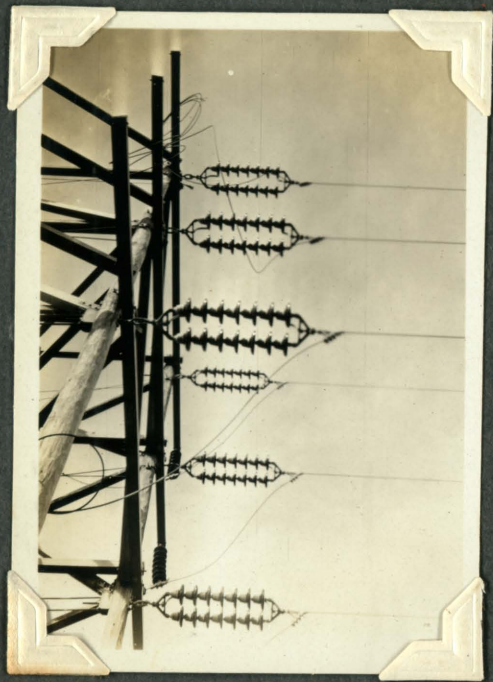


Sept. 17th 1931.

Waitaki River Crossing.

(141)

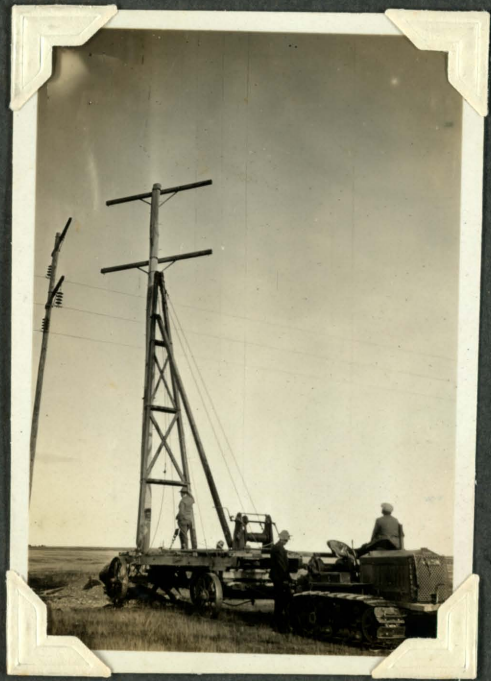


Strain structure - Glenavy.
O.B. Double strain insulators
Nº 26240. East line alive
at 66,000 V.

2nd Timaru - Oamaru line, 66KV.

Erecting poles near Waitaki.

(142)



Cletrac tractor and portable
crane lifting 52 Ft. pole