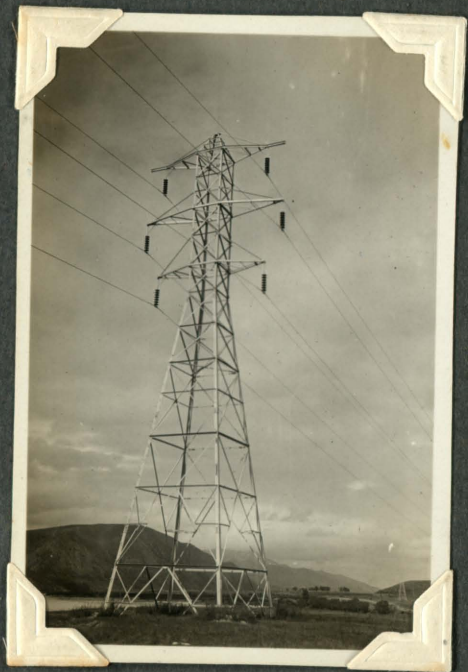


March 11th 1932

Powerhouse - Glenavy line.

(165)



Tower N° 2.

55 Ft. Suspension tower.

Insulators: 7 Unit N° 25620. O.B.

Conductors: 37/102 A.C.S.R. with dampers.

Mar. 9th 1932.

Powerhouse - Glenavy line.

(166)



Tower N° 3.

40 Ft. strain tower.

Insulators: 7 Units N° 26240. O.B.