

Sept. 8. 1933.

Powerhouse and dam.

Downstream side

(183)



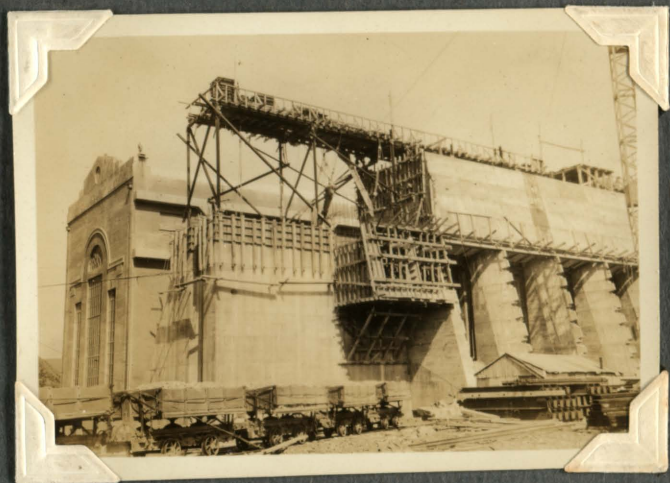
2 Banks of transformers  
erected on platforms for  
outgoing lines.

Draft tubes from turbines discharge  
into tailrace below arches.

Feb. 7. 1933.

Powerhouse intakes.

(184)



Intakes for auxiliary  
sets at higher level  
than main intakes.

CANTERBURY PUBLIC LIBRARY



C8091235X