



THE MOTOR LAUNCH
"Tuariki"
 16 H.P. TWIN SCREW.
 (Weather Permitting)

Will run on THURSDAYS and SUNDAYS between NEW BRIGHTON and SUMNER as per time table below.—

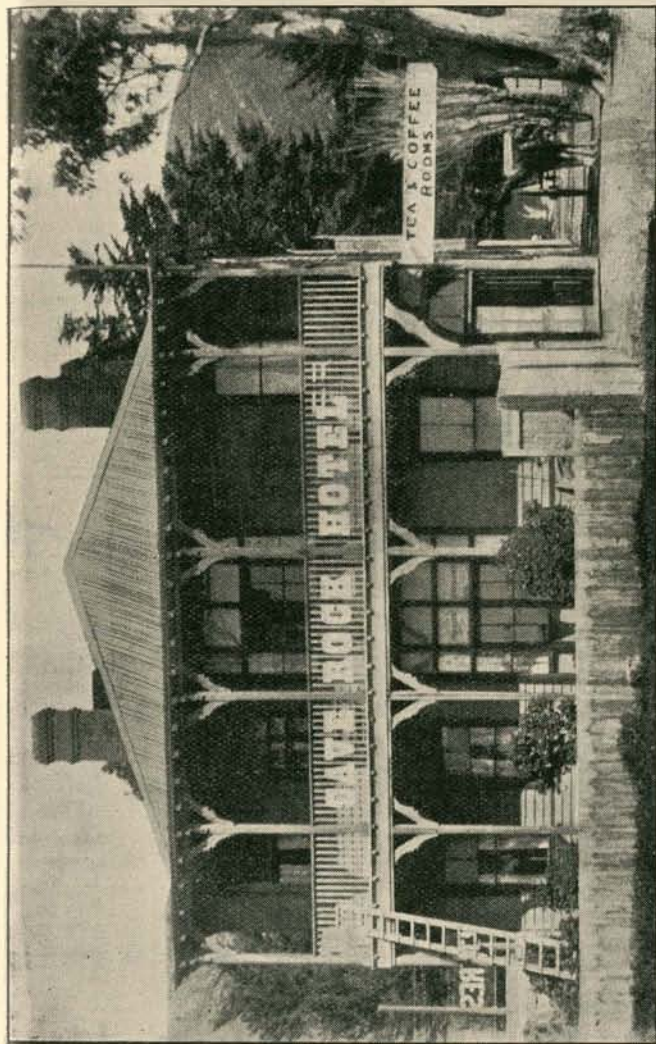
| WEEK DAY: | | | | |
|--------------------------|----|---------|--------|--------|
| THURSDAY—Leaves Brighton | .. | 11 a.m. | 1 p.m. | 3 p.m. |
| " Leaves Sumner | .. | 12 noon | 2 p.m. | 4 p.m. |
| SUNDAY: | | | | |
| Leaves Brighton | .. | 11 a.m. | 1 p.m. | 3 p.m. |
| Leaves Sumner .. | .. | 12 a.m. | 2 p.m. | 4 p.m. |

The Launch may be engaged on other days privately.
 Afternoon Tea may be given on board, and arrangements made with the Manager.
 School Picnics at reasonable rates.
 When the tide runs towards Christchurch the launch leaves Shag Rock jetty, when running to sea Cave Rock jetty.

NOTICE.—Passengers coming down on bicycles and not wishing to take them on board, may leave same in my yard free, third house down Wilson Street from wharf. Passengers with TRAPS AND HORSES may leave same in one of my paddocks, charge 6d., same place as bikes.

FARES—6d. Single; 1s. Return. Bicycles, 6d.

H. R. WALKER, MANAGER.



Cave Rock Hotel, Sumner,
 T. CLARK, Proprietor.

This Hotel enjoys the best sea side view in Sumner and affords First-Class Accommodation to Visitors.
 Terms 6s. per day.
 Arrangements by the week.