

Telephone 1096.

*Clifford*  
Photographic  
Studio

.. 171 Cashel Street ..

Christchurch

Next door to Beath & Co.



Appointments may be made for Sittings between the  
hours of 10 and 4 o'clock.

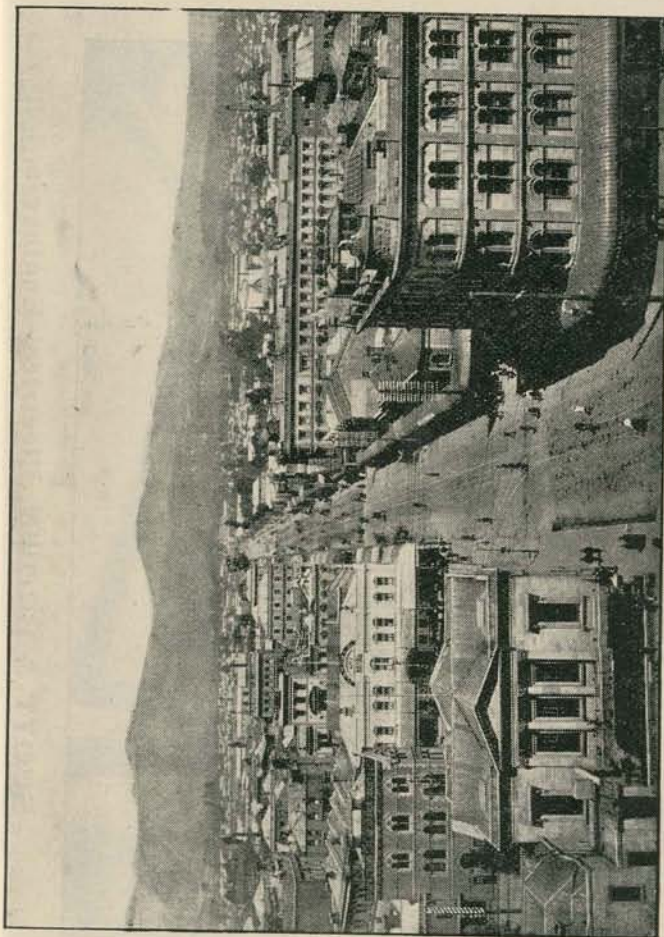


For Specimens, see Portraits in Vestibule finished in

"Sepia Platinotype"



Introduced into Christchurch by Mr. Clifford.



COLOMBO STREET, LOOKING SOUTH.