

Skelton, Frostick & Co.

LIMITED.

IMPORTERS OF ENGLISH AND AMERICAN

BOOTS AND SHOES

ALSO **Leather & Grindery.**

INDENTORS OF ALL LEATHER-WARE AND
GENERAL MERCHANDISE . . .

Our London and New York Offices specially watch and
see to the proper packing and despatch of all goods.



Skelton, Frostick & Co. Ltd.

ARE ALSO THE MANUFACTURERS OF THE CELEBRATED

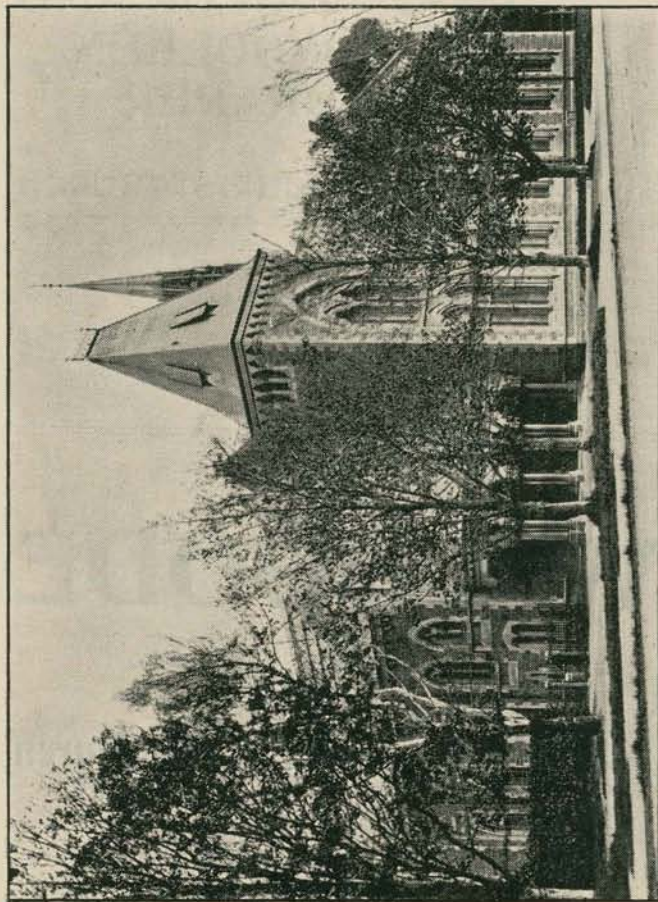
“ZEALANDIA”

The most popular Brand in the Colony. They hold
a reputation for excellence from AUCKLAND to the BLUFF.

The “NUFACTOR”
and “COMMONWEALTH”

BRANDS are also manufactured at
the “ZEALANDIA” FACTORY.

Head Office .. Christchurch, New Zealand.
Branch Office.. Darby Street, Auckland.
London Agency .. 44 St. Mary Axe.



THE CHRISTCHURCH MUSEUM