

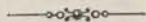
ADVERTISEMENTS.



WOOL

AND

COLONIAL PRODUCE.



THE UNDERSIGNED ARE BUYERS OF

WOOL; TALLOW, SHEEPSKINS,

AND

OTHER COLONIAL PRODUCE,

OR WILL MAKE

LIBERAL ADVANCES ON THE SAME,

CONSIGNED TO THEIR FRIENDS,

Messrs. Dalgety and Co.,

LONDON OR MELBOURNE;

Dalgety, Rattray & Co.,

DUNEDIN, OMARU, AND INVERCARGILL.

DALGETY, BUCKLEY & CO.,

LYTTELTON AND CHRISTCHURCH.

WILLIS, GANN & CO'S



LINE OF



PACKETS

BETWEEN

LONDON & NEW ZEALAND

FIRST-CLASS CLIPPER VESSELS

SAIL REGULARLY EVERY MONTH, OFFERING

SUPERIOR ACCOMMODATION

TO

PASSENGERS LEAVING ENGLAND

FOR THE

PROVINCE OF CANTERBURY.

The undersigned, as Agents for the Line, are prepared to arrange with parties who may be desirous of bringing their friends out to this Colony, by paying either the whole or part of their passage money, or giving security for its payment on arrival of the vessel.

FOR PARTICULARS APPLY TO

DALGETY, BUCKLEY & Co.

LYTTELTON AND CHRISTCHURCH.

THOMAS RAINE,

MANUFACTURER OF TEMONADE.

RASPADE, SODA & POTASH

B B A R B D W A R B B S,

CAMBRIDGE TERRACE WEST,

CHRISTCHURCH.

Established 74, High Street, Sunderland, 1840.

PRIVATE FAMILIES SUPPLIED.

WOLLEDGE & CO.,
GENERAL MERCHANTS,
IMPORTERS, AUCTIONEERS,

& CO., & CO.,

CANTERBURY STREET,

LYTTELTON,

LIVERY

AND

BAIT STABLES,

OPPOSITE THE GAOL,

WINCHESTER STREET,

AND

ALBION HOTEL, LONDON STREET,

LYTTLETON

KENNEL & CORDERY,

Proprietors,

(LATE W. DERRY.)

SADDLE HORSES FOR HIRE.

J. KELLAWAY,

TAILOR & TROUSER MAKER,

(FROM LONDON)

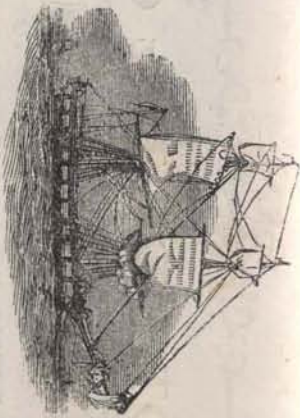
CANTERBURY STREET,

LYTTLETON.

ALWAYS ON HAND A LARGE STOCK OF

READY-MADE CLOTHING.

TERMS CASH.



D. DAVIES,

MERRICHAIN,
NORWICH QUAY,

LYTTLETON.

SHIPPING SUPPLIED.

NORWICH QUAY, LYTTLETON.

EDWIN BENNETT,
BUTCHER,

ROBIN HOOD TAVERN,
NORWICH QUAY, LYTTLETON.

PETER CAMERON,

Takes this opportunity to acknowledge the liberal support he has received from the Public of Canterbury, and begs to state that in future he will endeavour to merit the same Patronage by keeping on hand a Supply of the very best

WINES, SPIRITS, LIQUEURS, ALE, AND STOUT.

A COMMODIOUS BILLIARD ROOM,

Fitted up with one of Thurston's Patent Tables, and every requisite for the Game.

J. B. STOUT,
BUILDER, CONTRACTOR,
CARPENTER & UNDERTAKER,
LONDON STREET,
LYTTELTON.

ON SALE
SASHES, DOORS, AND FRAMES.

TIMBER OF ALL KINDS.

FUNERALS COMPLETELY FURNISHED.

MRS. STOUT,
General Grocery & Drapery Establishment,
LONDON STREET,
LYTTELTON.

Importer of genuine Scotch Manufactures, comprising Worsted, Knitted
Stockings and Socks, Flannels, and Plaidings.

LEEDS HOUSE,

LONDON STREET, LYTTELTON.

WILLIAM WALKER,
BOOT & SHOE MAKER,
AND IMPORTER.

A GOOD SUPPLY AND FIRST-CLASS ASSORTMENT OF

Ladies' and Gentlemen's Boots and Shoes
CONSTANTLY ON HAND.

All kinds of Boots and Shoes made to order on reasonable terms.

THE

Golden Boot and Shoe Establishment,
CANTERBURY STREET, LYTTELTON.

WILLIAM YOUNG

Begs to inform the Inhabitants of Canterbury that he has always on hand
a variety of

FIRST-CLASS BOOTS AND SHOES,

From the Best Manufacturers in Scotland.

In BESPOKE GOODS, the Public can be supplied with Boots and Shoes not
to be surpassed by any other maker in the Colony, and at prices to
suit all classes.

SYDNEY E. WRIGHT,
COMMISSION MERCHANT,
SHIPPING

AND
CUSTOM HOUSE AGENT,
NORWICH QUAY,
LYTTELTON.

T. KELLAWAY,
TAILOR AND TROUSER MAKER,
(FROM LONDON,)
CANTERBURY STREET
LYTTELTON.

ALWAYS ON HAND A LARGE STOCK OF
READY-MADE CLOTHING.

TERMS CASH.

WILLIAM CUMMINS,
PAINTER, DECORATOR, PLUMBER,
AND
PAPER-HANGER,
LONDON STREET,
LYTTELTON.

Paints, Oils, and Colors supplied at moderate
Prices.

RICHARD BRADFIELD,
Fancy Bread & Biscuit Baker,
LONDON STREET,
LYTTELTON.

SHIPPING SUPPLIED.

ALBION HOTEL,
LONDON & CANTERBURY STREETS,
LYTTELTON.

JOHN HILL,

RETURNS thanks to his numerous friends and the public of Lyttelton, the Bays, and on the Plains, for the liberal support he has received since he entered on the above Hotel; it will always be his intention to make

"THE ALBION"
A COMFORTABLE AND CHEERFUL HOME
FOR RESIDENTS AND TRAVELLERS.

ENGLISH ALE & PORTER
BEST BRANDS.

CHOICE WINES & SPIRITS.

EXCELLENT STABLING.

GOOD BEDS.

A GOOD SKITTLE GROUND.

TAYLOR & CO.,
AMERICAN STORE,
NORWICH QUAY,
LYTTELTON.

IMPORTERS & DEALERS

IN ALL SORTS OF

AMERICAN GOODS,

AND

CASH BUYERS

OF

WOOL IN THE GREASE,

SHEEPSKINS & HIDES.

S. N. E. N. O. E. H. I. T.
LONDON STREET,
LYTTELTON.

J. N. FAIRHURST,
Proprietor.

CANTERBURY BOTTLES,

OPPOSITE THE GOVERNMENT WHARF, LYTTELTON.

F. O L S O N,

Begs to intimate to his old Friends and the Public generally, that he has constantly on hand
A CHOICE ASSORTMENT OF

Wines, Spirits, Liqueurs, English Ale and Stout, &c., &c.

And that no effort shall be spared to make the "CANTERBURY" what it was known to be years ago,
A WELL CONDUCTED FAMILY HOTEL.

—
GOOD STABLING.

AGRICULTURAL PRODUCE OF EVERY DESCRIPTION BOUGHT
OR SOLD ON COMMISSION.

LYTTLETON.

IN OR W I C H Q U A Y ,

Wine Factors, &c.,

WINE AND SPIRIT MERCHANTS,
F O O K S & C O . ,

T. M. G E E ,

FANCY BREAD & BISCUIT BAKER,

GENERAL CONFECTIONER,

AND

GINGER BEER MANUFACTURER,

LYTTLETON.

LYTTELTON.

NORWICH QUAY,

MERCHANTS & AUCTIONEERS,

HARGREAVES & CO.,

SMITH, RAIKES, & CO.,

IMPORTERS,

Commission Merchants, Land and Estate Agents,

AUCTIONEERS,

AND STOCK SALESMEN,

LYTTELTON & CHRISTCHURCH.

The Mitre Hotel,
NORWICH QUAY,

LYTTELTON.

The present Proprietor desires to thank the public for the
support given to the

OLD ESTABLISHED HOUSE

since they entered upon it, and to inform their Patrons and
Friends that it will always be their study to merit it by keep-
ing every article of

THE BEST QUALITY,
AND A
WELL-SUPPLIED TABLE,
AT MODERATE CHARGES.

THEIR STOCK OF

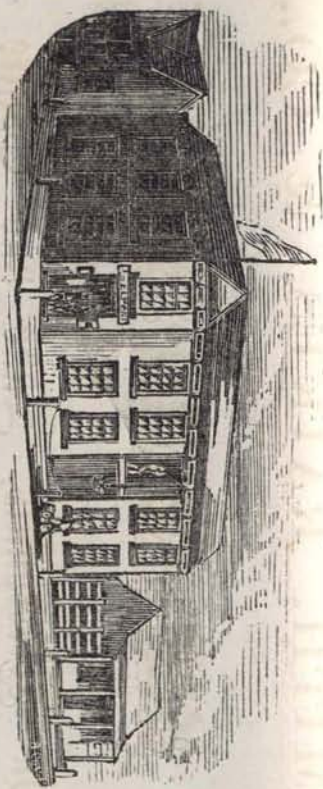
Superior Wines and Spirits,

HAVE BEEN SELECTED WITH EVERY CARE.

THE BILLIARD ROOM

Is supplied with one of the best Tables in New Zealand.

AN ORDINARY AT TWO O'CLOCK EVERY DAY.



ALPHEA'S
AUCTION ROOMS, PRODUCE STORES, AND STOCK SALE YARDS,
Market place, Christchurch.

The undersigned is prepared to Sell by Public Auction or Private Contract every description of Live Stock and
Produce, Merchandise and Private Effects, and has ample Storage Room for Wool, Grain, Cheese, &c.

E. F. ALPERT, Auctioneer, House and Land Agent and Valuer.

CANTERBURY, NEW ZEALAND.

LYTTLETON,

GENERAL MERCHANTS & AGENTS,

HALL, RITCHIE, & CO.,



FREDERICK JENKINS,

CITY STEAM SAW MILLS,

Planning, Milling, & Joinery Works,

BALTIC TIMBER YARD & CEMENT STORES,

SUMNER ROAD AND ST. ASAPH STREET,

CHRISTCHURCH.

B. CORDERY,
SHOEING
AND
GENERAL SMITH,
&c., &c.,
OXFORD & WINCHESTER STREETS,
LYTTELTON.

HESLOP'S
GENERAL DRAPERY STORE,
PORT LYTTELTON,

IS NOTED FOR

SUPPLYING ARTICLES
SELECTED WITH GOOD TASTE,
FOR EACH SEASON,
FROM THE ENGLISH MARKETS.

A. LOUISSON,
COMMISSION MERCHANT,
SHIPPING
AND
CUSTOM HOUSE AGENT.

AUCTION SALE ROOMS,
OXFORD STREET,
LYTTELTON.

SAXON DINING ROOMS,
AND
BOARDING HOUSE,
NORWICH QUAY,
LYTTELTON.
THOMAS LESLIE,
Proprietor.

H. RENSHAW,
GENERAL MERCHANT,
AND
IMPORTER,
OXFORD STREET, LYTTELTON.

VICTORIA HOTEL,

LONDON STREET, LYTTTELTON.

Wines, Spirits, Ale & Beer,

OF THE BEST QUALITY.

Good Beds, and Private Rooms for Families.

B. SYMONDS, Proprietor.

W. WHYMAN,

BOARDING HOUSE KEEPER,

NORWICH QUAY,

LYTTTELTON.

Good Beds and Moderate Charges.

Canterbury Tea Mart,

LONDON & CANTERBURY STREETS,

LYTTTELTON.

G. B. JOHNSON,

TEA DEALER,

GENERAL GROCER,

AND

Importer of Wines & Spirits,

OF SUPERIOR QUALITY.

THE TRADE SUPPLIED

ON LIBERAL TERMS.

Custom House, Shipping, & General
Commission Agent.

LYTTTELTON AGENT FOR

The Liverpool and London Fire and
Life Insurance Company.

J. L. BALESTIEE,
Painter, Glazier, and Paper Hanger,
OXFORD STREET,
LYTTELTON.

ALWAYS ON HAND A LARGE STOCK OF
PAINTS, OILS, AND COLORS,
PAPER HANGINGS,
IN GREAT VARIETY AND AT ALL PRICES,
ALSO,
Tacks, Glue, Whiting, Glass, Putty,
&c., &c.

THOMAS HESTER,

UNDERTAKER,

OXFORD STREET,

LYTTELTON.

FUNERALS COMPLETELY FURNISHED

ON THE SHORTEST NOTICE.

JOHN S. WILLCOX,
House, Land, and General Agent,
CANTERBURY STREET,
LYTTELTON.

MR. C. M. IGGLESDEN,
ARCHITECT & SURVEYOR,
OFFICE—TOWN HALL, LYTTELTON.

PHENIX ENGINE WORKS,
LYTTELTON.

THOMAS GRANGE,
PRACTICAL ENGINEER, MILLWRIGHT,
AND GENERAL SMITH.

Balances adjusted, and Repairs of all kinds promptly executed.

Engines, Boilers, and all kinds of Machinery bought and sold on Commission, Anchors, Knees, Blocks, Gins, Stanchions, and every description of Iron Work for Ships supplied and repaired.

E. OLDFIELD,
BOOT AND SHOE MAKER,
NORWICH QUAY,
LYTTELTON.

ROBERT BELGRAVE,
Boarding House and Dining Rooms,
LONDON STREET,
LYTTELTON.

RICHARD MILSOM,
SODA WATER,
LEMONADE,
GINGER BEER,
AND
CORDIAL MANUFACTURER,
LONDON STREET,
LYTTELTON.

VICTORIA HOUSE,
LONDON STREET,
LYTTELTON.

T. PREECE,

(Late Clarkson and Preece.)

DRAPER & SILK MERCER,

GRATEFUL to the Public for the liberal patronage accorded to the late firm, has the honor to announce that, in future, the business will be carried on by himself; and, having made arrangements to receive

A REGULAR SUPPLY OF
SEASONABLE GOODS

DIRECT FROM THE BEST
ENGLISH & COLONIAL MARKETS,

Respectfully solicits a continuance of their support.

A GOOD SUPPLY OF
FAMILY MOURNING

ALWAYS IN STOCK.

MILLINERY & DRESSMAKING.

MONEY'S

CANTERBURY

Libery and Commission Stables,

MARKET PLACE,

CHRISTCHURCH.

HORSES ON SALE.

HORSES BOUGHT AND SOLD

ON COMMISSION.

Saddle Horses & Condeyances

ON HIRE.

Good Coach Houses, Loose Boxes, Yards and Open Stalls for
Bush Horses,

Parties visiting Christchurch will find every accommodation at the
above Stables.

The Carlton Hotel,

PAPANUI ROAD.

THE above Hotel has every convenience for Families and Gentle-
men, the situation being the most healthy of any Hotel in Christ-
church. Boarders or parties visiting Christchurch will find at

THE "CARLTON"

ALL THE COMFORTS OF A HOME.

WINES & SPIRITS

Of the best quality.

BEER AND ALE

Of the best Brands.

ALSO

GOOD STABLING AND PADDOCK ACCOMMODATION.

Quoits, and other Amusements.

A. W. MONEY,

Proprietor.

SHAILLER'S
LIVERY AND BAIT STABLES,
OXFORD TERRACE

(ADJOINING THE LYTTELTON HOTEL).

First-class Stable Accommodation, and
every attention guaranteed.

H. WAGSTAFF,
CROFTON WORKS,
CROFTON ROAD, CHRISTCHURCH,
C O A C H B U I L D E R ,

CARRIAGES MADE TO ORDER.

REPAIRS, SMITHING, PAINTING, &c., EXECUTED.

HENRY LEAKE,

CHINA,

GLASS, & FANCY GOODS

EMPORIUM,

COLOMBO STREET,

CHRISTCHURCH.

GENERAL ASSORTMENT OF

HOUSEHOLD FURNITURE

ALWAYS IN STOCK.

TRENT & KNAPMAN,

WHOLESALE AND RETAIL

GROCERS, TEA DEALERS,

AND

GENERAL IMPORTERS,

Have always on hand a large and well-selected stock of Teas, Coffees, Groceries, and Oilmen's Stores. Also a large assortment of

FURNISHING GOODS,

Consisting of Glass, China, and Earthenware, Holloware, Brushware, Tinware, Woodware, Cutlery, Baskets of all descriptions, Iron Bedsteads, Door Mats, Hearth Rugs, Felt Carpets, Work Boxes, Writing Desks, Tea Caddies, and a general assortment of

FURNISHING IRONMONGERY,

Imported direct from the Home and Australian Markets.

Goods delivered to any part of Christchurch, and Families waited upon for Orders daily.

PAPANUI ROAD.

City Steam Coffee Mills,

PAPANUI ROAD, CHRISTCHURCH.

The choicest Plantation Coffee Roasted and Ground Daily.

TRENT & KNAPMAN confidently challenge a comparison between their Coffee and any imported or prepared in this Province; all they ask is a trial, which must add to the already large consumption and increasing demand for their article.

Sold by agents throughout the Province in 1lb tinfoil packets, and 2, 3, 6, 20, and 40lb air-tight tin canisters, packed fresh from the mill, and warranted to retain its aromatic and fragrant qualities for any length of time, in any climate.

Wholesale and Shipping Orders executed on the shortest notice and most liberal terms.

TRENT & KNAPMAN.

NEXT THE UNION BANK.

HERBERT SPENCE,

STUDIO,

ANDREW HAMILTON.

MESSRS. ROBINSON & LANGBRIDGE,

ARCHITECTS & SURVEYORS,

ACCOUNTANTS,

Commission and General Business Agents,

HEREFORD STREET,

CHRISTCHURCH.

LICHFIELD STREET EAST,
SAMUEL LOCK,

GERBERGUM,

ACCOUNTANT, VALUER, LAND AND GENERAL AGENT,
COLLECTOR OF RENTS, &C.

AIKMAN, KNIGHT, & CO.,
TIMBER & GENERAL MERCHANTS,

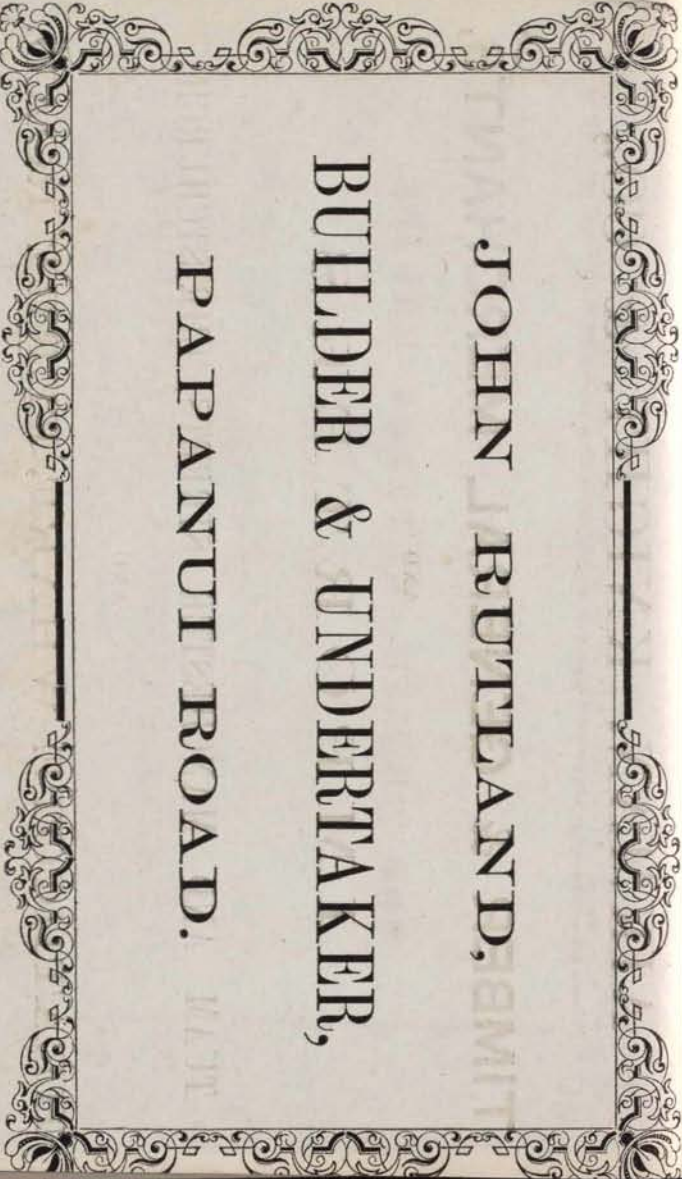
AND

IMPORTERS,

TUAM AND MANCHESTER STREETS, CHRISTCHURCH,

AND

HEATHCOTE WHARF, FERRY ROAD.



JOHN RUTLAND,
BUILDER & UNDERTAKER,
PAPANUI ROAD.



JOHN KING,

TEA DEALER, GENERAL GROCER,

SOAP AND CANDLE MANUFACTURER,

CITY SOAP AND CANDLE WORKS,

CASHIEL STREET, CHRISTCHURCH.

CITY

AUCTION MART,

HIGH STREET,

CHRISTCHURCH.

L. E. NATHAN & CO.,

IMPORTERS,

WAREHOUSEMEN

AND

AUCTIONEERS.

MCLEAN, THIEL, & MYTTON,

MERCHANTS,

ACCOUNTANTS,

AUDITORS,

ARBITRATORS,

COMMISSION,

Land, and Estate Agents,

BONDED STOREKEEPERS, &c.,

TUAM STREET,

CHRISTCHURCH.

COKER'S
COMMERCIAL

HOTEL,

CATHEDRAL SQUARE,

CHRISTCHURCH.

DINNER AT TWO O'CLOCK
EVERY DAY.

WINES AND SPIRITS

OF THE BEST QUALITY.

GOOD BEDS.

LUNCHEON, CHOPS, AND STEAKS.

ECONOMY HOUSE,
IRONMONGERY,

OIL & COLOUR

WAREHOUSE,

FERRY ROAD,

CHRISTCHURCH

THOMAS W. GOURLAY & CO.

THE CANTERBURY
PHOTOGRAPHIC ROOMS,

CORNER OF
HEREFORD STREET,
AND OXFORD TERRACE WEST,

CONDUCTED BY
MR. J. ELSBEE,

Photographic Student of King's College, London.

AND
CHEMICAL STUDENT OF T. SUTTON, ESQ., B.A.

(Author of the Photographic Dictionary, Photographic Notes, &c., and
late Lecturer on Chemistry at King's College).

Mr. E. has great pleasure in informing those friends who
are anxious to have correct portraits of the rising generation,
that he has procured a new Camera (invented and patented
by Mr. T. Sutton, B.A.), by which perfect likenesses of very
young children can be taken instantaneously.

ON SALE,
A number of very superior Field Glasses,

BINOCULARS, MICROSCOPES, STEREOSCOPES,
READING GLASSES,
DUCHESS OPERA GLASSES,
Panoptican Spectacles,
PHOTOGRAPHIC SCARF PINS, &c.

ALSO,
250 Dozen of very Beautiful Stereograph Glass Transparencies.
Paper ditto, of the latest novelties, from 10s. per dozen.

WHITE HART HOTEL,

HIGH STREET,
CHRISTCHURCH.

W. JONES,

In thanking the Public of Canterbury for their patronage,
begs to intimate that he has made extensive alterations, and
hopes by strict attention to make the

WHITE HART

the most comfortable Hotel in the Province.

The New Billiard Room

Is now open, and is kept strictly for the use of Subscribers.
Lovers of this noble game will find every attention and the
best Billiard Table in the Province.

Terms of Subscription:

£2 2s. per annum, payable half-yearly.

WINES, BEERS, AND SPIRITS

OF THE BEST QUALITY.

GOOD STABLING.

W. JONES, Proprietor.

GOLDEN FLEECE



HOTEL,

MARKET PLACE,

CHRISTCHURCH.

JOHN P. OAKES

BEGS most respectfully to inform his friends and the Inhabitants of Canterbury, that he has taken the above Hotel, and hopes to merit a liberal share of their patronage.

THE HOTEL

Has undergone a thorough repair, and is now replete with every convenience for Travellers.

LUNCHEON

Will be on the table every day from Noon to 4 o'Clock p.m.

THE USUAL ORDINARY

Will be continued every Saturday, at One o'Clock p.m. precisely.

J. P. O. begs to inform his Friends and the Public generally, that he intends to keep always on hand a good supply of the best Ales, Wines, Spirits, Liqueurs and Cordials that can be imported from England.

N. B.—Good Stabling, with every care and attention to horses.



MAGENTA.

THIS SPLENDID

DRAUGHT STALLION

BY THE

CLYDESDALE HORSE CANTERBURY,

Imported by Watts Russell, Esq., out of an imported Clydesdale mare, will stand and may be seen at the

GOLDEN FLEECE HOTEL STABLES

DAILY, 1863.

TERMS £5. GROOMAGE 5s.

MAGENTA, bred by E. Hay, Esq., Pigeon Bay, is rising five years old, stands 16½ hands high, perfectly quiet, a good worker, and a sure foal-getter.

Paddocks provided for Mares at the usual rate.

Every care exercised, but no responsibility incurred.

Further particulars can be obtained on application to

THOMAS OAKES,

At the Golden Fleece Hotel, Christchurch



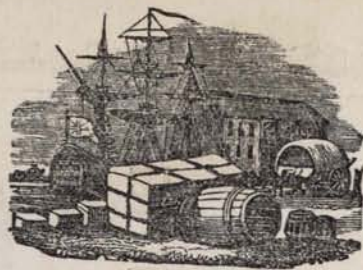
G. C. PETERS,
Saddle and Harness Maker,
PAPANUI ROAD,
OPPOSITE MR. RUTLAND'S STORE.

H A R N E S S

OF ALL DESCRIPTIONS,
MADE TO ORDER.

FIRST-CLASS CART HARNESS,

Always on hand at the lowest possible prices.



W O O L
AND
COLONIAL PRODUCE.

THE undersigned are purchasers of Wool or other Colonial Produce, or will make liberal

CASH ADVANCES

on the same consigned to their Firm in London, or to their Correspondents in Melbourne or Sydney.

They are prepared to undertake the management of Station Business on very moderate terms, to Sell Stock and Stations on Commission, and to supply all Station requisites at the lowest rates.

They are also Importers of all descriptions of Merchandise, for sale on very moderate terms.

WALTON, WARNER, & Co.,
CHRISTCHURCH & LYTTELTON,
AND
GEORGE WARNER & Co.,
L O N D O N.

NICHOLSON,
BUILDER & CONTRACTOR,

CHRISTCHURCH.

TIMBER YARD: CASHIEL STREET EAST.

MR. CHARLES COOPER,
SURGEON DENTIST,

COLOMBO STREET,

CHRISTCHURCH.

A. E. WHITE,

LAND,

STOCK,

AND

General Commission Agent,

CASHEL STREET,

CHRISTCHURCH.

WM. RICHARDSON,

STOCK,

ESTATE,

AND

General Commission Agent,

WORCESTER STREET,

CHRISTCHURCH.

DEBTS PROMPTLY COLLECTED.

GETTIE GIBSON

CHRISTCHURCH.

JOHN CUFF & SON, PROPRIETORS.

JAMES GRANT,
Wine and Spirit Merchant,

COLOMBO STREET,
CHRISTCHURCH.

MR. FRED. THOMPSON,

GENERAL

AGENT.

AGENT FOR THE

NORTHERN

ASSURANCE COMPANY.

CASHEL STREET,

CHRISTCHURCH

THE NORTHERN
ASSURANCE COMPANY.

FIRE AND LIFE.

Capital, £1,259,760.

Accumulated Funds, £625,692—Income, 1862, £250,000.

Life Assurances

The rates charged by this Company are the same as those charged in England.

Policies are issued either with or without participation in the profits of the Company, thus combining all the advantages of a Mutual Association with the security of a Proprietary Company.

Fire Assurances.

Effectuated at the current rates of Premium, and proposals made to the Agent can be completed without any delay whatever.

No Charge made for Policies.

Losses paid without delay or deduction.

Information, Forms of Proposal, &c., may be obtained of the Agent.

Medical Officer for Canterbury—A. C. Barker, Esq.

AGENT FOR CANTERBURY,
FREDERICK THOMPSON, CASHEL STREET.

THE
LIVERPOOL AND LONDON
FIRE AND LIFE
INSURANCE COMPANY.

NOTICE TO HOLDERS OF LIFE POLICIES.

Permission has been given by this Company to the

ASSURED UNDER LIFE POLICIES

To join and be engaged in Actual Service in

ANY VOLUNTEER OR MILITIA CORPS

Within the limits of the Colony in which they are enrolled

WITHOUT EXTRA PREMIUM

But that the Members of such Corps serving beyond the Limits of such
Colony, will subject themselves to

**THE USUAL PENALTIES
FOR MILITARY SERVICE.**

—o:~:~:~:—
WILLIAM BOWLER,

AGENT,

LYTTELTON & CHRISTCHURCH.

THE LIVERPOOL AND LONDON
Life & Fire Insurance Company.

INSTITUTED, 1836.

CAPITAL SUBSCRIBED, £2,000,000.

Reserved Fund, £215,596 11s. 11d.

LIABILITY OF THE COMPANY UNLIMITED.

**PROGRESS OF THE LIVERPOOL AND LONDON
COMPANY SINCE 1850.**

YEAR.	FIRE PREMIUMS.	LIFE PREMIUMS.	INVESTED FUNDS.
1851	£54,305	£27,157	£502,824
1856	222,279	72,781	821,061
1861	360,130	135,974	1,311,905
1862	436,065	138,703	1,417,808

Fire and Life Losses paid by the Company,
since its establishment to the end of 1862 | **£2,571,954.**

This Company presents unusual facilities for Life Assurance.

Policies issued without the delay attendant upon referring to London
or Sydney.

Fire Insurance in all its branches. Premiums varying according
to risk.

Losses arising from Fire, or on Death, promptly paid by the undersigned.

On all subjects connected with the Business of the Company, the
fullest information can be had on application to

WILLIAM BOWLER,

AGENT,

LYTTELTON & CHRISTCHURCH.

JOHN TUNMER,
Nurseryman & Florist,
GROVE NURSERY,
COLOMBO STREET NORTH,

Four Minutes' walk from the Market Place,

CHRISTCHURCH.

ALL KINDS OF
CHOICE FRUITS,

TRUE TO NAME.

A CHOICE VARIETY OF
GREENHOUSE PLANTS

ALWAYS ON SALE.

A FINE COLLECTION OF
CLOVES, PICOTEES, & CARNATIONS

OF SPLENDID COLOURS.

FLOWERS OF ALL KINDS.

All Orders from the Country promptly attended to and
carefully packed.

CANTERBURY
SHOEING FORGE,
MONTREAL STREET.

JOHN JOHNSTON,
Horse-shoer and General Smithy.

AGRICULTURAL MACHINERY
AND
IMPLEMENTS

MADE AND REPAIRED.

MONTREAL STREET,
CHRISTCHURCH,

ADJOINING THE ROYAL HOTEL.

G. COATES,
Watch and Clock Maker,

*Sixteen years a Practical Maker and Workman to the late B. L. Vulliamy,
Her Majesty's Watch and Clock Maker, Pall Mall, London.*

WATCHES, CLOCKS, JEWELLERY, &c.,

Imported direct from the best Makers.

Persons desirous to purchase are respectfully requested to inspect his
Stock, as long experience and personal knowledge enables him to sell the

BEST AND CHEAPEST.

EVERY KIND OF
TIMEKEEPER, JEWELLERY, &c.,

Repaired in a workmanlike manner.

A LARGE ASSORTMENT OF THE VERY BEST

FIELD GLASSES

ON HAND.

COLOMBO STREET,

Opposite the Caledonian Hotel,

ESTABLISHED IN NEW ZEALAND THIRTEEN YEARS.

FOLEY, BROTHERS,
PLASTERERS & SLATERS,

HEREFORD STREET,

NEAR COLLINS' HOTEL, AND OPPOSITE THE
CLUB HOUSE.

Plain and Ornamental Plastering of any kind and
quality executed at reasonable rates.

Work Contracted for in Port Lyttelton, Christchurch,
or any part of the Province.

FOLEY, BROTHERS, prepare Estimates of Plastering, from
Plans and Drawings, for Builders about to tender for work.

FOLEY, BROTHERS, guarantee the excellence of all work
executed by them, and they undertake to make good all
blisters or unsound work, or defects caused in any way by
failure in the plastering executed by them, *free of cost.*

HOUSES KEPT IN REPAIR BY AGREEMENT.

*Plasterers' materials, comprising Laths, Nails, Hair, Lime,
Plaster of Paris, Cement (Roman, Portland, and Keene's),
kept in stock. The Trade supplied.*

Lime Putty for pointing, and Lime and Hair, ready mixed,
always on hand.

◊	◊	£7 15s.	PER HOGSHEAD.
◊	◊	£6 15s.	“
○	○	£5 15s.	“

WHOLESALE PRICES:
 CHRISTCHURCH.
 CANTERBURY BREWERY,
 WARD & CO.,



SADDLERY AND HARNESS ROOMS,
 CASHEL STREET, CHRISTCHURCH.

Every description of

Saddlery, Harness, Whips, Horse Clothing, Blankets, and Driver
 Bags, Bits, Spurs, Brushes, &c., &c., &c.

Direct from the best British and Australian Wholesale Houses, always on hand.

JOHN C. ANGLIS, Importer and Saddlers' Ironmonger.

RIDING SADDLES MADE TO ORDER ON THE PREMISES.

AGENTS FOR THE AUSTRALASIAN ASSURANCE COMPANY,
London Agents—Messrs. HEAD & HOLMES, 2, St. Peter's Alley, Cornhill.
COLOMBO-STREET, CHRISTCHURCH.

Wool Brokers and Auctioneers,
COMMISSION AGENTS,
STOCK, STATION, ESTATE, AND GENERAL
MATSON AND TORLESSE,

AUSTRALASIAN INSURANCE COMPANY.
HEAD OFFICE:
HALL OF COMMERCE, MELBOURNE.

BOARD OF DIRECTORS:—

Chairman—Wm. Nicholson, Esq.
Vice-Chairman—E. L. Montefiore, Esq., J.P.
James Graham, Esq.
W. J. T. Clarke, Esq.
J. M. Joshua, Esq.
E. P. S. Sturt, Esq., J.P.
Secretary—E. L. Montefiore, Esq., J.P.

AGENTS FOR CANTERBURY:

MATSON AND TORLESSE.
OFFICE—COLOMBO STREET, CHRISTCHURCH.

J. MILLSOM,
SODA WATER, LEMONADE,
GINGER BEER AND CORDIAL
MANUFACTURER,
SAINT ASAPH STREET,
NEAR THE FERRY ROAD,
CHRISTCHURCH.

BETHEL WARE,
LINEN DRAPER,
SILK MERCER, &C.,
CHRISTCHURCH.

IMPORTER OF EVERY KIND OF
ENGLISH AND FRENCH SOFT GOODS DIRECT
FROM THE BEST HOME AND CONTINENTAL MARKETS.

WREBMAN'S SURGEON

AND

E. KNAPMAN,

STOCK COMMISSION AGENT,

CHRISTCHURCH AND KAIAPOI.

**J. BAILEY,
BUILDER AND GENERAL CONTRACTOR,**

CASHEL & LICHFIELD STREETS,

CHRISTCHURCH.

SEASONED TIMBER OF ALL DESCRIPTIONS ALWAYS ON HAND.

BURNELL, BENNETT, & SPROT,

WHOLESALE

Wine, Spirit, and Beer

MERCHANTS,

HEREFORD STREET,

CHRISTCHURCH.

BURNELL, BENNETT, & SPROT,

AUCTIONEERS,

STOCK, RUN,

AND

General Commission Agents,

HEREFORD STREET,

CHRISTCHURCH.

RICCARTON

MARKET YARDS.

MESSRS. BURNELL, BENNETT & SPROT

Beg to inform Shippers and Owners of Stock that their

CATTLE AND SHEEP YARDS

Are now ready.

The Yards consist of a good drafting yard, with pens for about
300 HEAD OF CATTLE,

And the Sheep Yards are adapted for drafting and assorting about

2,000 SHEEP,

There are also

PENS FOR CALVES AND PIGS.

From the situation of the Yards, being at the junction of the main roads leading to Christchurch, only one mile from the town, and the care that will be taken to make proper conveniences for assorting without injuring the Stock, Messrs. BURNELL, BENNETT, AND SPROT trust that they will be able to accommodate both buyers and sellers.

Driving to the Yards will be undertaken, and ample assistance in drafting, branding, and yarding, will always be at hand.

A thoroughly experienced judge of Stock, and Stockmen have been engaged for the work.

The Yards will be let at per head for work connected with Stock.

Paddocks on all the roads leading to the Yards.

Every care will be taken of all Stock received for sale.

Advances will be made to Shippers, Owners, &c.,
on all Stock placed in the hands of the Agents for *bona fide* sale, either by private treaty or public auction.

OLLIVIER & SON,

Auctioneers,

LAND, HOUSE, STOCK,

AND GENERAL

COMMISSION AGENTS

OFFICES IN

CASHEL & HIGH STREETS,

CHRISTCHURCH.

Office Hours :

FROM 10 A.M. TILL 4 P.M.

AIKMAN & WILSON,

AUCTIONEERS,

COMMISSION AGENTS,

AND

LAND VALUATORS,

HIGH STREET,

CHRISTCHURCH.

Advances made on Stock and other property placed

in their hands for immediate Sale.

W. D. BARNARD,

AUCTIONEER,

Horse, Cattle, and General

SALESMAN,

CASHEL STREET, CHRISTCHURCH.

Mr. W. D. BARNARD holds Auction Sales at his Repository, every
WEDNESDAY and SATURDAY, at 12 o'clock, of

HORSES, CATTLE, AND STOCK

OF EVERY DESCRIPTION.

THE REPOSITORY

is the Largest and Most Commodious Building in the Southern Hemisphere for the reception and sale of Horses, Carriages, &c., &c., and therefore offers to Importers, Breeders, and others, accommodation unequalled in the Colonies.

Horses are received for private sale, but jobbing or dealing by any one connected with the establishment is strictly prohibited.

The Repository has ample accommodation for ninety horses.

Commission on Sales, 5 per cent.

Horses taken in to Livery at the current rates.

Horses broken in to Saddle, and Double and Single Harness.

Saddle Horses, Carriages, Gigs, and Dog Carts always on hire.

N.B.—Liberal Advances made on every description of Stock.

ENGLISH
NEWSPAPER AGENCY.

Established 1857.

ALBERT T. BRADWELL

Informs the Public of Canterbury that he is prepared to supply

THE HOME NEWS,
THE ILLUSTRATED LONDON NEWS,
BELL'S LIFE,
PUNCH,
SATURDAY REVIEW,
THE TIMES,
EVENING MAIL,
WEEKLY DISPATCH,

And all the British Newspapers to Half-yearly Subscribers.

TERMS CASH.

LABOR MART AND SERVANTS' REGISTRY.

To meet a want urgently felt in the Province, Mr. Bradwell has opened a Registry Office for the supply of Labor of every description.

DOMESTIC SERVANTS,
FARM AND STATION HANDS,
SKILLED MECHANICS,

And workmen of all trades will be treated with on moderate terms.

Employers of Labor living remote from town, by sending a written application for Servants will be promptly supplied.

H. W. READ,
CAB PROPRIETOR,
KILMORE STREET,
CORNER OF DURHAM STREET,
CHRISTCHURCH.

CAB STAND:
Opposite City Wine Vaults,
HIGH STREET.

ORDERS FOR CABS TAKEN AT—
RUDDENKLAU'S, High Street
CALVERT'S, ditto
BUXTON'S, Papanui Road
LOWTHER'S, Tuam Street.

J. LADBROKE,
VICTORIA STABLES,
CASHEL STREET,
CHRISTCHURCH.

Libery & Commission
Stables.

HORSES AND CARRIAGES
ON HIRE.

HORSES BROKEN TO SADDLE
AND HARNESS.

BARBERS' ROOM,

CASHIEL STREET, CHRISTCHURCH,

NEXT THE UNION BANK.

LIVERY STABLES,

WITH PADDOCK ACCOMMODATION.

"CENTRAL HOTEL,"

(LATE STRINGER'S),

COLOMBO STREET, CHRISTCHURCH.

GEORGE H. TRIBE, PROPRIETOR.

BEST GLASS BOWLING TABLES,

AND

AMERICAN BOWLING ALLEY.

GOOD STABLING AND PADDOCKS.

NEATS-FOOT OIL ALWAYS IN STOCK!

MARKET PLACE, CHRISTCHURCH.

AND
IMPORTER,
SADDLER AND HARNESS MAKER,

J. S. BUNTON,

CASSELL BROS,

CASHEL STREET, CHRISTCHURCH.

WILLIAM STRINGER AND CO.,

LINEN AND WOOLLEN

DRAPERIES,

WHOLESALE AND RETAIL.

Direct Importers of Soft Goods from the best English and Foreign Markets.

Gentlemen's, Boys', and Youths' Clothing Made to Measure on the Premises.

M. G. B. POORS,
ARCHITECT, SURVEYOR,
AND
LAND AGENT,
Highfield Street, Christchurch.

ROBERT SYMINGTON,

WHOLESALE

DRAPERY WAREHOUSEMAN

AND
I M P O R T E R,

CATHEDRAL SQUARE CHRISTCHURCH,
AND
NORWICH QUAY, LYTTELTON.

THE NORTH BRITISH
AND
MERCANTILE
FIRE INSURANCE COMPANY.

Chairman :

JOHN WHITE CATOR, ESQ.
(Messrs. J. W. Cator, Son, & Co.)

Deputy-Chairman :

CHARLES MORRISON, ESQ.
(Messrs. Morrison, Dillon & Co.)

Manager :

GEORGE HENRY WHYTING, ESQ.

CAPITAL £2,000,000 STERLING.

ALL RISKS RATED UPON THEIR OWN MERITS.

Losses promptly and liberally settled.

Forms of Proposal and every information will be furnished on application to the undersigned, who has been appointed Agent for the Company in Canterbury.

ROBERT SYMINGTON,
CATHEDRAL SQUARE, CHRISTCHURCH,
AND
NORWICH QUAY, LYTTTELTON.

BRUCE'S
Libery and Bait Stables,
LYTTTELTON & CHRISTCHURCH.
T. BRUCE AND J. COE

Beg to inform the inhabitants of Canterbury that they are running a

PASSENGER CONVEYANCE

BETWEEN

LYTTTELTON AND CHRISTCHURCH

VIA SUMNER,

Starting from the Mitre Hotel, Lyttelton, at 9 a.m. and 3 p.m., and leaving the Booking Office, Gloucester Street, Christchurch, at the same hours; and

Christchurch and Heathcote Valley,

Leaving the White Hart at 8.30 a.m., 9 a.m., 1.30 p.m., and 3 p.m.; and the Heathcote Valley at 9.30 a.m., 10 a.m., 2.30 p.m., and 4 p.m.

GOOD LIVERY AND BAIT STABLES.

SADDLE AND HARNESS HORSES,

AND

CONVEYANCES OF ALL KINDS

For Hire at All Times,

IN

LYTTTELTON & CHRISTCHURCH.

REECE & HISLOP,
GROWERS
AND IMPORTERS OF
AGRICULTURAL, GARDEN,
AND
FLOWER SEEDS.

CANTERBURY
Seed & Implement Warehouse,
COLOMBO & LICHFIELD STREETS,
CHRISTCHURCH.

ALL THE VARIETIES OF GRASS AND CLOVER SEEDS
ADAPTED FOR NEW ZEALAND.

- Garden Seeds.
 - Flower Seeds.
 - Horticultural Implements.
 - Lawn Mowers.
 - Cast-Iron Garden Rollers.
 - Garden Engines.
 - Watering Pots, all sizes.
-

Gishurst's Compound for destroying American Blight.

WOODBURN NURSERY
ANTIGUA STREET,
CHRISTCHURCH,
(ABOUT THREE MINUTES' WALK FROM THE ROYAL HOTEL).

WILLIAM HISLOP

Invites inspection of his Nursery Stock of

FRUIT
AND
FOREST TREES,
ORNAMENTAL TREES,
Flowering & Evergreen Shrubs.

During the planting season of 1864, W. H. will have for sale many varieties of really useful and ornamental Plants, including several varieties of Pines, Cypress, Arbor Vitæ, &c. Also,

Seedlings of the far-famed
WELLINGTONIA GIGANTEA,
HEDGE PLANTS.

HERBACEOUS AND BEDDING-OUT PLANTS,
&c., &c.

CANTERBURY FOUNDRY,

CHRISTCHURCH.

ESTABLISHED 1850.

JOHN ANDERSON,

Iron & Brass Founder,

ENGINEER,

MILL & WHEELWRIGHT, BOILER MAKER,

AND

GENERAL SMITH.

ALL DESCRIPTIONS OF

AGRICULTURAL MACHINERY,

PLAIN AND ORNAMENTAL

GATES, RAILINGS, ETC.,

MANUFACTURED OR REPAIRED WITH

EXPEDITION.

RAILWAY

FOUNDRY,

MANCHESTER STREET,

CHRISTCHURCH.

W. H. BARNES,

IRON & BRASS FOUNDER,

MILLWRIGHT,

ENGINEER, SMITH,

AND

AGRICULTURAL

MACHINE MAKER.

J. C. BROOKE & CO.,

WHOLESALE AND RETAIL

DRUGGISTS,

COLOMBO STREET,

CHRISTCHURCH.

IMPORTERS

OF

PERFUMERY,

PHOTOGRAPHIC CHEMICALS, &c.

HORSE REPOSITORY,

HEREFORD STREET,

CHRISTCHURCH.

HORSES BOUGHT & SOLD

ON COMMISSION.

HORSES BROKEN TO SADDLE

AND

DOUBLE AND SINGLE HARNESS.

SADDLE HORSES,

TWO AND FOUR-WHEEL CARRIAGES,

TO LET.

W. EDDS & Co., Proprietors.



**RAILWAY CHOP HOUSE,
CHRISTCHURCH.**

THOMAS B. TOMPKINS

Begs to intimate to his friends and the public generally that the above Hotel has undergone a complete alteration and improvements in the interior, and that it is now replete with every convenience.

Chops, Steaks, Cutlets, and Soups at all hours.

T. B. T. intends to keep always on hand the best Wines and Ales that can be obtained.

N.B.—Good Stabling, with every care and attention to horses. Horses bought and sold on commission. Saddle Horses and Conveyances always to be had on hire.

S. C. FARR,
ARCHITECT & SURVEYOR,
LICHFIELD STREET,
CHRISTCHURCH

Specifications, Estimates, and Valuations.

**DUNCAN & SON,
SEED MERCHANTS,**

GLOUCESTER STREET,

CHRISTCHURCH.

HAVE ALWAYS ON HAND

**A Choice Collection of
FARM, GARDEN,
AND
FLOWER SEEDS,**

DIRECT FROM THE GROWERS,

Guaranteed true to Name and of the best quality

PRICED CATALOGUES

TO BE HAD FREE ON APPLICATION.

R. BRUNSDEN,
Corn Factor and Seedsman,
GENERAL
COMMISSION AGENT,
AND
VALUER,
MARKET PLACE,
CHRISTCHURCH.

Imported and Colonial
AGRICULTURAL SEEDS.

ALL KINDS OF
MACHINERY AND IMPLEMENTS
ON SALE,
Or Imported to Order.

EDWARD REECE,
GENERAL AND
Furnishing Ironmonger,
BIRMINGHAM AND SHEFFIELD WAREHOUSE,
COLOMBO STREET SOUTH,
CHRISTCHURCH.

AN EXTENSIVE ASSORTMENT OF STOVES,
FENDERS AND FIRE-IRONS.

Kitchen Ranges, Cooking Apparatus, and General
House Furniture.

Sheffield, Table, and Pocket Cutlery.

Gardeners', Carpenters', and other Edge Tools.
Brooms, Brushes, Powder, Shot and Caps, &c., always on hand.

CARPENTERS AND BUILDERS SUPPLIED ON
THE MOST LIBERAL TERMS.

AGRICULTURAL IMPLEMENTS
On Stock or Imported to order.

Bell Hanging, Lock Smithing, and Tin Manufacturing executed on the
premises, on the most approved principles and at the lowest possible
charges, by experienced workmen.

GLASGOW HOUSE.
MRS. WILLIAMS,
MARKET SQUARE,
CHRISTCHURCH.

WHOLESALE AND RETAIL

DRAPER

AND

SILK MERCER,

(Established 1852.)

IMPORTER OF

DRAPERY GOODS

OF THE

Newest Patterns and Best Qualities.

Has always on hand a large and well-selected Stock to
choose from, at very moderate prices, for cash.

SCOTCH TWEEDS,

KNITTING WORSTED,

LINSEYS, SOCKS, &c.

CITY
HAIRCUTTING,
SHAMPOOING
SALOONS
AND
TOBACCONIST
ESTABLISHMENT

CITY BATHS,

COLOMBO STREET, CHRISTCHURCH.

PROFESSOR AYERS,

PROPRIETOR.

MELVILLE HOUSE.

LADIES' SCHOOL.

THIS SCHOOL, CONDUCTED BY

MISS M. G. WILSON,

ASSISTED BY

HIGHLY EDUCATED YOUNG LADIES.

MUSIC, FRENCH AND DRAWING MASTERS

Will be re-opened after the Summer Holidays, on MONDAY, 25th January.

MELVILLE HOUSE,

(Opposite Government Buildings.)

CHRISTCHURCH.

ALBION BREWERY.

H. S. BROWN & Co.,

CASHEL STREET,

CHRISTCHURCH.

BESWICK & BIRCH,

IMPORT AND EXPORT

MERCHANTS,

WOOL BROKERS,

AND

COMMISSION AGENTS

INDENTS

EXECUTED IN THE

HOME MARKETS,

AND

ADVANCES

MADE ON

WOOL

CONSIGNED TO THEIR CORRESPONDENTS IN LONDON.

WOOL, OIL, &c. &c.

THE UNDERSIGNED IS A BUYER OF

WOOL, OIL, TALLOW,

HIDES, SHEEPSKINS,

AND OTHER

PRODUCE,

DELIVERED AT HIS STORES AT

LYTTELTON, CHRISTCHURCH,

RAKAIA SOUTH, OR KAIAPOI,

AND AT

TIMARU, SALTWATER CREEK,

AND OAMARU,

OR ANY OTHER SHIPPING PLACE IN THE

PROVINCE OF CANTERBURY.

HE WILL MAKE

LIBERAL ADVANCES

On Consignments to his Correspondents in London or the Colonies.

Station Supplies of every description always
on hand.

J. DRUMMOND MACPHERSON,
LYTTELTON AND CHRISTCHURCH.

NEW ZEALAND



Steam Navigation Company's

LINE OF

SCREW PACKETS.

THE FAST SCREW STEAMERS

“LADY BIRD,”

“WONGA WONGA,”

“RANGATIRA,”

AND

“STORM BIRD,”

Under engagement with the General Government,

RUN TWICE A MONTH,

To the undermentioned ports:—

DUNEDIN
WELLINGTON
WANGANUI
RAGLAN
MANUKAU
NAPIER

LYTTELTON
PICTON
NELSON
TARANAKI
AUCKLAND
CASTLE POINT.

J. DRUMMOND MACPHERSON,

AGENT,

LYTTELTON AND CHRISTCHURCH.

**NEW ZEALAND
INSURANCE COMPANY.**
FOR FIRE AND MARINE INSURANCE.

Capital, £250,000, in £100 Shares.

With Unlimited Liability of the Shareholders.

OFFICES:

AUCKLAND—FRAZER'S BUILDINGS, CORNER OF QUEEN AND
SHORTLAND STREETS.

BRANCH OFFICES:

MELBOURNE—Messrs. FALLENSTEIN AND McKECHNEY.

SYDNEY—R. GILFILLAN, Esq., Agent, 18, Macquarie Place.

LONDON—Messrs. BOWLEY AND BRISTOW, Agents, 25, Laurence
Pountney Lane.

AGENTS FOR CANTERBURY:

LYTTELTON & CHRISTCHURCH—Messrs. J. M. HEYWOOD & Co.

KAIAPOI—G. C. BLACK.

AKAROA—E. C. LATTER.

TIMARU—H. J. LeCREN.

FIRE:

Insurances may be effected in this Office upon Farm Buildings and
Stock, Mills, Breweries, &c.; Dwelling-houses, Warehouses, Shops,
Stock-in-Trade, &c., &c.

MARINE:

This Office insures Wool and Gold to England at London rates; also,
takes risks either on Ships or Goods for voyage or time at current rates,
for coasting or foreign voyages.

J. M. HEYWOOD & Co., Agents.

LYTTELTON & CHRISTCHURCH.

J. M. HEYWOOD & CO.,

MESSENGERS,

CUSTOM HOUSE & COMMISSION AGENTS,

CATHEDRAL SQUARE, CHRISTCHURCH,

AND

NORWICH QUAY, LYTTELTON.

AGENTS TO THE NEW ZEALAND INSURANCE COMPANY.

**KOHLER'S
CONCERT HALL,
AND
PROMENADE GARDENS,
LINCOLN ROAD,**

CHRISTCHURCH,

(Five minutes' walk from the Royal Hotel).

MR. R. KOHLER

Respectfully informs the inhabitants of Christchurch and surrounding Districts that he has leased the above Grounds and built thereon a

**SPLENDID BALL ROOM,
GYMNASIUM & SHOWER BATH,
RIFLE GALLERY**

(Range 105 Feet)

ARCHERY GROUNDS,

MAZE,

(The only one in the Southern Hemisphere).

**QUOIT GROUNDS
GRAND GALA NIGHTS**

During the Season.

ON SATURDAY AFTERNOONS,

Grand Fashionable Promenade Concert

BY A SPLENDID BRASS BAND,

Assisted by the Brothers Kohler

Public Balls and Private Parties attended by Mr. Kohler's unrivalled
Quadrille Band.

GARDENS OPENED DAILY.

THE
**CHRISTCHURCH
MECHANICS' INSTITUTE,**

Cambridge Terrace and Hereford Street,

Has a Library for circulation and reference. Is supplied with New Zealand and other Colonial and English Newspapers, Magazines, Reviews, &c. &c.

Reading Room for Newspapers open daily from 8 a.m. to 10 p.m.

Library open daily from 10 a.m. to 5 p.m., and from 6 to 9 in the Evening.

Lectures are occasionally delivered on Literary and Scientific Subjects.

The Committee of Management, elected annually by the Members, is, for the year 1863-64, composed as follows, viz. :—

PRESIDENT—HIS HONOR SAMUEL BEALEY, Esq.

TREASURER—MR. GROSVENOR MILES.

LIBRARIAN—DR. PRINS.

SECRETARY—MR. J. CUFF.

COMMITTEE MEN:

MR. C. W. BISHOP,
MR. E. B. BISHOP,
MR. J. BOWMAN,
MR. G. T. CHISNALL,
MR. R. CLEPHANE,
MR. J. CUMBERWORTH,
MR. J. DAYMOND,
MR. E. DENHAM,
MR. G. FLETCHER,
MR. J. FOLEY,

MR. E. FORD,
MR. J. G. HAWKES,
MR. JAS. JOHNSTON,
VEN. ARCH. MATTHIAS,
MR. W. NEEVE,
MR. J. OLLIVIER,
MR. W. H. PHILLIPS,
MR. J. W. SHACKLETON,
MR. W. D. WOOD,
MR. C. F. WORTH.

C. J. READER, CLERK.

MR. TRIPPOCK,

SURVEYOR AND CIVIL ENGINEER

CATHEDRAL SQUARE,

CHRISTCHURCH.

MR. MAXWELL BURY,

Architect and Engineer

GLOUCESTER STREET,

CHRISTCHURCH.

London Clothing Hall,

HIGH STREET, CHRISTCHURCH.

A. ABRAHAM'S,

WHOLESALE AND RETAIL

CLOTHIER.

J. RULE,

VETERINARY SURGEON

AND

COMMISSION AGENT.

HIGH STREET,

CHRISTCHURCH.

MECHANICS' HOTEL,

JAMES FUCHS,

COLOMBO STREET,

CHRISTCHURCH.

Breakfast, from 7 to 9 o'clock
Dinner, from 1 to 2 ..

CHOPS AND STEAKS

TEA AND COFFEE

AT ALL HOURS.

BOARD & LODGING

ON REASONABLE TERMS.

Airy and comfortable Sleeping accommodation
and every attention to secure the satisfaction
of Visitors.

A 1

COMMERCIAL HOTEL,

Cashel and Colombo Streets,

CHRISTCHURCH.

WINES, SPIRITS, ALE, AND PORTER,

OF

THE BEST BRANDS.

TABLE D'HOTE DAILY,

At 1.30 p.m.

*Wedding Breakfasts, Balls, Suppers, Routes, and Picnics
supplied in first-class style, on the shortest notice.*

BLAKE & LIPPARD,

Proprietors.

JONES'S LYTTELTON HOTEL

CHRISTCHURCH.

Visitors to Christchurch and the Gentry of the Province are respectfully informed that the above Establishment (late in the occupation of Mr. C. H. Smith), has undergone extensive

ALTERATIONS AND IMPROVEMENTS.

The Hotel, being detached from the public business, will be found to possess all the quietness of a Family Residence, combined with comforts and luxuries not to be surpassed in Canterbury.

The present Manager has great pleasure in announcing that, amongst the numerous additions, he has added

A FIRST-CLASS RESTAURANT.

ALSO,

Private Apartments for Ladies and Families,

And trusts, with strict attention to the comfort of his guests, to merit a share of patronage and support.

THE CUISINE

Under the able management of Mr. LEOPOLD DENTISCH.

SOUPS, CHOPS, STEAKS, &c., AT ALL HOURS.

WINES, SPIRITS, ALES, & LIQUEURS

OF SUPERIOR QUALITY.

CLEAN WELL-AIRED BEDS.

GOOD STALL STABLING ATTACHED.

B. N. JONES, Proprietor.

City Wine Vaults

AND

REFRESHMENT ROOMS.

J. G. RUDDENKLAU, Proprietor.

COMFORTABLE

BOARD & RESIDENCE

CAN BE OBTAINED ON

THE MOST REASONABLE TERMS.

CHOPS, STEAKS,

TEA AND COFFEE,

PREPARED ON THE SHORTEST NOTICE.

First-Class Wines, Spirits, and Beer,

PASTRY AND CONFECTIONERY.

CALLEDONIAN HOTEL,

COLOMBO STREET, CHRISTCHURCH.

T. WILSON, PROPRIETOR.

Wines, Spirits, Liqueurs, Beer, &c., of the best Brands,

WHOLESALE AND RETAIL.

Bread and Biscuit Baker, Pastrycook and Confectioner.

WEDDING AND CHRISTENING CAKES MADE TO ORDER.

BALLS, ROUTS, AND PARTIES SUPPLIED IN THE MOST EFFICIENT MANNER, AND AT THE SHORTEST NOTICE.

FIRST-RATE BISCUIT FOR SHIPPING.

GEORGE TAYLER,

GENERAL IMPORTER.

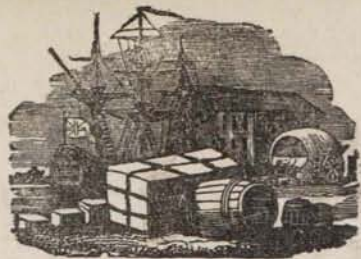
WHOLESALE AND RETAIL DEALER IN

CHINA, GLASS, AND FANCY GOODS

OF EVERY DESCRIPTION.

GROCERIES, OILMEN'S STORES, &c.,

LONDON STREET, LYTTELTON.



THE UNDERSIGNED ARE BUYERS OF

WOOL

AND OTHER

PRODUCTS

AND ARE PREPARED TO MAKE

Liberal Advances on Consignments

TO

ENGLAND, MELBOURNE, AND SYDNEY.

MILES & Co.,

CHRISTCHURCH AND LYTTTELTON.

STATION SUPPLIES ON HAND.

THE UNDERSIGNED ARE PREPARED TO

Well Stock and Stations on Commission,

AND TO UNDERTAKE OTHER

AGENCY BUSINESS FOR STOCKOWNERS.

MILES & CO.,

CHRISTCHURCH AND LYTTTELTON.

LONDON TO NEW ZEALAND.

Messrs. H. T. WILSON & CHAMBERS'

WHITE
STAR
LINE OF



NEW
ZEALAND
PACKETS.

To Sail from London for New Zealand, full or not full,
on the 15th and 25th of every month.

This line includes the following celebrated steam and sailing clippers, all of them owned in the line. The vessels are commanded by men of great experience in the trade, several of them having been employed in her Majesty's postal service:—

ROYAL STANDARD, s.s., new.
RED JACKET.
WHITE STAR.
BLUE JACKET.
CHARIOT OF FAME.
LINGDALE, new.
GOLDEN SUNSET, new.
MIRIAM.
ULCOATS, new.

QUEEN OF THE NORTH, new.
SHALIMAR.
ELECTRIC.
ANNIE WILSON.
GLEN DEVON, new.
ARABIAN.
ALBERT WILLIAM, new.
MERMAID.
SANTON, new.

And other First-class Ships.

Messrs. H. T. WILSON and CHAMBERS call attention to the fact that hitherto the Passenger trade between London and New Zealand has been chiefly conducted by Ship-brokers, who have chartered, from time to time, vessels as required. The advantages that will accrue to the public by the establishment of an independent line of vessels, owned by a Firm who will be responsible for the date of sailing, and for the comfort and well-being of their Passengers, are so manifest as to need no extended notice.

For freight, cabin, intermediate, or steerage passages, apply to the Owners, H. T. WILSON & CHAMBERS, 21, Water street, Liverpool; to WILSON, BILBROUGH & CO., 27, Leadenhall street; or to the undersigned, who are prepared to make arrangements with persons desirous of bringing their friends from England to Canterbury.

MILES & CO., Agents,

LYTTELTON AND CHRISTCHURCH.

G. CLIFF,

B U I L D E R

AND

UNDERTAKER.

ON SALE, ALL KINDS OF

BUILDING MATERIALS,

SLATES,

DOORS AND WINDOW SASHES.

Paint, Oil, Ground and Dry Colors,
Paper-Hangings, Glass, &c.

Town and Country Orders punctually attended to in
all branches connected with the Building Trade.

KILMORE STREET,

AND MARKET PLACE,

CHRISTCHURCH.

SYDENHAM HOUSE,

COLOMBO STREET,

CHRISTCHURCH.

GLASS, CHINA,

AND

EARTHENWARE DEPOT.

WHOLESALE AND RETAIL

Dealer in Tropical and Native Fruits,

PRIVATE PARTIES AND BALLS

SUPPLIED WITH

Glass, China, Lamps, Oils, &c.

ON THE SHORTEST NOTICE.

CHARLES PRINCE,

PROPRIETOR.

AGENT FOR

PAGE'S BATS, BALLS, &c.

BADGES, ESCUTCHEONS, & DEVICES

In China and Earthenware services, executed at the shortest notice, and at a trifling additional cost.

DANN & BISHOP,

IMPORTERS OF

WINES & SPIRITS,

BOTTLED

ALE AND STOUT

MERCHANTS,

COLOMBO STREET,

CHRISTCHURCH.

All Goods delivered Free within
Five Miles round the City.

ALFRED OSBORN,
CAMBRIDGE TERRACE,
CHRISTCHURCH.

CABINET MAKER,
UPHOLSTERER,
AND
UNDERTAKER.

A LARGE ASSORTMENT OF FIRST CLASS

English made Furniture

ALWAYS ON SALE.

FUNERALS

Furnished on the shortest notice.

ALL DESCRIPTIONS OF

FURNITURE

MADE TO ORDER.

J. SUCKLING,
BOOT AND SHOE MAKER,

Leather Seller, &c.,

BRISTOL HOUSE,
CASHEL STREET,
CHRISTCHURCH.

ESTABLISHED 1855.

N. EDGAR,
TAILOR, HATTER,
CLOTHIER,

AND

WOOLLEN DRAPER,
CASHEL STREET, CHRISTCHURCH.

N.B.—Patterns sent Post-free to any part of the Province.

MONSTER
CLOTHING HALL,
HIGH STREET,
CHRISTCHURCH.

HENRY MOSS,
PROPRIETOR.

READY MADE CLOTHING,
TAILORING & OUTFITTING TRADE

IN ALL ITS ITS BRANCHES.

H. M., in soliciting a continuance of the patronage of his Friends, begs to intimate that he has imported a large and splendid Stock of READY MADE CLOTHING, in all the newest styles and of the latest Fashions. Also a superior assortment of WOOLLENS, which will be found in his Bespoke Department.

H. M. has engaged Cutters of ability and experience, and can guarantee a good fit, coupled with moderate charges.

STATION OWNERS

Can be supplied with every article required on liberal terms.

N. B.—A large Stock of Hats, Caps, Hosiery, Neck Ties, &c., &c.

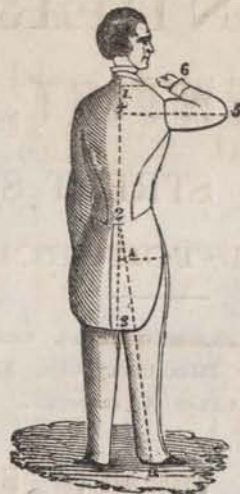
Mechanics' and Working Men's Clothing of the very best description, at the lowest possible prices. Every article is marked in plain figures, from which no deviation will be made. Any article purchased and not approved of will be exchanged, or the money returned without the slightest hesitation.

This Establishment is closed on Saturdays until 5 o'clock, when business will be resumed until 11 p.m.

HENRY MOSS, Proprietor.

MONSTER CLOTHING HALL,
HIGH STREET, CHRISTCHURCH,

SELF-MEASUREMENT.



Directions for Coats. Inches.

From 1 at Neck to 2 at Waist ...
2 to 3 for length of Coat ...
Centre of Back at 4 to Elbow at 5 ...
Continuing on to 6 for length of Arm
Round the muscle of Arm above the
Elbow ...
Round the same below the Elbow ...
Round the Wrist at 6 ...
Round the Chest under the Coat at 7
Round the Waist under the Coat ...

Vests.

From 1 at back of Neck to the
length required in front ...
Round the Chest ...
Round the Waist ...

Trousers.

From the top of the Trousers to the
length required at B ...
From A between the legs to B ...
Round the Waist under the Waist-
coat ...
Round the Hips ...
Round the Leg at A ...
Round the Knee ...
Round the Foot at B ...

Measure for Hat.

The number of inches round the
Head ...

To insure a correct fit, it is necessary to give the measure with exactness, and state whether the party is upright or inclined to stoop. The height is also a good guide.

HENRY MOSS, PROPRIETOR.

N. B.—Gentlemen residing up Country, and sending for Clothing (to guarantee a good fit), will please send measure as above.

D. C. ANDERSON,
DENTIST,

COLOMBO STREET SOUTH,
CHRISTCHURCH.

Many years Assistant to the late
Alexander Nasmyth, Dentist
to the Queen.

The Coraline Vulcanite Base used
when required.

MR. THOMAS HILL,

Member of the Royal College of
Veterinary Surgeons, London;

Hon. Fellow of Veterinary
Medical Association.

ARMAGH STREET,
CHRISTCHURCH.

RESIDENCE:

Cottage at the end of Section next to Dr. Stedman's.

ANDREW LILBURNE,
AUCTIONEER
COMMISSION AGENT

AND

VETERINARY SURGEON,

DURHAM STREET SOUTH,
CHRISTCHURCH.

G. FLETCHER,
Tailor and Woollen Draper,

COLOMBO STREET,

CHRISTCHURCH.

IMPORTER OF WEST OF ENGLAND

SUPERFINE BROAD CLOTHS,
DOESKINS, TWEEDS, ANGOLAS.

Melton's Bedford, Woollen, and Hunting Cords, French Fancy Coatings,
Doeskins, Tweeds, &c.

T. & E. PAVITT,

IMPORTERS,

GENERAL MERCHANTS,

GLOUCESTER STREET,

CHRISTCHURCH.

ANGUS SUTHERLAND,

PAINTER, GRAINER,

PAPERHANGER, &c.,

COLOMBO STREET SOUTH

CHRISTCHURCH.

JONES & SMITH,
Plumbers, Glaziers, Painters,

AND

PAPER-HANGERS,

MARKET SQUARE & DURHAM STREET,

CHRISTCHURCH.

Experienced Tradesmen sent to
any part of the Province.

SIMPSON & MARKS,

TOBACCONISTS

AND

Dealers in Fancy Goods,

HIGH STREET,

CHRISTCHURCH.

G. FURBY,

ZINC WORKER, BELL HANGER,

AND

PRACTICAL GAS FITTER,

GLOUCESTER STREET,

CHRISTCHURCH.

Rain Water Pipes, Gutters, Wind Guards, Chimneys, and every description
of Zinc Work.

MRS. FURBY,

Boarding and Day School,

(Established Six Years,)

TEACHER OF THE PIANOFORTE & HARMONIUM,

GLOUCESTER COTTAGE,

GLOUCESTER STREET, CHRISTCHURCH,

ADJOINING MUSIC HALL.

J. ELVINES,

FRUITERER & GREENGROCER,

DEALER IN

Fish, Poultry, Butter, and Eggs,

COLOMBO STREET,

OPPOSITE MR. E. REECE'S, IRONMONGER.

N.B.—Hotels and Families supplied.

JOHN ATKINSON,

BOOTMAKER,

(FROM LONDON,)

COLOMBO STREET NORTH,

CHRISTCHURCH.

MR. R. ILIFFE,
Surgeon and Accoucheur,

RESIDENCE :

NEXT TO MR. TOMPKINS' STORE,

COLOMBO STREET, NORTH,

CHRISTCHURCH.

W. BRIGHTMORE,
BRICKLAYER & SLATER,

KILMORE STREET WEST,

(BACK OF ROYAL OAK.)

CHRISTCHURCH.

Work in the above branches completed with punctuality and dispatch
in Town and Country.

N.B.—GOOD BRICKS AND LIME FOR SALE.

BALCKE AND BROUARD,
BUILDERS,
HEREFORD STREET EAST,
CHRISTCHURCH.

WILLIAM CARD,
VICTORIA BOARDING HOUSE,
COLOMBO STREET,
CHRISTCHURCH.

THOMAS R. FISHER & CO.,
IMPORT MERCHANTS,
AND
WHOLESALE & RETAIL GROCERS,

HIGH STREET,

CHRISTCHURCH.

Importers and Dealers in China, Glass, and
Earthenware.

MRS. COE'S,
Millinery & Drapery

ESTABLISHMENT,

ALBION HOUSE,
GLOUCESTER STREET,
CHRISTCHURCH.

SPRING, SUMMER, AUTUMN, & WINTER

SHOW ROOMS

In addition to the Establishment, replete with every
FASHIONABLE ARTICLE FOR THE SEASON,
Imported from the most fashionable houses in London
and Paris.

EVERY DESCRIPTION OF
FAMILY MOURNING.

THE
Millinery and Dressmaking

Departments conducted by Mrs. COE, and all orders
attended to with the strictest punctuality.

MAURICE MAYO,

Pastry Cook, Confectioner, & General Baker,

PAPANUI.

BRIDE CAKES MADE TO ORDER.

APOTHECARIES' HALL,
CHRISTCHURCH.

COOK & ROSS,

(LATE TURNBULL & HILSON)

Wholesale & Retail Druggists

FAMILY & DISPENSING CHEMISTS,

MARKET PLACE.

Hope Temperance Hotel,

COFFEE, CHOP, & BOARDING HOUSE,

COLOMBO STREET,

(OPPOSITE THE GENERAL POST-OFFICE)

GOOD ACCOMMODATION for CASUAL VISITORS
AND REGULAR BOARDERS.

C. F. WORTH, PROPRIETOR.

HOUSE OF CALL FOR MECHANICS.

A REGISTRY BOOK KEPT FOR SERVANTS.

PAPER-HANGING DEPÔT,

GLOUCESTER STREET,

CHRISTCHURCH.

W. E. SAMUELS,

DECORATIVE

PAPER-HANGER,

PAINTER,

GLAZIER, WRITER,

AND

GRAINER.

Experienced Workmen sent to all parts of

the Province.

Union Bank of Australia.

LIABILITY OF SHAREHOLDERS UNLIMITED.

Paid up Capital—£1,000,000.

Reserve Fund—£200,000.

Head Office—38, Old Broad Street, London.

SECRETARY :

H. W. D. SAUNDERS, ESQ., (London).

INSPECTOR AND GENERAL MANAGER :

JOHN McMULLEN, ESQ., (Melbourne).

ASSISTANT INSPECTORS :

JOHN SIMPSON, ESQ., (New Zealand.) GEORGE COWIE, ESQ.

AGENTS.

ENGLAND.
The National Provincial Bank of England.
The London and County Bank.
The Bank of Liverpool, Liverpool.
Messrs. Baillie, Cave, Baillie, and Co., Bristol.
Messrs. Miles and Co., Bristol.
The Gloucestershire Banking Company, Gloucester, &c.
The County of Gloucester Bank, Gloucester.
Messrs. Grant, Gillman, and Long, Portsmouth.
The Devon and Cornwall Banking Company, Plymouth.
Messrs. Bolithos, Sons, & Co., Penzance.
Messrs. Forster & Co., Cambridge, &c.
Messrs. Tweedy, Williams, & Co., Truro, &c.
Messrs. Lloyd's & Co., Birmingham.
The Town District Bank, Birmingham.

IRELAND.
The Bank of Ireland.

SCOTLAND.
The Royal Bank of Ireland, Dublin.
The Northern Banking Company, Belfast.
The National Bank of Scotland.
The Commercial Bank of Scotland.
The Union Bank of Scotland.
The City of Glasgow Bank.

INDIA, LONDON AND CHINA.
The Chartered Mercantile Bank of India, London and China.
The Chartered Bank of India, Australia, and China.
Bank of Bengal.
The Bank of British North America.
The Mauritius Commercial Bank.
The Standard Bank of South Africa.
The London and Brazilian Bank.
The London, Buenos Ayres, and River Plate Bank.
Messrs. Frederick Huth, Grunning, & Co., Valparaiso.
Messrs. Hellmann, Brothers, & Co., San Francisco.
Messrs. Russell and Sturgis, Manila.

COLONIAL ESTABLISHMENTS.

BRANCHES AND AGENCIES.

NEW SOUTH WALES.
Sydney.

QUEENSLAND.
Brisbane, Rockhampton.

VICTORIA.
Melbourne, Geelong, Portland, Ballarat, Sandhurst, Castlemaine.

SOUTH AUSTRALIA.
Adelaide, Port Adelaide.

TASMANIA.
Hobart Town, Launceston.

NEW ZEALAND.
Auckland, Wellington, Hawke's Bay—Napier, Nelson, Canterbury—Christchurch, Lyttelton. Otago—Dunedin, Tuaepeka, Wetherstone's, Dunstan's, Southland—Invercargill.

The Bank issues Drafts and Letters of Credit on London, which are negotiable through its various Agents as above, and on its various Branches and Agencies in the Colonies.

General Terms of Business may be ascertained on application at any of the above-named places.

Bank of New Zealand.

Incorporated by Act of the General Assembly.

CAPITAL—£500,000.

HEAD OFFICES—AUCKLAND.

DIRECTORS.

PRESIDENT—JAMES WILLIAMSON, ESQ., M.G.A.
DAVID NATHAN, ESQ. JAMES O'NEILL, ESQ., M.G.A.
GEORGE B. OWEN, ESQ.
THE HON. THOMAS RUSSELL, M.G.A. CHAS. J. TAYLOR, ESQ., M.G.A.
ROBERT WATERTON, ESQ.

AUDITORS.

WILLIAM C. WILSON, ESQ. HENRY WALTON, ESQ., M.L.C.

GENERAL MANAGER.

ALEXANDER KENNEDY, ESQ.

LONDON BOARD.

MANAGING DIRECTOR—FALCONER LARKWORTHY, ESQ.
J. LOGAN CAMPBELL, ESQ. WILLIAM S. GRAHAM, ESQ.
MATTHEW HOLMES, ESQ. ROBT. PORTER, ESQ. WM. BOUTCHER, ESQ.
OFFICES, 50, OLD BROAD STREET.

BRANCHES AND SUB-BRANCHES.

TARANAKI.	BLENHEIM.	TIMARU.
NAPIER.	LYTTELTON.	DUNEDIN.
WELLINGTON.	CHRISTCHURCH.	OAMARU.
WANGANUI.	KAIAPOI.	INVERCARGILL.
NELSON.	AKAROA.	RIVERTON.
PICTON.		

GOLD FIELDS.

WETHERSTONE.	MANUHERIKIA.	KINGSTON.
WAITAHUNA.	QUEENSTOWN.	SHOTOVER.
TOKOMAIRIRO.	TEVIOT.	MOUNT IDA.
DUNSTAN.		

AGENCIES.

SCOTLAND—Commercial Bank of Scotland, National Bank of Scotland, City of Glasgow Bank.	GREENLONG—Bank of Victoria.
IRELAND—National Bank, Provincial Bank of Ireland.	ADELAIDE—National Bank of Australasia.
SYDNEY—Oriental Bank Corporation.	TASMANIA—Bank of Van Diemen's Land.
MELBOURNE—Oriental Bank Corporation.	INLAND TOWNS OF AUSTRALIA, INDIA, CEYLON, MAURITIUS, CHINA, SINGAPORE, &c.—The Oriental Bank Corporation.

The Bank grants Drafts and Letters of Credit, and forwards, for Collection, Bills drawn on any of the above-named places.

Approved bills discounted, cash credits granted, bills of exchange purchased, and advances made upon bills of lading accompanied by policies of insurance.

Rates of interest, and general terms of business, may be ascertained on application.

By order of the Board of Directors.

ALEXANDER KENNEDY, General Manager.

Bank of New South Wales.

INCORPORATED BY ACT OF COUNCIL.

ESTABLISHED 1817.

PAID-UP CAPITAL, £750,000.

RESERVE FUND, £250,000.

Head Office:

SYDNEY, NEW SOUTH WALES.

With Branches in

NEW SOUTH WALES

at

Parramatta Street	Sydney South
Maitland	Newcastle
Tamworth	Bathurst
Orange	Goulburn
Windsor	Mudgee
Forbes (Lachlan)	Adelong
Young (Burrangong)	Albury.

QUEENSLAND.

Brisbane	Ipswich
Towoomba	Rockampton.

VICTORIA.

Melbourne	Geelong
Kyneton	Ballaarat
Castlemaine	Tarrengower
Beechworth	Sandhurst
Wangaratta	Ararat
Chiltern	Creswick
Linton	Inglewood.

NEW ZEALAND.

INSPECTOR, T. O. S. GREEN.

BRANCHES.	Auckland	Manager, J. Woodhouse
	Wellington	„ E. Miller
	Nelson	„ J. D. Busby
	Wanganui	„ F. Savery
Canterbury	{ Christchurch } { Lyttelton } { Kaiapo }	„ J. R. Hill
Otago	{ Dunedin } { Wetherstones } { Dunstan } { and other } { Gold-fields }	„ J. A. Douglas
	Invercargill	„ A. Jamieson

LONDON BRANCH.

DONALD LARNACH, Esq., MANAGING DIRECTOR.

DIRECTORS:

J. S. ATKINS, Esq. SIR DANIEL COOPER.

OFFICE:

37, CANNON STREET, LONDON.

The New Zealand Branches are established for the conduct of all customary Banking and Exchange business. Local Bills of short currency, bearing at least two approved names, discounted at current rates. Bills of Exchange on Great Britain or Australasia, with Bills of Lading against Gold, Wool, or Merchandise, or bearing approved endorsements, negotiated or forwarded for collection. Drafts or Letters of Credit, issued on England, Scotland, or Ireland, and on all the chief towns in Australia, Tasmania, or New Zealand, and on South Africa.

Current Accounts, Cash Credit Accounts, and Fixed Deposit Accounts opened on usual terms.

Rates of Interest, Discount or Exchange, may be ascertained on application at the Bank Offices in Christchurch, Lyttelton, or Kaiapo.

J. R. HILL, Manager.

Bank of New South Wales,
Christchurch, Dec. 18, 1863.

Trust and Agency Company of Australasia, Limited.

CAPITAL—£500,000.

DIRECTORS—William Frederick Baring, Esq., Banker, Sittingbourne; Andrew Bonar, Esq., late Colonial Chairman of the Australasian Trust Company; William Walter Cargill, Esq., Director of the Oriental Bank Corporation; Alfred Denison, Esq., Albemarle Street; Thomas H. Gladstone, Esq., (Messrs. John Gladstone & Co.); Henry Kingscote, Esq., Director of the Canada Agency Association; The Hon. Arthur Kinnaird, M.P. (Messrs. Ransom, Bouverie, and Co.); Philip Twells, Esq. (Messrs. Spooner, Attwoods, and Co.); Henry Loftus Wigram, Esq., Grosvenor Square.

SOLICITORS—Messrs. Tuke and Valpy, 17, Lincoln's Inn Fields; John Mackrell, Esq., 34, Cannon Street West.

BANKERS IN LONDON—Messrs. Spooner, Attwoods and Co., 27, Gracechurch Street; Messrs. Ransom, Bouverie and Co., Pall Mall, East.

AUDITORS—William Millikin, Esq., Secretary, Bank of Australasia; George Gladstone, Esq. (Messrs. W. S. Lindsay and Co.)

GENERAL MANAGER—James Hora, Esq.

REGISTERED OFFICE—31, St. Swithin's Lane, London, E.C.

LOCAL TRUSTEES—Robert Wilkin, Thomas Wm. Maude, Cyrus Davie, Esqrs.

BANKERS—The Bank of New South Wales.

SOLICITORS—Messrs. Johnstone and Williams.

VALUATORS—John Ollivier and Son.

The Directors of this Company are now prepared, through the undersigned, to make immediate advances on mortgage of freeholds, stations, and stock.

The Company will also undertake the negotiation of loans on debentures; the collection and prompt remittance of rents, dividends, interests, and other money; the management of house property and landed estates; the acceptance of powers of attorney; the English agency of local railways and joint stock companies; the receipt and remittance of moneys of friends of colonists in the United Kingdom and elsewhere; the registration in London of Colonial Patents; and any financial business requiring careful attention and a guarantee of good faith.

For prospectus, particulars of rates of interest, commission, &c., apply to
CHARLES ROBERT BLAKISTON, Local Manager.

Office at Messrs. Johnstone and Williams', Solicitors to the Company,
Hereford Street, Christchurch.

NEW ZEALAND TRUST & LOAN COMPANY, LIMITED.

CAPITAL, £500,000.

In 20,000 Shares of £25 each (with power to increase.)

TRUSTEES:

ROBERT BROOKS, Esq., M. P. | G. GRENFELL GLYN, Esq., M. P.
J. J. CUMMINS, Esq.

DIRECTORS:

SIR CHARLES CLIFFORD, Chairman.
SIR J. H. PELY, BART., Deputy Chairman.
CAPTAIN HENRY CARR GLYN, R. N., 15, Eaton Terrace, Eaton Square.
F. G. DALGETY, Esq., Messrs. Dalgety & Co., Gresham Street.
H. SELFE SELFE, Esq., English Agent for the Government of Canterbury, New Zealand.
R. A. BROOKS, Esq., Messrs. Robert Brooks & Co., St. Peter's Chambers, Cornhill.

BANKERS:

IN NEW ZEALAND—THE UNION BANK OF AUSTRALIA.

LOCAL BOARD:

WILLIAM JOHN WARBURTON HAMILTON, Esq.
RICHARD JAMES STRACHAN HARMAN, Esq.
EDMUND SIMMONDS DALGETY, Esq.

This Company is established for the purpose of supplying to New Zealand the advantages already enjoyed by the Colonies of Australia and Canada by the Trust and Loan Societies now existing; and is prepared to make advances in sums of £300 to £10,000 upon Freehold and other Securities at 10 per cent. interest.

Every information afforded on application to

W. D. CARRUTHERS,

GENERAL MANAGER,

Lichfield Street, Christchurch.

THOMAS COOK,
BUTCHER,

CASHEL & MANCHESTER STREETS,

CHRISTCHURCH.

T. H. GREEN,

WHOLESALE & RETAIL

PORK BUTCHER,

HAM AND BACON CURER,

COLOMBO STREET, CHRISTCHURCH,

BACON, HAMS,

Pork & German Sausages, Saveloys, &c.

POULTRY ALWAYS ON HAND.

WHARF HOTEL,
FERRY ROAD.

ALFRED SILK & CO., PROPRIETORS.

FIRST CLASS WINES AND SPIRITS.

BURTON ALE ALWAYS ON DRAUGHT

GOOD STABLING.

GOOD DRY SKITTLE ALLEY.

J. ELLIOT,

GENERAL STOREKEEPER

PAPANUI.

TERMS CASH.

FAMILIES SUPPLIED.

CHRISTCHURCH.

PAPANUI ROAD,

GENERAL STOREKEEPER,

JAMES MANN,

MEDDINGS,

PAPEAUMONUI,

2½ MILES FROM CHRISTCHURCH.

Travellers will find the best accommodation at the above
Hotel, and every attention for their comfort.

GOOD STABLING, STOCK YARD

And an extensive range of Paddocks, with a good supply of Water.

A CATTLE MARKET

Held on the last Tuesday in each Month.

SAWYERS' ARMS HOTEL,

PAPANUI.

F. H. HISCOCKS,

PROPRIETOR.

FIRST-RATE ACCOMMODATION FOR FAMILIES

Beers, Wines, and Spirits of the Best Quality.

WELL AIRED BEDS.

GOOD STABLING, STOCKYARDS & PADDOCKS.

GETONBERT
CHARLES STREET, KAIAPOI,

OPPOSITE THE NEW BRIDGE.

This Hotel is newly built and replete with every accommodation.

M. H. & C. ORAM,

Will spare no pains to meet the requirements and comfort of their customers.

PRIVATE APARTMENTS FOR FAMILIES.

ARRANGEMENTS MADE FOR WEEKLY BOARDERS.

BRIDGE INN,

GREAT NORTH ROAD.

S. TRELEAVEN.

Beers, Wines, and Spirits

OF THE BEST BRANDS.

FIRST-CLASS ACCOMMODATION.

WELL AIRED BEDS.

GOOD STABLING & PADDOCKS.

S. TRELEAVEN,

Miller and Corn Factor,

GLOUCESTER STREET,

CHRISTCHURCH.

W. HORNER,

Shoeing & Jobbing Smith,

PAPANUI.

AGRICULTURAL IMPLEMENTS MADE
AND REPAIRED.

HENRY VALE,
WHEELWRIGHT,
PAPANUI.

DRAYS, TIP & SPRING CARTS, &c.,

MADE TO ORDER ON THE SHORTEST NOTICE.

ALL REPAIRS EXECUTED WITH DISPATCH.

TWO AND A-HALF MILES FROM CHRISTCHURCH.

WALTERS & GIBSON'S

Agricultural Implement Manufacturer,

JOSEPH KEIGHTLEY,

PIRAKI STREET,

ISLAND, KAIAPOI.

EXCHANGE HOTEL, KAIAPOI.

B. T. MISSEN.

GOOD WINES, BEERS, & SPIRITS.

Soups and Shops always ready. Well-Served Beds.

GOOD STABLING & PADDOCK ACCOMMODATION.

DONALD GRANT

Carpenter, Builder, & Contractor

PAPANUI.

KAIKAINUI HOTEL,

PIRAKI STREET,

ISLAND,

KAIAPOI.

L. A. HART,

(Near Northern Hotel.)

DRAPER, CLOTHIER & OUTFITTER,

CHARLES STREET,

KAIAPOI.

STORE ON THE KIOWAI.

THE UNDERSIGNED

FOR THE PURPOSE OF MORE CONVENIENTLY SUPPLYING

STORES

TO THE

SETTLERS OF THE NORTH,

HAVE OPENED A

BRANCH AT LEITHFIELD, KOWAI,

WHERE MAY BE OBTAINED

STATION AND GENERAL STORES,

OF EVERY DESCRIPTION,

AT LOW CURRENT RATES.

INDENTS UPON ENGLISH HOUSES

For any class of Goods,

UNDERTAKEN ON FAVORABLE TERMS.

AGENTS FOR THE

HYDROPULT CO., (LIMITED.)

J. WHITE & Co.,

KAIAPOI,

SALTWATER CREEK, & LEITHFIELD.

CHELTENHAM BOARDING HOUSE

NORTH ROAD,

K A I A P O I.

C. FAIRWEATHER,

FAMILY BOARDING

AND

TRAVELLERS' ACCOMMODATION HOUSE

The above House has undergone thorough repairs, and is now open.

GOOD STABLING AND PADDOCKS

TRAPS AND HORSES FOR HIRE

V.



R.

COACH PROPRIETOR

AND

MAIL CONTRACTOR.

Carts leave the above place at 9 and 11 a.m., and 3 30 p.m., returning from Christchurch at same hours.

Parcels carefully looked after and delivered.

KAIAPOI BRICK WORKS.

MESSRS. BELCHER & FAIRWEATHER,

PROPRIETORS.

GOOD BRICKS

ALWAYS ON HAND,

and can be delivered on advantageous terms in any part of the neighbourhood of Kaiapoi and Christchurch.

WAGGONS AND CARRIERS

BETWEEN

K A I A P O I

AND

CHRISTCHURCH,

OR TO ANY PART OF THE

NEIGHBOURING DISTRICTS.

HORSES AND DRAYS FOR HIRE.

KAIAPOI HOTEL,

CHARLES STREET,

KAIAPOI.

PROPRIETOR, G. DAY.

THIS WELL-KNOWN HOTEL IS
REplete WITH EVERY CONVENIENCE
FOR
TRAVELLERS AND VISITORS.

A Choice Selection of Wines & Spirits

ENGLISH AND COLONIAL

ALE AND PORTER,

ON DRAUGHT AND IN BOTTLE, ALWAYS ON HAND.

A GOOD TABLE KEPT.

Excellent Sleeping Accommodation.

GOOD STABLING.

R. WILSON,
BREAD & FANCY BISCUIT BAKER,

CHARLES STREET, KAIAPOI.

WEDDING AND CHRISTENING CAKES
MADE TO ORDER.

ROBERT HERBERTSON,
BUILDER, WHEELWRIGHT

AND
GENERAL CONTRACTOR,
SALTWATER CREEK.

WOODEND HOTEL,
WOODEND,

Junction of Great North Road and Rangiora Road.

HENRY HINGE AND CO.,
PROPRIETORS.

GOOD STABLING.

STOCKYARDS AND PADDOCKS.

RICKMAN, BROTHERS,
BREWERS,
AND
SPIRIT MERCHANTS,
GENERAL
Commission Agents,
AND
VALUATORS,
KAIAPOI & RANGIORA.

MASONIC HOTEL,
RANGIORA.

Families and Visitors will find good Accommodation and every
attention at the above Hotel.

Wines, Spirits, and Ales of the best always on
hand.

N.B. GOOD PADDOCKS FOR CATTLE AND HORSES, AND A
GOOD STREAM OF WATER ON THE PREMISES.

C. SWINBOURNE, Proprietor.

J. ASHWORTH

Begs to inform the Public that he is

RUNNING A PASSENGER
CONVEYANCE

BETWEEN HIS RESIDENCE,

LITTLE BROWN'S BRIDGE

AND

KAIAPOI,

CALLING AT

SALTWATER CREEK.

ALSO

GENERAL CARRIER

BETWEEN

SALTWATER CREEK

AND

CHRISTCHURCH.

F. BEAN,
GENERAL STOREKEEPER,
RANGIORA.

GENERAL CARRIER
BETWEEN RANGIORA & CHRISTCHURCH.

JOHN WINTERBOURN,
GENERAL TURNER,
PIRAKI STREET,
ISLAND, KAIAPOI.

JAMES ANDERSON,
GENERAL SMITH,

AND
Agricultural Implement

MANUFACTURER,
CHARLES STREET,
KAIAPOI.

F. LILLY,
PLUMBER, GLAZIER,
PAINTER,

AND
PAPER-HANGER,

CHARLES STREET, KAIAPOI,
AND
NORTH ROAD, RANGIORA.

Pumps, Baths, and Water-Closets made
and fixed to order.

Paper-Hangings of the Newest Patterns
always on hand.

PAINTS OF ALL COLORS MIXED TO ORDER.

Country Orders promptly attended to on moderate
terms in any part of the Province.

THE OLD ESTABLISHED HOUSE,
KNOWN AS
THE "LION,"
AT
RANGIORA.

THE undersigned begs respectfully to inform the inhabitants of this District, and the Public generally, that he has taken the above Old-Established House, where he intends to add to its reputation by making it a

REAL PUBLIC CONVENIENCE,
and will always keep in stock a
SUPERIOR CLASS OF
Wines, Spirits, Beer, Ales,
ETC.

Travellers or Visitors,
requiring accommodation, will find the **COMFORTS**
OF A HOME.

THE STABLING
COMPRISES
Eleven Stables and Two Loose Boxes.

The rest of the Outbuildings are extensive, and suited to the wants of a good Hotel. A **CAPITAL PADDOCK** attached.

THOMAS WYCHERLEY,
PROPRIETOR.

E. C. LATTEK,
MERCHANT AND SHIP AGENT,
AKAROA,
CANTERBURY, NEW ZEALAND.

Agent in Akaroa for the New Zealand Insurance Company.

JOHN BESWICK,
AUCTIONEER,
MERCHANT & COMMISSION AGENT,
TIMARU,
CANTERBURY, NEW ZEALAND.

AKAROA.
FRENCH HOTEL

JACOB WAECKERLE,
PROPRIETOR.

LIVERY & BAIT STABLES,
WITH
GOOD Paddock ACCOMMODATION.

FAVORITE
Saddle Horses for Ladies & Gentlemen,
ALWAYS READY TO LET ON HIRE.

The Hotel is pleasantly situate at the entrance of the Town, surrounded by beautiful and picturesque Scenery, has good accommodation for Visitors and Travellers, separate Bedrooms and a well-supplied Table, with a

FIRST CLASS STOCK OF
WINES, BEER, SPIRITS, &C. &C.

N.B. A LARGE AND WELL-STOCKED
FRUIT GARDEN,
FOR THE USE OF VISITORS.

COMMERCIAL HOTEL,
AKAROA.

OCKFORD & ROBERTS, PROPRIETORS.

This Hotel, situated opposite the Jetty, offers to Visitors unsurpassed accommodation. The Wines, Beers, and Spirits will be found of the best quality.

Pleasure Boats for Hire, with steady and experienced Boatmen.

RICHARD MORSE,
BOOT AND SHOE DEPOT,
PIRAKI STREET,
ISLAND, KAIAPOI.

R. M. begs to inform his neighbours and friends that they can get a good and cheap article made to order at his

BOOT & SHOE DEPOT,
PIRAKI STREET, KAIAPOI.

H. BLACKETT,
RANGIORA,

HAS ALWAYS ON HAND A LARGE STOCK OF

GENERAL STORES,

CONSISTING OF

Groceries, Oilmen's, and Provision Stores,

IRONMONGERY,

OF EVERY DESCRIPTION.

Britannia Metal, German Silber, and Electro-Plated Goods.

CROCKERY, GLASS, AND CHINA.

Beers, Wines, and Spirits, of the best Brands.

DRAPER AND CLOTHIER.

Station Masters are respectfully invited to inspect the above Stock.

FRITZ JULIUS KETTENBURG,

Shoeing & Hobbing Smith,

RANGIORA.

Agricultural Implements made & repaired.

STEPHENS' HOTEL,

HAREWOOD ROAD, RANGIORA.

S. STEPHENS, PROPRIETOR.

WINES AND BEERS OF THE BEST QUALITY.

WELL-AIRED BEDS.

W. SANSOM

Begs to inform the public of RANGIORA that he has added to his business as Baker and Draper, that of

GROCERY,

and hopes, by keeping the best goods of every description, to merit a proportionate increase of patronage.

**WILLIAM E. IVORY,
NURSERY, RANGIORA,**

Begs to inform the Settlers of the Ashley, Mandeville, and Oxford Districts that he will have on sale during the ensuing Autumn and Winter, a fine stock of the choicest

FRUIT TREES,

Including Apples (warranted free from blight and true to name), Pears, Cherries, Plums, Peaches, Nectarines, &c.

RHUBARB, ASPARAGUS, AND SEA-KALE.

**JAMES D. GARWOOD,
GENERAL STOREKEEPER
AKAROA.**

Agent for 'Lyttelton Times' & 'Canterbury Standard'

BRUCE'S HOTEL, AKAROA

G. SCARBROUGH, PROPRIETOR.

Visitors to Akaroa will find at this Hotel First-class Accommodation and Unexceptionable Fare.

N.B. Paddock and Stabling for Horses.

**T. FELTHAM,
NURSERY & SEEDSMAN,
AKAROA.**

ON SALE, 1, 2, 3, & 4 YEARS' SUPERIOR GRAFTED
FRUIT TREES.

Persons giving orders to T. F. may depend upon the same being executed with punctuality and despatch.

Wholesale and Retail Dealer in Fruit.

HENRY G. WATKINS,
DRUGGIST,

Wholesale & Retail Dealer in

JAMS, JELLIES, & FRUITS
AKAROA.

RASPBERRY & OTHER SYRUPS.
GRAFTED FRUIT TREES.

H. G. W. has for many years supplied the public with Jams and Syrups
which are unrivalled in their exquisite flavor and quality.

CRITERION HOTEL,
AKAROA.

T. ADAMS, PROPRIETOR.

The accommodation at this Hotel will be found unexceptionable. Visitors will find the Comfort and Privacy of a Home.

GOOD
PADDOCKS & STABLING.

T. BUSH,
UNDERTAKER,

Cabinet Maker, Upholsterer, &c.,

NILE STREET WEST,

NELSON,

OPPOSITE THE "GOLDEN FLEECE" HOTEL.

CLAPHAM NURSERY,
HARDY & TORY STREETS,
NELSON.

WILLIAM HALE,

Grower and Importer of all kinds of Garden
and Agricultural Seeds.

PRICED CATALOGUES OF SEEDS AND PLANTS SENT POST-FREE ON APPLICATION.

**N.B.—Seed Warehouse, opposite
Post-Office.**



WOOL
AND
COLONIAL PRODUCE.

THE UNERSIGNED ARE

**BUYERS OF WOOL,
HIDES, SHEEP SKINS,
AND OTHER PRODUCE,**

Delivered at Nelson; the Beaver, and Boulder Bank, Marlborough; and will make

CASH ADVANCES

ON CONSIGNMENTS TO THEIR AGENTS,

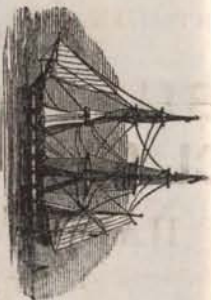
Messrs. GILCHRIST, WATT, & Co.

SYDNEY;

„ REDFERN, ALEXANDER & Co.,

LONDON.

NATH. EDWARDS & CO.,
MERCHANTS, NELSON.



MESSRS. SHAW, SAVILLE & CO.'S
PASSENGER LINE OF PACKETS,
FROM
LONDON TO NEW ZEALAND.

The Undersigned, Agents for the above Line of Ships, are prepared to make arrangements with Settlers who may wish to bring their Friends from England to this Colony, and to receive Guarantees for Payment of Passage Money upon arrival, at very Reduced Rates.

NATH. EDWARDS & CO.,
NELSON.

A. W. SCATFEE,

(LATE NASH & SCATFEE.)

Merchant, Auctioneer, Ship & Insurance Broker,

AND

GENERAL COMMISSION AGENT,

BRIDGE STREET,

NELSON, NEW ZEALAND.

W. C. HODGSON,
Land, Estate, & General Commission Agent,

TRAFALGAR STREET,

NELSON.

JAMES ROCHFORD,
ARCHITECT AND SURVEYOR,
HARDY STREET,
N E L S O N .

G. SHEPPARD,
SADDLE AND HARNESS MAKER,
TRAFALGAR STREET,
N E S O N .

Saddlery of every description of the best quality, at
reasonable Prices.

Country Orders promptly attended to.

DUNDAS HOUSE.

THOMAS ASKEW,

GENERAL STOREKEEPER,

&c., &c.,

BRIDGE STREET,

NELSON.

A LARGE ASSORTMENT OF

WELL ASSORTED GOODS

ALWAYS IN STOCK.

SOLE AGENT IN NEW ZEALAND FOR

Cann's Patent Reliance Fire-Proof Safes.

OWNER AND AGENT OF

VESSELS RUNNING FROM NELSON

TO

MASSACRE BAY, THE BULLER, RIVER
GREY, WAIRAU, &c.

THE LIVERPOOL & LONDON Fire & Life Insurance Company

ESTABLISHED 1836.

EMPOWERED BY ACT OF PARLIAMENT.

The amount of Capital subscribed
exceeds £1,500,000.

The liability of the Proprietors is declared by the Company's
Act of Parliament to be unlimited.

LIFE INSURANCE

In all its branches, at rates of Premium similar to those
charged in the Australian Colonies.

No charge for Policies, however small the amount.

A prompt settlement of all claims, on satisfactory proof of
death, without the delay of referring to England.

Forms of application and prospectuses giving general informa-
tion may be had of the Local Agents,

MESSRS. NATH. EDWARDS & CO.
NELSON.

The Northern Assurance
Company,
(OF LONDON.)

CAPITAL, £1,259,760.
Accumulated Funds, £554,998.—Income, 1860, £250,000.

ESTABLISHED 1836, AND INCORPORATED BY SPECIAL
ACT OF PARLIAMENT.

LIFE ASSURANCES.

The rates charged by this Company in Australia and New Zealand are the same as those in England.

Policies are issued either with or without participation in the Profits of the Company, thus combining all the advantages of a Mutual Association with the security of a Proprietary Company.

Endowments on the Lives of Children effected either with or without returns in case of death.

FIRE ASSURANCES

Effected at the current rates of Premium; and proposals made to the Agents can be completed without any reference or delay whatever.

No charge made for the Policies.

Losses paid at the different Agencies without any deduction.

The Policies of this Company are not only guaranteed by large capital, but also by the unlimited personal responsibility of the shareholders.

Prospectuses and Forms of Proposal may be obtained at the various Agencies.

NELSON:
A. W. SCAIFE, ESQ.
MARLBOROUGH:
JAMES SINCLAIR, ESQ.

IMPERIAL
Fire Insurance Company

1, OLD BROAD STREET,
AND
16, PALL MALL,
LONDON.

INSTITUTED 1803.

For Insuring Houses and other Buildings, Goods, Wares, Merchandize, Manufacturing and Farming Stock, Ships in Port, Harbour, or Dock, and the Cargoes of such Ships; also Ships building and repairing, from loss or damage by Fire.

Subscribed and Invested Capital:—

One Million Six Hundred Thousand
Pounds.

AGENT FOR NELSON—

D. MOORE,
TRAFALGAR STREET.

NELSON COLLEGE.

PRINCIPAL:

J. D. GREENWOOD, ESQ.

ASSISTANT MASTERS:

Mathematics and Modern Languages: Rev. C. L. MACLEAN, B. A., Trinity College, Dublin.

Classical	R. FORSTER, Esq., Harrow.
Junior Division	G. COTTERELL, Esq.
Drawing	C. W. MANBY, Esq.
Music	C. W. MANBY, Esq.
Military Drill	...	:	R. FORSTER, Esq.

INSTRUCTION.

The regular course comprises a threefold division, to each part of which a nearly equal portion of time and attention is given.

1ST DIVISION.—Latin, Greek, and French Languages.

2ND DIVISION.—Arithmetic, Mathematics, Geometry, and the Elements of Natural Science.

3RD DIVISION.—Geography; History, Ancient and Modern; Writing; the English Language, its grammar and literature, and composition.

ADMISSION.

Pupils between the ages of nine and twelve, who can read and write with facility, and can practice the first four rules of Arithmetic, are eligible for the lowest class.

After the age of twelve, their education must be sufficiently advanced to enable them to go into classes with those of their own age.

The fee, for the Upper School, is £2 5s., and, for the Lower, £2 per quarter, paid in advance.

Instruction in Music and Drawing is optional, the fees for which are extra.

BOARD AND RESIDENCE.

The charge for the present is fixed at £50 per annum for each pupil. This includes washing to a specified weekly amount.

It is requisite that application be made to the Secretary, Mr. BRAITHE WAITE, before sending a pupil, in order to ascertain whether there are any vacancies.

VACATIONS.

There are two vacations; one, commencing about a week or ten days before Christmas, of two months; and the other, of three weeks, beginning about the last week in June.

A separate class has been formed for Book-keeping.

There is a separate class for those who require separate instruction in special subjects, preparatory to joining a class.

BISHOP'S SCHOOL, NELSON.

RE-ESTABLISHED, 1860.

Affords a sound Commercial, with the Elements of a
Classical Education.

HEAD MASTER, E. A. LINGARD, ESQ., of St. EDMUND'S
HALL, OXFORD.

ASSISTANT MASTER, R. H. GASKIN, ESQ.

TERMS:

Entrance Fee, or Book Money, 20s. Quarterly Fee
(in advance), 30s.

LIGHTBAND AND JACKSON,

MANUFACTURERS AND IMPORTERS OF

Boots, Shoes, Leather, and Grindery,

NOS. 4 & 5, TRAFALGAR STREET, NELSON.

OTTO WIESENHAVERN,

Wholesale and Retail Tobacconist,

TRAFALGAR STREET, NELSON, N.Z.

1001
NELSON
STEAM COFFEE MILLS.

HENRY HOUNSELL,

(Successor to John Symons & Co.)

General and Furnishing Ironmonger.

FURNITURE,

AND

GROCERY WAREHOUSE,

BRIDGE STREET, NELSON,

A Large Assortment of Colonial and English-made Furniture
always on hand.

Iron Bedsteads of every description.

American Stoves of the most approved kinds.

Mappin's Electro-plate and Cutlery.

A Choice Selection of Moderator and Kerosine Lamps.

The best Colza and unexplosive Kerosine Oil. Cottons,
Chimneys, &c.

Fenders and Fire-irons in endless variety.

China and Glass of every description.

Guns, Rifles, Pistols, Powder, Shot, and Caps.

Carpeting, Felting, China and Cocoa Matting, Door Mats,
Brooms, Brushes, &c.

American Picks and Shovels, and all kinds of Diggers' Tools
constantly on hand.

A Large Stock of American Cut Nails.

Mathieson's and Sorby's Carpenters' Tools, &c., &c.

**Builders and the Trade Supplied
on the most Liberal Terms.**