

SAWYERS' ARMS HOTEL.

MONSTER CLOTHING HALL,  
HIGH STREET, CHRISTCHURCH.

HENRY MOSS,  
PROPRIETOR.

READY-MADE CLOTHING,  
TAILORING AND OUTFITTING TRADE  
IN ALL ITS BRANCHES.

H. M., in soliciting a continuance of the patronage of his Friends, begs to intimate that he has imported a large and splendid Stock of READY-MADE CLOTHING, in all the Newest Styles and of the latest Fashions. Also, a superior assortment of WOOLLENS, which will be found in his Bespoke Department.

H. M. has engaged Cutters of ability and experience, and can guarantee a good fit, coupled with moderate charges.

STATION OWNERS  
Can be supplied with every article required on liberal terms.

N.B.—A large Stock of Hats, Caps, Hosiery, Neck Ties, &c., &c.

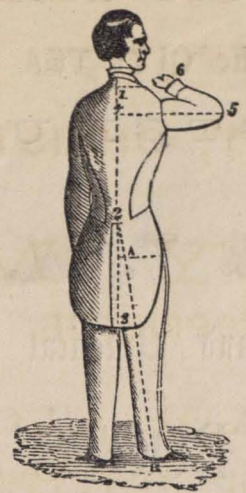
Mechanics' and Working Men's Clothing of the very best description, at the lowest possible prices. Every article is marked in plain figures, from which no deviation will be made. Any article purchased and not approved of will be exchanged, or the money returned without the slightest hesitation.

*This Establishment is closed on Saturdays until 5 o'clock, when business will be resumed until 11 p.m.*

HENRY MOSS, Proprietor.

MONSTER CLOTHING HALL,  
HIGH STREET, CHRISTCHURCH.

SELF-MEASUREMENT.



- Directions for Coats. Inches.
- From 1 at Neck to 2 at Waist ...
  - 2 to 3 for length of Coat ...
  - Centre of Back at 4 to Elbow at 5 ...
  - Continuing on to 6 for length of Arm ...
  - Round the Muscle of Arm above the Elbow ...
  - Round the same below the Elbow ...
  - Round the Wrist at 6 ...
  - Round the Chest under the Coat at 7 ...
  - Round the Waist under the Coat ...

- Vests.
- From 1 at back of neck to the length required in front ...
  - Round the Chest ...
  - Round the Waist ...

- Trousers.
- From the top of the Trousers to the length required at B. ...
  - From A between the legs to B ...
  - Round the Waist under the Waistcoat ...
  - Round the Hips ...
  - Round the Leg at A ...
  - Round the Knee ...
  - Round the Foot at B ...

Measure for Hat.  
The number of inches round the Head

To insure a correct fit, it is necessary to give the measure with exactness, and state whether the party is upright or inclined to stoop. The height is also a good guide.

HENRY MOSS, PROPRIETOR.

N.B.—Gentlemen residing up Country, and sending for Clothing (to guarantee a good fit), will please send measure as above.