

ILLUSTRATED CATALOGUE
OF THE
ROBERT McDOUGALL
ART GALLERY

CHRISTCHURCH
NEW ZEALAND

REGULATIONS.

THE ROBERT MCDUGALL ART GALLERY is open to the public free of charge, subject to the following conditions :—

The Gallery is open between the hours of 10 a.m. and 4 p.m. from Tuesdays to Saturdays, and from 2 p.m. to 4 p.m. on Sundays. The Gallery is closed on Mondays, Good Friday, Anzac Day and Christmas Day, with the exception that when a recognised public holiday falls on a Monday, the Gallery is kept open on that day and closed on the following day.

Copying of pictures is not permitted.

Photographing of pictures prohibited.

Cameras are not to be taken into the Gallery except by special permission of the Town Clerk.

Smoking is prohibited.

Children under 12 years are not admitted unless accompanied by a parent, guardian or teacher.

Walking sticks and umbrellas must be left with the custodian.

The public are specially requested not to touch either the pictures or the frames.

ILLUSTRATED CATALOGUE
OF
THE ROBERT McDOUGALL
ART GALLERY

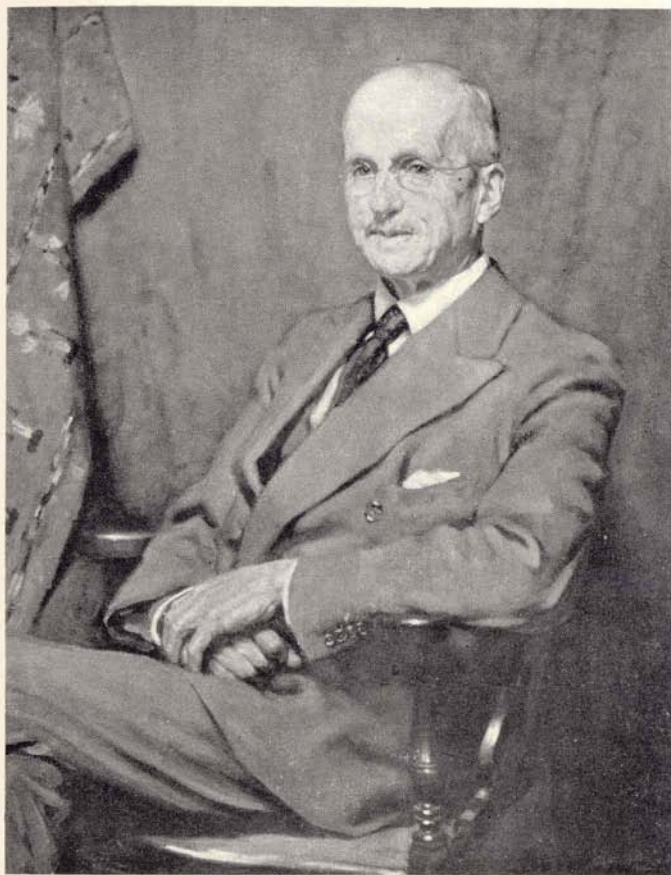
CHRISTCHURCH · NEW ZEALAND



REPRODUCTIONS BY JAMES THOMSON

WHITCOMBE & TOMBS LIMITED

AUCKLAND · CHRISTCHURCH · DUNEDIN · WELLINGTON
MELBOURNE · SYDNEY · LONDON



PORTRAIT OF ROBERT E. McDOUGALL

No. 103

By Archibald F. Nicoll

Presented by R. E. McDougall, Esq.

ROBERT EWING McDougall was born in Melbourne, of Scotch parentage—came to Christchurch as a child—was educated at Mr. Charles Cook's School and at Christ's College.

At the age of 14 he entered a Bank, and seven years later became junior partner in the firm of Aulsebrook & Co. After ten years as junior partner he bought Mr. Aulsebrook's interest in the Company, and as sole proprietor and manager he has made his Company one of the most prosperous commercial undertakings in New Zealand.

Mr. McDougall has always been interested in Art, buying pictures from time to time with good taste and discrimination. He has always looked forward to the time when he should be able to present to the City of Christchurch a gallery worthy of the collection of pictures which had been assembled by the Canterbury Society of Arts. In 1928 he lodged with the City Council the sum of £25,000 which has been generously supplemented since the building was begun.

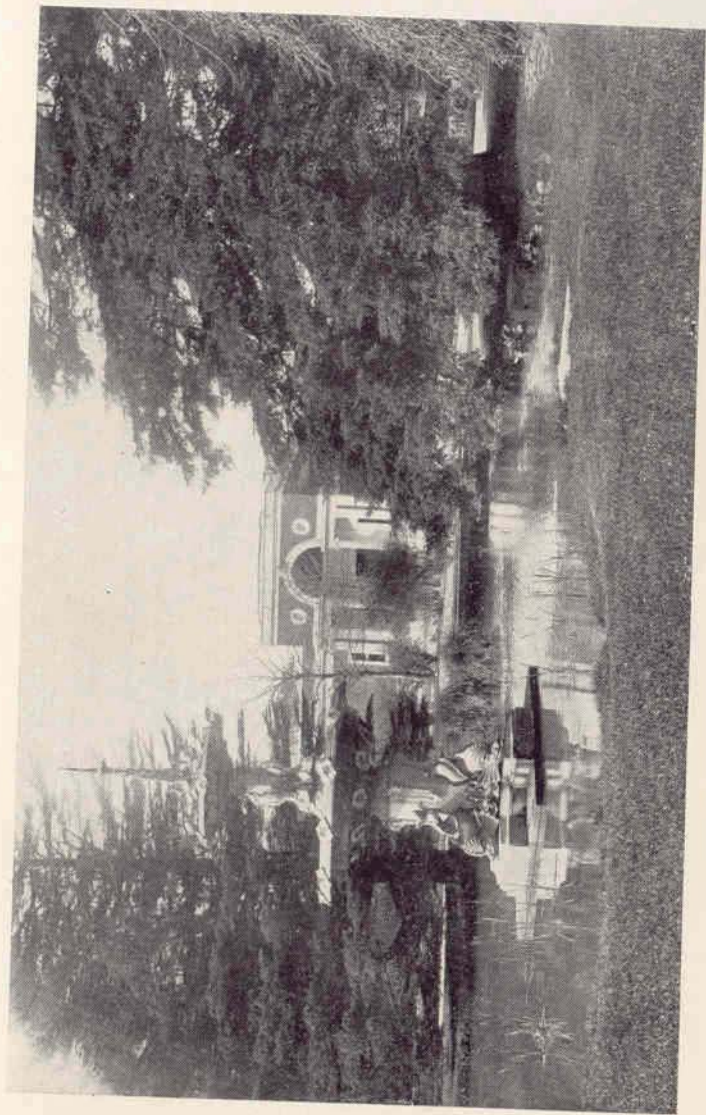
The Robert McDougall Gallery was built on a site granted to the City by the Domains Board. The foundation stone was laid on May 28th, 1928, by Mr. McDougall. The Gallery

was formally opened on June 16th, 1932, by Mr. D. G. Sullivan, Mayor of Christchurch.

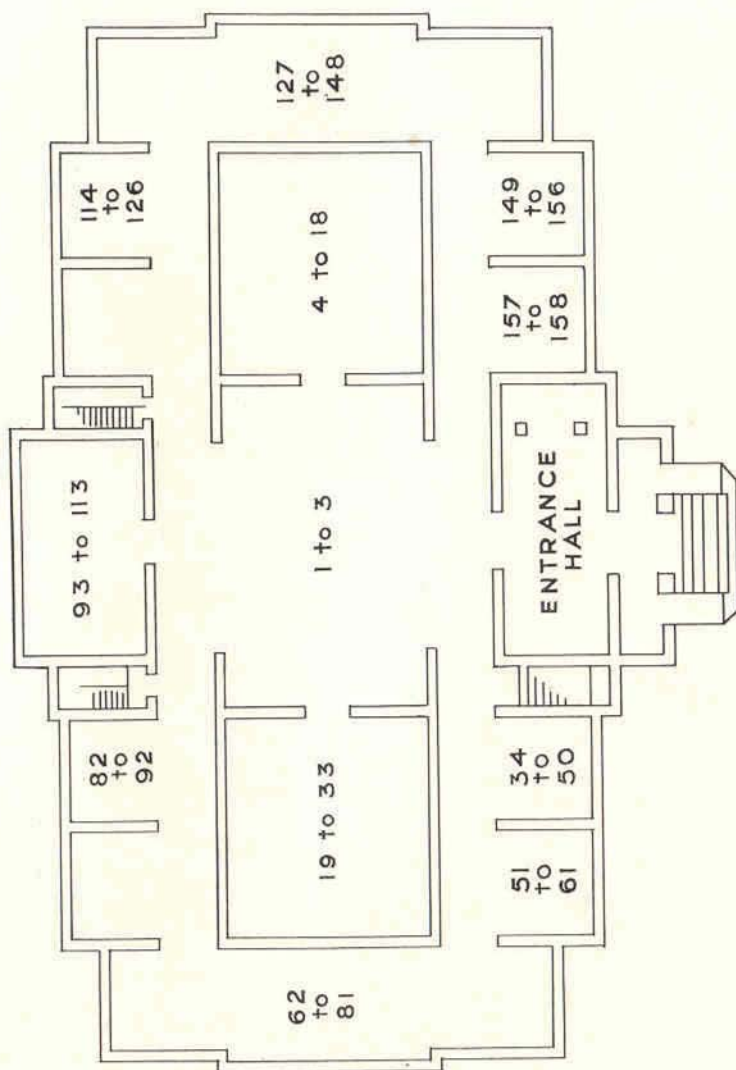
The building and its site are vested in the Christchurch City Council.

The Canterbury Society of Arts handed over its valuable collection of pictures to the Gallery on the day of opening. To these were added sundry pictures presented by individual donors, together with a selection from the collection of the late James Jamieson, presented by members of his family.





ONE OF THE APPROACHES TO THE McDOUGALL ART GALLERY



ROBERT McDOUGALL ART GALLERY

SCULPTURE

(Entrance lobby)

BRONZE PORTRAIT OF R. E. McDOUGALL

FRANCIS A. SHURROCK, A.R.C.A. (London)

Francis A. Shurrock was born and educated in England; came to New Zealand in 1924.

Presented by the Canterbury Society of Arts.

I. THE LASS OF DEE

C. L. HARTWELL, R.A.

C. L. Hartwell has had work purchased by the Chantrey Bequest.

Presented by the Canterbury Society of Arts.



No. 1

2. DAUGHTER OF EVE

C. KIDSON

C. Kidson was born in England ; studied in Birmingham.

Presented by the Canterbury Society of Arts.

3. THE AGE OF INNOCENCE

ALFRED DRURY, R.A.

Alfred Drury was educated in England; work purchased by the Chantrey Bequest.

Presented by the Canterbury Society of Arts.



No. 4

4. TIMBER COMING DOWN THE MOUNTAIN**LUCY KEMP-WELCH, R.O.I., R.I.**

Lucy Kemp-Welch studied at the Herkomer School. Exhibited at the Academy and Salon; work purchased by the Chantrey Bequest.

Presented by "A wellwisher."

5. A CAIRO GATEWAY**RICHARD WALLWORK, A.R.C.A. (Ptg. London)**

Richard Wallwork was educated in England; came to New Zealand in 1911. Exhibited in Academy and Salon.

Presented by the Canterbury Society of Arts.

6. A FLEMISH WATERWAY**ARCHIBALD F. NICOLL**

Archibald F. Nicoll was born in New Zealand. Studied at the Christchurch School of Art, in London, and in Edinburgh. Exhibited in the Academy.

Presented by the Canterbury Society of Arts.

7. AMONG THE SANDHILLS**ADRIAN STOKES, R.A.**

Adrian Stokes studied at the Royal Academy Schools.

Presented by the Canterbury Society of Arts.



No. 5



No. 8

8. CLEARING AFTER RAIN

NUGENT WELCH

Nugent Welch was born in New Zealand. New Zealand
Official War Artist in the Great War. Studied in Wellington.

Presented by the Canterbury Society of Arts.

9. G. HARPER, ESQ.

ARCHIBALD F. NICOLL

(See No. 6)

Presented by the Citizens of Christchurch

10. WINTER IN THE HIGHLANDS**GEORGE HOUSTON, R.S.A., R.S.W.**

Presented by the Canterbury Society of Arts.

11. PSYCHE**SOLOMON J. SOLOMON, R.A.**

Presented by the Canterbury Society of Arts.

12. THE UPLANDS**ARNESBY BROWN, R.A.**

Arnesby Brown, work purchased by the Chantrey Bequest.

Presented by the Canterbury Society of Arts.

13. YOUTH**ELIZABETH KELLY**

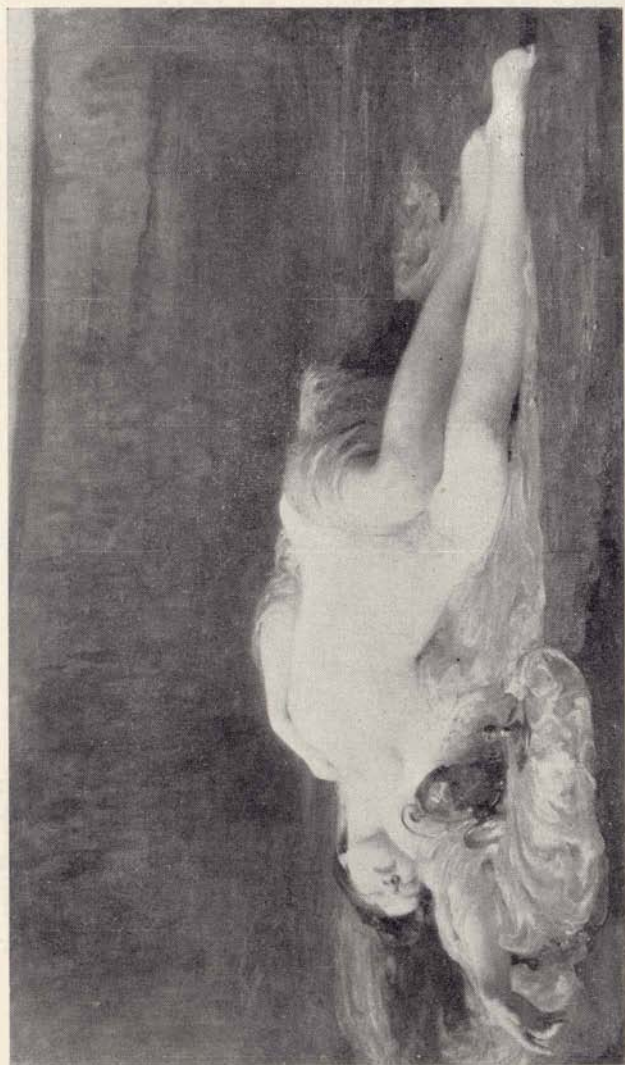
Elizabeth Kelly was born in New Zealand. Studied at Canterbury School of Art and in England. Exhibited in Academy and Salon (Honourable mention 1932.)

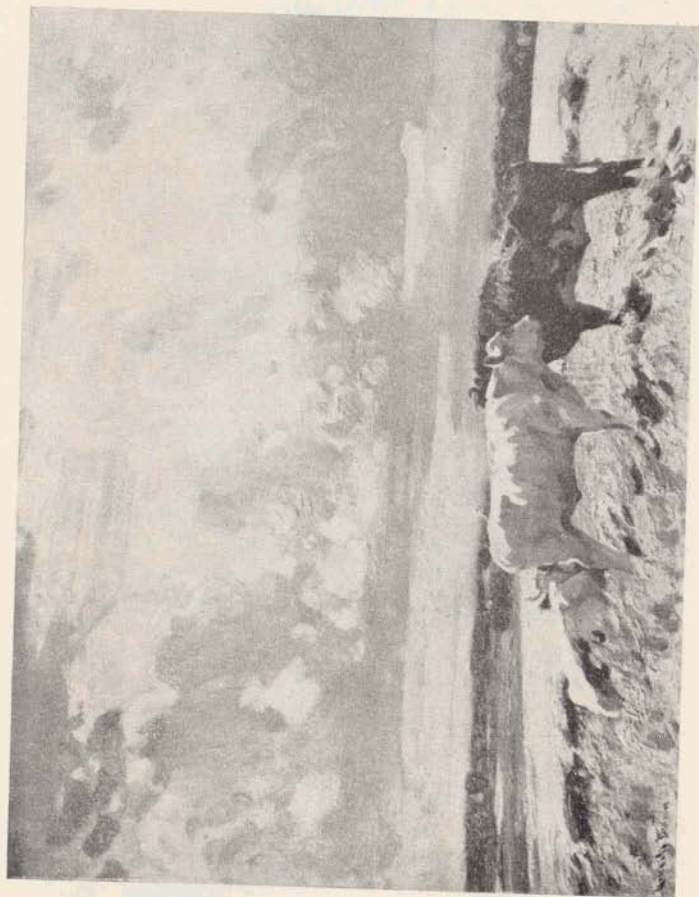
Presented by the Canterbury Society of Arts.

14. HORSES ON THE QUAY**SYDNEY L. THOMPSON**

Sydney L. Thompson was born in New Zealand. Studied Canterbury School of Art and in Paris. Exhibited in Academy and Salon (Honourable Mention).

Presented by the Canterbury Society of Arts.





No. 12

15. FISHING VILLAGE

TERRICK WILLIAMS, A.R.A., R.I., R.A.

Presented by the Canterbury Society of Arts.

16. IN SUNNY ITALY

ROBERT PROCTER

Robert Procter studied at Canterbury School of Art, Paris and Italy.

Presented by the Canterbury Society of Arts.

17. REVERIE

G. W. JOY

Presented by the Canterbury Society of Arts.

18. ST. PAUL'S CATHEDRAL

CECIL F. KELLY

Cecil F. Kelly was born in New Zealand. Studied at Canterbury School of Art.

Presented by the Canterbury Society of Arts.

19. THE BLACK HAT

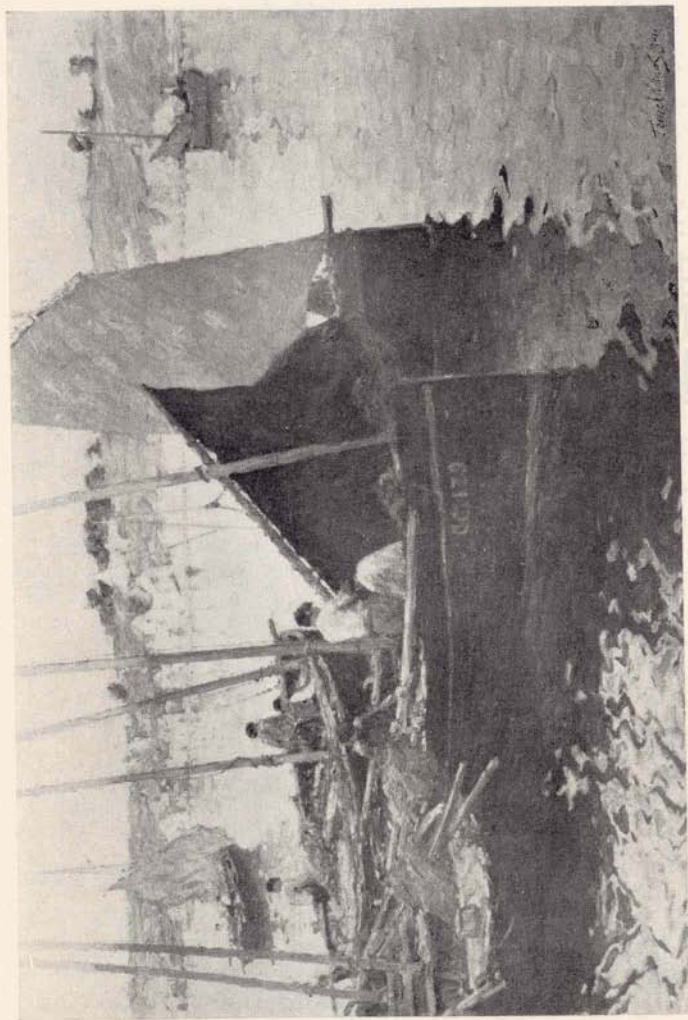
GEORGE HENRY, R.A.

George Henry studied in Glasgow. Member of the Glasgow Group.

Presented by the Canterbury Society of Arts.



No. 13



No. 15

20. THE DOME—SOUTHERN ALPS

CECIL F. KELLY

(See No. 18)

Presented by the Canterbury Society of Arts.

21. MARE AND FOAL

LUCY KEMP-WELCH, R.O.I. R.I.

(See No. 4)

Presented by the Canterbury Society of Arts.

22. MAKING LIGURIAN LACE

HENRY LA THANGUE, R.A.

Henry La Thangue studied at Royal Academy Schools and Paris. Exhibited in Royal Academy and Salon.

Work purchased by the Chantrey Bequest.

Presented by the Canterbury Society of Arts.

23. A SUNNY AFTERNOON

BERTRAM PRIESTMAN, R.A.

Presented by the Canterbury Society of Arts.

24. THE DROVER

RICHARD WALLWORK, A.R.C.A. (Ptg. London)

(See No. 5)

Presented by George Humphreys, Esq.

30 *Robert McDougall Art Gallery*

25. NASTURTIUMS

IDA CAREY

Ida Carey was born in New Zealand; studied in Auckland and Sydney.

Presented by George Humphreys, Esq.

26. GLEN DOCHART

NIELS M. LUND

Presented by the Canterbury Society of Arts.

27. THE BLUE JACKET

WALTER WEBSTER, R.O.I., R.I.

Presented by the Society for Imperial Culture.

28. A DIFFERENCE

C. M. PADDAY, R.I.

Presented by the Canterbury Society of Arts.

29. THE FOG HORN

HELY SMITH, R.B.A.

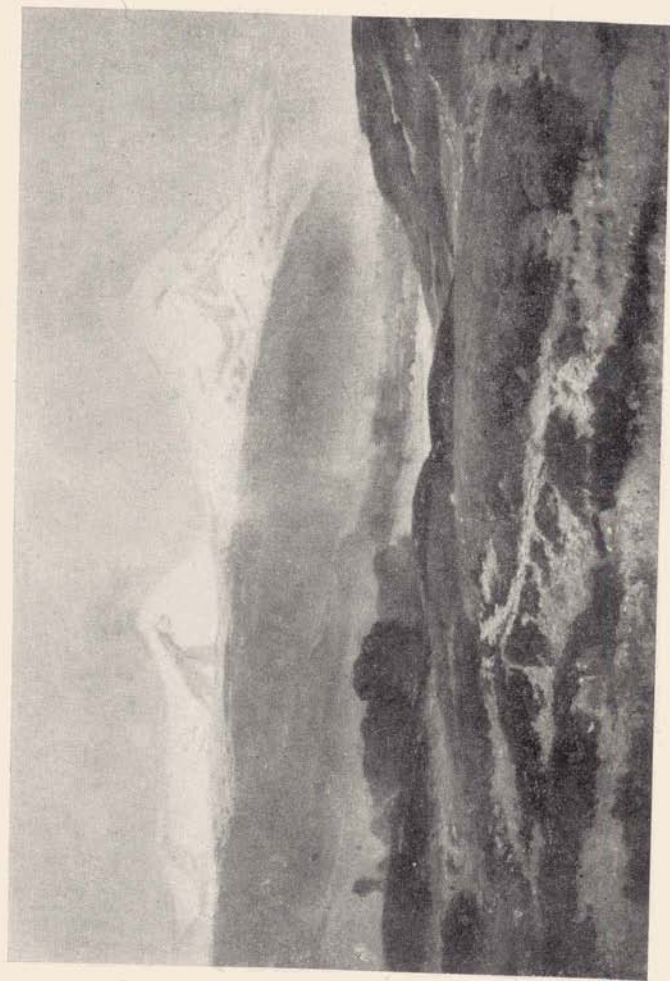
Presented by the Canterbury Society of Arts.



No. 18



No. 22



No. 26

30. THE WIZARD'S GARDEN

G. D. LESLIE, R.A.

Work purchased by the Chantrey Bequest.

Presented by the Canterbury Society of Arts.

31. LINGERING LEAVES

C. H. EASTLAKE

Presented by the Canterbury Society of Arts.

32. A SCOTCH HILLSIDE

W. MENZIES GIBB

W. Menzies Gibb was born in New Zealand. Studied at Canterbury School of Art and in Melbourne.

Presented by the Canterbury Society of Arts.

33. WE'VE BEEN IN THE MEADOWS ALL DAY

W. LEE HANKEY, A.R.W.S., R.O.I.

Presented by the Canterbury Society of Arts.

34. TWIN LAMBS

T. SIDNEY COOPER, R.A.

Presented by the family of the late James Jamieson.

35. THE FOUNTAIN

W. A. BREAKSPEARE

Presented by the family of the late James Jamieson.

36. SEA STUDY**HENRY MOORE, R.A.**

Work purchased by the Chantrey Bequest.

Presented by the family of the late James Jamieson.

37. A READING FROM PLATO**G. DEMAIN HAMMOND, R.I.**

Presented by the family of the late James Jamieson.

38. THE ROMANCE**ROBERT ANNING BELL, R.A.**

Work purchased by the Chantrey Bequest.

Presented by the family of the late James Jamieson.

39. THE SLOPING DECK**W. L. WYLLIE, R.A.**

Work purchased by the Chantrey Bequest.

Presented by the family of the late James Jamieson.

40. LANDSCAPE**GERADE MESERBY**

Presented by the family of the late James Jamieson.

41. THE SEWING PARTY**TERRICK WILLIAMS, A.R.A., R.I., R.A.**

(See No. 15)

Presented by the family of the late James Jamieson.



No. 27



No. 33



No. 43

42. THE HARBOUR

COLIN HUNTER, A.R.A.

Presented by the family of the late James Jamieson.

43. JAMES JAMIESON

ELIZABETH WALLWORK

Elizabeth Wallwork studied in England; came to New Zealand in 1911. Exhibited in Salon.

Presented by the family of the late James Jamieson.

44. PARSONAGE FARM

YEEND KING, R.I.

Work purchased by the Chantrey Bequest.

Presented by the family of the late James Jamieson.

45. HOEING THE CROP

JAMES M. NAIRN

Studied in Glasgow. Member of the Glasgow Group; came to New Zealand 1890.

Presented by the Canterbury Society of Arts.

46. CHALK CLIFFS

C. H. EASTLAKE

(See No. 31)

Presented by the family of the late James Jamieson.

47. LOW TIDE

ALFRED W. WALSH

Alfred W. Walsh was born at Kyneton, Victoria. Studied in Dunedin and at Canterbury School of Art.

Presented by the family of the late James Jamieson.



No. 48

48. ENA PAPATAI**C. F. GOLDIE**

C. F. Goldie was born in Auckland. Studied in Paris at Julien's.

Presented by the family of the late James Jamieson.

49. SHOWERY WEATHER**HANS HEYSEN**

Hans Heysen was born at Hamburg. Studied at Adelaide, South Australia and in Italy.

Presented by the family of the late James Jamieson.

50. ST. IVES

OWEN MERTON, R.B.A

Owen Merton was born in Christchurch, New Zealand. Studied at Canterbury School of Art and with Charles van Havermaert.

Presented by the family of the late James Jamieson.

51. CORN FIELD

EUGENE J. BOUDIN

Presented by the family of the late James Jamieson.

52. THE CLOCK TOWER, ROUEN

THOMAS CANE

Thomas Cane trained as an architect under Gilbert Scott; came to New Zealand in 1873.

Presented by the family of the late James Jamieson.

53. MAJORCA—AFTER MASS

C. N. WORSLEY, R.B.A.

C. N. Worsley was born in England. Studied in England. Exhibited at the Royal Academy.

Presented by the family of the late James Jamieson.

54. INTERIOR

PETRUS VAN DER VELDEN

Petrus Van der Velden was born in Holland; came to New Zealand in 1872. Pictures in the National Museum, Amsterdam and the Hague Art Gallery.

Presented by the family of the late James Jamieson.

55. SPRING IN THE HIGHLANDS**GEORGE HOUSTON, R.S.A., R.S.W.**

(See No. 10)

Presented by the family of the late James Jamieson.

56. THE MARKET**ROBERT PROCTER**

(See No. 16)

Presented by the family of the late James Jamieson.

57. DUTCH FUNERAL BARGE**PETRUS VAN DER VELDEN**

(See No. 54)

Presented by the family of the late James Jamieson.

58. AN EASTERN BARBER**F. BRANGWYN, R.A.**

F. Brangwyn was born in Belgium. Self educated. Designed for William Morris and Co.

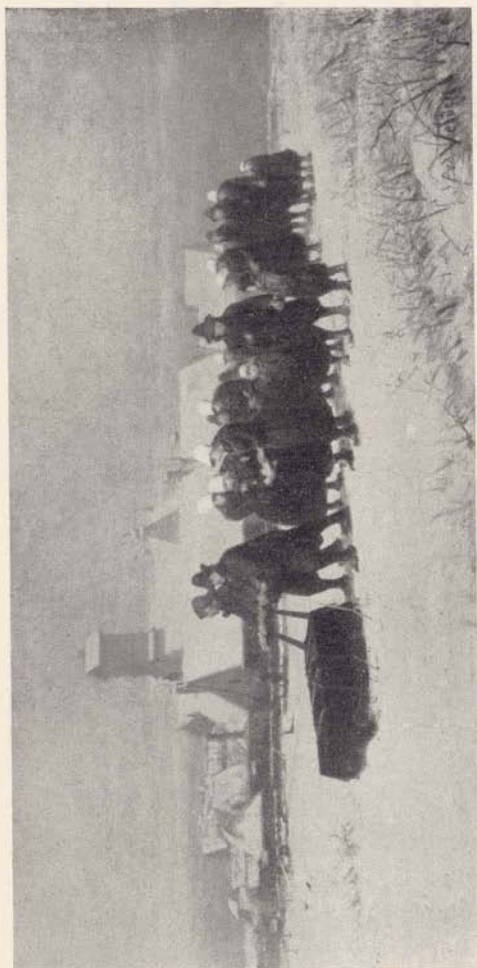
Presented by the family of the late James Jamieson.

59. ON THE BEACH**CHARLES SIMPSON, R.I.**

Presented by the family of the late James Jamieson

60. CALM MORNING ON THE CLYDE**PATRICK DOWNIE, R.S.W.**

Presented by the family of the late James Jamieson.



No. 63

61. AFTER THE DANCE

F. PRUDILLA

Presented by the family of the late James Jamieson.

62. FISHERMAN'S HEAD

PETRUS VAN DER VELDEN

(See No. 54)

From the collection of the late Stephen Powell.

Presented by Canterbury College.

63. THE DUTCH FUNERAL

PETRUS VAN DER VELDEN

(See No. 54)

Presented by H. C. D. Van Asch, Esq.

64. MOUNT EARNSLAW

J. F. SCOTT

Presented by the Canterbury Society of Arts.

65. LE LECTURE DE LA BIBLE

HENRIETTE BROWNE

Presented by R. E. McDougall, Esq.

66. WELCOME MORSEL

L. C. NIGHTINGALE

Presented by the Canterbury Society of Arts.

67. ON THE ROAD TO PEEL FOREST**W. MENZIES GIBB**

(See No. 32)

Presented by the Canterbury Society of Arts.

68. THE KEY TO NORMANDY**A. HAYWARD**

Presented by the Canterbury Society of Arts.

69. A CANTERBURY PASTORAL**W. MENZIES GIBB**

(See No. 32)

Presented by the Canterbury Society of Arts.

70. PEACOCKS**Mrs. M. E. R. TRIPE**

Mrs. M. E. R. Tripe was born in Christchurch, New Zealand.
Studied under Nairn, and in England under Whiting.

Presented by J. J. Thomson, Esq.

71. MOONLIGHT**JULIUS OLSSON, R.A.**

Julius Olsson, work purchased by the Chantrey Bequest.

Presented by the Canterbury Society of Arts.

72. HILL LEOPARDS

ARTHUR WARDLE

Arthur Wardle, work purchased by the Chantrey Bequest.

Presented by the Canterbury Society of Arts.

73. ON THE TEIGN, NORTH DEVON

E. GOULDSMITH, R.B.A., R.W.A.

Presented by the Canterbury Society of Arts.

74. GLASGERION

G. SHERIDAN KNOWLES

G. Sheridan Knowles studied in Manchester and at Royal Academy Schools, London.

Presented by the Canterbury Society of Arts.

75. THE LIFE CLASS

G. K. WEBBER

G. K. Webber was born in New Zealand. Studied at Auckland, Christchurch and London. Killed in the Great War.

Presented by the Canterbury Society of Arts.

76. CYNTHIA'S BIRTHDAY

H. LINLEY RICHARDSON, R.B.A.

Presented by the Canterbury Society of Arts.

77. SUMMER**NUGENT WELCH**

(See No. 8)

Presented by the Canterbury Society of Arts.

78. THE TYRANT**Mrs. SEYMOUR LUCAS**

Presented by the Canterbury Society of Arts.

79. MAY DAY**FRED ROE, R.I., R.B.A.**

Presented by the Canterbury Society of Arts.

80. TERESINA**LORD LEIGHTON, P.R.A.**

Presented by the Canterbury Society of Arts.

81. EVENING GLOW**GRACE BUTLER**

Grace Butler was born in New Zealand. Studied at Napier Art School and Canterbury School of Art.

Presented by the Canterbury Society of Arts.

82. MONA VALE**CEDRIC SAVAGE**

Cedric Savage was born in New Zealand. Studied at Canterbury School of Art and in Sydney.

Presented by the Canterbury Society of Arts.

83. SIR R. HEATON RHODES, K.C.V.O., K.B.E., M.L.C.

W. A. BOWRING, R.I., R.O.I.

W. A. Bowring was born in Auckland, New Zealand.

Presented by the Canterbury Society of Arts.

84. A SLAVE

St. GEORGE HARE, R.I., R.O.I.

Presented by the Canterbury Society of Arts.

85. TUDDINGTON

Sir DAVID MURRAY, R.A., R.W.S., P.R.I.

Presented by the Canterbury Society of Arts.

86. A BLUE ROOM IN KENSINGTON

J. DURDEN, R.O.I.

Presented by Citizens of Christchurch.

87. MAORI MOTHER AND CHILD

SYDNEY L. THOMPSON

(See No. 14)

Presented by R. E. McDougall, Esq.

88. A SUMMER IDYLL

JAMES M. NAIRN

(See No. 45)

Presented by the Canterbury Society of Arts.

89. DOCK STUDY WITH BOATS (Pastel)

C. FROMUTH

Presented by the Canterbury Society of Arts.

90. AUTUMN**W. E. CHAPMAN**

W. E. Chapman was born in New Zealand. Studied at Canterbury School of Art and in Paris. Exhibited in Salon. Settled in New York.

Presented by the Canterbury Society of Arts.

91. A HOT DAY**C. F. GOLDIE**

(See No. 48)

Presented by the Canterbury Society of Arts.

92. SUNNY HOURS**ROBERT PROCTER**

(See No. 16)

Presented by the Canterbury Society of Arts.

93. LAKE WAKATIPU**W. M. HODGKINS**

W. M. Hodgkins studied in Dunedin, New Zealand.

Presented by the Canterbury Society of Arts.

94. BERNE**C. N. WORSLEY, R.B.A.**

(See No. 53)

Presented by the Canterbury Society of Arts.

95. THE MARBLE SHRINE**RICHARD WALLWORK, A.R.C.A. (Ptg. London)**

(See No. 5)

Presented by the Canterbury Society of Arts.



No. 96

96. MOUNT SEFTON

Miss D. K. RICHMOND

Miss D. K. Richmond was born in Auckland, New Zealand. Studied at the Slade School under Le Gros, and under Norman Garstin.

Presented by the Canterbury Society of Arts.

97. IN SHELTER

R. W. ALLEN, R.W.S., R.S.W.

Presented by the Canterbury Society of Arts.



No. 97

98. ROSES**Miss M. O. STODDART**

Miss M. O. Stoddart was born in New Zealand. Studied at Christchurch, and with Chas. Lasar. Exhibited in Royal Academy, Salon, and Royal Institute of Water Colours.

Presented by the Canterbury Society of Arts.

99. A CASE OF MINIATURES

- (1) Ode on Indolence. FLORENCE KINGSFORD.
- (2) Joan. GWEN HUGHES
- (3) Reverie. L. HEATH, R.M.S.
- (4) Darby. GWEN HUGHES.
- (5) Kitty. ELIZABETH WALLWORK.
- (6) Damaris. D. DARNELL.

100. HORSE AND CART

MAUD SHERWOOD

Maud Sherwood was born in Dunedin. Studied in Wellington and Paris. Exhibited at Royal Academy and Salon.

Presented by the Canterbury Society of Arts.

101. "ON THE MOOR"—KYLES OF BUTE

W. EYRE WALKER, R.W.S.

Presented by the Canterbury Society of Arts.

102. JASON PLOUGHING THE ACRE OF MARS

(Bronze)

GILBERT BAYES, F.R.B.S.

Presented by the Canterbury Society of Arts.

103. R. E. McDOUGALL, ESQ.

ARCHIBALD F. NICOLL

(See No. 6)

Presented by Mr. McDougall

104. HOUSES OF PARLIAMENT, WESTMINSTER

W. MATTHEW HALE, R.W.S.

Presented by the Canterbury Society of Arts.

105. IN THE OTIRA**ALFRED W. WALSH**

(See No. 47)

Presented by the Canterbury Society of Arts.

106. CASE OF MINIATURES(1) *Reverie.* A. MUSSPRATT.(2) *In the Garden.* M. B. WORSFOLD, R.M.S.(3) *Daughter of Charles I (after Vandyke).*

VERE TEMPLE.

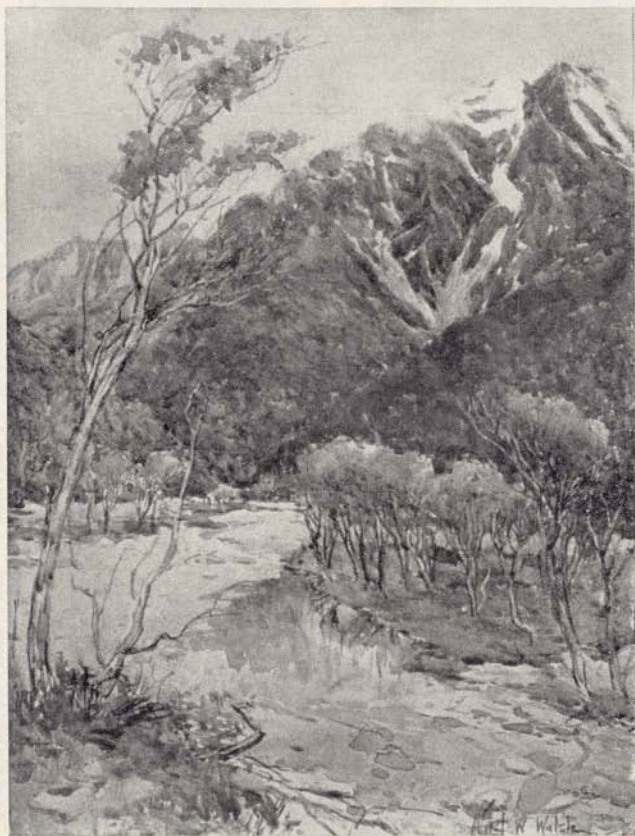
(4) *Innocence.* E. COTTON HAIG, R.M.S.(5) *Summer Days.* M. LEE HANKEY, R.M.S.**107. MOUNT ELLIOT AND JERVOIS GLACIER****A. E. BAXTER**

A. E. Baxter was born in New Zealand; studied at Canterbury School of Art. Exhibited in Academy and Salon.

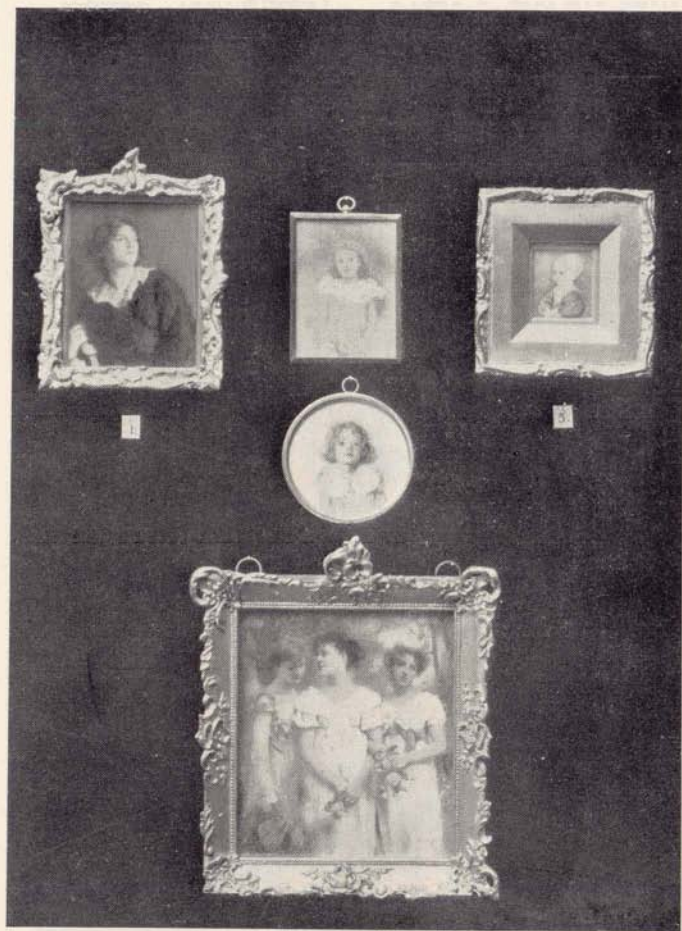
Presented by the Canterbury Society of Arts.

108. CONSPIRATORS**E. BUNDY, R.I., R.O.I.**

Presented by the Canterbury Society of Arts.



No. 105



No. 106



No. 109

109. AKAROA HARBOUR

Miss M. O. STODDART

(See No. 98)

110. AUTUMN

HAROLD SPEED, R.P.

Harold Speed, R.P., has had work purchased by the Chantrey Bequest.

Presented by the Canterbury Society of Arts.

111. GREYMOUTH HARBOUR**ALFRED W. WALSH**

(See No. 47)

Presented by the Canterbury Society of Arts.

112. LAKE TE WHARAU**JOHN GULLY**

John Gully came to New Zealand in the early days.

Presented by the Canterbury Society of Arts.

113. A DORSET COTTAGE**Mrs. H. ALLINGHAM, R.W.S.**

Presented by the Canterbury Society of Arts.

114. VAISON LA ROMAINE**JAMES COOK**

James Cook was born in Christchurch. Studied at Canterbury School of Art and in Edinburgh.

Presented by the Canterbury Society of Arts.

115. MARSEILLES**OWEN MERTON, R.B.A.**

(See No. 50)

Presented by Miss M. L. Grigg.



No. 116

116. AVIGNON FROM THE PALACE GARDEN

JAMES COOK

(See No. 114)

Presented by the Canterbury Society of Arts.

117. THE FAERY QUEEN—MT. SPENCER RANGE

G. H. ELIOTT

G. H. Elliott studied at School of Art, Bradford, and the Royal College of Arts, London; came to New Zealand in 1881. Exhibited Royal Institute of Water Colours.

Presented by the Canterbury Society of Arts.

118. THE TAKAKA VALLEY**JAMES CROWE RICHMOND, M.L.C.**

James Crowe Richmond came to New Zealand in 1851.
Exhibited at Royal Academy.

Presented by the Canterbury Society of Arts.

119. GLEN FINLIS, PERTHSHIRE**DAVID LAW, R.B.A.**

Presented by the Canterbury Society of Arts.

120. POOL AMONG THE HILLS**Sir E. A. WATERLOW, R.A., P.R., W.S.**

Sir E. A. Waterlow, R.A., P.R., W.S., has had work purchased by the Chantrey Bequest.

Presented by the Canterbury Society of Arts.

121. ON THE OUSE**CLAUDE HAYES, R.I.**

Presented by the Canterbury Society of Arts.

122. OLD DUTCH GALLIOT**Miss JENNY WIMPERIS**

Miss Jenny Wimperis was born in England. Studied at Munich and Antwerp.

Presented by the Canterbury Society of Arts.

123. A FARM SCENE

E. WAYMOUTH

(See Mrs. Hughes, No. 126)

Presented by the Canterbury Society of Arts.

124. LA PICCOLA MARINA CAPRI

OLIVIA SPENCER-BOWER

Olivia Spencer-Bower came to New Zealand in 1920. Studied at Canterbury School of Art, the Slade School, and Grosvenor School of Modern Art.

Presented by the Canterbury Society of Arts.

125. THE SWING

NORMAN LINDSAY

Norman Lindsay was born and studied in Australia.

Presented by G. Sevicke Jones, Esq.

126. CLIFFS NEAR LAND'S END

ELEANOR HUGHES, R.I.W.

Eleanor Hughes (E. Waymouth), was born in New Zealand. Studied at Canterbury School of Art and with Stanhope Forbes and Splenlove. Exhibited at Royal Academy and Royal Institute of Water Colours.

Presented by the Canterbury Society of Arts.

127. THE SUNLIT HILL

K. M. BALLANTYNE

K. M. Ballantyne was born in New Zealand. Studied in Wellington.

Presented by the Canterbury Society of Arts.



No. 128

128. EVENING GLOW**SYDNEY L. THOMPSON**

(See No. 14)

Presented by the Canterbury Society of Arts.

129. DOUBTS**HENRIETTA RAE (Mrs. Normand)**

Presented by the Canterbury Society of Arts.

130. THE RIVER MACHNE, SOUTH WALES**S. J. LAMORNA BIRCH, A.R.A., R.W.S.**

S. J. Lamorna Birch has had work purchased by the Chantry Bequest.

Presented by the Canterbury Society of Arts.

131. TRAILING MIST

J. LAWSON BALFOUR

J. Lawson Balfour was born in Melbourne. Studied under Herkomer and at Julien's. Exhibited in the Royal Academy.

Presented by the Canterbury Society of Arts.

132. SONG OF THE SHIRT

C. H. EASTLAKE

Presented by the Canterbury Society of Arts.

133. LANDING HERRINGS

CHARLES SIMPSON, R.I.

(See No. 59)

Presented by the Canterbury Society of Arts.

134. FORTUNE

ELIZABETH WALLWORK

(See No. 43)

Presented by the Canterbury Society of Arts.

135. MOUNT SEFTON

C. N. WORSLEY

(See No. 53)

Presented by the Canterbury Society of Arts.

136. THE SISTERS

W. E. CHAPMAN

(See No. 90)

Presented by the Canterbury Society of Arts.

137. A VALLEY BY THE SEA**W. MENZIES GIBB**

(See No. 32)

Presented by the Canterbury Society of Arts.

138. CONSENT**T. C. GOTCH, R.I.**

Presented by the Canterbury Society of Arts.

139. THE KEEPER'S COTTAGE**NIELS M. LUND**

Presented by the Canterbury Society of Arts.

140. A MAORI CHIEFTAIN**C. F. GOLDIE**

(See No. 48)

Presented by the Canterbury Society of Arts.

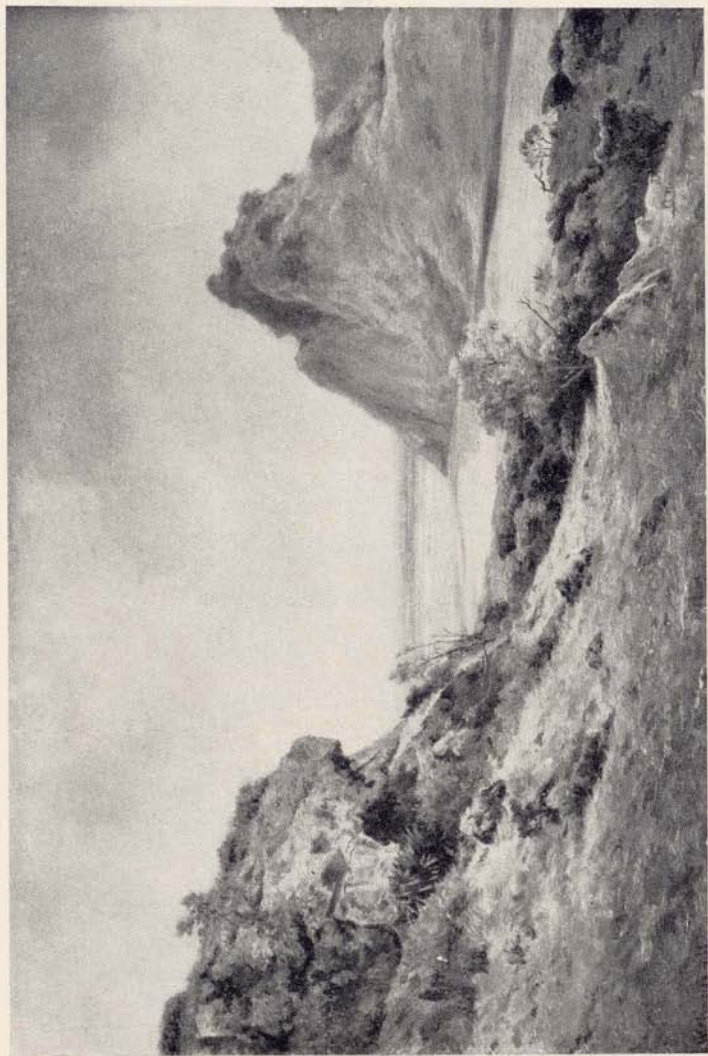
141. LEDA AND THE SWAN**A. JOURDAN**

Presented by Canterbury College.

142. STUDY**A. H. O'KEEFFE**

A. H. O'Keeffe was born at Bendigo. Studied in Dunedin and Paris.

Presented by the Canterbury Society of Arts.



No. 137

143. POOL NEAR ADELAIDE

E. GOULDSMITH, R.B.A.

Presented by the Canterbury Society of Arts.

144. SUNSET ON PORT HILLS

W. K. SPROTT

W. K. Sprott was born in Dunedin. Studied at the Canterbury School of Art.

Presented by the Canterbury Society of Arts.

145. EARLY MORNING, JACKSONS

H. HORRIDGE

H. Horridge studied in England and at Canterbury School of Art.

Presented by the Canterbury Society of Arts.

146. THE SUN-BATHED CLAY PIT

J. WEEKS

J. Weeks was born in New Zealand. Studied at Canterbury School of Art, Auckland, Christchurch and Edinburgh.

Presented by the Canterbury Society of Arts.



No. 147

147. THE SEA AND THE BAY**RHONA HASZARD**

Rhona Haszard was born in New Zealand. Studied at the Canterbury School of Art.

Presented by the Canterbury Society of Arts.

148. MAKING A CHAIN**W. K. SPROTT**

(See No. 144)

Presented by the Canterbury Society of Arts.

149. A COW DRINKING

CUYP

(Dutch School, 1620-1679)

Presented by the Canterbury Society of Arts.

150. LANDSCAPE

VAN GOYEN

(Dutch School, 1596-1656)

Presented by the Canterbury Society of Arts.

151. SCENE IN A TAVERN

JAN STEEN

(Dutch School)

Presented by the Canterbury Society of Arts.

152. SHADES OF EVENING

JOHN GIBB

Presented by the Canterbury Society of Arts.

153. BACCHUS AND ARIADNE

JACOPO AMICONI

Presented by the Canterbury Society of Arts.

154. STORMING THE MARTINIÈRE, LUCKNOW

E. F. TEMPLE

Presented by the Canterbury Society of Arts.

155. THE SHANNON AND THE CHESAPEAKE**J. W. CARMICHAEL**

Presented by the Canterbury Society of Arts.

156. BOTTLE LAKE**JOHN GIBB**

Presented by the Canterbury Society of Arts.

157. AN AUDIENCE**CHARLES CATTERMOLÉ, R.I.**

Presented by S. Hurst Seager, Esq.

158. SELF PORTRAIT**SAMUEL BUTLER**

Samuel Butler, author of "Erewhon," was also a painter in oils, and exhibited at the Royal Academy.

Presented by Canterbury College.

159. THE TROUBADOUR**CHARLES CATTERMOLÉ, R.I.**

Presented by S. Hurst Seager, Esq.

160. NEAR BURNHAM BEECHES**O. RICKATSON**

Presented by the Canterbury Society of Arts.

INDEX OF EXHIBITORS

(The figures indicate the number of exhibit)

Allen, R. W.....	97	Hartwell, C. L.....	1
Allingham, H.....	113	Haszard, R.....	147
Amiconi, J.....	153	Hayes, C.....	121
		Hayward, A.....	68
Balfour, J. L.....	131	Henry, G.....	19
Ballantyne, K. M.....	127	Heysen, Hans.....	49
Baxter, A. E.....	107	Hodgkins, W. M.....	93
Bayes, Gilbert.....	102	Horridge, H.....	145
Bell, R. Anning.....	38	Houston, G.....	10, 55
Birch, S. J. Lamorna.....	130	Hughes, Eleanor.....	126
Boudin, Eugene J.....	51	Hunter, Colin.....	42
Bower, O. Spencer.....	124		
Bowring, W. A.....	83	Jourdan, A.....	141
Brangwyn, F.....	58	Joy, G. W.....	17
Breakspere, W. A.....	35		
Brown, Arnesby.....	12	Kelly, Cecil.....	18, 20
Browne, Henriette.....	65	Kelly, Elizabeth.....	13
Bundy, E.....	108	Kemp-Welch, L.....	4, 21
Butler, Grace.....	81	Kidson, C.....	2
Butler, Samuel.....	158	King, Yeend.....	44
		Knowles, G. Sheridan.....	74
Cane, T.....	52		
Carey, Ida.....	25	La Thangue, H.....	22
Carmichael, J. W.....	155	Law, David.....	119
Cattermole, Charles.....	157, 159	Leighton, Lord.....	80
Chapman, W. E.....	90, 136	Leslie, G. D.....	30
Cook, James.....	114, 116	Lindsay, Norman.....	125
Cooper, T. S.....	34	Lucas, Mrs. Seymour.....	78
Cuyp.....	149	Lund, Niels M.....	26, 139
Downie, P.....	60	Merton, Owen.....	50, 115
Drury, A.....	3	Meserby, G.....	40
Durden, J.....	86	Moore, Henry.....	36
		Murray, Sir David.....	85
Eastlake, C. H.....	31, 46, 132		
Eliott, G. H.....	117	Nairn, J. M.....	45, 88
		Nicoll, A.....	6, 9, 103
Fromuth, C.....	89	Nightingale, L. C.....	66
		Normand, Mrs.....	129
Gibb, J.....	152, 156		
Gibb, W. Menzies.....	32, 67, 69, 137	O'Keeffe, A. H.....	142
Goldie, C. F.....	48, 91, 140	Olsson, Julius.....	71
Gotch, T. C.....	138		
Gouldsmith, E.....	73, 143	Padday, C. M.....	28
Gully, J.....	112	Priestman, B.....	23
		Procter, R.....	16, 56, 92
Hale, W. M.....	104	Prudilla, F.....	61
Hammond, G. D.....	37		
Hankey, W. Lee.....	33	Rae, Henrietta.....	129
Hare, St. G.....	84	Richardson, H. Linley.....	76
		Richmond, D. K.....	96
		Richmond, J. C.....	118
		Rickatson, O.....	160
		Roe, F.....	79

Savage, Cedric.....	82	Van der Velden P.....	54, 57, 62, 63
Scott, J. F.....	64	Van Goyen	150
Sherwood, Maud.....	100	Wallwork, Elizabeth.....	43, 134
Simpson, Charles.....	59, 133	Wallwork, Richard	5, 24, 95
Smith, Hely.....	29	Walker, W. Eyre.....	101
Solomon, S. J.....	11	Walsh, A. W.....	47, 105, 111
Speed, Harold.....	110	Wardle, A.....	72
Sprott, W. K.....	144, 148	Waterlow, Sir E. A.	120
Steen, Jan.....	151	Waymouth, E.....	123
Stoddart, M. O.....	98, 109	Webber, G. K.....	75
Stokes, Adrian.....	7	Webster, W.....	27
		Weeks, J.	146
Temple, E. F.....	154	Welch, N.	8, 77
Thompson, Sydney L.....	14, 87, 128	Williams, Terrick.....	15, 41
Tripe, M. E. R.....	70	Wimperis, J.....	122
		Worsley, C. N.....	53, 94, 135
		Wyllie, W. L.....	39