

Z 7-1  
C 5

CITY OF  
CHRISTCHURCH  
NEW ZEALAND.



1906- 7



CHRISTCHURCH CITY COUNCIL  
CANTERBURY PUBLIC LIBRARY

New Zealand Collection

993.171 CH2

336145

11 October 1972

Printed by H.G. Ell

**Research Room**

CALENDAR—May 1st, 1906, to April 30th, 1907.

1906.

MAY		JUNE		JULY		AUGUST		SEPTEMBER		OCTOBER	
S	613,20,27	S	3101,17,24	S	1815,22,29	S	512,19,26	S	2910,23,30	S	714,21,28
M	714,21,28	M	411,18,25	M	2910,23,30	M	613,20,27	M	3101,17,24	M	1815,22,29
W	1815,22,29	W	512,19,26	W	3101,17,24,31	W	714,21,28	W	411,18,25	W	2910,23,30
Th	2910,23,30	Th	613,20,27	Th	411,18,25	Th	1815,22,29	Th	512,19,26	Th	3101,17,24,31
F	3101,17,24,31	F	714,21,28	F	512,19,26	F	2910,23,30	F	613,20,27	F	411,18,25
S	411,18,25	S	1815,22,29	S	613,20,27	S	3101,17,24,31	S	714,21,28	S	512,19,26
S	512,19,26	S	2910,23,30	S	714,21,28	S	411,18,25	S	1815,22,29	S	613,20,27

NOVEMBER		DECEMBER		JANUARY		FEBRUARY		MARCH		APRIL	
S	411,18,25	S	2910,23,30	S	613,20,27	S	3101,17,24	S	3101,17,24,31	S	714,21,28
M	512,19,26	M	3101,17,24,31	M	714,21,28	M	411,18,25	M	3101,17,24,31	M	1815,22,29
W	613,20,27	W	411,18,25	W	2910,23,30	W	512,19,26	W	411,18,25	W	2910,23,30
Th	714,21,28	Th	512,19,26	Th	3101,17,24,31	Th	613,20,27	Th	613,20,27	Th	3101,17,24
F	1815,22,29	F	613,20,27	F	411,18,25	F	714,21,28	F	714,21,28	F	411,18,25
S	2910,23,30	S	714,21,28	S	411,18,25	S	1815,22,29	S	1815,22,29	S	512,19,26
S	3101,17,24	S	1815,22,29	S	512,19,26	S	2910,23,30	S	2910,23,30	S	613,20,27

1906.

1907.

CANTERBURY PUBLIC LIBRARY

CITY

OF

CHRISTCHURCH

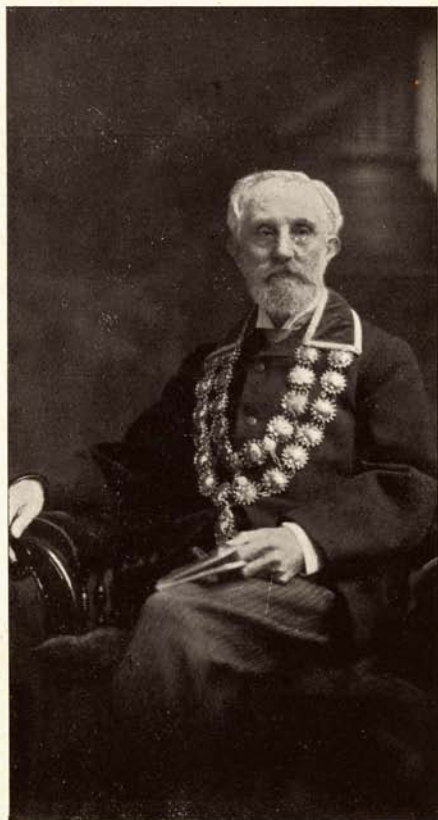
NEW ZEALAND.



1906-7.

CHRISTCHURCH, N.Z.

Christchurch Press Company Limited Printers.



HIS WORSHIP THE MAYOR,  
THE HON. SIR JOHN HALL, K.C.M.G.

Z 7.1  
C 5  
NOV 20 1916  
1229

# Christchurch City Council

NEW ZEALAND,  
— 1906. —

**MAYOR :**

THE HON. SIR JOHN HALL, K.C.M.G.

**COUNCILLORS :**

**Central Ward—**

W. H. Cooper, T. Gapes, S. Hurst-Seager, H. H.  
Loughnan, J. Orchard, G. Payling.

**Linwood Ward—**

T. N. Horsley, H. J. Otley.

**St. Albans Ward—**

G. B. Chick, W. J. Neate.

**Sydenham Ward—**

C. Allison, J. Hadfield, B. P. Manhire, G. W. J. Parsons.

The Council meets every alternate Monday, at 7.30 p.m.

**OFFICERS :**

**Town Clerk and City Treasurer :**

H. R. Smith.

**City Surveyor :**

A. Dudley Dobson, C.E.

**Chief Clerk—**J. S. Neville.

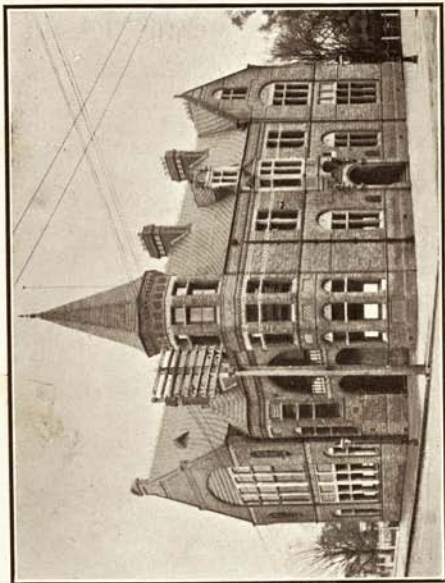
**Accountant—**J. Anderson.

**Collector—**W. Smith.

**Chief Inspector—**C. B. Massey.

**Assistant Inspectors—**B. Throp, A. Batten, L. Hardie, J. P.  
Young.

**Electrical Engineer—**



CITY COUNCIL CHAMBERS.

# CANTERBURY PUBLIC LIBRARY

OFFICERS—Continued.

**Abattoir Manager**—H. S. S. Kyle, G.M.C.V.S.

**Chief Officer of Fire Brigade and Fire Inspector**—E. Smith.

**Draughtsman**—C. Dawe.

**Shorthand Clerk and Typiste**—F. Hadfield.

**Junior Clerks**—L. Atkinson, L. Keig.

**Cadet**—G. L. Cole.

**Messenger**—V. Esselborn.

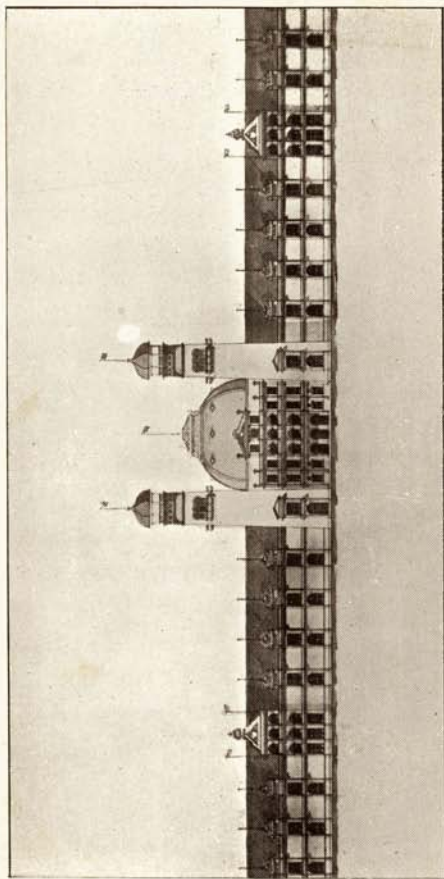
**Inspector of Buildings**—A. Batten.

**Foremen of Works :**

Central Ward	..	..	..	J. C. Cameron
Linwood ..	..	..	..	H. Fabling
St. Albans ..	..	..	..	G. G. Davidson
Sydenham ..	..	..	..	H. Simpson

**CITY MEMBERS OF HOUSE OF REPRESENTATIVES.**

C. M. GRAY, Esq.	..	..	Christchurch North
T. H. DAVEY, Esq.	..	..	.. East
H. G. ELL, Esq.	..	..	.. South
W. W. TANNER, Esq.	..	..	Avon (including Linwood Ward)



MAIN ENTRANCE N.Z. INTERNATIONAL EXHIBITION.

### PAST CHAIRMEN.

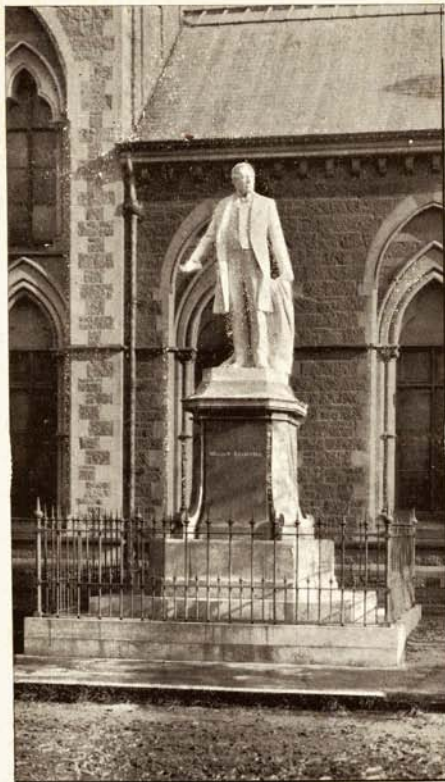
1862-3 ..	..	..	JOHN HALL
1863-4 ..	..	..	JOHN OLLIVIER
1865 ..	..	..	ISAAC LUCK
1866 ..	..	..	E. B. BISHOP
1867 ..	..	..	W. WILSON

### PAST MAYORS.

1868 ..	..	..	W. WILSON
1869 ..	..	..	J. ANDERSON
1870 ..	..	..	A. DUNCAN
1871 ..	..	..	J. P. JAMESON
1872 ..	..	..	H. SAWTELL
1873 ..	..	..	E. B. BISHOP
1874 ..	..	..	M. B. HART
1875-76 ..	..	..	F. HOBBS
1877 ..	..	..	J. GAPES
1878 ..	..	..	H. THOMSON
1879-1880 ..	..	..	C. T. ICK
1881 ..	..	..	J. GAPES
1882-3 ..	..	..	J. G. RUDDENKLAU
1884-5 ..	..	..	C. P. HULBERT
1886-7 ..	..	..	A. AYERS
1888-9 ..	..	..	C. LOUISSON
1890 ..	..	..	S. MANNING
1891 ..	..	..	C. M. GRAY
1892 ..	..	..	W. PRUDHOE
1893 ..	..	..	EDEN GEORGE
1894 ..	..	..	T. GAPES
1895 ..	..	..	W. H. COOPER
1896 ..	..	..	H. J. BESWICK
1897 ..	..	..	W. H. COOPER
1898-9 ..	..	..	C. LOUISSON
1900 ..	..	..	W. REECE
1901 ..	..	..	A. E. G. RHODES
1902 ..	..	..	H. F. WIGRAM

### GREATER CHRISTCHURCH CONSTITUTED, 1903.

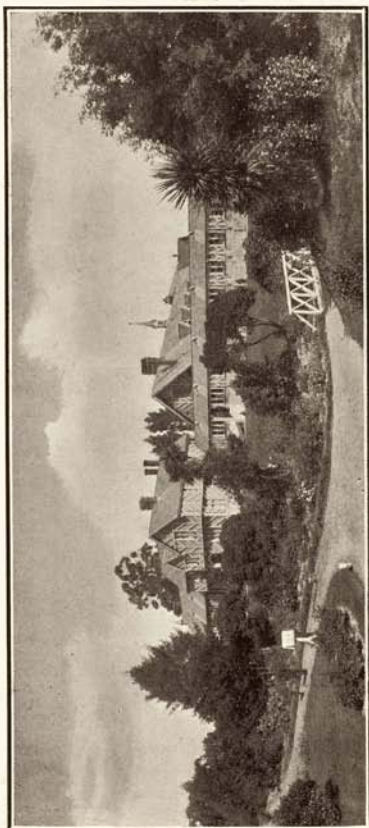
1903 ..	..	..	H. F. WIGRAM
1904-5 ..	..	..	C. M. GRAY



THE ROILESTON STATUE.

## COMMITTEES.

- Abattoir**—His Worship the Mayor, Councillors Cooper (Chairman), Payling, Allison and Chick.
- By-Laws**—His Worship the Mayor, Councillors Loughnan (Chairman), Otley, Parsons, Hurst-Seager and Orchard.
- Finance and Departmental**—His Worship the Mayor, Councillors Hadfield (Chairman), Neate, Otley, Payling and Orchard.
- Fire Brigade**—His Worship the Mayor, Councillors Neate (Chairman), Parsons, Gapes and Horsley.
- Reserves and Cemeteries**—His Worship the Mayor, Councillors Payling (Chairman), Manhire, Parsons, Chick and Hurst-Seager.
- Sanitary**—His Worship the Mayor, Councillors Gapes (Chairman), Allison, Cooper and Horsley.
- Sydenham Water Supply**—His Worship the Mayor, Councillors Hadfield (Chairman), Allison, Manhire and Parsons.
- Works and Lighting**—His Worship the Mayor, Councillors Otley (Chairman), Cooper, Loughnan, Hadfield, Manhire and Chick.



THE HOSPITAL.

## CITY COUNCIL REPRESENTATIVES.

---

### CHARITABLE AID BOARD :

Councillors Cooper and Chick, Mrs. Black and Mrs. Wells.

---

### HOSPITAL BOARD :

Councillors Payling, Gapes, Hadfield and Allison.

---

### CHRISTCHURCH DOMAINS BOARD :

His Worship the Mayor, Councillors Cooper and Manhire,  
Mr. H. J. Beswick.

---

### SAMARITAN HOME TRUSTEE :

Mr. H. B. Sorensen.

---

### CASHMERE HILLS DOMAIN BOARD :

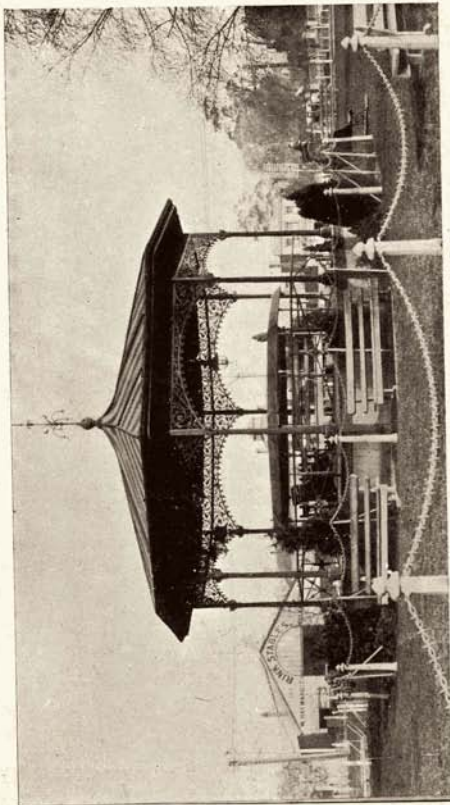
His Worship the Mayor and Mr. C. D. Morris.

---

### THE MUNICIPAL ASSOCIATION OF NEW ZEALAND :

Councillors Loughnan and Hadfield, and the Town Clerk.





BAND ROTUNDA—VICTORIA SQUARE.

## CHRISTCHURCH FIRE BRIGADE

ESTABLISHED 1860.

### STAFF :

- Chief Officer—E. Smith.  
 3 Engineers—A. Stewart, A. C. Shore and D. G. Maindonald  
 3 Assistant Engineers  
 6 Foremen  
 32 Firemen  
 4 Caretakers  
 6 Horse Drivers  
 6 Relief Drivers

### STATIONS :

- 2 in Central Ward—Chester and Lichfield Streets  
 1 in Sydenham Ward  
 1 in St. Albans Ward

### PLANT :

- 3 Steam Fire Engines—one 450 gallons, one 300 gallons,  
 and one 260 gallons per minute.  
 3 Chemical Engines—two double cylinder, one single  
 cylinder.  
 1 Manual Engine  
 2 Fire Escapes—one 65 feet, one 40 feet  
 100 Feet of Ladders  
 9,000 Feet of Hose

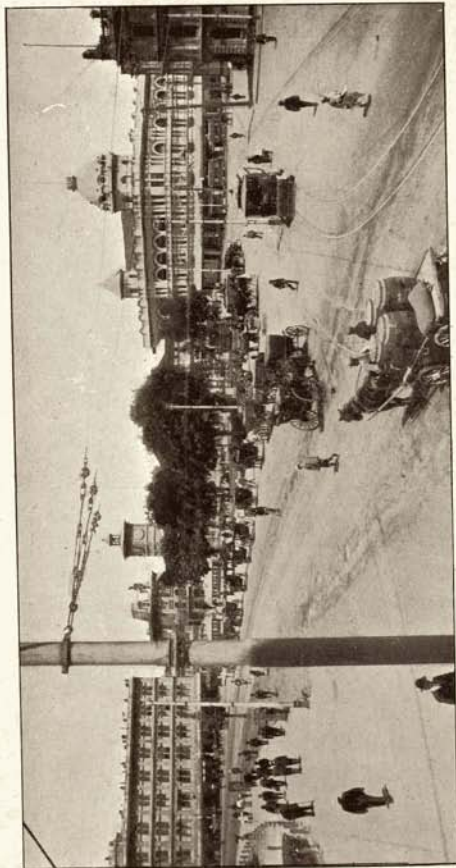
### ALARMS :

- 4 Large Bells in Towers  
 27 Alarm Boxes

### WATER SUPPLY :

Open Tanks, Underground Tanks, Wells and River.  
 The Sydenham Ward is served by a High Pressure Supply.

The City has the use of the Railway large Steam Fire  
 Engine, 1,350 gallons per minute.



VIEW OF CATHEDRAL SQUARE.

## ABATTOIRS,

SITUATED AT  
SOCKBURN.

Area—54a. 2r. 13p. Cost—£20,000.

Inspector and Manager :  
H. S. S. Kyle, G.M.C.V.S.

---

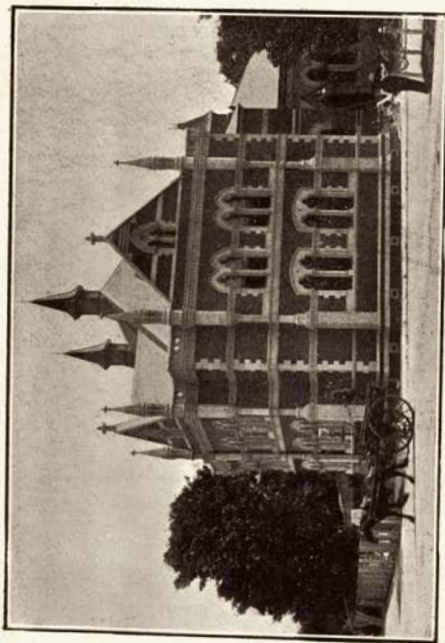
## CITY SINKING FUND COM- MISSIONERS:

Messrs. H. J. Beswick, W. H. Hargreaves, T. N. Horsley,  
J. R. Brunt, A. Marshall.

---

## CITY SOLICITOR:

J. Bickerton Fisher.



THE PUBLIC LIBRARY AND READING ROOMS.

## STATUTORY MEETINGS, ANNUAL ELECTIONS, &c.

### May.

Installation of Mayor, first Wednesday.

### November.

Annual Election of Representatives on Hospital and Charitable Aid Boards, fourth Wednesday.

### December.

Date of Conference under " The Shops and Offices Act " to be fixed, first Council Meeting.

### January.

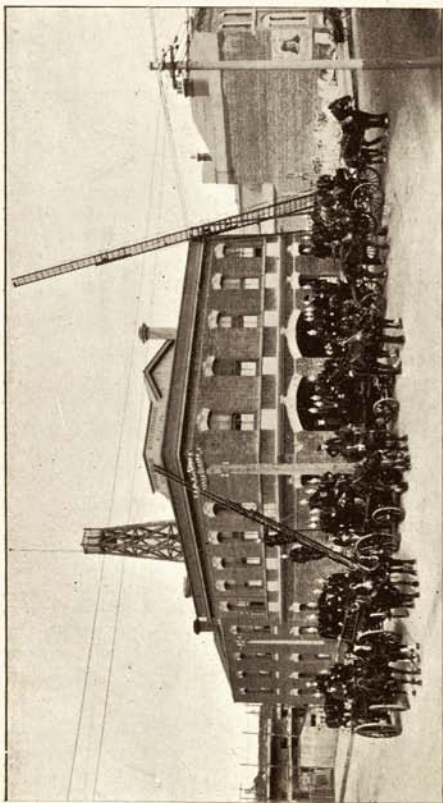
Conference of Delegates to be held, to determine the day on which the weekly half-holiday shall be observed.

### March.

District Electors' List prepared, 5th.  
Objections received to, 17th.  
District Electors' List signed, 4th Wednesday.  
Annual Balance, 31st.

### April.

District Electors' List comes into force on 1st.  
Annual Election of Mayor, last Wednesday.  
Biennial Election of Councillors, last Wednesday.



FIRE BRIGADE STATION, LICHFIELD STREET.

## MUNICIPAL RESERVES.

### WITHIN THE CITY.

	A.	R.	P.
Cranmer Square .. .. .	4	1	24
Latimer Square .. .. .	4	1	24
Library, Waltham Road .. .. .	0	0	36
Poulson Street, Endowment .. .. .	1	1	11
Recreation Reserve, Jerrold Street .. .. .	5	0	0
River Banks Reserves .. .. .	10	3	9
Victoria Square .. .. .	3	3	21

### OUTSIDE THE CITY.

Bottle Lake, Sanitary .. .. .	818	1	13
Bromley, Municipal purposes .. .. .	30	0	0
Bromley, Slaughterhouse .. .. .	6	0	0
Bromley, Smallpox Hospital .. .. .	22	0	0
Cairnbrae, Endowment .. .. .	449	0	0
Cairnbrae, .. .. .	398	2	34
Chaney's, Sewage, &c. .. .. .	936	1	32
Chaney's, .. .. .	160	0	0
Chaney's, .. .. .	40	0	0
Christchurch Cemetery .. .. .	25	3	7
Geraldine, Endowment .. .. .	2,000	0	0
Lyndhurst, .. .. .	345	0	0
New Brighton, planting .. .. .	516	0	21
Rakaia, shingle .. .. .	100	2	20
Shirley, Municipal purposes .. .. .	30	0	0

## FREEHOLD LAND.

	A.	R.	F.
Central Yard, Armagh, Manchester and Gloucester Streets .. ..	2	0	36
Fire Brigade Station, Lichfield Street .. ..	0	0	36½
Stone Yard, South Belt .. ..	1	0	1
Abattoirs, Sockburn .. ..	54	2	13
Yard and Offices, Worcester Street, Linwood .. ..	0	0	37
Stone Yard, Ferry Road, Linwood .. ..	0	1	22
Yard and Fire Brigade Station, Papanui Road, St. Albans .. ..	0	2	32½
Gravel Pit, Strowan, St. Albans .. ..	1	1	0
Cemetery, Milton Street, Spreydon .. ..	17	1	2
Section, Elgin Street, Sydenham .. ..	0	1	0
Yard, Colombo Street, Sydenham .. ..	0	0	10
Baths, Waverley Street, Sydenham .. ..	0	0	16
Fire Brigade Station and Offices, Colombo Street, Sydenham .. ..	4	2	8
Stone Yard, Huxley Street, Sydenham .. ..	1	1	0
Queen Street, Sydenham .. ..	0	0	16

## PUBLIC PARKS.

Linwood Park .. ..	21	0	0
St. Albans Park .. ..	15	1	37
Sydenham Park .. ..	14	0	1
Hagley Park and Botanical Gardens .. ..	495	0	0

## CITY RATES.

### RATEABLE VALUE.

Capital: £7,456,691. Unimproved, £3,095,062.

### CENTRAL WARD.

General, 2½d. in the £ on Unimproved Value.  
 Hospital and Charitable Institutions and Charitable Aid, 2d. in the £ on Capital Value.  
 Special (within original boundaries only), 1½d. in the £ on Unimproved Value.  
 Special (within original boundaries only), ½d. in the £ on Unimproved Value.  
 Special, ½d. in the £ on Unimproved Value.  
 Special (that portion formerly known as Richmond), 1½d. in the £ on Unimproved Value,  
 Uniform Annual Fee, 20s. per Closet Pan.

In addition to the above, the Christchurch Drainage Board levies a General Rate of ¼d. in the £ in the Sewage area, ½d. in the £ in the Rural area, and a Special Rate of ½d. in the £ (within original boundaries only); and the South Waimakariri River Board a General Rate of ½d. in the £, Class 1, and ¾d. in the £, Class 2. The whole are on the Capital Value.

### LINWOOD WARD.

General, 2½d. in the £ on Unimproved Value.  
 Hospital and Charitable Institutions and Charitable Aid, 2d. in the £ on Capital Value.  
 Special, 1½d. in the £ on Unimproved Value.  
 Special, 1½d. in the £ on Unimproved Value.  
 Uniform Annual Fee, 9s. 2d. per Closet Pan.

In addition to the above the Christchurch Drainage Board levies a General Rate of ¼d. in the £ in the Sewage area, and ½d. in the £ in the Rural area; the South Waimakariri River Board a General Rate of ½d. in the £. The whole are on the Capital Value.



JUBILEE CLOCK TOWER.

## CITY RATES.

### ST. ALBANS WARD.

General,  $2\frac{2}{3}\frac{2}{3}$ d. in the £ on Unimproved Value.  
Hospital and Charitable Institutions and Charitable Aid,  
 $\frac{2}{3}$ d. in the £ on the Capital Value.  
Special (special district),  $\frac{2}{3}$ d. in the £ on Unimproved Value.  
Special (special district),  $1\frac{1}{2}$ d. in the £ on Unimproved Value.  
Uniform Annual Fee, 8s. 7d. per Closet Pan.

In addition to the above, the Christchurch Drainage Board levies a General Rate of  $\frac{1}{4}$ d. in the £ in the Sewage area, and  $\frac{1}{4}$ d. in the £ in the Rural area; the South Waimakariri River Board a General Rate of  $\frac{1}{8}$ d. in the £, Class 1, and  $\frac{3}{8}$ d. in the £, Class 2. The whole are on the Capital Value.

### SYDENHAM WARD.

General,  $2\frac{2}{3}\frac{1}{2}$ d. in the £ on Unimproved Value.  
Hospital and Charitable Institutions and Charitable Aid,  
 $\frac{2}{3}$ d. in the £ on the Capital Value.  
Special,  $1\frac{1}{4}$ d. in the £ on Unimproved Value.  
Uniform Annual Fee, 11s. 10d. per Closet Pan.  
Water Rate, £3 10s. per centum on the Annual Value.

In addition to the above, the Christchurch Drainage Board levies a General Rate of  $\frac{1}{4}$ d. in the £ in the Sewage area, and  $\frac{1}{4}$ d. in the £ in the Rural area; the South Waimakariri River Board a General Rate of  $\frac{3}{8}$ d. in the £. The whole are on the Capital Value.

## LOANS—Central Ward.

AMOUNT AUTHORISED	AMOUNT RAISED	PURPOSE	RATE OF INTEREST	ACCRUED SINKING FUND	DATE OF MATURITY
£ 35,000 25,000 6,000 1,640 35,000	£ 35,000 25,000 6,000 1,640 35,000	Drainage Public Works Municipal Offices Richmond Ward Channelling Central Yard, Bridges and Repay- ment of Overdraft Destructor, Sanitary Works Abattoir Electrical Plant	6 per cent. 5 " " 4 " " 4 " " 4 " "	£ 26,779 4 2 6,049 3 9 Nil 128 7 2 Nil Nil* Nil Nil	1922—1924 1935 1906 1928 1930 1930 1935—6 1925
18,500 20,273 11,450	18,500 20,273 11,450		4 " " 4 " "	Nil Nil Nil	1930 1935—6 1925
132,863	132,863		4½	32,056 15 1	

## LOANS.

AMOUNT AUTHORISED	AMOUNT RAISED	PURPOSE	RATE OF INTEREST	ACCRUED SINKING FUND	DATE OF MATURITY
£ 275 1,200 11,182	£ 275 1,200 10,500	<b>LINWOOD WARD</b> Constructing Brick Sewer Purchase of Recreation Ground Public Works	5 per cent. 4½ " "	£ 64 1 3 271 6 0 489 19 2	1919 1920 1920
12,657	11,075			760 10 2	
3,000 23,000	3,000 22,550	<b>ST. ALBANS WARD</b> Channelling Channelling and Kerbing	4 per cent. " "	Nil Nil	1923 1918
26,000	25,550				
25,000 15,000 10,000	25,000 15,000 10,000	<b>SYDENHAM WARD</b> Channelling and Asphalt Waterworks Public Works	5 per cent. 4 " "	2,131 18 10 Nil Nil	1935 1921 1921
50,000	50,000			2,131 18 10	



TRAMWAY CAR SHED.

## CANTERBURY PUBLIC LIBRARY MISCELLANEOUS INFORMATION.

### CEMETERIES.

There are two Public Cemeteries, one situated at Bromley, in the Heathcote Road District, containing 25A. 3R. 7P., and about 2½ miles from Cathedral Square. L. D. Hughes, Sexton; H. Round, Assistant. The other is situated in Milton Street, Spreydon, and contains 17A. 1R. 2P., and is about 3 miles from Cathedral Square. W. H. French, Sexton.

### TRAMWAYS.

The Tramways are under the control of the Christchurch Tramway Board. Chairman, W. Reece, Esq.; Secretary, F. Thompson; Engineer, F. H. Chamberlain.

### GAS.

The City Gasworks are in the hands of a Public Company. Price of Gas, 5s. 3d. per 1,000 feet net.

### DESTRUCTOR.

The City Refuse is destroyed in a Beaman and Dee's Two-unit Destructor.

The Steam produced at the Destructor is used for operating an Electrical Plant, consisting of two generating units of 100 kilowatts each, one of 150 kilowatts, and one of 200 kilowatts.

The Electric Current is sold for lighting and power at the following rates:—

### LIGHTING.

For the first 500 Units, 7d. per Unit.

For each additional Unit over the first 500 and under 1,001, 5d. per Unit.

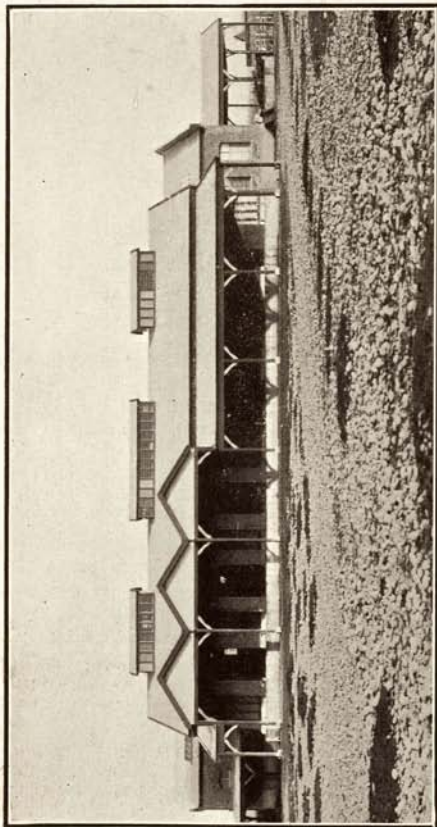
For each additional Unit over the first 1,000, 4½d.

The above rates are subject to a discount of 1d. per Unit on accounts paid on or before the 14th day of the month. Minimum charge, 4 Units.

### POWER AND HEATING.

Three-pence per Unit, subject to a discount of ¾d. per Unit on Accounts paid on or before the 14th day of the month. Minimum charge, 16 Units.





CITY ABATTOIR—SHEEP AND CATTLE SLAUGHTERHOUSE.

**SUBSIDY TO BANDS.**

The Council spends £250 annually in subsidising Five Bands to give Open-Air Concerts in the Rotundas.

—  
**AREA OF CITY**—4,598 Acres.

—  
**POPULATION**—49,920.

—  
**MILES OF STREETS**—124.

## TELEPHONE NUMBERS.

MEMO.

### MAYOR AND COUNCILLORS.

NAME	OFFICE	HOUSE
His Worship the Mayor ..	1306	306
Councillor Chick .. ..	..	1389
.. Cooper .. ..	..	463
.. Gapes .. ..	710	..
.. Horsley .. ..	272	..
.. Hurst-Seager .. ..	456	..
.. Loughnan .. ..	449	706
.. Manhire .. ..	1067	..
.. Neate .. ..	450	1506
.. Otley .. ..	189	578
.. Parsons .. ..	1203	1206
.. Payling .. ..	321	453

### PRINCIPAL OFFICERS.

#### OFFICE, YARD, &c.

	OFFICE	HOUSE
Town Clerk .. ..	807	867
City Surveyor .. ..	1306	1370
City Solicitor .. ..	163	..
Electrical Engineer .. ..	1304	..
Council Chambers .. ..	807	..
.. Yard .. ..	1304	..
Abattoir .. ..	1262	..



