



CITY OF
CHRISTCHURCH

NEW ZEALAND.

1907 - 8

CALENDAR—May 1st, 1907, to April 30th, 1908.

1907.

MAY	JUNE	JULY	AUGUST	SEPTEMBER	OCTOBER
S .. 5121926	S .. 219162830	S .. 71142128	S .. 4111825	S 1 8152229	S .. 6182027
M .. 6182027	M .. 3101724	M 1 8152229	M T T 5121926	M 2 9162330	M .. 7142128
T .. 7142128	T .. 4111825	T 2 9162330	T .. 6192027	T 3101724	T 1 8152229
W 1 8152229	W .. 5121926	W 3101724	W T T 7142128	W 4111825	W 2 9162330
T 2 9162330	T .. 6182027	T 4111825	T .. 1 8152229	T 5121926	T 3101724
F 3101724	F .. 7142128	F 5121926	F T F 1 8152229	F 6182027	F 4111825
S 4111825	S 1 8152229	S 6182027	S .. 3101724	S 7142128	S 5121926

1907.

1908

NOVEMBER	DECEMBER	JANUARY	FEBRUARY	MARCH	APRIL
S 3101724	S 1 8152229	S .. 5121926	S .. 2191628	S 1 8152229	S .. 5121926
M .. 4111825	M 2 9162330	M .. 6182027	M T T 3101724	M 2 9162330	M .. 6182027
T .. 5121926	T 3101724	T .. 7142128	T .. 4111825	T 3101724	T .. 7142128
W .. 6182027	W 4111825	W 1 8152229	W T T 5121926	W 4111825	W 1 8152229
T .. 7142128	T 5121926	T 2 9162330	T .. 6182027	T 5121926	T 2 9162330
F 1 8152229	F 6182027	F 3101724	F T F 7142128	F 6182027	F 3101724
S 2 9162330	S 7142128	S 4111825	S 1 8152229	S 7142128	S 4111825

CANTERBURY PUBLIC LIBRARY

CITY

OF

CHRISTCHURCH

NEW ZEALAND.



1907-8.

CHRISTCHURCH, N.Z.

HORACE J. WEEKS LIMITED, PRINTERS.



HIS WORSHIP THE MAYOR,
GEORGE PAYLING, Esq.

Z 7.1
C 6
NOV 20 1916
1230

Christchurch City Council

NEW ZEALAND,
—1907.—

MAYOR:
GEORGE PAYLING, Esq.

COUNCILLORS:

Central Ward—

W. H. Cooper, T. Gapes, J. D. Hall, H. H. Loughman,
C. D. Morris, H. B. Sorensen

Linwood Ward—

T. N. Horsley, H. J. Otley

St. Albans Ward—

G. Hyde, A. Williams

Sydenham Ward—

C. Allison, J. Forrester, G. W. J. Parsons, C.
Taylor, J. Hadfield (Resigned)

The Council meets every alternate Monday, at 7.30 p.m.

OFFICERS:

Town Clerk and City Treasurer:

H. R. Smith.

City Surveyor:

A. Dudley Dobson, C.E.

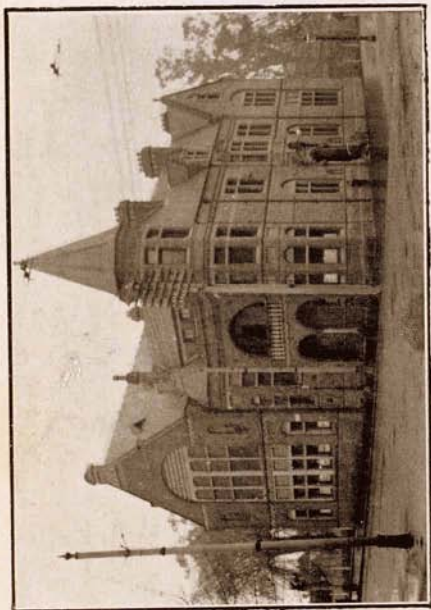
Chief Clerk—J. S. Neville

Accountant—J. Anderson

Collector—W. Smith

Chief Inspector—C. B. Massey

Assistant Inspectors—B. Throp, A. Batten, L. Hardie,
J. P. Young.



CITY COUNCIL CHAMBERS.

OFFICERS—Continued.

Electrical Engineer—J. C. Scott

Abattoir Manager—H. S. S. Kyle, G.M.C.V.S

Draughtsman—C. Dawe

Shorthand Clerk and Typiste—F. Hadfield

Junior Clerks—L. Atkinson, L. Keig

Cadet—G. L. Cole

Messenger—V. Esselborn

Inspector of Buildings—A. Batten

Foremen of Works:

Central Ward	J. C. Cameron
Linwood	H. Fabling
St. Albans	G. G. Davidson
Sydenham	H. Simpson

CITY MEMBERS OF HOUSE OF REPRESENTATIVES.

C. M. GRAY, Esq.	...	Christchurch North
T. H. DAVEY, Esq.	...	East
H. G. ELL, Esq.	...	South
W. W. TANNER, Esq.	...	Avon (including Linwood Ward)



JUBILEE CLOCK TOWER.

PAST CHAIRMEN.

1862-3	JOHN HALL
1863-4	JOHN OLLIVIER
1865	ISAAC LUCK
1866	E. B. BISHOP
1867	W. WILSON

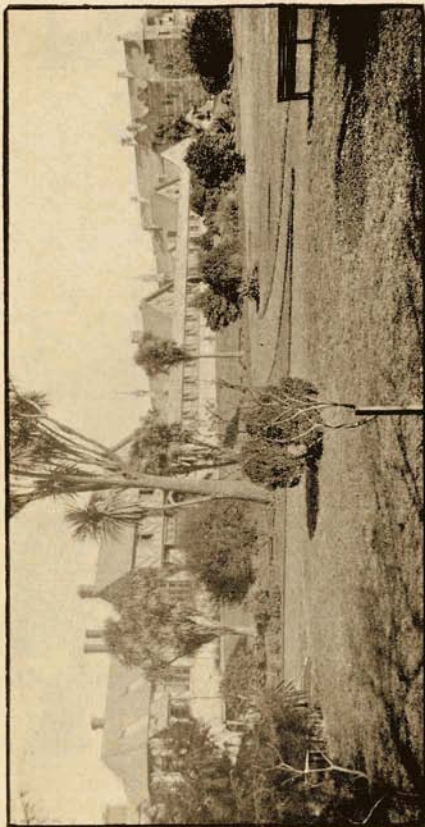
PAST MAYORS.

1868	W. WILSON
1869	J. ANDERSON
1870	A. DUNCAN
1871	J. P. JAMESON
1872	H. SAWTELL
1873	E. B. BISHOP
1874	M. B. HART
1875-6	F. HOBBS
1877	J. GAPES
1878	H. THOMSON
1879-1880	C. T. ICK
1881	J. GAPES
1882-3	J. G. RUDDENKLAU
1884-5	C. P. HULBERT
1886-7	A. AYERS
1888-9	C. LOUISSON
1890	S. MANNING
1891	C. M. GRAY
1892	W. PRUDHOE
1893	EDEN GEORGE
1894	T. GAPES
1895	W. H. COOPER
1896	H. J. BESWICK
1897	W. H. COOPER
1898-9	C. LOUISSON
1900	W. REECE
1901	A. E. G. RHODES
1902	H. F. WIGRAM

GREATER CHRISTCHURCH CONSTITUTED, 1903.

1903	H. F. WIGRAM
1904-5	C. M. GRAY
1906	HON. SIR JOHN HALL

K.C.M.G.



THE HOSPITAL.

COMMITTEES.

Abattoir—His Worship the Mayor, Councillors Cooper (Chairman), Forrester, Gapes, Hyde, Parsons and Taylor

Bands—His Worship the Mayor, Councillors Allison, Cooper, Horsley, and Williams

By-Laws—His Worship the Mayor, Councillors Hall (Chairman), Horsley, Loughnan, Otley and Parsons

Finance and Departmental—His Worship the Mayor, Councillors Forrester (Chairman), Hall, Otley, Sorensen and Williams. Meets on Mondays at 10.15 a.m.

Reserves and Cemeteries—His Worship the Mayor, Councillors Allison (Chairman), Horsley, Morris, Taylor and Williams

Sanitary—His Worship the Mayor, Councillors Sorensen (Chairman), Horsley, Hyde, Otley, and Taylor

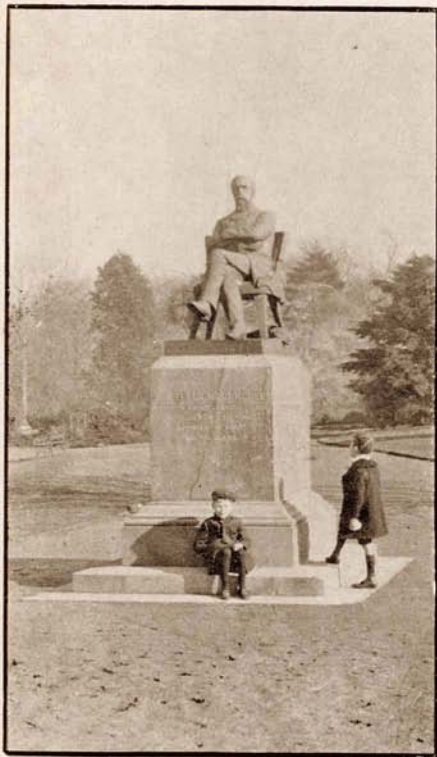
Sydenham Water Supply—His Worship the Mayor, Councillors Allison, Forrester, Parsons and Taylor

Works and Lighting—His Worship the Mayor, Councillors Otley (Chairman), Allison, Cooper, Gapes, Hyde, Morris and Taylor. Meets alternate Thursdays at 7.30 p.m.

Public Baths—His Worship the Mayor, Councillors Forrester, Otley, Parsons, Sorensen, Taylor and Williams

General Water Supply—His Worship the Mayor, Councillors Cooper (Chairman), Forrester, Gapes, Hyde, Morris, Otley and Sorensen

Waimakariri Power Scheme—His Worship the Mayor (Chairman), Councillors Cooper, Hall, Otley, Taylor and Williams



THE MOORHOUSE STATUE AND MAIN
ENTRANCE TO GARDENS.

CITY COUNCIL REPRESENTATIVES.

CHARITABLE AID BOARD :
Councillor Parsons and Mr. Manhire

HOSPITAL BOARD :
His Worship the Mayor
Councillors Gapes, Allison and Morris

CHRISTCHURCH DOMAINS BOARD :
His Worship the Mayor, Councillor Cooper,
Messrs. H. J. Beswick and B. P. Manhire

SAMARITAN HOME TRUSTEE :
Councillor Sorensen

**THE MUNICIPAL ASSOCIATION OF
NEW ZEALAND :**
Councillors Loughnan and _____, and the Town Clerk

TECHNICAL ASSOCIATED CLASSES :
Councillors Allison, Cooper, Gapes and Parsons,
Messrs. G. B. Chick and B. P. Manhire

CHRISTCHURCH FIRE BOARD :
Councillors Allison, Hall and Sorensen

CASHMERE HILLS DOMAIN BOARD :
His Worship the Mayor and Councillor Morris



SYDENHAM WATER TOWER.

CHRISTCHURCH FIRE BOARD.

H. R. Rusbridge	Representing the Government
C. Allison	} Representing the Christchurch City Council
J. D. Hall (Chairman)	
H. B. Sorensen	
C. J. Cooper	} Representing the Insurance Companies
J. F. W. Grierson	
W. D. Meares	

STAFF :

Chief Officer—E. Smith
 Secretary—E. J. Righton
 3 Engineers—A. Stewart, A. L. Davis, D. G. Maindonald
 3 Assistant Engineers
 6 Foremen
 32 Firemen
 4 Caretakers
 6 Horse Drivers
 6 Relief Drivers

STATIONS :

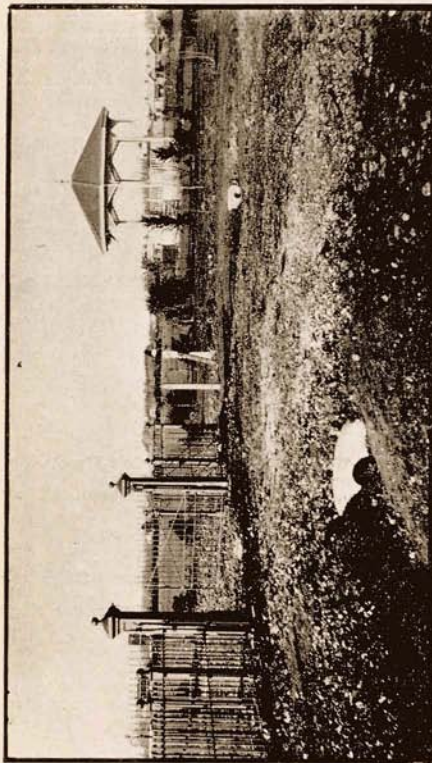
2 in Central Ward—Chester and Lichfield Streets
 1 in Sydenham Ward
 1 in St. Albans Ward

PLANT :

3 Steam Fire Engines—one 450 gallons, one 300 gallons,
 and one 260 gallons per minute
 3 Chemical Engines—two double cylinder, one single
 cylinder
 1 Manual Engine
 2 Fire Escapes—one 65 feet, one 40 feet
 100 Feet of Ladders
 9,000 Feet of Hose

ALARMS :

4 Large Bells in Towers
 27 Alarm Boxes



ST. ALBANS PARK AND ROTUNDA.

CHRISTCHURCH FIRE BOARD—Contd.

WATER SUPPLY :

Open Tanks, Underground Tanks, Wells and River
The Sydenham Ward is served by a High Pressure Supply
Loans have been authorised for the establishment of a
High Pressure Water Supply in each of the other
Wards

The City has the use of the Railway large Steam Fire
Engine, 1,350 gallons per minute

ABATTOIRS,

SITUATED AT

SOCKBURN.

Area—54a. 2r. 13p. Cost £20,000

Inspector and Manager :

H. S. S. Kyle, G.M.C.V.S.

CITY SINKING FUND COM- MISSIONERS :

Messrs. H. J. Beswick, W. H. Hargreaves, T. N. Horsley,
J. R. Brunt, A. Marshall

CITY SOLICITOR :

J. Bickerton Fisher

**STATUTORY MEETINGS,
ANNUAL ELECTIONS, &c.**



ANGLICAN CATHEDRAL.

May.

Installation of Mayor, First Wednesday
Biennial Election of Representatives on Fire Board

November.

Annual Election of Representatives on Hospital and
Charitable Aid Boards, fourth Wednesday

December.

Date of Conference under "The Shops and Offices
Act," to be fixed first Council Meeting.

January.

Conference of Delegates to be held, to determine
the day on which the weekly half-holiday shall be
observed.

March.

District Electors' List prepared, 5th
Objections received to, 17th
District Electors' List Signed, 4th Wednesday
Annual Balance, 31st

April.

District Electors' List comes into force on 1st
Annual Election of Mayor, last Wednesday
Biennial Election of Councillors, last Wednesday



ROMAN CATHOLIC CATHEDRAL.



MUNICIPAL RESERVES.

WITHIN THE CITY.

	A.	£.	P.
Cranmer Square	4	1	24
Latimer Square	4	1	24
Library, Waltham Road	0	0	36
Poulson Street, Endowment	1	1	11
Recreation Reserve, Jerrold Street	5	0	0
River Banks Reserves	10	3	9
Victoria Square	3	3	21

OUTSIDE THE CITY.

Bottle Lake, Sanitary	818	1	13
Bromley, Municipal purposes	30	0	0
Bromley, Slaughterhouse	6	0	0
Bromley, Smallpox Hospital	22	0	0
Cairnbrae, Endowment	449	0	0
Cairnbrae	398	2	34
Chaney's, Sewage, &c.	936	1	32
Chaney's,	160	0	0
Chaney's,	40	0	0
Christchurch Cemetery	25	3	7
Geraldine, Endowment	2,000	0	0
Lyndhurst,	345	0	0
New Brighton, planting	516	0	21
Rakaia, shingle	100	2	20
Shirley, Municipal purposes	30	0	0
Templeton, Abattoir	10	0	0

FREEHOLD LAND.

	A.	R.	P.
Central Yard, Armagh, Manchester and Gloucester Streets	2	0	36
Fire Brigade Station, Lichfield Street ...	0	0	36½
Stone Yard, Moorhouse Avenue	1	0	1
Abattoirs, Sockburn	54	2	13
Yaad and Offices, Worcester Street, Linwood	0	0	37
Stone Yard, Ferry Road, Linwood	0	1	22
Yard and Fire Brigade Station, Papanui Road, St. Albans	0	2	32.6
Gravel Pit, Strowan, St. Albans	3	1	1
Cemetery, Milton Street, Spreydon	17	1	2
Section, Elgin Street, Sydenham	0	1	0
Yard, Colombo Street, Sydenham	0	1	0
Baths, Waverley Street, Sydenham	0	0	16
Fire Brigade Station and Offices, Colombo Street, Sydenham	4	2	8
Stone Yard, Huxley Street, Sydenham	1	1	0
Queen Street, Sydenham	0	0	16

PUBLIC PARKS.

Linwood Park	21	0	0
St. Albans Park	15	1	37
Sydenham Park	14	0	1
Hagley Park and Botanical Gardens	495	0	0

CITY RATES.

RATEABLE VALUE.

Capital : £7,985,059. Unimproved, £8,146,871.

CENTRAL WARD.

General, 39/80d in the £ on Unimproved Value
Hospital and Charitable Institutions and Charitable Aid, 11/128d in the £ on Capital Value
Special (within original boundaries only), 15/64d in the £ on Unimproved Value
Special (within original boundaries only), 5/32d in the £ on Unimproved Value
Special, 17/128d in the £ on Unimproved Value
Special (that portion formerly known as Richmond), 13/32d in the £ on Unimproved Value
Uniform Annual Fee, 22s 8d per Closet Pan

In addition to the above, the Christchurch Drainage Board levies a General Rate of ¼d in the £ in the Sewage area, ½d in the £ in the Rural area, and a Special Rate of 3/32d in the £ (within original boundaries only) ; and the South Waimakariri River Board a General Rate of 1/64d in the £, Class 1, and 1/64d in the £, Class 2. The whole are on the Capital Value

LINWOOD WARD.

General, 31/16d in the £ on Unimproved Value
Hospital and Charitable Institutions and Charitable Aid, 11/128d in the £ on Capital Value
Special, 1/10d in the £ on Unimproved Value
Special, 9/16d in the £ on Unimproved Value
Uniform Annual Fee, 9s 6d per Closet Pan

In addition to the above, the Christchurch Drainage Board levies a General Rate of ¾d in the £ in the Sewage area, and ½d in the £ in the Rural area ; the South Waimakariri River Board a General Rate of 1/64d in the £. The whole are on the Capital Value

CITY RATES.

ST. ALBANS WARD.

General, 3 1/16d in the £ on Unimproved Value
 Hospital and Charitable Institutions and Charitable
 Aid, 1 1/28d in the £ on the Capital Value
 Special (special district), 4 5/64d in the £ on Unimproved
 Value
 Special (special district), 1 1/4d in the £ on Unimproved
 Value
 Uniform Annual Fee, 9s 6d per Closet Pan

In addition to the above, the Christchurch Drainage
 Board levies a General Rate of 3/4d in the £ in the
 Sewage area, and 1/4d in the £ in the Rural area; the
 South Waimakariri River Board a General Rate of 1/64d
 in the £, Class 1, and 1/64d in the £, Class 2. The whole
 are on the Capital Value

SYDENHAM WARD.

General, 3 1/16d in the £ on Unimproved Value
 Hospitable and Charitable Institutions and Charitable
 Aid, 1 1/28d in the £ on the Capital Value
 Special, 39/64d in the £ on Unimproved Value
 Special, 1/4d in the £ on Unimproved Value
 Special, 1 1/4d in the £ on Unimproved Value over that
 portion formerly known as Beckenham
 Uniform Annual Fee, 18s 8d per Closet Pan
 Water Rate, £3 per centum on the Annual Value

In addition to the above, the Christchurch Drainage
 Board levies a General Rate of 3/4d in the £ in the
 Sewage area, and 1/4d in the £ in the Rural Area; the
 South Waimakariri River Board a General Rate of 1/64d
 in the £. The whole are on the Capital Value

PRINCIPAL ITEMS OF RECEIPTS AND EXPENDITURE,

For period ended 31st March, 1907.

RECEIPTS.		EXPENDITURE.	
£	s. d.	£	s. d.
Rates	74989 3 0	Salaries	3596 8 3
Licenses	5928 4 11	Management Expenses	2184 0 6
Rents	1968 5 0	Street Works	31572 11 3
Electric Lighting and Power	8691 3 8	Waterworks	1411 3 11
Abattoir Fees, etc.	2892 8 11	Hospital and Charitable Aid	2772 3 3
		Collection and Disposal of Nightsoil and Household Refuse	9304 6 7
		Fire Prevention	2269 18 4
		Street Lighting	2982 17 3
		Cemeteries, Reserves, Morgue, etc.	2151 14 2
		Abattoirs	3065 18 1
		Interest and Sinking Funds	12929 18 2
		Electric Lighting Works	18456 16 11
		Rates paid over to other Local Bodies	23553 19 1

336146

LOANS.

AMOUNT AUTHORISED	AMOUNT RAISED	PURPOSE	RATE OF INTEREST	ACCRUED SINKING FUND	DATE OF MATURITY
£ 15,000 20,273 5,000	£ 15,000 20,273	WHOLE CITY. Destructor. Abattoir. Public Baths	4 per cent 4 " " 4½ "	£ s. d. Nil Nil Nil	19'0 1985-6 1932
40,273	85,273				
		CENTRAL WARD.			
35,000	35,000	Drainage	6 per cent	28,023 7 5	1922-1926
25,000	25,000	Public Works	5 "	6,890 1 0	1885
6,000	6,000	Municipal Offices	4 "	113 15 0	1916
1,640	1,640	Lichmond Ward Channelling	4 "	149 3 2	1928
35,000	33,000	Central Ward, Bridges and Repayment of Overdraft	4 "	Nil	1930
3,500	3,500	Sanitary Works	4 "	Nil	1930
11,450	11,450	Electrical Plant	4½ "	360 13 6	1925
117,590	117,590			35,037 0 1	

LOANS.

AMOUNT AUTHORISED	AMOUNT RAISED	PURPOSE	RATE OF INTEREST	ACCRUED SINKING FUND	DATE OF MATURITY
£ 275 1,200 11,182	£ 275 1,200 10,510	LINWOOD WARD Constructing Brick Sewer Purchase of Recreation Ground Public Works	5 per cent 4½ " 4½ "	£ s. d. 74 8 4 324 4 11 587 14 8	1919 1920 1920
12,657	11,975			986 7 11	
3,000	3,000	ST. ALBANS WARD			
23,000	22,550	Channelling Channelling and Kerbing	4 per cent 4 "	Nil Nil	1923 1918
26,000	25,550				
		SYDENHAM WARD			
25,000	25,000	Channelling and Asphalt	5 per cent	2,453 18 4	1985
15,000	15,000	Waterworks	4 "	Nil	1931
7,430	7,430	Waterworks	4½ "	Nil	1921
10,000	10,000	Public Works	4 "	Nil	1921
57,430	57,430			2,453 18 4	

MISCELLANEOUS INFORMATION.

CEMETERIES.

There are two Public Cemeteries, one situated at Bromley, in the Heathcote Road District, containing 25A. 3r. 7p., and about 2½ miles from Cathedral Square. L. D. Hughes, Sexton; H. Round, Assistant. The other is situated in Milton Street, Spreydon, and contains 17A. 1r. 2p., and is about 3 miles from Cathedral Square. W. H. French, Sexton.

TRAMWAYS.

The Tramways are under the control of the Christchurch Tramway Board. Chairman, A. W. Beaven, Esq.; Secretary, F. Thompson; Engineer, F. H. Chamberlain.

GAS.

The City Gasworks are in the hands of a Public Company. Price of Gas, 5s. 3d. per 1,000 feet net.

DESTRUCTOR.

The City Refuse is destroyed in a Beaman and Dee's Two-unit Destructor.

The Steam produced at the Destructor is used for operating an Electrical Plant, consisting of two generating units of 100 kilowatts each, one of 150 kilowatts, and one of 200 kilowatts.

The Electric Current is sold for lighting and power at the following rates:—

LIGHTING.

For the first 500 Units, 7d per Unit.

For each additional Unit over the first 500 and under 1,000, 5d per Unit.

For each additional Unit over the first 1,000, 4½d.

The above rates are subject to a discount of 1d per Unit on accounts paid on or before the 14th day of the month. Minimum charge, 4 Units.

Destructor.—Continued.

POWER AND HEATING.

Three-pence per Unit, subject to a discount of ¼d per Unit on Accounts paid on or before the 14th day of the month. Minimum charge, 16 Units.

PUBLIC BATHS.

A Loan of £5,000 has been sanctioned for the establishment of Public Baths, for which a Contract has been let and the work of construction commenced.

The Baths will include a tepid swimming pool 100ft x 36ft, private baths for ladies and men, shower baths, a large number of dressing rooms, caretaker's quarters, &c.

THE WATER SUPPLY.

The water supply is drawn from private artesian wells except in Sydenham Ward, where a high pressure supply has been established derived from a 4in artesian well; a water tower 120 ft in height gives the necessary pressure.

Loans have been authorised to provide high pressure supplies for each of the other Wards.

SUBSIDY TO BANDS.

The Council spends £250 annually in subsidising Five Bands to give Open-Air Concerts in the Rotundas.

AREA OF CITY—4,798 acres.

POPULATION—50,261.

MILES OF STREETS—128½.

CAB FARES

To be charged for any Hackney Carriage plying for Hire.

FARES BY DISTANCE.

	s.	d.
1—From the Railway Station for any distance not exceeding one mile	1	0
For subsequent half mile or less	0	6
2—From any other place within the City:—		
<i>a.</i> To any other place within the same Ward	1	0
<i>b.</i> For any distance not exceeding half a mile outside the boundary of the same Ward an additional fare of ..	0	
<i>c.</i> For every additional half mile or less beyond the first half mile from the boundary of the same Ward an additional fare of	0	6
3—When any passenger shall not be set down in the Ward in which the hiring took place one half of the above fares may be charged as back fare for any distance exceeding one mile from the nearest boundary of the Ward in which the hiring took place.		
4—For a Hackney Carriage hired to take up a passenger at any distance:—		
<i>a.</i> Exceeding twenty chains and not exceeding half a mile from place of hiring in addition to the ordinary fare	0	6
<i>b.</i> Exceeding half a mile from place of hiring for every half mile or part thereof in addition to the ordinary fare	0	6
5—For detention after commencement of the journey, for every completed fifteen minutes	1	0
6—In case of a Hackney Carriage licensed to carry more than two passengers, when the hiring is by distance, one-half extra may be charged in respect of each adult in excess of two carried.		

CANTERBURY PUBLIC LIBRARY

Cab Fares.—Continued.

FARES BY TIME.

	s.	d.
1—Inside the Central Ward:—		
<i>a.</i> For any period not exceeding fifteen minutes	1	6
<i>b.</i> For each subsequent fifteen minutes or any less period beyond any number of periods of fifteen minutes completed	1	0
<i>c.</i> For each hour	4	0
2—Outside the Central Ward, and within ten miles from the principal Post Office in the City:—		
<i>a.</i> For any period not exceeding fifteen minutes	1	6
<i>b.</i> For every subsequent fifteen minutes or part thereof	1	0
<i>c.</i> For every period exceeding 45 minutes and not exceeding one hour	4	6
For every complete hour	4	6
<i>d.</i> When any passenger shall not be set down within the Ward within which the hiring took place, one half of the above fares may be charged as back fare at the rate of six miles an hour for any distance exceeding one mile from the nearest boundary of the Ward in which the hiring took place.		
3. In case of a Hackney Carriage licensed to carry more than two passengers, when the hiring is by time, one-fourth extra may be charged in respect of each adult in excess of two carried.		

GENERAL.

On Sundays, Christmas Day and Good Friday double fares may be charged, whether by time or distance.

Half fares extra shall be chargeable between 9 p.m. and 11 p.m., and double fares between 11 p.m. and 6 a.m.

Cab Fares.—Continued.

For hiring a carriage and not further employing the same s. d.
 1 0

Either one or two adults to be a full fare. Infants in arms shall not be counted as passengers, and children under 12 years of age, other than infants in arms, shall be counted as half fares, and charged accordingly.

N.B.—Luggage not exceeding 56lbs in weight free. For each 28lbs of extra luggage a charge of sixpence may be made.

It shall be at the option of the hirer of any Hackney Carriage, to be declared at the time of hiring whether such hiring is to be by time or distance. If the hirer shall not so declare, it shall be at the option of the driver.



TELEPHONE NUMBERS.

MAYOR AND COUNCILLORS.

NAME	OFFICE	HOUSE
His Worship the Mayor..	321	453
Councillor Allison	2213
.. Cooper	463
.. Forrester ..	1417	..
.. Gapes ..	710	..
.. Hall ..	865	101E
.. Horsley ..	272	..
.. Hyde	1181
.. Loughnan ..	449	706
.. Morris ..	653	1472
.. Otley ..	189	578
.. Parsons ..	1203	1206
.. Sorensen ..	919	1916
.. Taylor ..	1803	..
.. Williams ..	170	..

PRINCIPAL OFFICERS.

OFFICE, YARD, &c.

—	OFFICE	HOUSE
Town Clerk	807	867
City Surveyor	1306	1370
City Solicitor	163	..
Electrical Engineer ..	1304	..
Council Chambers ..	807	..
.. Yard	1304	..
Abattoir	1262	..

