

## Holiday Highlights



**READY STEADY CLICK  
FOR PRESCHOOLERS:**  
South Learning Centre.

**ENROLLING NOW-**  
**4weeks teaching 4yr olds**  
**skills in computer and**  
**digital camera use.**

**Please note**  
**Bookings**

**New New**  
**System**

When a school books one of our services an estimate of costs for this will be sent to the school. This will need to be paid by the end of the term.

## Get *your* class involved in the 2008 Youth Heritage Competition

### 2008 Youth Heritage Competition

The Youth Heritage competition is back again in 2008. Take a look at these young people frolicking in the sand and surf at Sumner Beach. Yes they are wearing their togs or swimming costumes! This year the competition theme is **“Back to the Future”**.



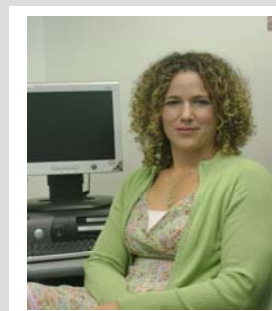
We hope that this will get students looking at what was happening in our city in the years following World War II right up to the present time where we have felt the impact of the World Wide Web. So we challenge you to “take a trip back in time to 1946, then speed ahead to 2008 on a journey to uncover changes in Canterbury fashion, music, entertainment and more...”

For more information visit [www.sl.c.ac.nz/comp\\_details.htm](http://www.sl.c.ac.nz/comp_details.htm).

### Staff news

We sadly farewell Nina as she embarks on her next thrilling adventure. A big thank you for all her innovative and stimulating contributions to the Learning Centres.

A big welcome to Danielle Marston the new full-time Community Learning Specialist. Originally from Canada, Danielle has been teaching in New Zealand since 1997. Danielle is looking forward to using her ICT skills in the development and delivery of learning programmes across the library network and developing her skills by continuing with her Diploma in ICT in Education.



The part time Learning Specialist position has not been filled and will be re advertised at a later date . Are you interested? This position is for 20 hours a week.

The new administrator will start in approximately a month. In the meantime a temp will be working with us.



Check out our website:

<http://learningcentre.christchurch.org.nz>

## Latest News from SLC

### New opportunity!!

Link up with an Australian School via video conferencing to study the NZ book **Whale Rider**  
Contact the Centre if you are interested.

### 2008 Horizons Programmes

Take advantage of these great student centred programmes. Limited places available in

- Film School
- Design School

Be in quickly to secure a place for one of your students.

### Teacher Development

Opportunities (on request) for developing professional skills. Whole syndicate, with or without 2 students.

Specialised Information Literacy linked to Library skills.

Specialised Maori Services linked to PD and class programmes

All \$45 for half a day \$90 a full day for each teacher.

### Matariki, Maori New Year

Pre Matariki lessons at SLC with websites to support this event. Prepare now for this celebration in June.

### Innovation days for teachers and their classes

Eg Claymation

Wochr – link ups with Wolverhampton in the UK

Film School  
Design

Inquiry based full day programmes related to the school needs

Any of the Horizon programmes

### Contact us

For bookings and further information

email:

[ainslee.mcgill@ccc.govt.nz](mailto:ainslee.mcgill@ccc.govt.nz)

phone: 941 5140

## Using the Learning Centres

### Learning Centre

Our aim is

- to develop relevant ICT learning strategies and classroom activities linked to the NZ curriculum
- to support teachers to become: Confident, Connected, Actively involved lifelong learners.

### Bookings

Learning services for 2008 continue for school using a user pays model

- Please phone 941 5140 to arrange bookings for class visits or equipment loan. We recommend booking well in advance, up to two terms ahead.
- Please arrange a planning meeting with Learning Specialist staff at the Learning Centre prior to your class visit.
- Bookings include Horizons, Innovations Days, Teacher Professional learning and class visits.

### General Procedures

- Please access the Learning Centres through the main library entrance doors.
- The class teacher is responsible for the class in the event of an emergency and is required to have a class roll on hand
- Advise Learning Centre staff if any of the students have vision or hearing and/behavioural problems difficulties.

### Consent Forms

- Schools are responsible for ensuring their school internet policy has been outlined to and signed by parents, thereby visits to the Learning Centre will be covered under this Internet policy and a separate consent form will not be required.
- A new Memorandum of Understanding for 2008 will be distributed for Principals to sign. This is an annual procedure.

### Printing Costs at the Learning Centres

In situations where colour printing is required, students are able to print **one copy per student** at no cost. Any colour printing in excess of one copy per student, or surplus pages printed in error, will be charged to the school.

Our colour printing charges for classroom use are: A4 \$1.00 and A3 \$2.00.

## Community Programmes

*Please promote these in your school newsletter*

### Online Selling

@ South Learning Centre

Interested in learning some finer points for successful selling? of goods online. Learn how to resize and place photographs on a trading website.

Upper Riccarton & South LCs:

Tuesday 26 February 7-9pm

**Suitable for adults, \$5 session fee**

### Family Maths Fun

@ South Learning Centre

Learn and use numeracy and patterning strategies to solve problems. Have fun with fractions, and tessellation designs. Based at year4, 5 & 6 levels, each session will cover key mathematical concepts and include take home resources and games.

1<sup>st</sup>, 8<sup>th</sup> and 15 April 6.30-8.30pm

**For families with children 7 years+**

**Children under 14 years must attend with an adult**

**No charge for Family Internet programmes**

**For full programme information visit:**

**<http://learningcentre.christchurch.org.nz>**

**For bookings and enquiries phone: 941 7923**



**Get FIT**  
technologically  
with your family